

F.A.I. RTE.	SECTION	COUNTY	TOTAL SHEETS	SHEET NO.
90/94		COOK	41	1
62995				

STATE OF ILLINOIS
DEPARTMENT OF TRANSPORTATION
DIVISION OF HIGHWAYS

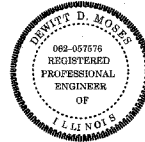
**PLANS FOR PROPOSED
FEDERAL AID HIGHWAY**

F.A.I. ROUTE 90/94 (DAN RYAN EXPRESSWAY)
SECTION (2122-921 PT 1 & 2122-921 PT 2) I-7

SOUTHBOUND KNEE WALLS
(47TH ST TO 43RD ST)

COOK COUNTY
C-91-253-05

DESIGN NUMBER
D-91-417-01



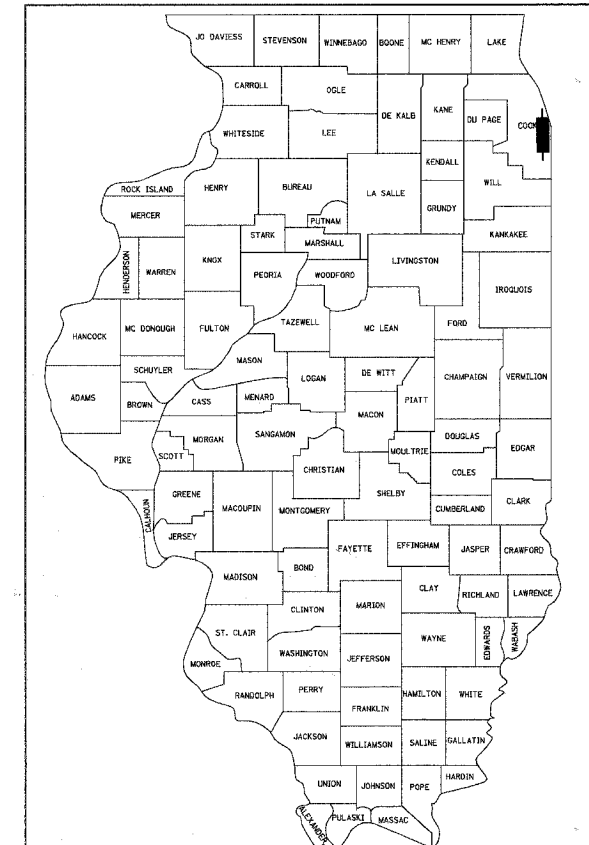
SIGNATURE *D. Morse*
DATE Apr. 25, 2008
EXPIRES Nov. 30, 2009



SIGNATURE *J. Colwell*
DATE Apr. 25, 2008
EXPIRES Nov. 30, 2009



SIGNATURE *B. Umbricht*
DATE APRIL 25, 2008
EXPIRES Nov. 30, 2008



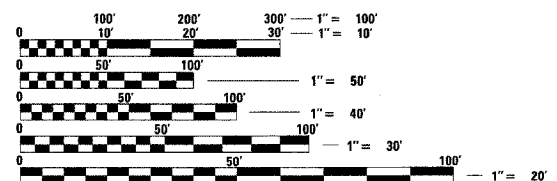
LOCATION OF SECTION INDICATED THIS: - [shaded area]

PROJECT LOCATED IN CITY OF CHICAGO

DESIGN DESIGNATION

WENTWORTH AVE: 8275 (20) URBAN COLLECTOR

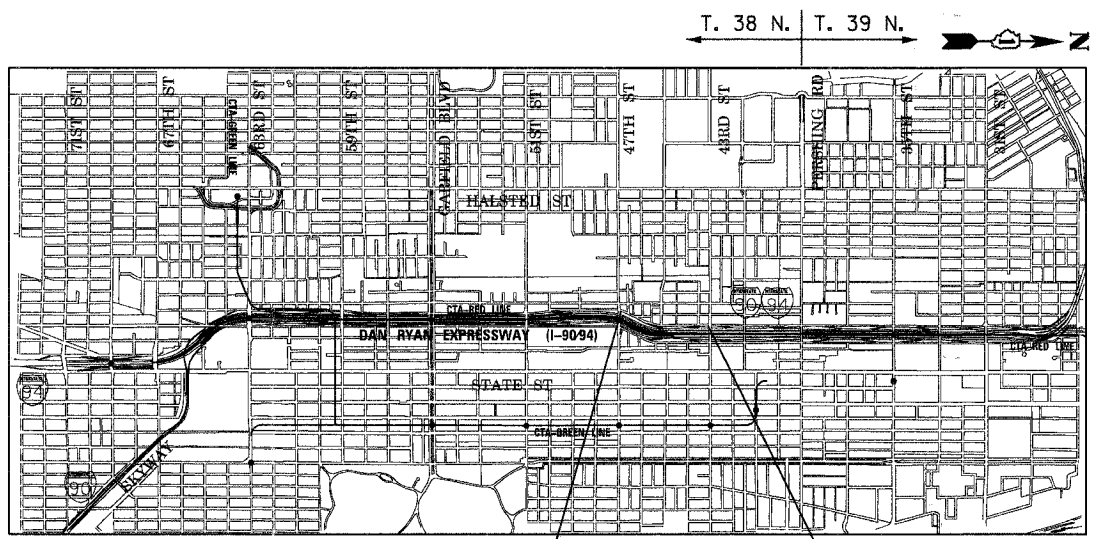
FRONTAGE ROAD:	ADT (2020)	DESIGN SPEED	POSTED SPEED
WENTWORTH AVE	11,000	30	25



FULL SIZE PLANS HAVE BEEN PREPARED USING STANDARD ENGINEERING SCALES. REDUCED SIZED PLANS WILL NOT CONFORM TO STANDARD SCALES. IN MAKING MEASUREMENTS ON REDUCED PLANS, THE ABOVE SCALES MAY BE USED.

BEFORE EXCAVATING CALL:
(J.U.L.I.E.) JOINT UTILITY LOCATION INFORMATION FOR EXCAVATION
1-800-892-0123 OR 811

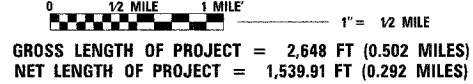
CONTRACT NO. 62995



PROJECT BEGINS
SB WENTWORTH AVE
STA 5074 + 05.69

PROJECT ENDS
SB WENTWORTH AVE
STA 30 + 02.03

LOCATION MAP



STATE OF ILLINOIS
DEPARTMENT OF TRANSPORTATION
DIVISION OF HIGHWAYS

SUBMITTED APRIL 29, 2008
Diana M. O'Keefe DEPUTY DIRECTOR OF HIGHWAYS, REGION ENGINEER
June 27, 2008
Eric E. Harrel ENGINEER OF DESIGN AND ENVIRONMENT
June 27, 2008
Christine M. Reed DIRECTOR OF HIGHWAYS, CHIEF ENGINEER

PRINTED BY THE AUTHORITY
OF THE STATE OF ILLINOIS

BOWMAN, BARRETT & ASSOCIATES INC.
CONSULTING ENGINEERS
Chicago, Illinois
312.228.0100
www.bbainc.com

DISTRICT ONE DESIGNCONSULTANT SERVICES PROJECT MANAGER
RAJENDRA SHAH (847) 705-4555