

F.A.I.	SECTION	COUNTY	TOTAL SHEETS	SHEET NO.
94/90		COOK	41	6
STA.		TO STA.		
FED. ROAD DIST. NO.	ILLINOIS	FED. AID PROJECT		

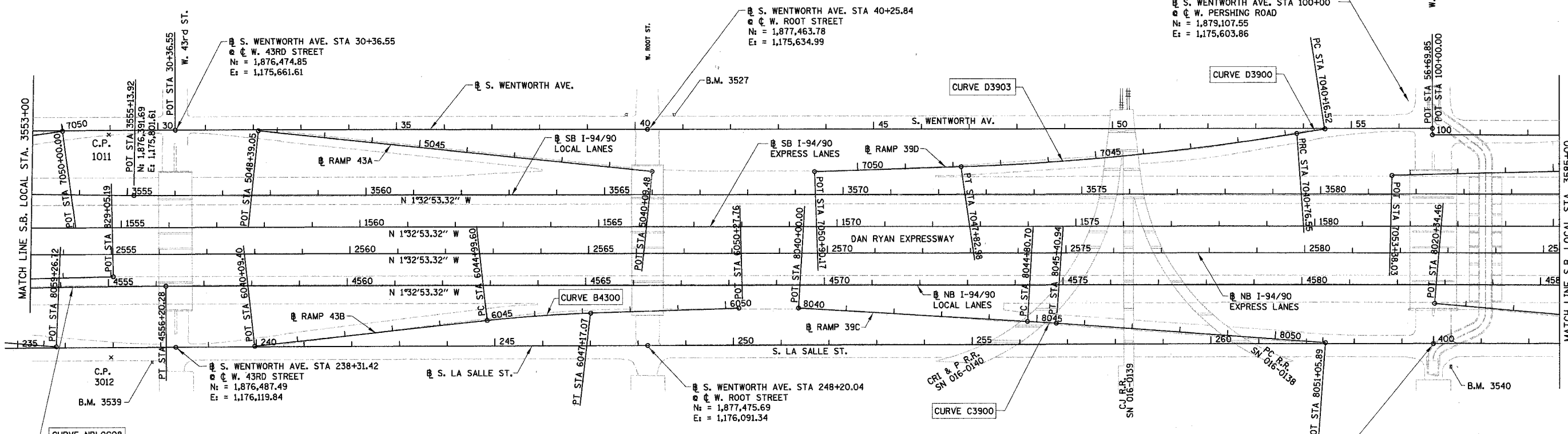
62995

PROP. CURVE D3903
 P.I. STA = 7044+30.25
 N_t = 1,878,475.96
 E_t = 1,175,675.24
 $\Delta = 7^\circ 22' 41''$ (RT)
 D = 1° 02' 40"
 R = 5,486.00'
 T = 353.70'
 L = 706.43'
 E = 11.39'
 P.C. STA = 7040+76.55
 N_t = 1,878,823.36
 E_t = 1,175,608.75
 P.T. STA = 7047+82.98
 N_t = 1,878,122.90
 E_t = 1,175,696.57

PROP. CURVE D3900
 P.I. STA = 7040+46.54
 N_t = 1,878,852.84
 E_t = 1,175,603.11
 $\Delta = 0^\circ 47' 26''$ (LT)
 D = 1° 19' 02"
 R = 4,350.00'
 T = 30.02'
 L = 60.03'
 E = 0.10'
 P.C. STA = 7040+16.52
 N_t = 1,878,882.40
 E_t = 1,175,597.87
 P.T. STA = 7040+76.55
 N_t = 1,878,823.36
 E_t = 1,175,608.75

W. PERSHING RD.
 @ S. WENTWORTH AVE. STA 56+69.85
 @ W. PERSHING ROAD
 N_t = 1,879,107.55
 E_t = 1,175,590.76

@ S. WENTWORTH AVE. STA 100+00
 @ W. PERSHING ROAD
 N_t = 1,879,107.55
 E_t = 1,175,603.86



PROP. CURVE NBLOC08
 P.I. STA = 4554+19.42
 N_t = 1,876,262.66
 E_t = 1,175,997.17
 $\Delta = 1^\circ 32' 04''$ (RT)
 D = 0° 22' 55"
 R = 15,000.00'
 T = 200.89'
 L = 401.75'
 E = 1.35'
 P.C. STA = 4552+18.53
 N_t = 1,876,062.07
 E_t = 1,176,007.97
 P.T. STA = 4556+20.28
 N_t = 1,876,463.47
 E_t = 1,175,991.74

PROP. CURVE B4300
 P.I. STA = 6046+08.39
 N_t = 1,877,246.14
 E_t = 1,176,032.59
 $\Delta = 4^\circ 21' 02''$ (RT)
 D = 2° 00' 02"
 R = 2,864.00'
 T = 108.79'
 L = 217.47'
 E = 2.07'
 e = 3.0%
 S.A. = STA 6044+79.60
 TO 6045+09.60
 S.R. = STA 6047+07.07
 TO 6047+37.07
 P.C. STA = 6044+99.60
 N_t = 1,877,138.36
 E_t = 1,176,047.37
 P.T. STA = 6047+17.07
 N_t = 1,877,354.72
 E_t = 1,176,026.03

PROP. CURVE C3900
 P.I. STA = 8045+10.82
 N_t = 1,878,300.35
 E_t = 1,176,021.08
 $\Delta = 0^\circ 41' 25''$ (RT)
 D = 1° 08' 45"
 R = 5,000.00'
 T = 30.12'
 L = 60.24'
 E = 0.09'
 P.C. STA = 8044+80.70
 N_t = 1,878,270.25
 E_t = 1,176,020.07
 P.T. STA = 8045+40.94
 N_t = 1,878,330.44
 E_t = 1,176,022.46

@ S. LASALLE ST. STA 400+00.00 AH
 @ W. PERSHING ROAD STA 264+66.03 BK
 N_t = 1,879,121.00
 E_t = 1,176,043.89

- NOTES:
- AVERAGE GRID TO GROUND CONVERSION
FACTOR = 1.000010988654360
 - FOR BENCH MARK INFORMATION, SEE SHEET ALT-16 OF ALIGNMENT PLAN SHEETS.
 - FOR RAMP P.O.T. INFORMATION, SEE SHEET ALT-16 OF ALIGNMENT PLAN SHEETS.

REVISIONS	NAME	DATE

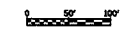
ILLINOIS DEPARTMENT OF TRANSPORTATION
 F.A.I. 94/90 (DAN RYAN EXPRESSWAY)
 SOUTHBOUND KNEE WALLS (47TH ST TO 43RD ST)

ALIGNMENT PLAN

SCALE: 1"=100'
 DATE: 04/25/08

DRAWN BY: JDC
 CHECKED BY: RS

BOWMAN, BARRETT & ASSOCIATES INC.
 CONSULTING ENGINEERS
 Chicago, Illinois
 312.228.0100
 www.bbainc.com



ALT-02
 6/24/08