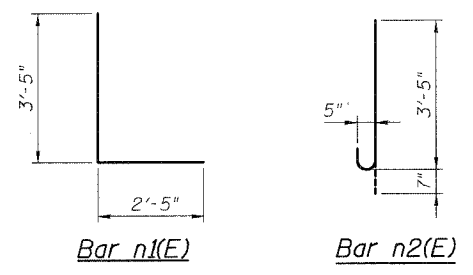
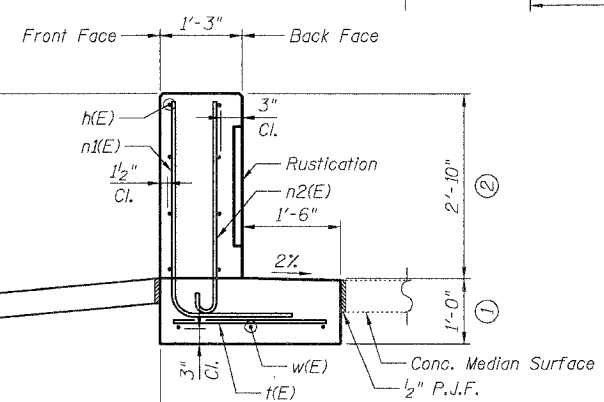
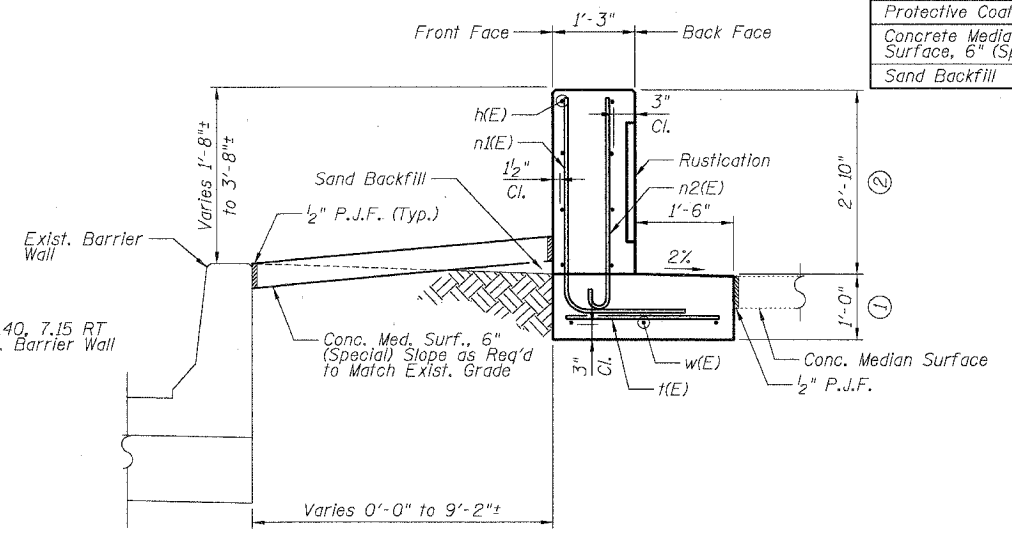
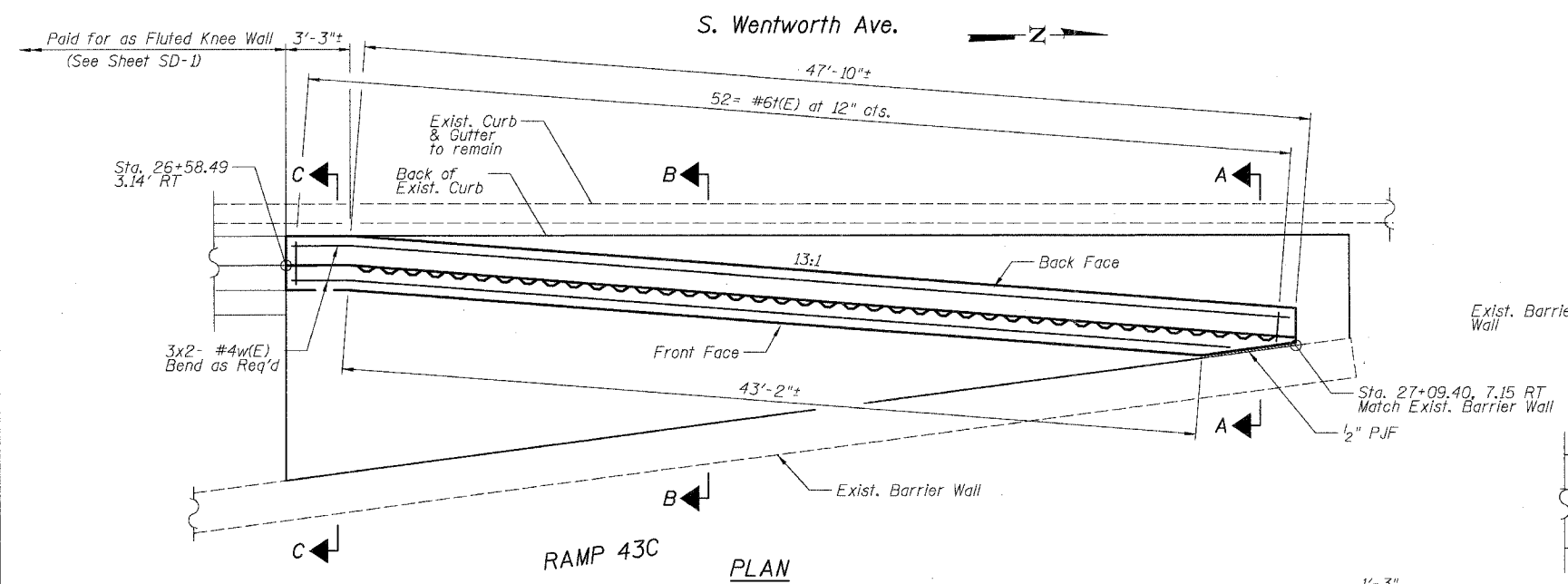
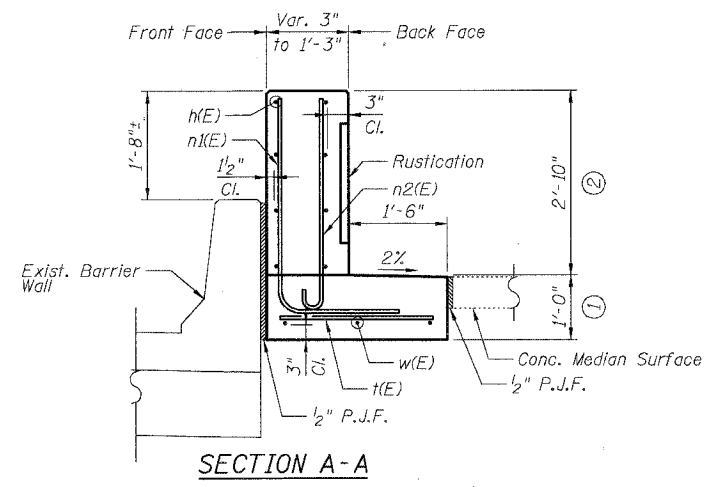
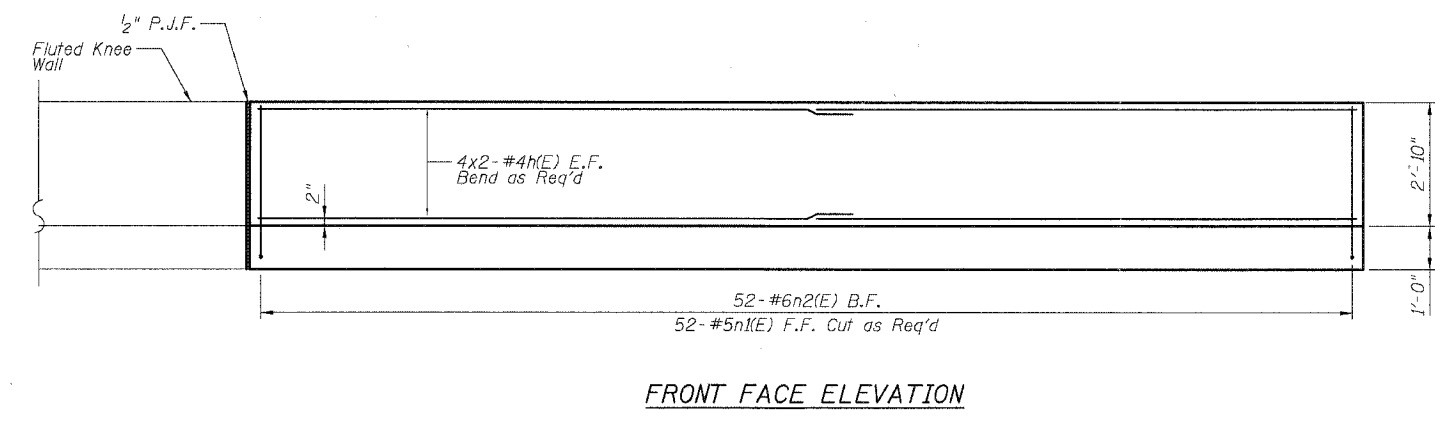


F.A.I.	SECTION	COUNTY	TOTAL SHEETS	SHEET NO.
94/90		COOK	41	20
STA.	TO STA.			
FED. ROAD DIST. NO.	ILLINOIS	FED. AID PROJECT		

**DETAIL D REINFORCEMENT SCHEDULE AND BILL OF MATERIAL**

Bar	No.	Size	Length	Shape
n(E)	16	#4	26'-3"	
n(E)	52	#5	5'-10"	L
n2(E)	52	#5	4'-0"	C
k(E)	52	#6	2'-5"	
w(E)	6	#4	26'-3"	
Item	Unit	Qty.		
Concrete Structures	Cu. Yd.	5.3		
Concrete Superstructure	Cu. Yd.	6.7		
Reinforcement Bars, Epoxy Coated	Pound	1110		
Rustication Finish	Sq. Ft.	94		
Protective Coat	Sq. Yd.	32		
Concrete Median Surface, 6" (Special)	Sq. Ft.	235		
Sand Backfill	Cu. Yd.	6		



**NOTES:**

- All stations and offsets measured from S. Wentworth Ave.  $\perp$ .
- Back Face is face adjacent to Frontage Rd. and Front Face is face adjacent to Expressway.
- Concrete:  $f'c = 3500$  psi
- Provide California Finish on top of foundation between stem and Frontage Road. See Roadway Details.
- At locations where Fluted Knee Wall abuts a rigid Structure, a 2" thick Preformed Expansion Joint Filler conforming to the shape of the Structure shall be installed between the Fluted Knee Wall and the Structure.
- Apply Protective Coat to top and back face of stem and top of Frontage Road side of foundation.
- For Fluted Knee Wall standard details, see Sheet SD-1
- B.F. = Back Face (Frontage Road Side)  
F.F. = Front Face (Expressway Side)  
E.F. = Each Face
- Shape finished grade as required to match existing conditions.
- P.J.F. included in cost of concrete structures.

BOWMAN, BARRETT & ASSOCIATES INC.  
CONSULTING ENGINEERS  
Chicago, Illinois  
312.228.0100  
www.bbandainc.com

REVISIONS	
NAME	DATE

SHEET SD-4  
ILLINOIS DEPARTMENT OF TRANSPORTATION  
F.A.I. 94/90 (DAN RYAN EXPRESSWAY)  
SOUTHBOUND KNEE WALLS (47TH ST TO 43RD ST)

SCALE: NTS  
DATE: 04/25/08  
DRAWN BY: TL  
CHECKED BY: BLU

44825 PI 4/24/2008