

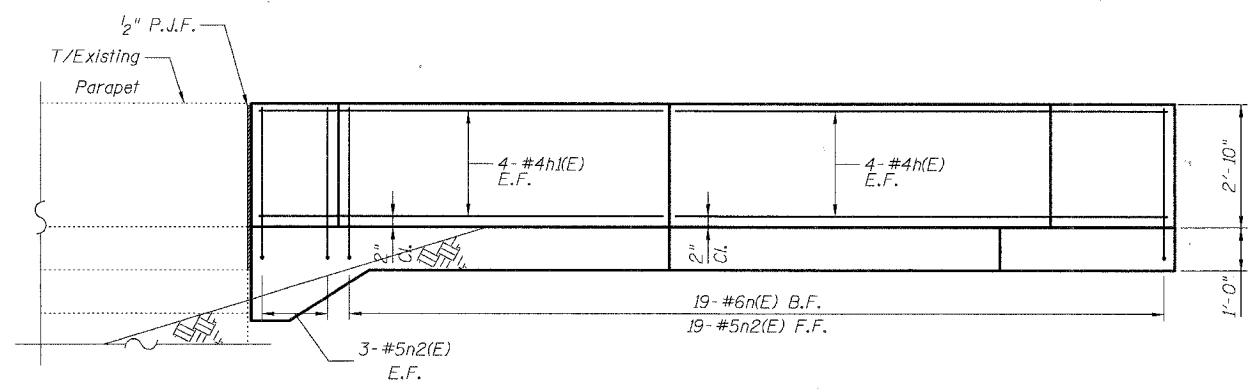
F.A.I.	SECTION	COUNTY	TOTAL SHEETS	SHEET NO.
94/90		COOK	41	21
STA.	TO STA.			
FED. ROAD DIST. NO.	ILLINOIS	FED. AID PROJECT		
62995				

DETAIL E REINFORCEMENT SCHEDULE AND BILL OF MATERIAL

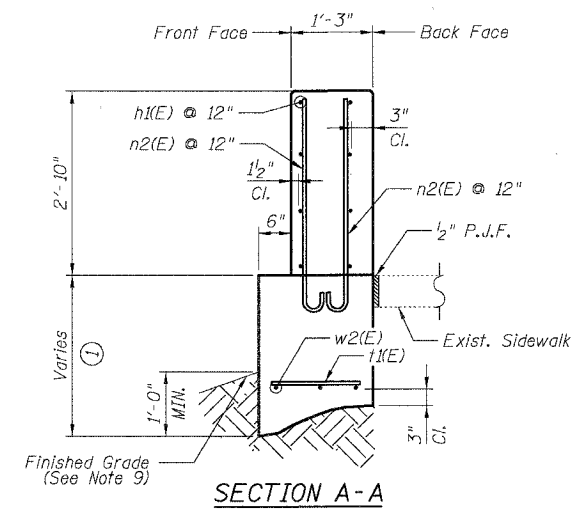
Bar	No.	Size	Length	Shape
h(E)	8	#4	9'-10"	
h1(E)	8	#4	10'-6"	
h2(E)	2	#4	4'-0"	
n(E)	19	#6	5'-6"	
n2(E)	25	#5	4'-0"	
t(E)	3	#6	3'-8"	
t1(E)	19	#6	1'-5"	
w(E)	4	#4	3'-1"	
w1(E)	4	#4	16'-5"	
w2(E)	3	#4	1'-8"	
Item				Unit Qty.
Concrete Structures			Cu. Yd.	2.9
Concrete Superstructure			Cu. Yd.	2.8
Reinforcement Bars, Epoxy Coated			Pound	490
Rustication Finish			Sq. Ft.	2
Protective Coat			Sq. Yd.	14

NOTES:

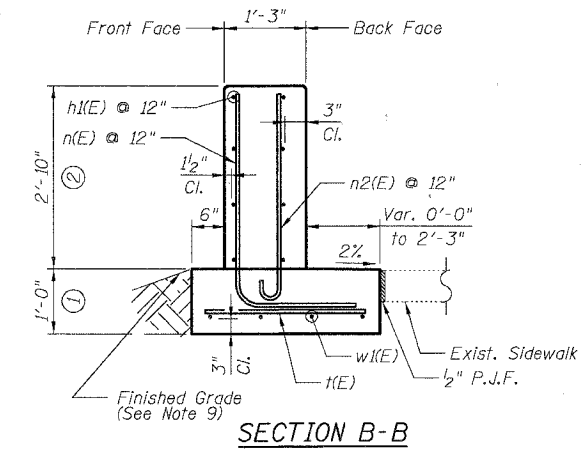
- All stations and offsets measured from S. Wentworth Ave. \perp .
- Back Face is face adjacent to Frontage Rd. and Front Face is face adjacent to Expressway.
- Concrete: f'c = 3500 psi
- Provide California Finish on top of foundation between stem and Frontage Road. See Roadway Details.
- At locations where Fluted Knee Wall abuts a rigid Structure, a 1/2" thick Preformed Expansion Joint Filler conforming to the shape of the Structure shall be installed between the Fluted Knee Wall and the Structure.
- Apply Protective Coat to top and back face of stem and top of Frontage Road side of foundation.
- For Fluted Knee Wall standard details, see Sheet SD-1
- B.F. = Back Face (Frontage Road Side)
F.F. = Front Face (Expressway Side)
E.F. = Each Face
- Shape finished grade as required to match existing conditions.
- P.J.F. included in cost of concrete structures.



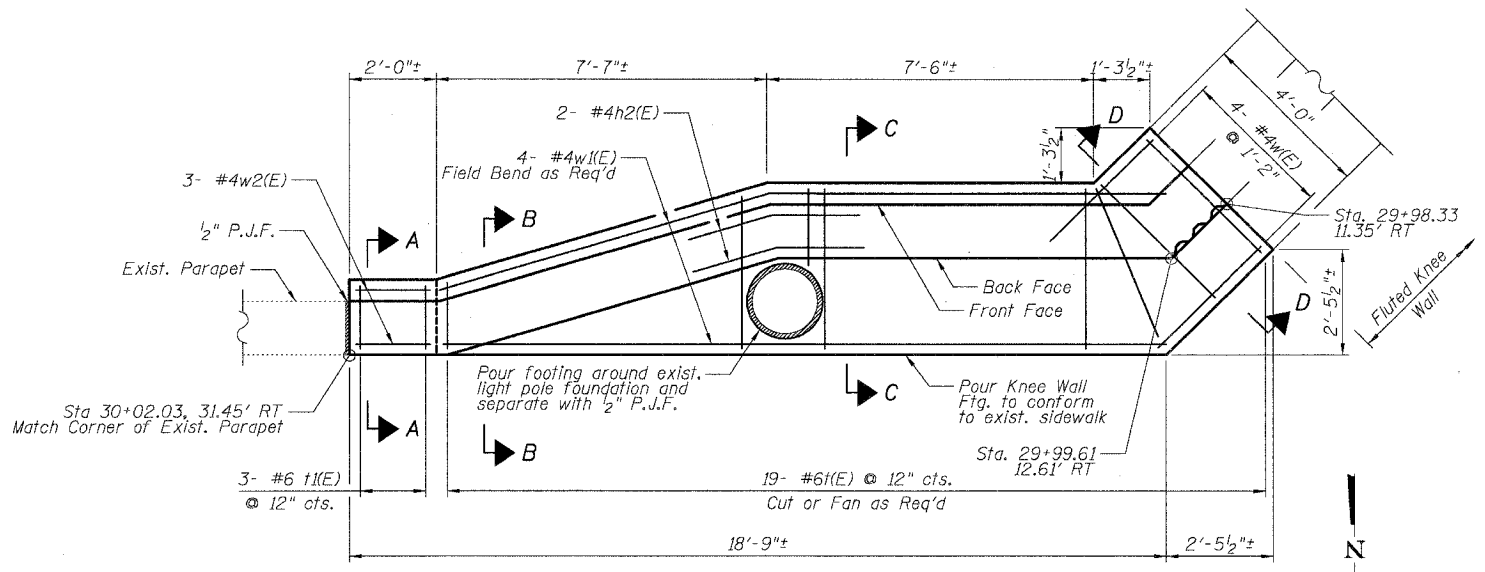
UNFOLDED ELEVATION



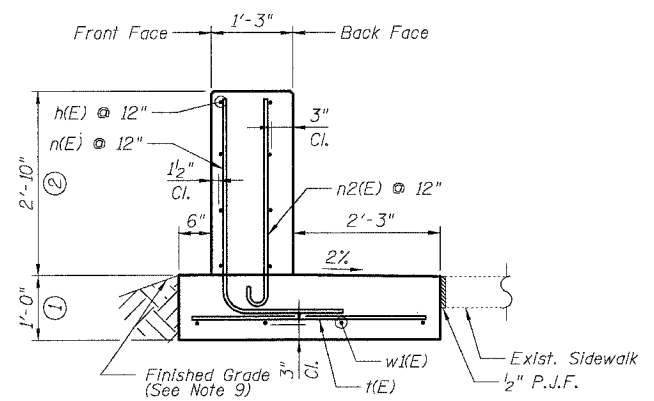
SECTION A-A



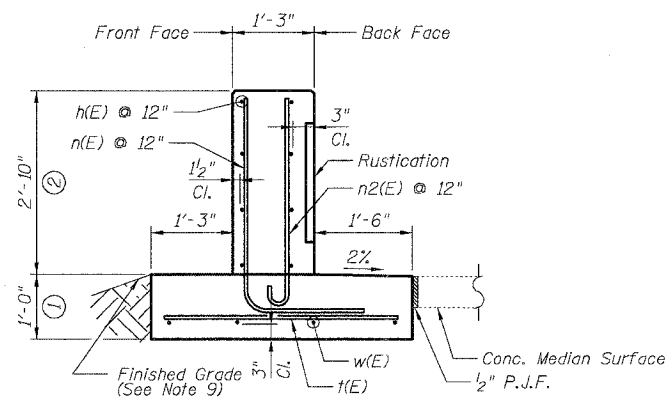
SECTION B-B



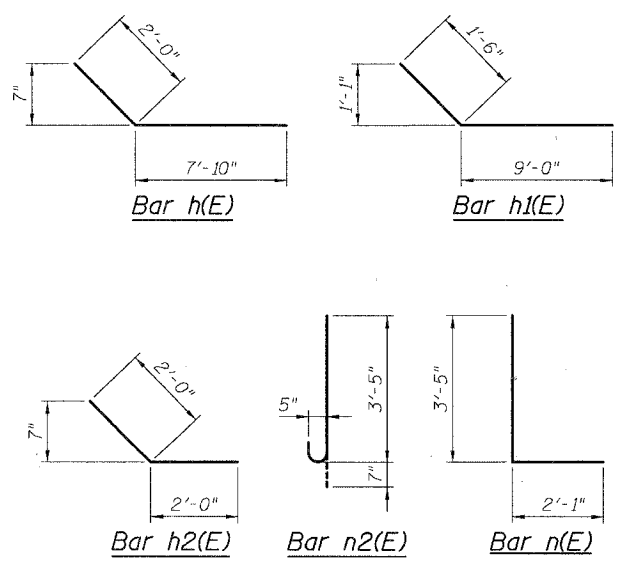
PLAN



SECTION C-C



SECTION D-D



REVISIONS	
NAME	DATE

ILLINOIS DEPARTMENT OF TRANSPORTATION
F.A.I. 94/90 (DAN RYAN EXPRESSWAY)
SOUTHBOUND KNEE WALLS (47TH ST TO 43RD ST)

DETAIL E

SCALE: NTS
DATE: 04/25/08
DRAWN BY: TL
CHECKED BY: BLU

BOWMAN, BARRETT & ASSOCIATES INC.
CONSULTING ENGINEERS
Chicago, Illinois
312.228.0100
www.bbainc.com

44624 FH 7/24/2008