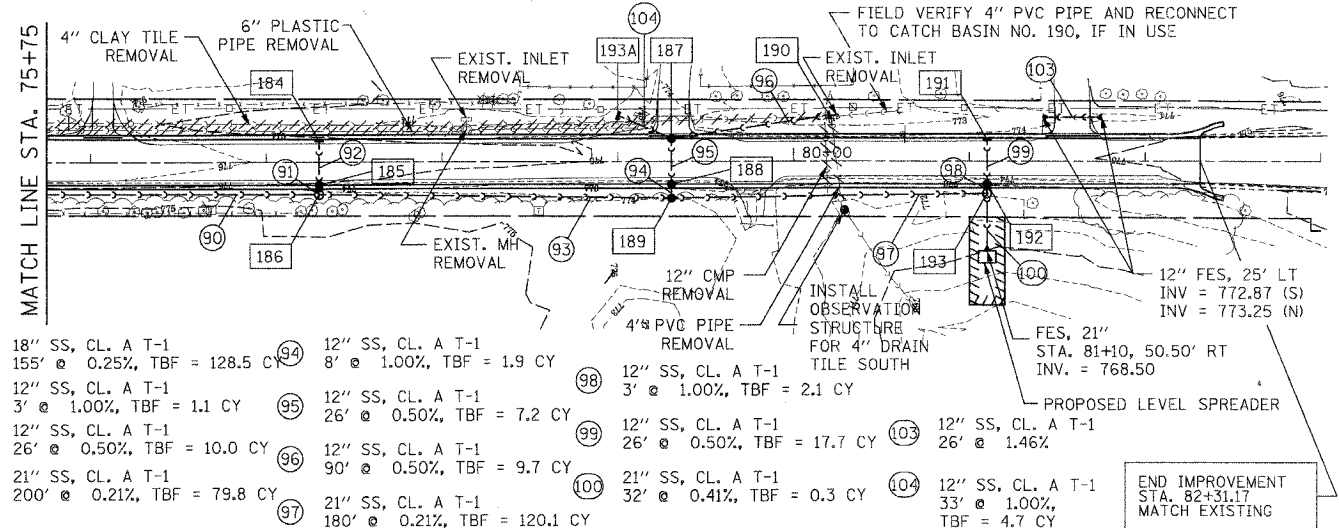


F.A. RTE.	SECTION	COUNTY	TOTAL SHEETS	SHEET NO.
	03-00052-00-PV	LAKE	78	35
STA. 75+75		TO STA. 82+32		
FED. ROAD DIST. NO.		ILLINOIS FED. AID PROJECT		
CONTRACT NUMBER 63002				

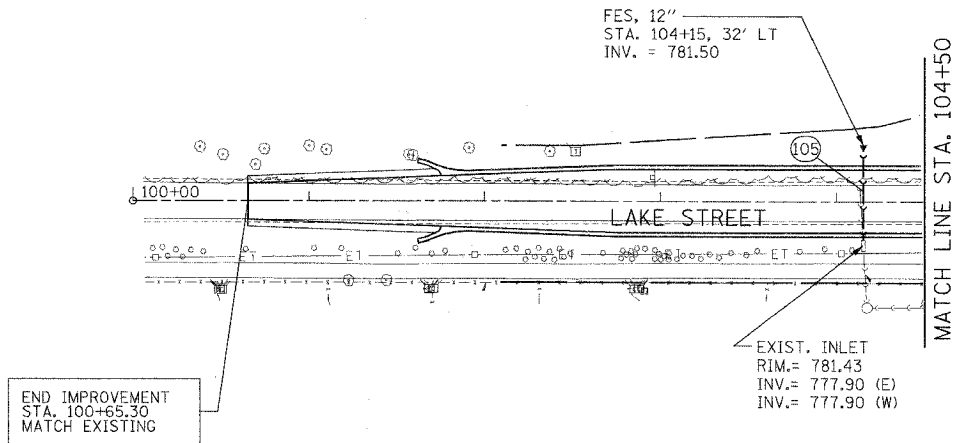
- 184 INLET, TY A, TY 24 F&G
STA. 77+30, 13' LT
RIM = 774.66
INV = 770.33 (E)
- 185 CB, TY A, 4'D., TY 24 F&G
STA. 77+30, 13' RT
RIM = 774.66
INV = 770.20 (E)
INV = 770.20 (W)
- 186 RD MH, TY A, 4'D., TY 1 F&L
STA. 77+30, 18.5' RT
RIM = 774.50
INV = 769.67 (S)
INV = 769.42 (N)
INV = 770.17 (W)
- 187 RD CB, TY A, 4'D., TY 24 F&G
STA. 79+30.42, 13' LT
RIM = 773.25
INV = 769.97 (N)
INV = 769.97 (E)
- 188 RD CB, TY A, 4'D., TY 24 F&G
STA. 79+30.42, 13' RT
RIM = 773.25
INV = 769.84 (E)
INV = 769.84 (W)
- 189 MH, TY A, 4'D., TY 1 F&G (OPEN LID)
STA. 79+30.42, 21' RT
RIM = 772.50
INV = 769.01 (S)
INV = 769.01 (N)
INV = 769.76 (W)
- 190 INLET, TY A, TY 8 GRATE
STA. 80+21.51, 26' LT
RIM = 772.20
INV = 770.42
- 191 INLET, TY A, TY 24 F&G
STA. 81+10, 13' LT
RIM = 774.32
INV = 769.54 (E)
- 192 CB, TY A, 4'D., TY 24 F&G
STA. 81+10, 13' RT
RIM = 774.32
INV = 769.41 (E)
INV = 769.41 (W)
- 193 RD MH, TY A, 4'D., TY 1 F&L
STA. 81+10, 18.5' RT
RIM = 774.50
INV = 768.63 (S)
INV = 768.63 (E)
INV = 769.38 (W)
- 193A INLET, TY A, TY 8 GRATE
STA. 79+00, 26' LT
RIM = 773.30
INV = 770.30



- 90 18" SS, CL. A T-1
155' @ 0.25%, TBF = 128.5 CY
- 91 12" SS, CL. A T-1
3' @ 1.00%, TBF = 1.1 CY
- 92 12" SS, CL. A T-1
26' @ 0.50%, TBF = 10.0 CY
- 93 21" SS, CL. A T-1
200' @ 0.21%, TBF = 79.8 CY
- 94 12" SS, CL. A T-1
8' @ 1.00%, TBF = 1.9 CY
- 95 12" SS, CL. A T-1
26' @ 0.50%, TBF = 7.2 CY
- 96 12" SS, CL. A T-1
90' @ 0.50%, TBF = 9.7 CY
- 97 21" SS, CL. A T-1
180' @ 0.21%, TBF = 120.1 CY
- 98 12" SS, CL. A T-1
3' @ 1.00%, TBF = 2.1 CY
- 99 12" SS, CL. A T-1
26' @ 0.50%, TBF = 17.7 CY
- 100 21" SS, CL. A T-1
32' @ 0.41%, TBF = 0.3 CY
- 101 12" SS, CL. A T-1
26' @ 1.46%
- 102 12" SS, CL. A T-1
33' @ 1.00%, TBF = 4.7 CY

NOTE:
FOR PIPE UNDERDRAIN LOCATIONS, REFER TO THE SCHEDULE OF QUANTITIES, PAGE 8.

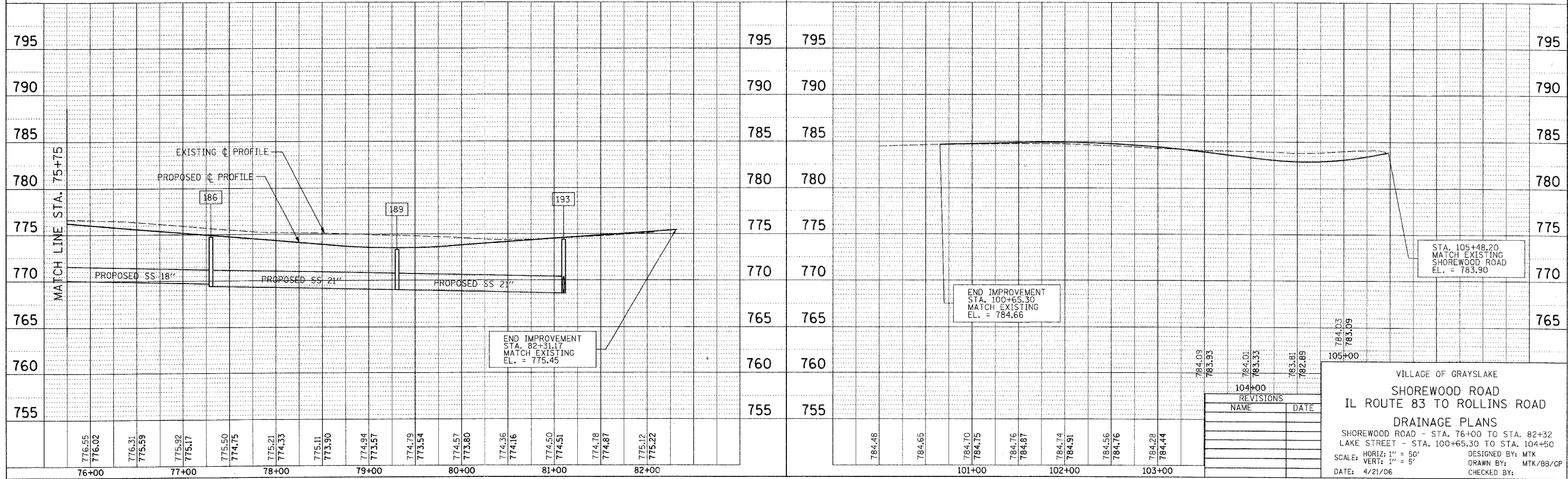
NOTE:
FOR PIPE UNDERDRAIN LOCATIONS, REFER TO THE SCHEDULE OF QUANTITIES, PAGE 8.



- 105 12" SS, CL. A T-1
54' @ 6.67%, TBF = 6.3 CY

SHOREWOOD ROAD

LAKE STREET



REVISIONS	
NAME	DATE

VILLAGE OF GRAYSLAKE
SHOREWOOD ROAD
IL ROUTE 83 TO ROLLINS ROAD
DRAINAGE PLANS
SHOREWOOD ROAD - STA. 76+00 TO STA. 82+32
LAKE STREET - STA. 100+65.30 TO STA. 104+50
SCALE: HORIZ: 1" = 50'
VERT: 1" = 5'
DATE: 4/21/06
DESIGNED BY: MTK
DRAWN BY: MTK/BB/CP
CHECKED BY:

DATE	BY

DATE	BY