

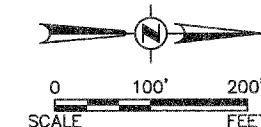
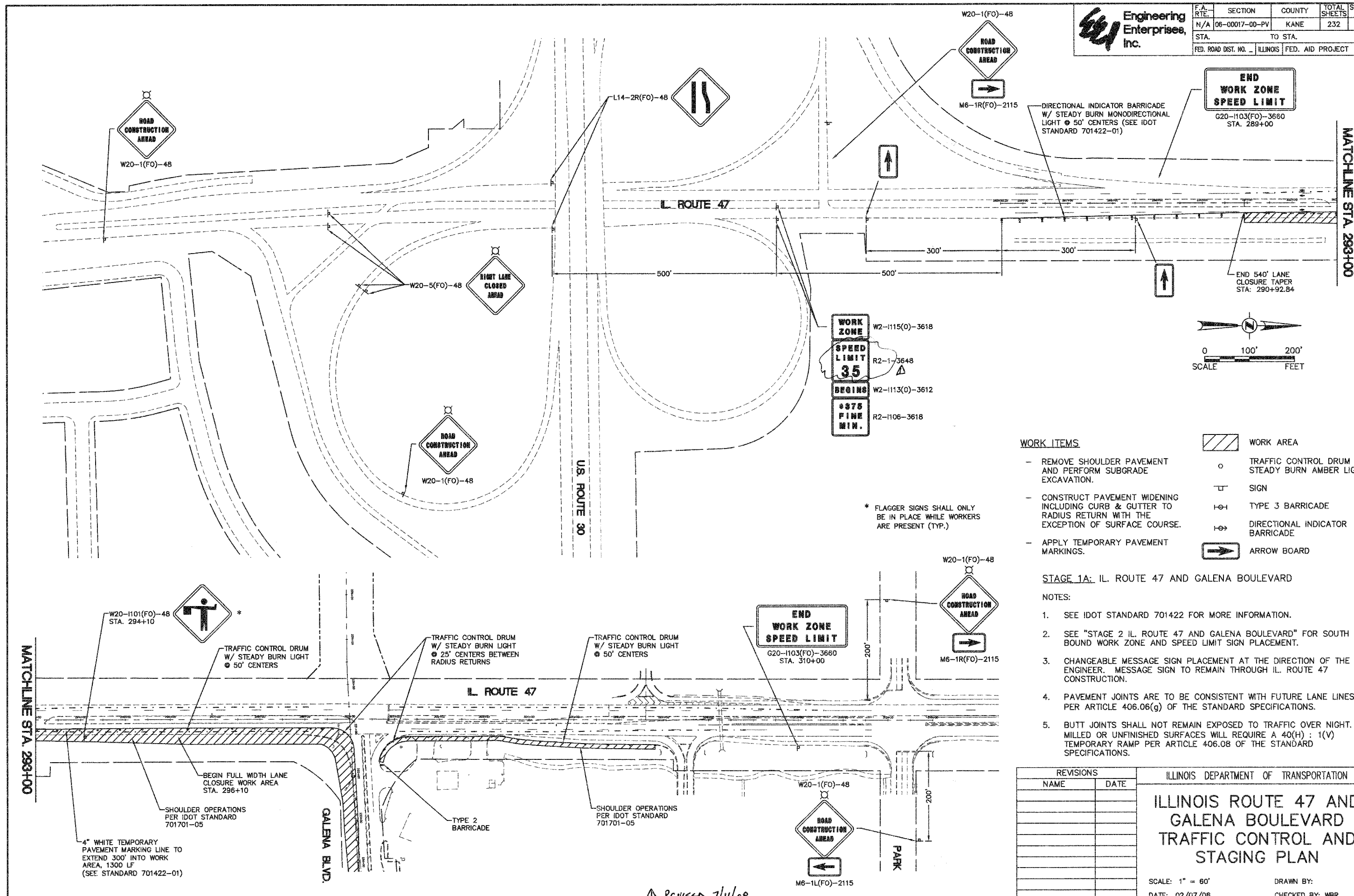


F.A. RTE.	SECTION	COUNTY	TOTAL SHEETS	SHEET NO.
N/A	06-00017-00-PV	KANE	232	66

STA. \_\_\_\_\_ TO STA. \_\_\_\_\_  
FED. ROAD DIST. NO. \_\_\_\_\_ ILLINOIS FED. AID PROJECT

PLAN	DATE
SURVEYED	
NOTED	
CHECKED	
BY	
DATE	
NO.	

PROFILE	DATE
SURVEYED	
NOTED	
CHECKED	
BY	
DATE	
NO.	



WORK ITEMS

- REMOVE SHOULDER PAVEMENT AND PERFORM SUBGRADE EXCAVATION.
  - CONSTRUCT PAVEMENT WIDENING INCLUDING CURB & GUTTER TO RADIUS RETURN WITH THE EXCEPTION OF SURFACE COURSE.
  - APPLY TEMPORARY PAVEMENT MARKINGS.
- |  |   |
|--|---|
|  | WORK AREA                                       |
|  | TRAFFIC CONTROL DRUM W/ STEADY BURN AMBER LIGHT |
|  | SIGN  |
|  | TYPE 3 BARRICADE                                |
|  | DIRECTIONAL INDICATOR BARRICADE                 |
|  | ARROW BOARD                                     |

STAGE 1A: IL. ROUTE 47 AND GALENA BOULEVARD

- NOTES:
1. SEE IDOT STANDARD 701422 FOR MORE INFORMATION.
  2. SEE "STAGE 2 IL. ROUTE 47 AND GALENA BOULEVARD" FOR SOUTH BOUND WORK ZONE AND SPEED LIMIT SIGN PLACEMENT.
  3. CHANGEABLE MESSAGE SIGN PLACEMENT AT THE DIRECTION OF THE ENGINEER. MESSAGE SIGN TO REMAIN THROUGH IL. ROUTE 47 CONSTRUCTION.
  4. PAVEMENT JOINTS ARE TO BE CONSISTENT WITH FUTURE LANE LINES PER ARTICLE 406.06(g) OF THE STANDARD SPECIFICATIONS.
  5. BUTT JOINTS SHALL NOT REMAIN EXPOSED TO TRAFFIC OVER NIGHT. MILLED OR UNFINISHED SURFACES WILL REQUIRE A 40(H) : 1(V) TEMPORARY RAMP PER ARTICLE 406.08 OF THE STANDARD SPECIFICATIONS.

REVISIONS	
NAME	DATE

ILLINOIS DEPARTMENT OF TRANSPORTATION

### ILLINOIS ROUTE 47 AND GALENA BOULEVARD TRAFFIC CONTROL AND STAGING PLAN

SCALE: 1" = 60'  
DATE: 02/07/08

DRAWN BY: \_\_\_\_\_  
CHECKED BY: WBR

Plotted: July 7, 2008 @ 9:53 AM By: Kris Pung - Tab: 66 STAGE 1A (22x34)

▲ Revised 7/11/08