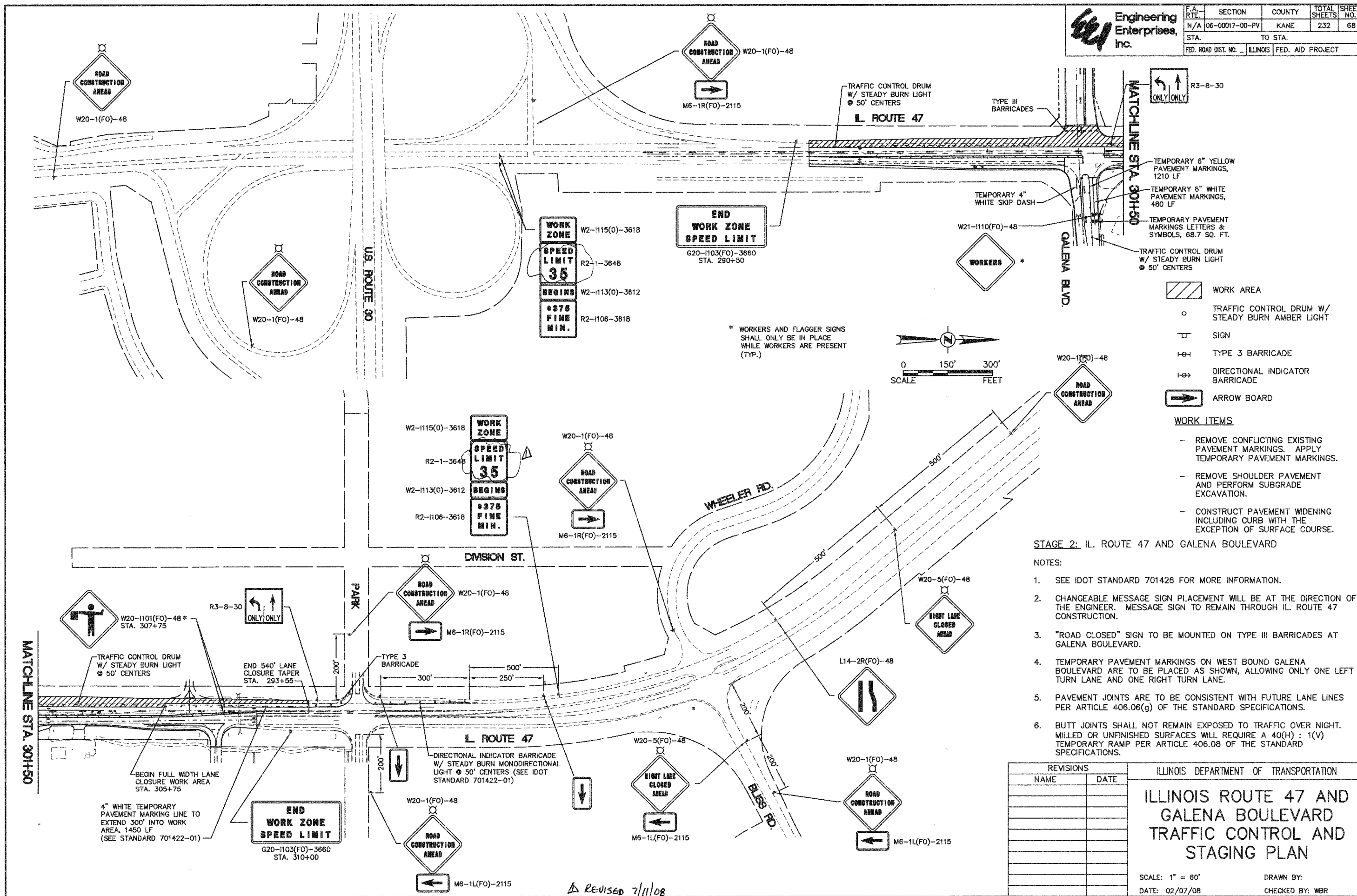


F.A. SECTION	COUNTY	TOTAL SHEETS	SHEET NO.
N/A 06-00017-00-PV	KANE	232	68
STA. TO STA.		FED. ROAD DIST. NO. ILLINOIS FED. AID PROJECT	

DATE	BY	REVISIONS
		1. SURVEYED
		2. PLAN CHECKED
		3. ALIGNED
		4. AMOUNT CHECKED
		5. RT. OF WAY CHECKED
		6. PAID FILE NAME
		7. NO.

DATE	BY	REVISIONS
		1. SURVEYED
		2. PROFILE CHECKED
		3. B.M. NOTED
		4. STRUCTURE NOTATIONS OK'D
		5. NO.



- WORK AREA
- TRAFFIC CONTROL DRUM W/ STEADY BURN AMBER LIGHT
- SIGN
- TYPE 3 BARRICADE
- DIRECTIONAL INDICATOR BARRICADE
- ARROW BOARD

- WORK ITEMS**
- REMOVE CONFLICTING EXISTING PAVEMENT MARKINGS. APPLY TEMPORARY PAVEMENT MARKINGS.
 - REMOVE SHOULDER PAVEMENT AND PERFORM SUBGRADE EXCAVATION.
 - CONSTRUCT PAVEMENT WIDENING INCLUDING CURB WITH THE EXCEPTION OF SURFACE COURSE.

STAGE 2: IL. ROUTE 47 AND GALENA BOULEVARD

- NOTES:**
- SEE IDOT STANDARD 701426 FOR MORE INFORMATION.
 - CHANGEABLE MESSAGE SIGN PLACEMENT WILL BE AT THE DIRECTION OF THE ENGINEER. MESSAGE SIGN TO REMAIN THROUGH IL. ROUTE 47 CONSTRUCTION.
 - "ROAD CLOSED" SIGN TO BE MOUNTED ON TYPE III BARRICADES AT GALENA BOULEVARD.
 - TEMPORARY PAVEMENT MARKINGS ON WEST BOUND GALENA BOULEVARD ARE TO BE PLACED AS SHOWN, ALLOWING ONLY ONE LEFT TURN LANE AND ONE RIGHT TURN LANE.
 - PAVEMENT JOINTS ARE TO BE CONSISTENT WITH FUTURE LANE LINES PER ARTICLE 406.06(g) OF THE STANDARD SPECIFICATIONS.
 - BUTT JOINTS SHALL NOT REMAIN EXPOSED TO TRAFFIC OVER NIGHT. MILLED OR UNFINISHED SURFACES WILL REQUIRE A 40(H) : 1(V) TEMPORARY RAMP PER ARTICLE 406.08 OF THE STANDARD SPECIFICATIONS.

REVISIONS	
NAME	DATE

ILLINOIS DEPARTMENT OF TRANSPORTATION

ILLINOIS ROUTE 47 AND GALENA BOULEVARD TRAFFIC CONTROL AND STAGING PLAN

SCALE: 1" = 60'
DATE: 02/07/08

DRAWN BY:
CHECKED BY: WBR

REVISIO 7/11/08