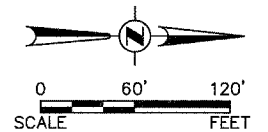




F.A. RTE.	SECTION	COUNTY	TOTAL SHEETS	SHEET NO.
N/A	06-00017-00-PV	KANE	232	62
STA.		TO STA.		
FED. ROAD DIST. NO.		ILLINOIS FED. AID PROJECT		



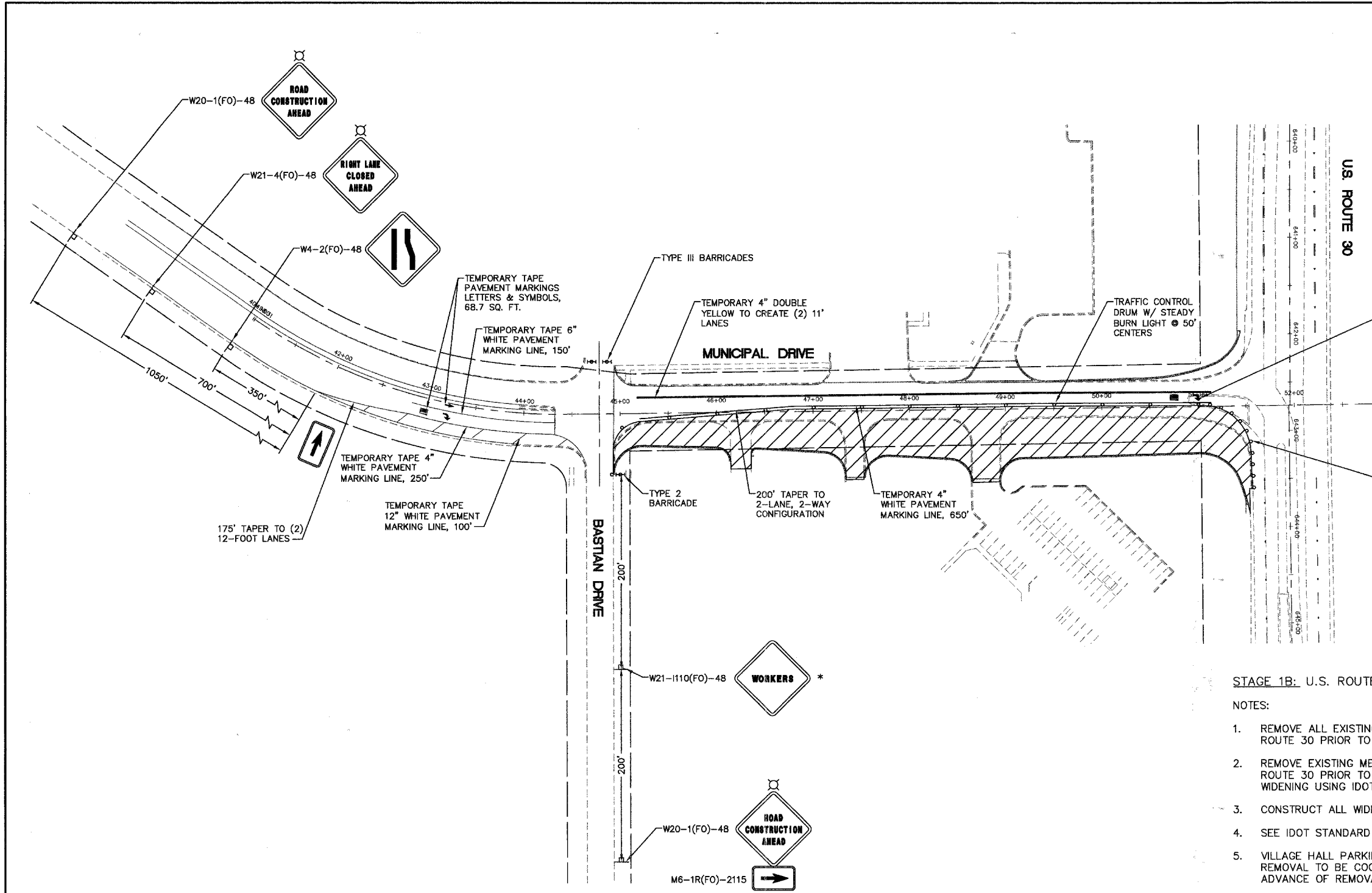
- WORK AREA
- TRAFFIC CONTROL DRUM W/ STEADY BURN AMBER LIGHT
- SIGN
- TYPE 3 BARRICADE
- DIRECTIONAL INDICATOR BARRICADE
- ARROW BOARD

- WORK ITEMS**
- REMOVE CURB AND GUTTER, TREES, AND OTHER MISCELLANEOUS ITEMS AS SHOWN IN REMOVAL PLAN.
  - CONSTRUCT DRAINAGE ITEMS.
  - CONSTRUCT PAVEMENT AND WIDENING INCLUDING CURB & GUTTER, STORM SEWER, LIGHTING, AND DRIVEWAYS WITH THE EXCEPTION OF FINAL SURFACE.
  - BIKE PATH.

PLAN	SUBMITTED	DATE
NOTE BOOK	PLOTTED	BY
NO.	ALIGNMENT CHECKED	
	GRADES CHECKED	
	STRUCTURE NOTATIONS CHECKED	
	DATE	

PROFILE	SUBMITTED	DATE
NOTE BOOK	PLOTTED	BY
NO.	GRADES CHECKED	
	STRUCTURE NOTATIONS CHECKED	
	DATE	

Plotted: May 27, 2008 @ 3:59 PM By: Kris Pung - Tab: 62, STAGE 1B (22434)



**STAGE 1B: U.S. ROUTE 30 AND MUNICIPAL DRIVE**

**NOTES:**

1. REMOVE ALL EXISTING CONFLICTING PAVEMENT MARKINGS BETWEEN BASTIAN DRIVE AND US ROUTE 30 PRIOR TO STAGE I.
2. REMOVE EXISTING MEDIAN ISLAND AT INTERSECTION OF MUNICIPAL DRIVE AND US ROUTE 30 PRIOR TO STAGE I. REPLACE WITH SAME TYPICAL SECTION AS PAVEMENT WIDENING USING IDOT STANDARD 701701-05.
3. CONSTRUCT ALL WIDENING OPERATIONS ALONG EAST SIDE OF MUNICIPAL DRIVE.
4. SEE IDOT STANDARD 701502-02 FOR STAGE I WIDENING SET-UP, SIGNAGE AND DETAILS.
5. VILLAGE HALL PARKING LOTS TO REMAIN ACCESSIBLE AT ALL TIMES. DRIVEWAY REMOVAL TO BE COORDINATED WITH THE VILLAGE OR ITS REPRESENTATIVES 48 HOURS IN ADVANCE OF REMOVAL OPERATIONS.
6. PAVEMENT JOINTS ARE TO BE CONSISTENT WITH FUTURE LANE LINES PER ARTICLE 406.06(g) OF THE STANDARD SPECIFICATIONS.
7. BUTT JOINTS SHALL NOT REMAIN EXPOSED TO TRAFFIC OVER NIGHT. MILLED OR UNFINISHED SURFACES WILL REQUIRE A 40(H) : 1(V) TEMPORARY RAMP PER ARTICLE 406.08 OF THE STANDARD SPECIFICATIONS.

\* WORKERS SIGNS SHALL ONLY BE IN PLACE WHILE WORKERS ARE PRESENT (TYP.)

REVISIONS	
NAME	DATE

ILLINOIS DEPARTMENT OF TRANSPORTATION

**U.S. ROUTE 30 AND MUNICIPAL DRIVE TRAFFIC CONTROL AND STAGING PLAN**

SCALE: 1" = 60'  
DATE: 02/07/08

DRAWN BY:  
CHECKED BY: WBR

Path: H:\SOSKPROJ\63023\63023-06\DWG\507032.DWG FINAL ENG\CONTRACT\B\B-505046-TRC1R