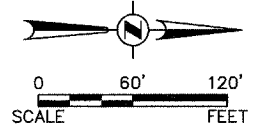


**Engineering Enterprises, Inc.**

F.A. RTE.	SECTION	COUNTY	TOTAL SHEETS	SHEET NO.
N/A	06-0017-00-PV	KANE	232	65
STA. TO STA.		FED. ROAD DIST. NO. - ILLINOIS FED. AID PROJECT		



- WORK AREA
- TRAFFIC CONTROL DRUM W/ STEADY BURN AMBER LIGHT
- SIGN
- TYPE 3 BARRICADE
- DIRECTIONAL INDICATOR BARRICADE
- ARROW BOARD

**WORK ITEMS**

- MILL AND OVERLAY MUNICIPAL DRIVE.
- PERMANENT PAVEMENT MARKINGS.

DATE	BY

PLAN

SURVEYED  
ALIGNED  
CHECKED  
NOTE BOOK  
NO. \_\_\_\_\_

PLOTTED  
CHECKED  
CADD FILE NAME  
NO. \_\_\_\_\_

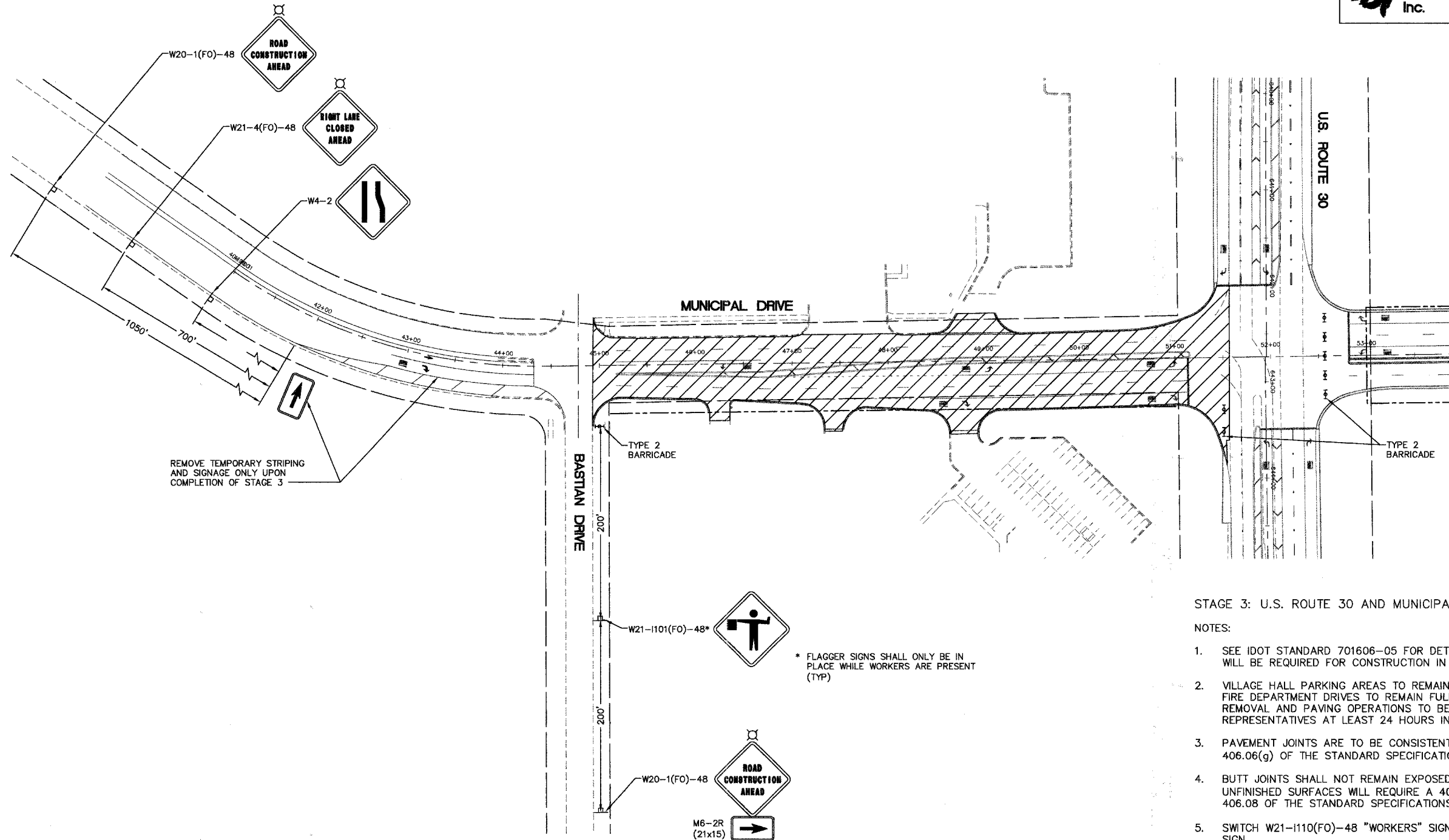
DATE	BY

PROFILE

SURVEYED  
GRADES CHECKED  
NOTE BOOK  
NO. \_\_\_\_\_

PLOTTED  
CHECKED  
STRUCTURE NOTATIONS CHYD  
NO. \_\_\_\_\_

Plotfile: May 27, 2008 @ 4:00 PM By: Kris Pung - Tab: 05 STAGE 3 (22x34)



**STAGE 3: U.S. ROUTE 30 AND MUNICIPAL DRIVE**

**NOTES:**

- SEE IDOT STANDARD 701606-05 FOR DETAILS OF DAYTIME LANE CLOSURES. FLAGGERS WILL BE REQUIRED FOR CONSTRUCTION IN THIS AREA.
- VILLAGE HALL PARKING AREAS TO REMAIN FULLY ACCESSIBLE DURING WORKING HOURS. FIRE DEPARTMENT DRIVES TO REMAIN FULLY ACCESSIBLE AT ALL TIMES. SURFACE REMOVAL AND PAVING OPERATIONS TO BE COORDINATED WITH THE VILLAGE OR ITS REPRESENTATIVES AT LEAST 24 HOURS IN ADVANCE OF SAID OPERATIONS.
- PAVEMENT JOINTS ARE TO BE CONSISTENT WITH FUTURE LANE LINES PER ARTICLE 406.06(g) OF THE STANDARD SPECIFICATIONS.
- BUTT JOINTS SHALL NOT REMAIN EXPOSED TO TRAFFIC OVER NIGHT. MILLED OR UNFINISHED SURFACES WILL REQUIRE A 40(H) : 1(V) TEMPORARY RAMP PER ARTICLE 406.08 OF THE STANDARD SPECIFICATIONS.
- SWITCH W21-1110(FO)-48 "WORKERS" SIGN FROM STAGE 1 TO W20-1101(FO)-48 "FLAGGER" SIGN.
- TO BE COMPLETED CONCURRENTLY WITH US ROUTE 30 OVERLAY / STAGE 3.
- MUNICIPAL DRIVE STAGE 3 TRAFFIC CONTROL AND PROTECTION IS FOR FINAL RESURFACING AND PAVEMENT MARKINGS TO BE COMPLETED WITH U.S. ROUTE 30 STAGE 3 TRAFFIC CONTROL AND PROTECTION.

REVISIONS	
NAME	DATE

ILLINOIS DEPARTMENT OF TRANSPORTATION

**U.S. ROUTE 30 AND MUNICIPAL DRIVE TRAFFIC CONTROL AND STAGING PLAN**

SCALE: 1" = 60'  
DATE: 02/07/08  
DRAWN BY:  
CHECKED BY: WBR

Path: H:\SDSR\PROJ\63023\63023-06\DWG\FINAL\ENG\CONTRACT\B\B-SC0546-TRC1E