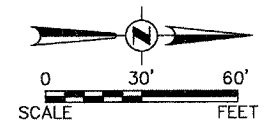


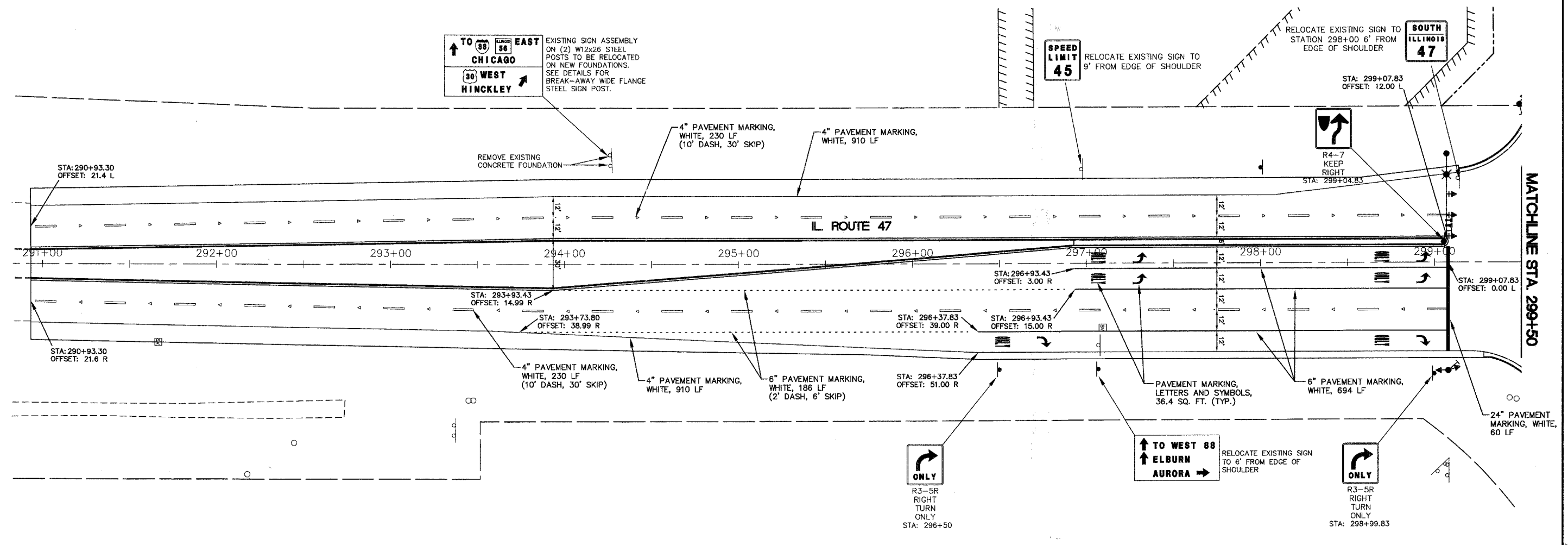


F.A. RTE.	SECTION	COUNTY	TOTAL SHEETS	SHEET NO.
N/A	D6-00017-00-PV	KANE	232	113
STA. 290+93		TO STA. 299+50		
FED. ROAD DIST. NO.	ILLINOIS	FED. AID PROJECT		



DATE	BY

DATE	BY



REVISIONS	
NAME	DATE

ILLINOIS DEPARTMENT OF TRANSPORTATION

STRIPING AND SIGNAGE PLAN

ILLINOIS ROUTE 47

SCALE: 1" = 30'
DATE: 02/07/08

DRAWN BY: KKP
CHECKED BY: WBR