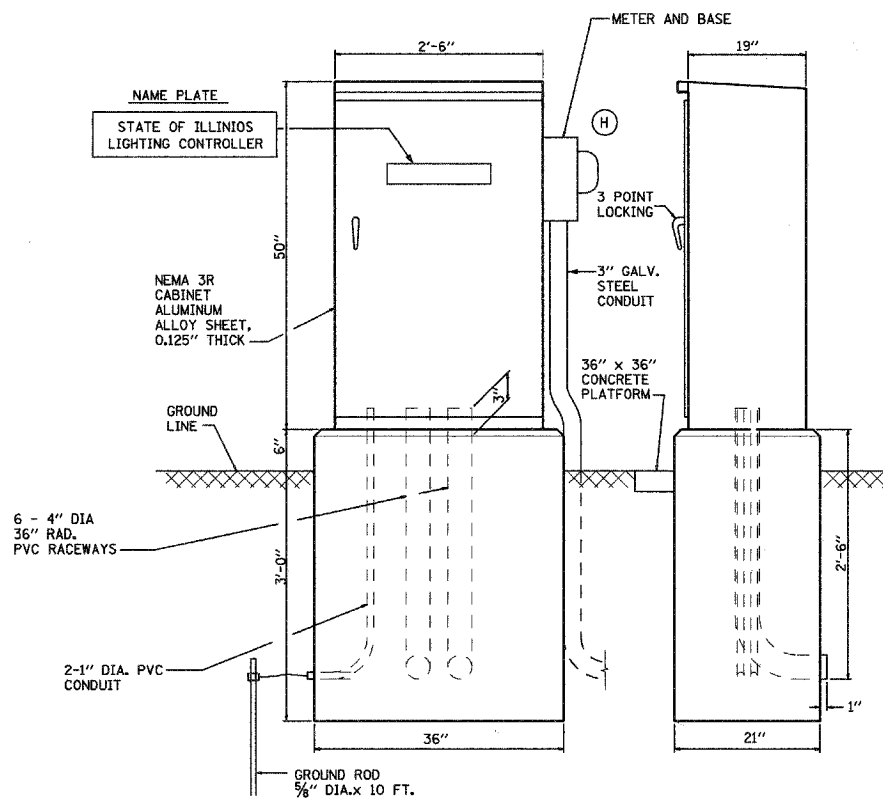
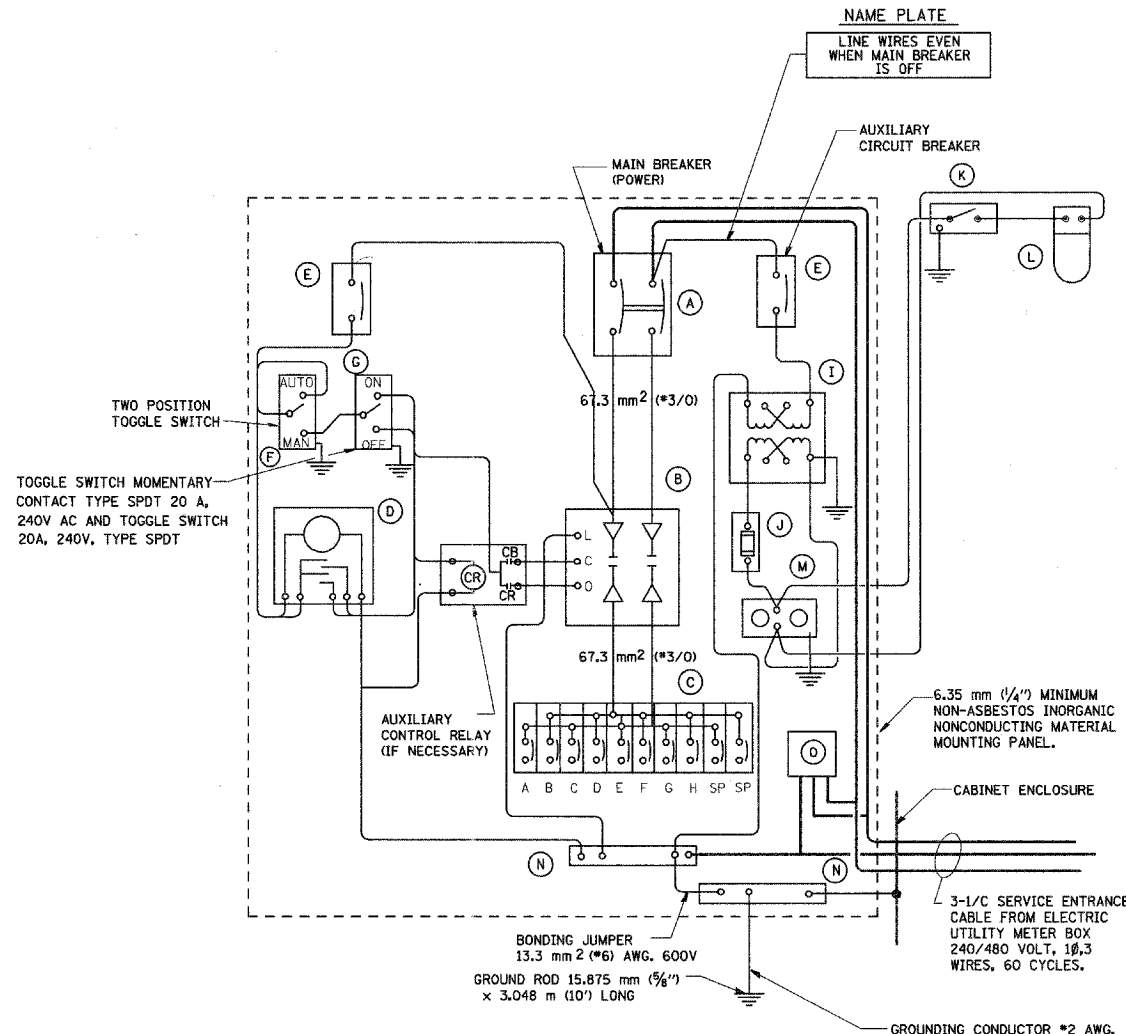


F.A. RTE.	SECTION	COUNTY	TOTAL SHEETS	SHEET NO.
06-00017-00-PV		KANE	232	151



**CONTROL CABINET - CONSOLE TYPE**



**PANEL WIRING DIAGRAM**

200 AMPERE, 240/480 VOLT, 1 PHASE, 3 WIRE

DEVICE SCHEDULE		
ITEM	QUANT.	DESCRIPTION
(A)	1	CIRCUIT BREAKER, MOLDED CASE, THERMAL MAGNETIC, 2-POLE, 600V. A.C., 225A. FRAME, 200A. NON-INTERCHANGABLE TRIP, BOLT-ON TYPE; INTERRUPTING CAPACITY OF NOT LESS THAN 22,000 RMS SYMMETRICAL AMPERES AT 480V.
(B)	1	LIGHTING CONTACTOR (REMOTE CONTROL SWITCH) MECHANICALLY HELD, ASCO OR EQUAL 920, MOUNTED ON SUB PANEL 200A., 2P., 600V. WITH 240V. COIL.
(C)	1	PANELBOARD (INTERIOR ONLY) 480/240V. SINGLE PHASE WITH 200A. COPPER MAINS AND TEN IP-50A BOLT-ON BRANCH BREAKERS EACH RATED 277V. WITH INTERRUPTING CAPACITY OF NOT LESS THAN 14,000 RMS SYMMETRICAL AMPERES AT 277V.
(D)	1	TIME CLOCK: 240V, 60 HZ, MICROPROCESSOR BASED 2-CHANNEL CONTROLLER WITH ASTRONOMIC FUNCTIONS. RATED FOR -30 DEGREES C. TO +70 DEGREES C.
(E)	2	CIRCUIT BREAKER, MOLDED CASE, THERMAL MAGNETIC, 1-POLE, 277V., BOLT-ON TYPE, 15 AMP WITH AN INTERRUPTING RATING OF NOT LESS THAN 14,000 RMS SYMMETRICAL AMPERES AT 277V.
(F)	1	CONTROL SWITCH, MOMENTARY CONTACT, SPDT, 20A., 240V.
(G)	1	CONTROL SWITCH, TOGGLE TYPE, SPDT, 20A., 240V. PREMIUM SPEC. GRADE
(H)	1	SOCKET FOR ELECTRIC UTILITY CO. METER.
(I)	1	STEP DOWN TRANSFORMER 240x480/120x240V, 1.5KVA.
(J)	1	FUSE HOLDER 250V, 15A. FUSE
(K)	1	MICRO SWITCH, 20A (MOUNT WITH ACTUATOR TO SWITCH WHEN DOOR OPENED)
(L)	1	60 WATT, 120V LIGHT FIXTURE, VAPORTIGHT, WITH GLOBE AND MOUNTING BOX.
(M)	1	GFI RECEPTACLE, 120V., 15A., PREMIUM SPEC. GRADE. NEMA REFERENCE 5-15R IN WEATHER-PROOF BOX WITH FLAP-TYPE COVER.
(N)	2	COPPER GROUND AND NEUTRAL BUS 1/4"x1"x12\"/>
(O)	1	SURGE ARRESTOR, 600 V

**NOTES**

- ALL DIMENSIONS ARE IN INCHES (MILLIMETERS) UNLESS OTHERWISE SHOWN.
- FOUNDATION SIZE SHALL BE COORDINATED WITH CABINET SIZE AND MFR.
- IN FRONT OF CONTROL CABINET DOOR, REMOVE VEGETATION AND 2" (50.8 mm) TOP SOIL, LEVEL AREA AND ON TOP, PLACE LENGTH WISE PARALLEL TO CONTROL CABINET, A CONCRETE PAD 36" (914.4 mm) x 60" (1524 mm) x 4" (101 mm) MIN. SIZE, THE COST OF LABOR AND MATERIALS ARE INCLUDED IN THE COST OF THE CONTROLLER.
- DOOR SHALL BE CONSTRUCTION FROM SAME TYPE OF MATERIAL AND THICKNESS AS CABINET.
- DOOR SHALL BE EQUIPPED WITH THREE POINT LATCHING MECHANISM WITH NYLON ROLLERS AT TOP THE BOTTOM.
- DOOR HINGE SHALL BE A HEAVY GAUGE CONTINUOUS HINGE WITH A 1/4" (16.35 mm) DIA. STAINLESS STEEL HINGE PIN.
- ALL EXTERNAL HARDWARE SHALL BE STAINLESS STEEL.
- CONTROL WIRING TO #12 AWG, 600V, TYPE "SIS" GRAY SWITCH BOARD WIRE, STRANDED COPPER.
- METER BOX SHALL BE MOUNTED ON THE SIDE OF CONTROL CABINET, NEAR TO THE SERVICE POLE.
- CABINETS SHALL BE PRIMED AND PAINTED AS SPECIFIED.
- THE HEADS OF CONNECTORS SCREWS SHALL BE PAINTED WHITE FOR NEUTRAL BAR CONNECTION AND GREEN FOR GROUND BAR CONNECTORS.
- ALL WIRING WITHIN THE CABINET SHALL BE COLOR CODED AS INDICATED.  
R = RED    BL = BLUE    W = WHITE  
B = BLACK    Y = YELLOW    G = GREEN
- PROVIDE SEALING GROMMETS FOR ALL OPEN WIRING EXTENDED FROM DEVICES IN BOXES OR CABINET WITHIN THE CONTROL CABINET.
- ALL WIRING SHALL BE NEATLY DRESSED AND SUPPORTED.
- THE CONTROLLER SHALL BE CONSTRUCTED TO U.L. STD. 508 AND BEAR THE U.L. LABEL "ENCLOSED INDUSTRIAL CONTROL PANEL".
- 12" (304.8) x 16" (406.4 mm) STAINLESS STEEL EXTERIOR NAMEPLATE SHALL BE ENGRAVED TO "STATE OF ILLINOIS LIGHTING CONTROLS" UNLESS OTHERWISE SPECIFIED.



EXCEL 847-543-9138

212 TIMBERCREST DRIVE  
SCHAUMBURG, ILLINOIS  
60193-1572

ILLINOIS DEPARTMENT OF TRANSPORTATION  
VILLAGE OF SUGAR GROVE, KANE COUNTY  
INTERSECTION: GALENA BOULEVARD WITH  
ILLINOIS ROUTE 47  
**LIGHTING CONTROLLER, CONSOLE TYPE  
200 AMP, 240/480 VOLT, 1 PHASE, 3 WIRE**

SCALE: \_\_\_\_\_  
DATE: 4-20-08

DRAWN BY: HKO  
CHECKED BY: JS

REV 06-10-08  
REV 06-06-08