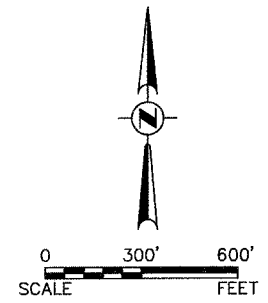


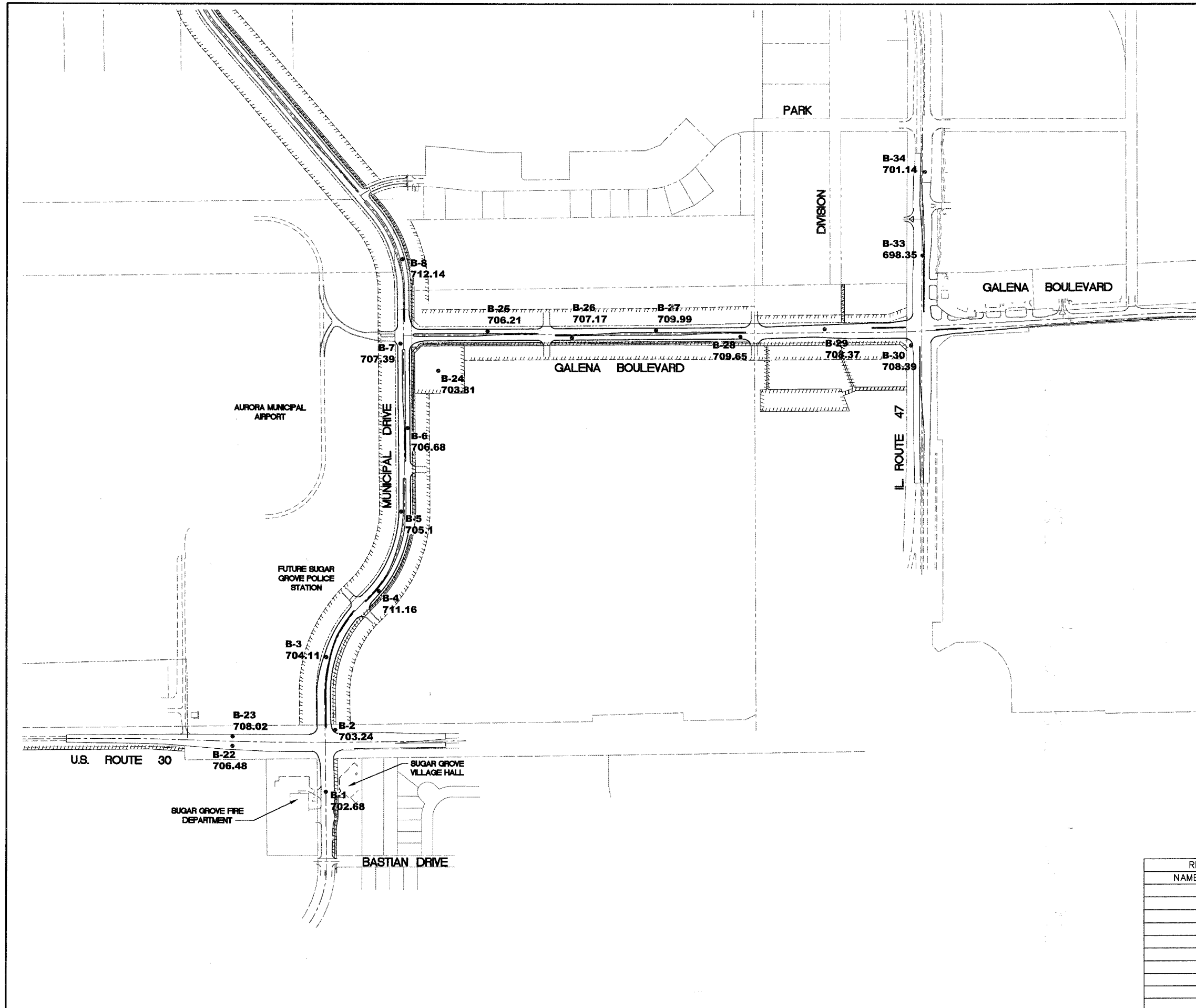
Engineering Enterprises, Inc.

F.A. RTE.	SECTION	COUNTY	TOTAL SHEETS	SHEET NO.
N/A	06-00017-00-PV	KANE	232	169
STA.		TO STA.		
FED. ROAD DIST. NO. _		ILLINOIS	FED. AID PROJECT	



PLAN	SURVEYED	BY	DATE
	PLOTTED		
	NOTE BOOK		
	NO.		

PROFILE	SURVEYED	BY	DATE
	PLOTTED		
	NOTE BOOK		
	NO.		



REVISIONS	
NAME	DATE

ILLINOIS DEPARTMENT OF TRANSPORTATION

SOIL BORING PLAN

SCALE: 1" = 300'
DATE: 02/07/08

DRAWN BY: KKP
CHECKED BY: WBR