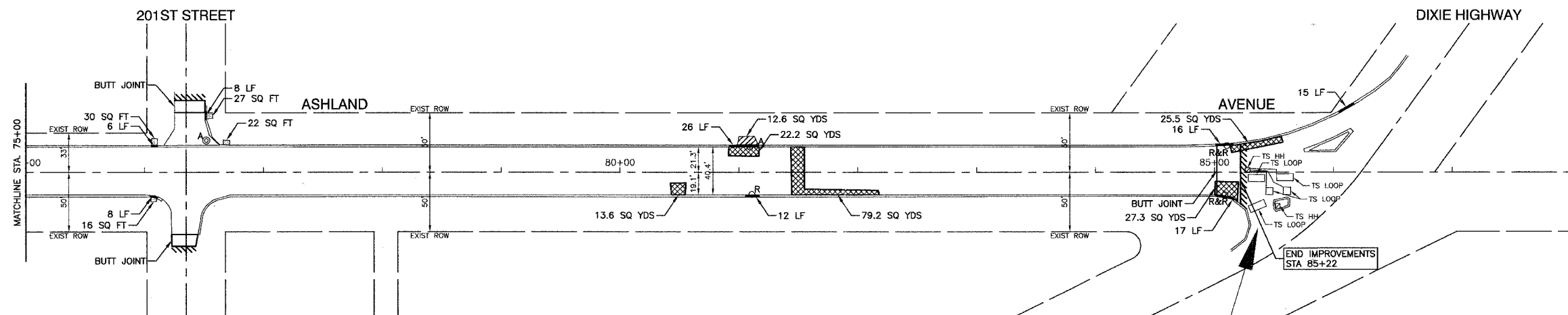
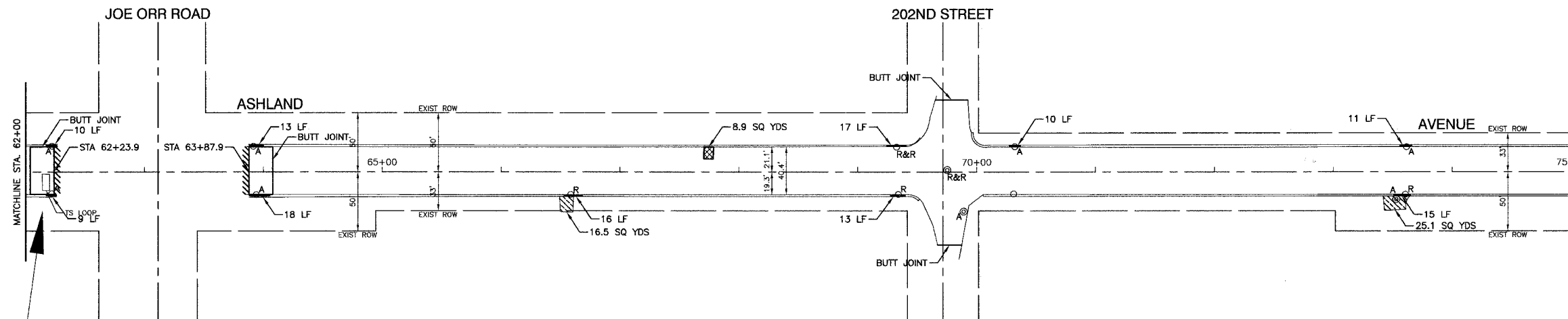


SECTION 17, TOWNSHIP 35, RANGE 14  
SECTION 18, TOWNSHIP 35, RANGE 14

F. A. S. NO.	SECTION	COUNTY	TOTAL SHEETS	SHEET NO.
2858	08-00222-00-RS	COOK	018	006
STA. 62+00	TO STA. END IMPROVEMENT			
FED. ROAD DIST. NO.	LANDS	FED. RD PROJECT		

CONTRACT #63045



**NOTE:**  
LIMIT OF CONSTRUCTION ON ALL SIDE STREETS IS THE RADIUS RETURN PLUS 10' BUTT JOINT

**LEGEND**

- HMA PAVEMENT REPAIR
- HMA DRIVEWAY REMOVAL AND REPLACEMENT
- CONCRETE DRIVEWAY REMOVAL AND REPLACEMENT
- CONCRETE SIDEWALK REMOVAL AND REPLACEMENT
- BUTT JOINTS
- CURB REMOVAL
- A** STRUCTURE TO BE ADJUSTED
- R** STRUCTURE TO BE RECONSTRUCTED
- R&R** STRUCTURE TO BE REMOVED AND REPLACED
- DETECTOR LOOP

REVISIONS	
NAME	DATE

**ILLINOIS DEPARTMENT OF TRANSPORTATION**

**ASHLAND AVENUE  
STREET RESURFACING  
PAVEMENT PLAN**

SCALE: VERT. NA  
HORIZ. 1"=50'

DATE: 05/07/08

DRAWN BY: RG  
CHECKED BY: RES