

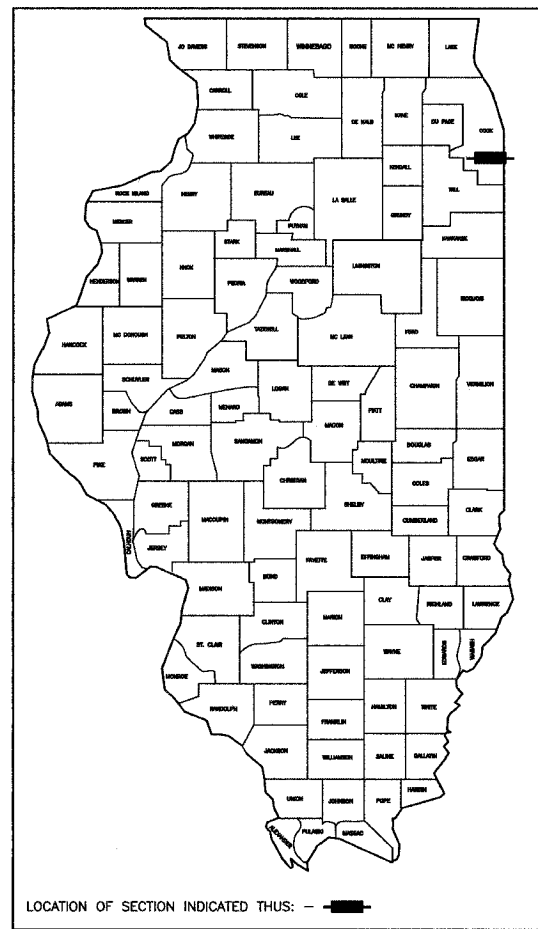
F. A. U. NO.	SECTION	COUNTY	TOTAL SHEETS	SHEET NO.
1601	08-00115-00-RS	COOK	19	01
STA.		TO STA.		
FED. ROAD DIST. NO. 1	ILLINOIS	FED. AID PROJECT		

CONTRACT #63046

STATE OF ILLINOIS
DEPARTMENT OF TRANSPORTATION
DIVISION OF HIGHWAYS

**PLANS FOR PROPOSED
FEDERAL AID HIGHWAY**

FAU 1601 / 144TH STREET
HALSTED STREET (FAU 3730) TO INDIANA AVENUE (FAU 2906)
LOCAL AGENCY PAVEMENT PRESERVATION
STREET RESURFACING
PROJECT: M-8003(968)
SECTION NO.: 08-00115-00-RS
JOB NO.: C-91-333-08
VILLAGE OF RIVERDALE
COOK COUNTY



STATE OF ILLINOIS
DEPARTMENT OF TRANSPORTATION
DIVISION OF HIGHWAYS

APPROVED April 23, 2008
Zenovia A. Evans MAYOR, VILLAGE OF RIVERDALE

PASSED MAY 22, 2008
Christophe Holt REGION ONE ENGINEER OF LOCAL ROADS & STREETS

RELEASED FOR
BID BASED ON
LIMITED REVIEW MAY 22, 2008
Diane M. O'Keefe DIRECTOR OF HIGHWAYS, REGION ONE ENGINEER

PRINTED BY THE AUTHORITY OF
THE STATE OF ILLINOIS

PREPARED BY OR UNDER THE
DIRECT SUPERVISION OF:
J.M. [Signature]
5/6/08

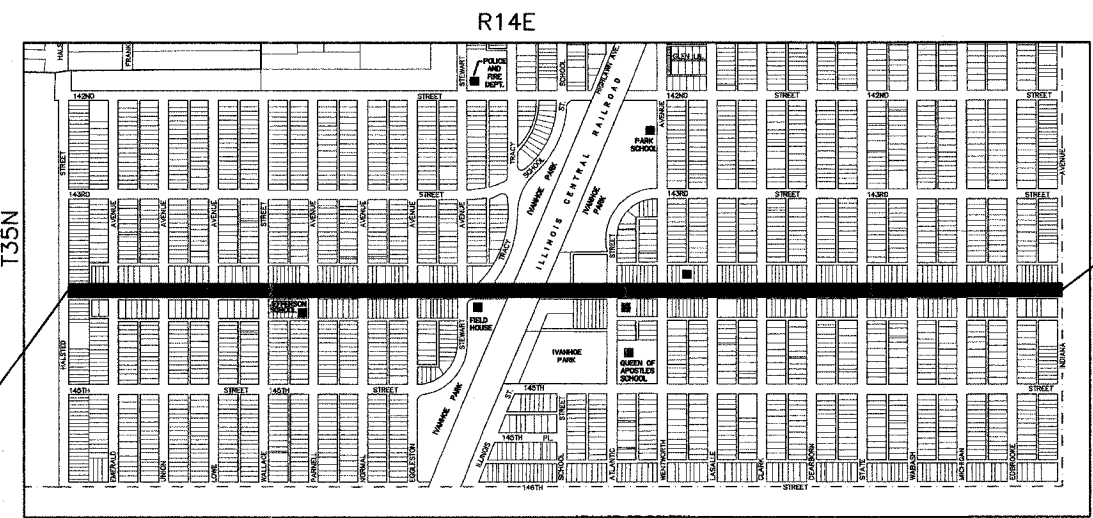
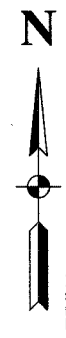
62-51002
REGISTERED
PROFESSIONAL
ENGINEER
STATE OF ILLINOIS
LICENSE EXPIRES: 11/30/09

INDEX OF SHEETS

- 1 COVER SHEET, INDEX OF SHEETS, LOCATION MAP
INDEX OF STATE STANDARDS
- 2 SUMMARY OF QUANTITIES & GENERAL NOTES
- 3 TYPICAL CROSS SECTION
- 4-6 PAVEMENT PLAN
- 7-9 STRIPING PLAN
- 10-19 DISTRICT 1 STANDARD DETAILS

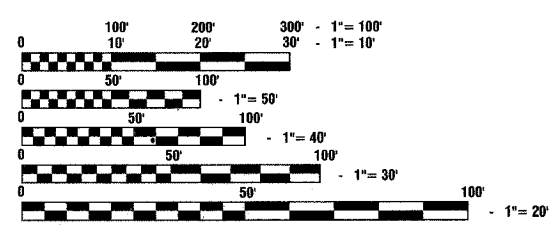
STATE STANDARDS

- 000001-05 STANDARD STANDARDS, ABBREVIATIONS AND PATTERNS
- 280001-04 TEMPORARY EROSION CONTROL SYSTEMS
- 424001-05 CURB RAMPS FOR SIDEWALK
- 442201-03 CLASS C AND D PATCHES
- 606001-03 CONCRETE CURB AND COMBINATION CONCRETE CURB & GUTTER
- 701601-05 URBAN LANE CLOSURE, MULTILANE, 1W OR 2W
WITH NONTRAVERSABLE MEDIAN
- 701701-05 URBAN LANE CLOSURE, MULTILANE INTERSECTION
- 701801-03 LANE CLOSURE, MULTILANE, 1W OR 2W, CROSSWALK
OR SIDEWALK CLOSURE,
- 701901 TRAFFIC CONTROL DEVICES
- 780001-01 TYPICAL PAVEMENT MARKINGS
- 886001 DETECTOR LOOP INSTALLATIONS
- 886006 TYPICAL LAYOUT FOR DETECTION LOOPS



IMPROVEMENT ENDS
144TH STREET
STATION 65+82

IMPROVEMENT BEGINS
144TH STREET
STATION 0+31



FULL SIZE PLANS HAVE BEEN PREPARED USING STANDARD
ENGINEERING SCALES, REDUCED SIZED PLANS WILL NOT
CONFORM TO STANDARD SCALES, IN MAKING MEASUREMENTS
ON REDUCED PLANS, THE ABOVE SCALES MAY BE USED.

J. U. L. I. E.
JOINT UTILITY LOCATION INFORMATION FOR EXCAVATION
1-800-892-0123

CONTRACT NO. 63046

LOCATION MAP

— INDICATES PROPOSED IMPROVEMENT

GROSS LENGTH= 6,551 FEET = 1.241 MILES
NET LENGTH= 6,551 FEET = 1.241 MILES

144TH STREET
ADT=12,000 (2007)
POSTED SPEED LIMIT = 30 MPH
DESIGN SPEED = 35 MPH

I.D.O.T. FIELD ENGINEER: MELCHOR MANGOBA 847-705-4408
CONSULTANTS: ROBINSON ENGINEERING, LTD. 708-331-6700
CONTACT ENGINEER: JEFF KOZA