

| FILE NO. | SECTION | COUNTY | TOTAL SHEETS | SHEET NO. |
|--------------------------------|----------------|--------|--------------|-----------|
| 1379 | 06-00050-00-RS | DUPAGE | 13 | 1 |
| ILLINOIS PROJECT: M-8003 (662) | | | | |
| CONTRACT NO.: 63047 | | | | |

| SHEET NO. | TITLE |
|-----------|---|
| 1 | COVER SHEET |
| 2 | SUMMARY & SCHEDULE OF QUANTITIES, LEGEND, DETAILS AND GENERAL NOTES |
| 3 | CURB & GUTTER REMOVAL & REPLACEMENT SCHEDULES |
| 4 | INLET DETAIL, TYPICAL CROSS SECTION, MIXTURE REQUIREMENTS |
| 5 | INLET DETAIL AND GUTTER DETAILS |
| 6 | FULLERTON AVENUE - STA 0+40 TO STA 13+25 |
| 7 | FULLERTON AVENUE - STA 13+25 TO STA 26+50 |
| 8 | FULLERTON AVENUE - STA 26+50 TO STA 39+60 |
| 9 | FULLERTON AVENUE - STA 39+60 TO STA 52+70 |
| 10 | IDOT TYPICAL PAVEMENT MARKINGS |
| 11 | IDOT TRAFFIC CONTROL AND PROTECTION AT TURN BAYS AND OTHER PROTECTION STANDARDS |
| 12 | IDOT BUTT JOINT AND BITUMINOUS TAPER DETAILS |
| 13 | IDOT PAVEMENT MARKING LETTERS & SYMBOLS FOR TRAFFIC STAGING |

STATE OF ILLINOIS
DEPARTMENT OF TRANSPORTATION
DIVISION OF HIGHWAYS
**PLANS FOR PROPOSED
FEDERAL AID HIGHWAY**
FAU 1379 (FULLERTON AVENUE) RESURFACING
SECTION: 06-00050-00-RS
GARY AVENUE TO SCHMALE ROAD (FAU 2561 TO FAU 2566)
PROJECT NO.: M-8003 (662)
VILLAGE OF CAROL STREAM
DUPAGE COUNTY
JOB NO.: C-91-437-06



LOCATION OF INDICATED SECTION THIS: - - -

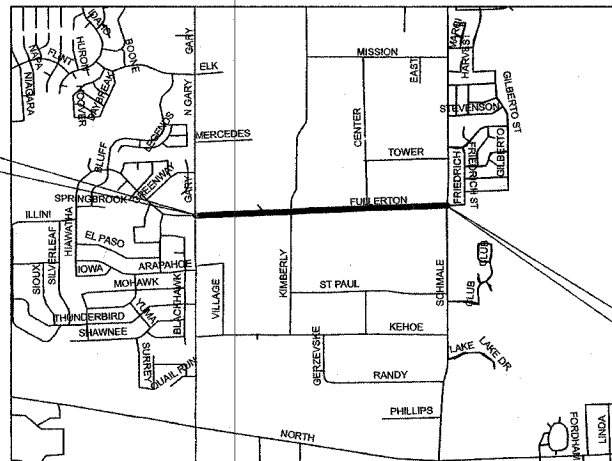
TOWNSHIP: 40 NORTH
RANGE: 10 EAST

CITY & TOWNSHIP = CAROL STREAM - BLOOMINGDALE TOWNSHIP

PROJECT LOCATION FULLERTON AVENUE BEGIN RESURFACING: STA. 0+40

DESIGN DESIGNATION
FULLERTON AVENUE
LOCAL COLLECTOR

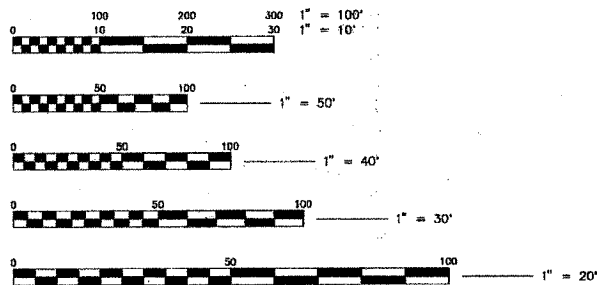
TRAFFIC DATA
FULLERTON AVENUE
POSTED OR DESIGN SPEED = 35 MPH
2005 ADT = 12,500



PROJECT LOCATION FULLERTON AVENUE END RESURFACING: STA. 53+10

LOCATION MAP

NET LENGTH OF PROJECT = 5270 LIN. FT. OR 0.998 MILES
GROSS LENGTH OF PROJECT = 5400 LIN. FT. OR 1.02 MILES



FULL SIZE PLANS HAVE BEEN PREPARED USING STANDARD ENGINEERING SCALES. REDUCED SIZED PLANS WILL NOT CONFORM TO STANDARD SCALES. IN MAKING MEASUREMENTS ON REDUCED SIZE PLANS, THE ABOVE SCALES SHALL BE USED.

CALL JULIE 1-800-892-0123
WITH THE FOLLOWING
COUNTY = DUPAGE
CITY & TOWNSHIP = CAROL STREAM - BLOOMINGDALE TOWNSHIP
SEC & 1/4 SEC NO. = SEC. 28 - E & W 1/4. SEC 29 - E & W 1/4
48 HOURS BEFORE YOU DIG
EXCLUDING SAT., SUN., & HOLIDAYS



ENGINEERING SERVICES
500 N. GARY AVENUE
60188
(630) 871 - 6220



William N. Cleveland exp 11/30/09

PROJECT MANAGER

| | |
|---|---|
| STATE OF ILLINOIS DEPARTMENT OF TRANSPORTATION DIVISION OF HIGHWAYS | |
| Approved | <i>June 5, 2008</i> <i>[Signature]</i> Local Agency Position Village Engineer |
| Passed | <i>JUNE 6, 2008</i> <i>[Signature]</i> District # Engineer of Local Roads & Streets Christopher Holt |
| Releasing for Bid Based on Limited Review | <i>JUNE 6, 2008</i> <i>[Signature]</i> Deputy Director of Highways, Region # Engineer Diane M. O'Keefe |

CONTRACT NO. 63047

FIELD ENGINEER - MARILIN SOLOMON 847-705-4407