

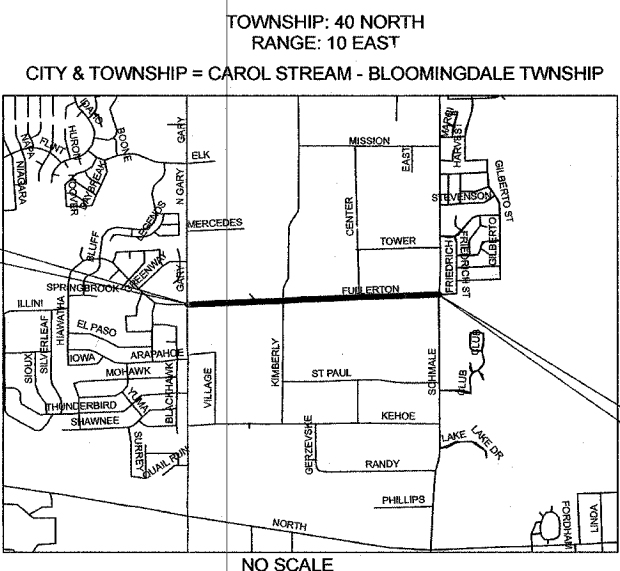
FILE NO.	SECTION	COUNTY	TOTAL SHEETS	SHEET NO.
1379	06-00050-00-RS	DUPAGE	13	1
ILLINOIS PROJECT: M-8003 (662)				
CONTRACT NO.: 63047				

SHEET NO.	TITLE
1	COVER SHEET
2	SUMMARY & SCHEDULE OF QUANTITIES, LEGEND, DETAILS AND GENERAL NOTES
3	CURB & GUTTER REMOVAL & REPLACEMENT SCHEDULES
4	INLET DETAIL, TYPICAL CROSS SECTION, MIXTURE REQUIREMENTS
5	INLET DETAIL AND GUTTER DETAILS
6	FULLERTON AVENUE - STA 0+40 TO STA 13+25
7	FULLERTON AVENUE - STA 13+25 TO STA 26+50
8	FULLERTON AVENUE - STA 26+50 TO STA 39+60
9	FULLERTON AVENUE - STA 39+60 TO STA 52+70
10	IDOT TYPICAL PAVEMENT MARKINGS
11	IDOT TRAFFIC CONTROL AND PROTECTION AT TURN BAYS AND OTHER PROTECTION STANDARDS
12	IDOT BUTT JOINT AND BITUMINOUS TAPER DETAILS
13	IDOT PAVEMENT MARKING LETTERS & SYMBOLS FOR TRAFFIC STAGING

STATE OF ILLINOIS
DEPARTMENT OF TRANSPORTATION
DIVISION OF HIGHWAYS
**PLANS FOR PROPOSED
FEDERAL AID HIGHWAY**
FAU 1379 (FULLERTON AVENUE) RESURFACING
SECTION: 06-00050-00-RS
GARY AVENUE TO SCHMALE ROAD (FAU 2561 TO FAU 2566)
PROJECT NO.: M-8003 (662)
VILLAGE OF CAROL STREAM
DUPAGE COUNTY
JOB NO.: C-91-437-06



LOCATION OF INDICATED SECTION THIS: - - -



PROJECT LOCATION FULLERTON AVENUE BEGIN RESURFACING: STA. 0+40

PROJECT LOCATION FULLERTON AVENUE END RESURFACING: STA. 53+10

DESIGN DESIGNATION
FULLERTON AVENUE
LOCAL COLLECTOR

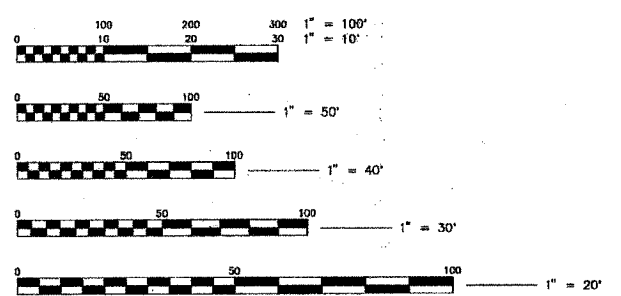
TRAFFIC DATA
FULLERTON AVENUE
POSTED OR DESIGN SPEED = 35 MPH
2005 ADT = 12,500

LOCATION MAP

NET LENGTH OF PROJECT = 5270 LIN. FT. OR 0.998 MILES
GROSS LENGTH OF PROJECT = 5400 LIN. FT. OR 1.02 MILES



ENGINEERING SERVICES
500 N. GARY AVENUE
60188
(630) 871 - 6220



FULL SIZE PLANS HAVE BEEN PREPARED USING STANDARD ENGINEERING SCALES. REDUCED SIZED PLANS WILL NOT CONFORM TO STANDARD SCALES. IN MAKING MEASUREMENTS ON REDUCED SIZE PLANS, THE ABOVE SCALES SHALL BE USED.

CALL JULIE 1-800-892-0123
WITH THE FOLLOWING
COUNTY = DUPAGE
CITY & TOWNSHIP = CAROL STREAM - BLOOMINGDALE TOWNSHIP
SEC & 1/4 SEC NO. = SEC. 28 - E & W 1/4. SEC 29 - E & W 1/4
48 HOURS BEFORE YOU DIG
EXCLUDING SAT., SUN., & HOLIDAYS

CONTRACT NO. 63047



William N. Cleveland exp 11/30/09

PROJECT MANAGER

STATE OF ILLINOIS DEPARTMENT OF TRANSPORTATION DIVISION OF HIGHWAYS	
Approved	<i>June 5, 2008</i> <i>[Signature]</i> Local Agency Position: Village Engineer
Passed	<i>JUNE 6, 2008</i> <i>[Signature]</i> District # Engineer of Local Roads & Streets
Releasing for Bid Based on Limited Review	<i>JUNE 6, 2008</i> <i>[Signature]</i> Deputy Director of Highways, Region # Engineer

FIELD ENGINEER - MARILIN SOLOMON 847-705-4407

GENERAL NOTES

THE CONTRACTOR SHALL PROTECT AND CAREFULLY PRESERVE ALL SECTION OR SUBSECTION MONUMENTS OR PROPERTY OR REFERENCE MARKERS UNTIL THE OWNER, HIS AGENT OR AN AUTHORIZED SURVEYOR HAS WITNESSED OR OTHERWISE REFERENCED THEIR LOCATIONS.

THE CONTRACTOR SHALL BE RESPONSIBLE FOR CONTACTING THE OWNERS OF ALL EXISTING UTILITIES SO THAT THE UTILITIES AND THEIR APPURTENANCES MAY BE LOCATED AND ADJUSTED OR MOVED, IF NECESSARY, PRIOR TO THE START OF CONSTRUCTION OPERATIONS. THE CONTRACTOR SHALL COOPERATE WITH ALL UTILITY OWNERS AS PROVIDED IN THE STANDARD SPECIFICATIONS.

THE CONTRACTOR SHALL BE RESPONSIBLE FOR THE PROTECTION OF ALL UNDERGROUND OR SURFACE UTILITIES EVEN THOUGH THEY MAY NOT BE SHOWN ON THE PLANS. ANY UTILITY THAT IS DAMAGED DURING CONSTRUCTION SHALL BE REPAIRED TO THE SATISFACTION OF THE ENGINEER OR THE OWNER OR REPLACED. THIS WORK SHALL BE AT THE CONTRACTOR'S EXPENSE.

ALL AGGREGATE USED ON THIS PROJECT SHALL BE CRUSHED GRAVEL OR CRUSHED STONE.

ALL SAW CUTTING SHALL BE INCLUDED IN THE UNIT COST OF THE ITEM INDICATED FOR REMOVAL.

ALL CONSTRUCTION PERSONNEL WILL BE REQUIRED TO WEAR A FLOURESCENT ORANGE VEST AT ALL TIMES WHILE ON THE CONSTRUCTION SITE. COMPLIANCE WITH THIS REQUIREMENT SHALL BE INCLUDED IN THE CONTRACT.

NO STREET CLOSURES WILL BE ALLOWED.

THE CONTRACTOR SHALL REPLACE ALL STREET SIGNS AND MAIL BOXES REMOVED DURING CONSTRUCTION AS NEAR AS POSSIBLE TO THEIR ORIGINAL LOCATION OR AS DETERMINED BY THE ENGINEER. THIS WORK SHALL BE INCLUDED IN THE CONTRACT.

ALL OPEN HOLES, BROKEN PAVEMENT AND TRENCHES RESULTING FROM STRUCTURE ADJUSTMENTS, CURB REPAIRS OR STORM SEWER WORK SHALL BE BACKFILLED TO GRADE BY THE END OF THE DAY.

BEFORE STARTING ANY EXCAVATION, THE CONTRACTOR SHALL CALL "JULIE" AT 800-892-0123 FOR FIELD LOCATIONS OF BURIED ELECTRIC, TELEPHONE AND GAS FACILITIES. (48 HOURS NOTIFICATION IS REQUIRED)

10 FEET TRANSITIONS SHALL BE USED TO MATCH PROPOSED CURB AND CUTTER AND MEDIAN ITEMS OF WORK TO EXISTING CURB & GUTTERS AND MEDIANS IN FIELD, UNLESS OTHERWISE SHOWN. THE TRANSITIONS SHALL BE PAID FOR AT THE CONTRACT UNIT PRICE FOR THE PROPOSED ITEMS OF WORK SPECIFIED.

THE CONTRACTOR SHALL COORDINATE CONSTRUCTION ACTIVITIES WITH THE UTILITY COMPANIES AND THE VILLAGE OF CAROL STREAM ENGINEERING SERVICES DEPARTMENT

BARRICADES: THE CONTRACTOR SHALL PROVIDE AND INSTALL TWO (2) WEIGHTED SANDBAGS ON EACH TYPE I OR TYPE II BARRICADE USED - ONE (1) WEIGHTED SANDBAG ACROSS EACH BOTTOM RAIL.

WHEN MILLED PAVEMENT IN OPEN TO TRAFFIC, THE MAXIMUM GRADE DIFFERENTIAL BETWEEN PASSES OF THE MILLING MACHINE SHALL NOT EXCEED 1 1/2 INCHES WHERE THE SPEED LIMIT IS 45 MPH OR LESS AND 1 INCH WHERE THE SPEED LIMIT IS GREATER THAN 45 MPH.

BUTT JOINTS WILL BE INSTALLED AT THE ENDS OF ALL RESURFACING (WHERE RESURFACING MEETS EXISTING PAVEMENT). IN ACCORDANCE WITH THE "BUTT JOINT AND BITUMINOUS TAPER DETAILS" SHEET INCLUDED IN THE PLANS, UNLESS OTHERWISE SPECIFIED. BUTT JOINTS ARE BEING INCLUDED IN THE COST OF REMOVAL

DRIVEWAYS SHALL REMAIN ACCESSIBLE DURING THE ENTIRE DURATION OF THE PROJECT.

ALL HOT-MIX ASPHALT MIXTURES SHALL BE QC/QA. HEAT SCARIFICATIONS AND ASPHALT MODIFIER SHALL BE QC/QA

THE CURB AND GUTTER REMOVAL AND REPLACEMENT AND PATCHING WILL NOT EXCEED THE QUANTITIES LISTED IN THE SUMMARY OF QUANTITIES

SUMMARY OF QUANTITIES

CODE NUMBER	PAY ITEM	UNIT	TOTAL QUANTITY (1000)
44000159	HOT-MIX ASPHALT SURFACE REMOVAL, 2 1/2 INCH	SY	20860
44301000	STRIP REFLECTIVE CRACK CONTROL TREATMENT, SYSTEM B	FT	7245
40600100	BITUMINOUS MATERIALS (PRIME COAT)	GAL	2086
40600300	AGGREGATE (PRIME COAT)	TON	21
40600635	LEVELING BINDER (MACHINE METHOD) N70	TON	877
40600982	HOT-MIX ASPHALT SURFACE REMOVAL - BUTT JOINT	SY	250
40603340	HOT-MIX ASPHALT SURFACE COURSE, MIX D, N70	TON	2337
44201711	CLASS D PATCHES TYPE IV, 5 INCH	SY	220
60262700	INLETS TO BE RECONSTRUCTED	EA	28
67100100	MOBILIZATION	LS	1
70102625	TRAFFIC CONTROL & PROTECTION, STANDARD 701606	LS	1
70102635	TRAFFIC CONTROL & PROTECTION, STANDARD 701701	LS	1
*78000100	THERMOPLASTIC PAVEMENT MARKING LETTERS & SYMBOLS	SF	600
44001700	COMBINATION CURB AND GUTTER REMOVAL AND REPLACEMENT	FT	2445
*78000200	THERMOPLASTIC PAVEMENT MARKING LINE, 4 INCH	FT	13070
*78000400	THERMOPLASTIC PAVEMENT MARKING LINE, 6 INCH	FT	1270
*78000600	THERMOPLASTIC PAVEMENT MARKING LINE, 12 INCH	FT	250
*78000650	THERMOPLASTIC PAVEMENT MARKING LINE, 24 INCH	FT	96
*88600600	DETECTOR LOOP REPLACEMENT	FT	750
Z0048665	RAILROAD PROTECTIVE LIABILITY INSURANCE	LS	1
Z0000600	ADJUSTING FRAMES FOR INLETS	EA	10

* INDICATES SPECIALTY ITEMS

STANDARD NO.	DESCRIPTION
000001-05	STANDARD SYMBOLS, ABBREVIATIONS AND PATTERNS
442201-01	CLASS C AND D PATCHES
606001-03	CONCRETE CURB TYPE B AND COMBINATION CONCRETE CURB AND GUTTER
701301-02	LANE CLOSURE, 2L, 2W, SHORT TIME OPERATIONS
701606-05	URBAN LANE CLOSURE MULTILANE, 2W WITH MOUNTABLE MEDIAN
701701-05	URBAN LANE CLOSURE, MULTILANE INTERSECTION
701901	TRAFFIC CONTROL DEVICES
780001-01	TYPICAL PAVEMENT MARKINGS
886001	DETECTOR LOOP INSTALLATIONS

INLET REPAIR SCHEDULE		
STATION	LOCATION	WORK TO BE DONE
2+15	LT	ADJUST
2+18	RT	ADJUST
5+66	LT	ADJUST
6+06	RT	ADJUST
10+03	LT	ADJUST
10+13	RT	ADJUST
12+84	LT	ADJUST
12+95	RT	ADJUST
20+50	RT	ADJUST
20+66	RT	ADJUST
20+73	RT	REPAIR
22+24	RT	REPAIR
22+24	LT	REPAIR
22+28	RT	REPAIR
22+28	LT	REPAIR
24+14	LT	REPAIR
24+20	RT	REPAIR
28+34	RT	REPAIR
28+34	LT	REPAIR
29+65	RT	REPAIR
29+70	LT	REPAIR
31+95	RT	REPAIR
31+95	LT	REPAIR
32+10	RT	REPAIR
32+10	LT	REPAIR
37+63	RT	REPAIR
37+63	LT	REPAIR
41+51	RT	REPAIR
41+51	LT	REPAIR
41+60	RT	REPAIR
41+60	LT	REPAIR
44+25	RT	REPAIR
44+25	LT	REPAIR
45+84	RT	REPAIR
45+84	LT	REPAIR
47+33	LT	REPAIR
51+80	RT	REPAIR
51+80	LT	REPAIR



Carol Stream
© 1996 Village of Carol Stream

ENGINEERING SERVICES
500 N. GARY AVENUE
60188
(630) 871 - 6220

NO.	DATE	DESCRIPTION
1	3/27/08	IDOT COMMENTS
2	4/22/08	IDOT COMMENTS
3	6/6/08	IDOT COMMENTS

PLAN SHEET DESIGNATION	
COVER	
G - GENERAL	
H - HAZARDOUS MATERIALS	
C - CIVIL	
L - LANDSCAPE	
S - STRUCTURAL	
A - ARCHITECTURAL	
I - INTERIORS	
Q - EQUIPMENT	
F - FIRE PROTECTION	
P - PLUMBING	
M - MECHANICAL	
E - ELECTRICAL	
T - TELECOMMUNICATIONS	
R - RESOURCE	

PROJECT NO.:	M-8003 (662)
DWG FILE:	FULLERTON AVENUE
SCALE:	N/A
DRAWING DATE:	1/10/2008
DESIGNED BY:	FC
DRAWN BY:	FC
CHECKED BY:	BC
PLOTTED BY:	MS

VILLAGE OF CAROL STREAM
ILLINOIS

FULLERTON AVENUE (LAPP)
PROJECT

SHEET TITLE

SUMMARY & SCHEDULE OF
QUANTITIES,
GENERAL NOTES



ENGINEERING SERVICES
500 N. GARY AVENUE
60188
(630) 871 - 6220

CURB AND GUTTER REMOVAL AND REPLACEMENT SCHEDULE				CURB AND GUTTER REMOVAL AND REPLACEMENT SCHEDULE				CURB AND GUTTER REMOVAL AND REPLACEMENT SCHEDULE				CURB AND GUTTER REMOVAL AND REPLACEMENT SCHEDULE			
STATION BEGIN	STATION END	LOCATION (NORTH SIDE)	LENGTH (FEET)	STATION BEGIN	STATION END	LOCATION (NORTH SIDE)	LENGTH (FEET)	STATION BEGIN	STATION END	LOCATION (SOUTH SIDE)	LENGTH (FEET)	STATION BEGIN	STATION END	LOCATION (SOUTH SIDE)	LENGTH (FEET)
0+75	0+85	LT	10	20+60	20+73	LT	13	0+43	0+50	RT	7	21+85	21+91	RT	6
1+100	1+07	LT	7	22+18	22+34	LT	16	1+09	1+13	RT	4	22+11	22+24	RT	13
1+19	1+23	LT	4	22+49	22+53	LT	4	1+21	1+30	RT	9	22+43	22+51	RT	8
1+39	1+43	LT	4	22+65	22+70	LT	5	1+39	1+43	RT	4	24+14	24+28	RT	14
1+79	1+83	LT	4	22+85	22+95	LT	10	1+70	1+74	RT	4	25+02	25+08	RT	6
1+95	1+99	LT	4	23+04	23+08	LT	4	1+87	1+93	RT	6	25+17	25+28	RT	11
2+11	2+25	LT	14	23+51	23+89	LT	38	2+00	2+04	RT	4	26+32	26+98	RT	66
2+41	2+46	LT	5	24+06	24+25	LT	19	2+11	2+25	RT	14	27+16	27+44	RT	28
3+09	3+13	LT	4	24+56	25+00	LT	44	2+33	2+37	RT	4	28+26	28+42	RT	16
3+31	3+36	LT	5	25+12	25+16	LT	4	2+41	2+46	RT	5	29+55	29+60	RT	5
4+29	4+33	LT	4	25+28	25+34	LT	6	2+60	2+64	RT	4	29+65	29+88	RT	23
4+79	4+83	LT	4	25+47	25+52	LT	5	2+96	3+02	RT	6	30+45	30+52	RT	7
4+96	5+03	LT	6	25+70	25+74	LT	4	3+08	3+13	RT	5	31+08	31+13	RT	5
5+75	5+79	LT	4	25+94	26+00	LT	6	3+24	3+28	RT	4	31+46	31+52	RT	6
5+95	6+01	LT	6	26+44	26+53	LT	9	3+39	3+43	RT	4	31+95	32+19	RT	24
6+56	6+80	LT	24	26+85	27+00	LT	15	3+53	3+57	RT	4	32+33	32+37	RT	4
7+05	7+09	LT	4	27+01	27+15	LT	14	3+79	3+82	RT	4	32+69	32+73	RT	4
7+41	7+51	LT	4	27+23	27+38	LT	15	3+87	3+92	RT	5	32+79	32+83	RT	4
7+68	7+75	LT	7	27+87	27+94	LT	7	4+02	4+06	RT	4	33+11	33+15	RT	4
7+82	7+96	LT	14	28+24	28+40	LT	16	4+14	4+18	RT	4	33+31	33+35	RT	4
8+03	8+12	LT	9	29+00	29+04	LT	4	4+48	4+52	RT	4	33+71	33+75	RT	4
8+20	8+36	LT	16	29+14	29+28	LT	14	4+79	4+83	RT	4	33+93	33+98	RT	5
8+40	8+49	LT	9	29+55	29+88	LT	33	4+96	5+17	RT	21	34+10	34+14	RT	4
8+51	8+55	LT	4	30+50	30+64	LT	14	5+21	5+46	RT	25	34+62	34+68	RT	6
8+80	8+84	LT	4	31+03	31+09	LT	6	5+51	5+64	RT	13	35+23	35+28	RT	5
9+41	9+63	LT	22	31+16	31+23	LT	7	5+70	5+74	RT	4	35+58	35+64	RT	6
9+72	7+79	LT	7	31+77	31+83	LT	6	5+75	6+00	RT	25	35+69	35+73	RT	4
10+27	10+31	LT	4	31+95	32+10	LT	5	6+40	6+45	RT	5	35+82	35+91	RT	9
10+38	10+42	LT	4	32+25	32+31	LT	6	6+56	6+61	RT	5	36+18	36+24	RT	6
10+51	10+61	LT	10	32+42	32+51	LT	9	6+66	6+71	RT	5	36+36	36+51	RT	15
10+70	10+74	LT	4	32+70	33+00	LT	30	7+01	7+26	RT	25	36+98	37+03	RT	5
10+86	10+92	LT	6	33+15	33+20	LT	5	7+57	7+61	RT	4	37+36	37+41	RT	5
11+02	11+06	LT	4	33+30	33+35	LT	5	8+62	8+70	RT	8	37+48	37+53	RT	5
11+62	11+67	LT	5	33+42	33+54	LT	12	9+56	9+63	RT	7	37+65	37+70	RT	5
12+44	12+49	LT	5	34+96	35+02	LT	6	9+92	10+04	RT	12	38+46	38+77	RT	31
12+72	12+76	LT	4	35+65	35+80	LT	15	11+11	11+23	RT	12	39+05	39+09	RT	4
12+82	13+08	LT	26	36+75	36+83	LT	8	12+14	12+52	RT	38	39+56	39+61	RT	5
13+19	13+47	LT	28	38+07	38+77	LT	70	12+76	12+82	RT	6	39+80	39+84	RT	4
13+60	13+78	LT	18	39+27	39+34	LT	7	12+82	13+08	RT	26	39+94	40+10	RT	16
14+15	14+21	LT	6	39+56	39+61	LT	5	13+19	13+47	RT	28	40+69	40+73	RT	4
14+44	14+48	LT	4	39+70	40+00	LT	30	13+60	13+78	RT	18	41+27	41+31	RT	4
14+59	14+65	LT	6	41+41	41+51	LT	10	13+86	13+94	RT	8	41+41	41+55	RT	14
14+90	14+94	LT	4	41+63	41+91	LT	28	14+06	14+10	RT	4	41+60	41+91	RT	31
15+03	15+08	LT	5	42+84	42+97	LT	13	14+69	14+79	RT	10	42+14	42+24	RT	10
15+17	15+25	LT	8	43+07	43+12	LT	5	15+00	15+06	RT	6	42+64	42+73	RT	9
15+56	15+60	LT	4	43+20	43+50	LT	30	15+38	15+44	RT	6	42+94	43+04	RT	10
16+26	16+31	LT	5	44+00	44+05	LT	5	16+22	16+26	RT	4	43+07	43+12	RT	5
16+45	16+52	LT	7	44+15	44+34	LT	19	16+34	16+61	RT	27	43+62	43+71	RT	9
17+27	17+36	LT	9	44+58	44+63	LT	5	18+10	18+14	RT	4	44+00	44+10	RT	10
17+74	17+78	LT	4	44+70	44+74	LT	4	18+26	18+31	RT	5	44+15	44+30	RT	15
17+89	17+94	LT	5	44+90	44+94	LT	4	18+49	18+54	RT	5	44+46	44+50	RT	4
18+60	18+64	LT	4	45+15	45+19	LT	4	18+60	18+76	RT	16	47+25	47+41	RT	16
18+76	18+87	LT	11	45+75	45+88	LT	13	18+82	18+87	RT	5	47+90	48+01	RT	11
19+00	19+05	LT	5	46+17	46+23	LT	6	19+00	19+10	RT	10	48+20	48+24	RT	4
19+17	19+24	LT	7	47+28	47+41	LT	13	19+50	19+58	RT	8	48+30	48+34	RT	4
19+40	19+51	LT	11	47+90	48+01	LT	11	20+25	20+42	RT	17	48+70	48+76	RT	6
19+60	19+73	LT	13	48+10	48+25	LT	15	20+50	20+80	RT	30	48+88	48+93	RT	5
20+25	20+42	LT	17	48+40	48+47	LT	7	20+66	20+87	RT	21	49+10	49+18	RT	8
				52+11	52+18	LT	7	20+83	2+89	RT	6	51+72	51+88	RT	16
								21+19	21+48	RT	29	52+10	52+14	RT	4
								21+65	21+69	RT	4	52+19	52+40	RT	21

--	--	--	--	--	--	--	--	--	--	--	--	--	--	--	--	--	--	--	--	--

PLAN SHEET DESIGNATION

- COVER
- G - GENERAL
- H - HAZARDOUS MATERIALS
- C - CIVIL
- L - LANDSCAPE
- S - STRUCTURAL
- A - ARCHITECTURAL
- I - INTERIORS
- Q - EQUIPMENT
- F - FIRE PROTECTION
- P - PLUMBING
- M - MECHANICAL
- E - ELECTRICAL
- T - TELECOMMUNICATIONS
- R - RESOURCE

PROJECT NO.:	M-8003 (652)
DWG FILE:	FULLERTON AVENUE
SCALE:	N/A
DRAWING DATE:	1/10/2008
DESIGNED BY:	FC
DRAWN BY:	FC
CHECKED BY:	BC
PLOTTED BY:	MS

VILLAGE OF CAROL STREAM
ILLINOIS

FULLERTON AVENUE (LAPP)
PROJECT

SHEET TITLE

CURB AND GUTTER
REMOVAL AND REPLACEMENT
SCHEDULE



ENGINEERING SERVICES
500 N. GARY AVENUE
60188
(630) 871 - 6220

ABBREVIATIONS

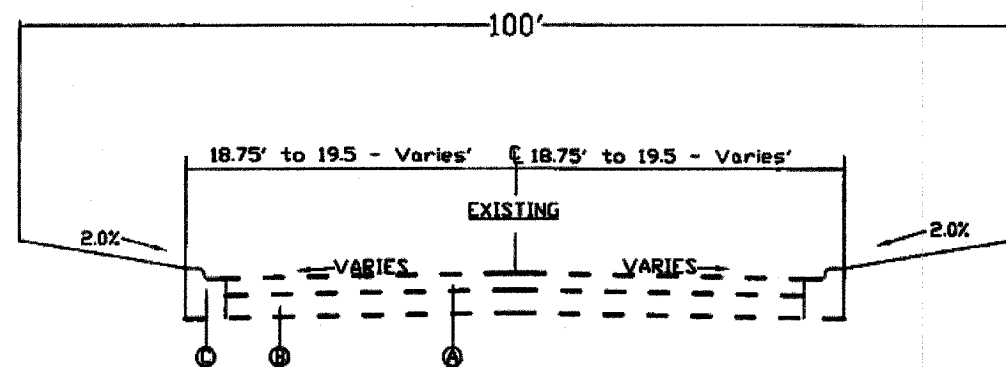
GR	GRAVEL
CI	CAST IRON
DI	DUCTILE IRON
CL EL	CENTERLINE ELEVATION
P	POINT
G	GUTTER
C	CURB
BC	BACK OF CURB
EP	EDGE OF PAVEMENT
TF	TOP OF FRAME
TC	TOP OF CURB OR CONCRETE
CP	SURVEY CONTROL POINT
R	STRUCTURE TO BE RECONSTRUCTED
A	STRUCTURE TO BE ADJUSTED

SA	SA	SANITARY SEWER OR SERVICE	○ GAS	GAS SERVICE VALVE
ST	ST	STORM SEWER OR SERVICE	○ CENTER LINE	CENTER LINE
W	W	WATER MAIN	----- EASEMENT	EASEMENT
WS	WS	WATER SERVICE	----- R.O.W.	RIGHT OF WAY (ROW)
FM	FM	FORCE MAIN	----- T	TELEPHONE CABLE
UD	UD	PIPE UNDERDRAIN	----- TD	TELEPHONE DUCT
PD	PD	PIPE DRAIN	□ TEL	TELEPHONE VAULT
⊙	⊙	MANHOLE	□ TR	TELEPHONE RISER
⊙	⊙	CATCH BASIN	□ TV	CABLE TELEVISION (BURIED)
⊙	⊙	INLET	□ CTV	CABLE T.V. RISER
⊙	⊙	DRYWELL	□ CTY	CABLE T.V. VAULT
⊙	⊙	END SECTION	----- E	UNDERGROUND ELECTRICAL
⊙	⊙	FIRE HYDRANT	□ EM	ELECTRIC METER
⊙	⊙	WATER VALVE W/ BOX AND COVER	□ ET	PAD MOUNTED TRANSFORMER
⊙	⊙	WATER VALVE VAULT	□ EY	ELECTRIC VAULT
⊙	⊙	CLEANOUT	□ JB	JUNCTION BOX
⊙	⊙	WATER SERVICE BOX	⊙	UTILITY POLE w/ GUY ANCHOR
⊙	⊙	WATER METER	⊙	UTILITY POLE w/ LIGHT
⊙	⊙	TO BE ABANDONED AND/OR REMOVED	⊙	LIGHT STANDARD
⊙	⊙	GAS LINE	⊙	MAIL BOX
⊙	⊙	GAS VALVE W/ BOX AND COVER	⊙	TRAFFIC SIGNAL POST W/ SIGNAL HEAD
⊙	⊙	GAS VALVE VAULT	⊙	HANDHOLE
⊙	⊙	GAS METER	⊙	PAVEMENT CORE LOCATION
⊙	⊙	GAS RISER	⊙	RIGHT OF WAY
⊙	⊙	CURB & GUTTER		

PROPOSED

	BITUMINOUS SURFACE REMOVAL - BUTT JOINT
	CLASS D PATCHES, TYPE IV-5"
	COMBINATION CURB & GUTTER REMOVAL & REPLACEMENT

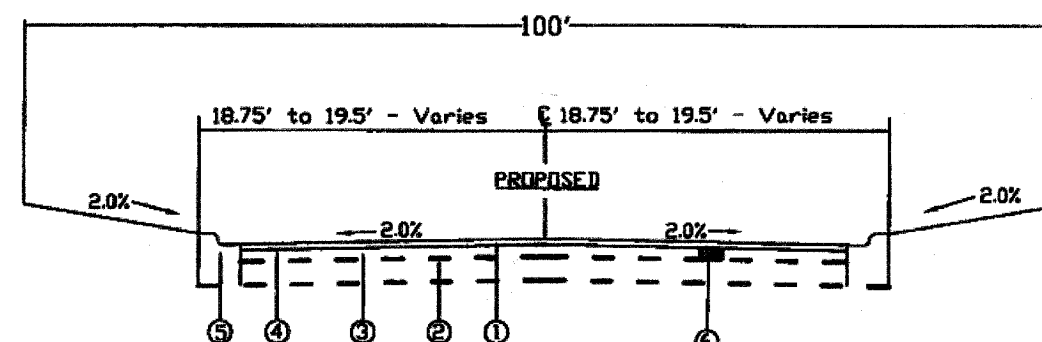
Existing R.O.W.



Existing Legend STA 0+40 - 52+70

Ⓐ	Hot-Mix Asphalt Surface Removal (2.5')
Ⓑ	Existing Bit.Agg.Matl.Base
Ⓒ	Existing Comb. Conc. Curb & Gutter TYPE B6.12

Proposed R.O.W.



Proposed Legend STA 0+40 - 52+70

①	Hot-Mix Asphalt Sur. Crse., Mix D, N70 (2.0')
②	Strip Reflective Crack Control Treatment
③	Leveling Binder (Machine Method) N70 3/4'
④	Bit.Material (Prime Coat)
⑤	Comb. Conc. Curb & Gutter, Type B6.12
⑥	CLASS D PATCH, TYPE IV, 5'

MIXTURE REQUIREMENTS		
MIXTURE USES	AC/PG	AIR VOIDS PERCENT
HOT-MIX ASPHALT SURFACE COURSE, MIX "D", N70	PG 64-22	4% @ 70 GYRATIONS
LEVELING BINDER (MACHINE METHOD)	PG 64-22	*4% @ 70 GYRATIONS
CLASS D PATCHES, TYPE IV, 5", IL-19mm	PG 64-22	*4% @ 70 GYRATIONS

THE UNIT WEIGHT USED TO CALCULATE ALL HOT-MIX ASPHALT SURFACE MIXTURES IS 112 LBS/YD²/IN

*WHEN RAP EXCEEDS 20%, THE NEW ASPHALT BINDER IN THE MIX SHALL BE PG58-22

NO.	DATE	DESCRIPTION
1	3/2/08	DOT COMMENTS
2	4/22/08	DOT COMMENTS
3	6/10/08	DOT COMMENTS

PLAN SHEET DESIGNATION

COVER
G - GENERAL
H - HAZARDOUS MATERIALS
C - CIVIL
L - LANDSCAPE
S - STRUCTURAL
A - ARCHITECTURAL
I - INTERIORS
Q - EQUIPMENT
F - FIRE PROTECTION
P - PLUMBING
M - MECHANICAL
E - ELECTRICAL
T - TELECOMMUNICATIONS
R - RESOURCE

PROJECT NO.:	M-8003 (682)
DWG FILE:	FULLERTON AVENUE
SCALE:	N/A
DRAWING DATE:	1/10/2008
DESIGNED BY:	FC
DRAWN BY:	FC
CHECKED BY:	BC
PLOTTED BY:	MS

VILLAGE OF CAROL STREAM
ILLINOIS

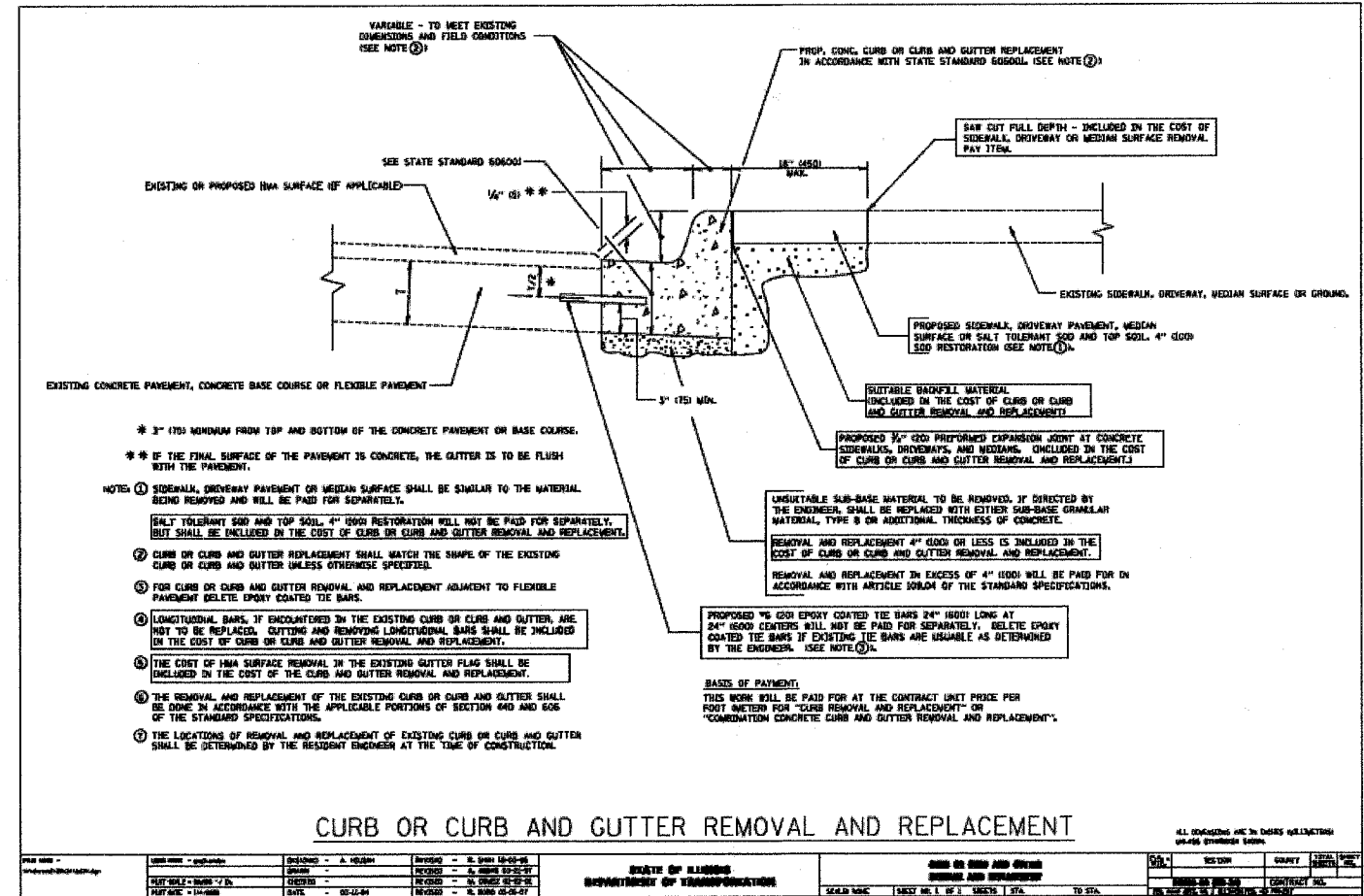
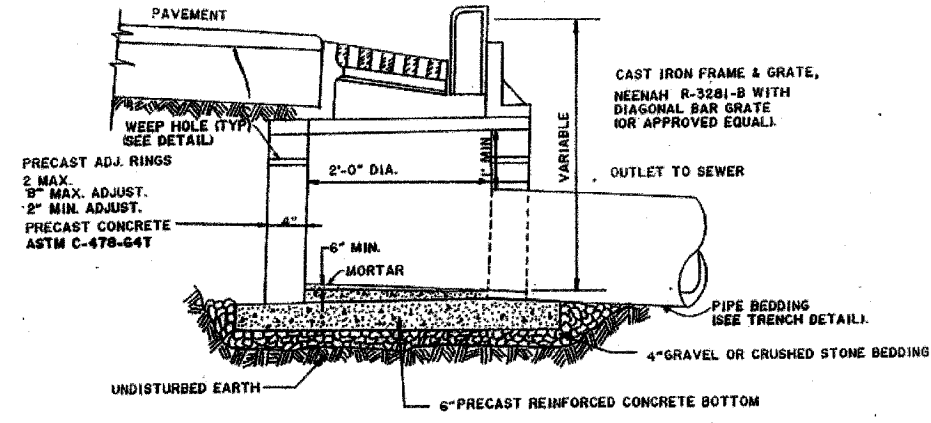
FULLERTON AVENUE (LAPP)
PROJECT

SHEET TITLE

LEGEND, ABBREVIATIONS,
TYPICAL CROSS-SECTION



ENGINEERING SERVICES
500 N. GARY AVENUE
60188
(630) 871 - 6220



NO.	DATE	DESCRIPTION
1	4/22/08	

PLAN SHEET DESIGNATION

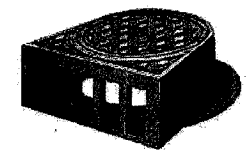
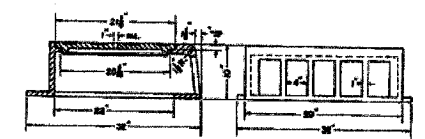
COVER
G - GENERAL
H - HAZARDOUS MATERIALS
C - CIVIL
L - LANDSCAPE
S - STRUCTURAL
A - ARCHITECTURAL
I - INTERIORS
Q - EQUIPMENT
F - FIRE PROTECTION
P - PLUMBING
M - MECHANICAL
E - ELECTRICAL
T - TELECOMMUNICATIONS
R - RESOURCE

INLET DETAIL

CURB OR CURB AND GUTTER REMOVAL AND REPLACEMENT

R-3305 Catch Basin Frame and Lid

Heavy Duty
For behind-the-curb construction.
Furnished standard with as-cast bearing surfaces.

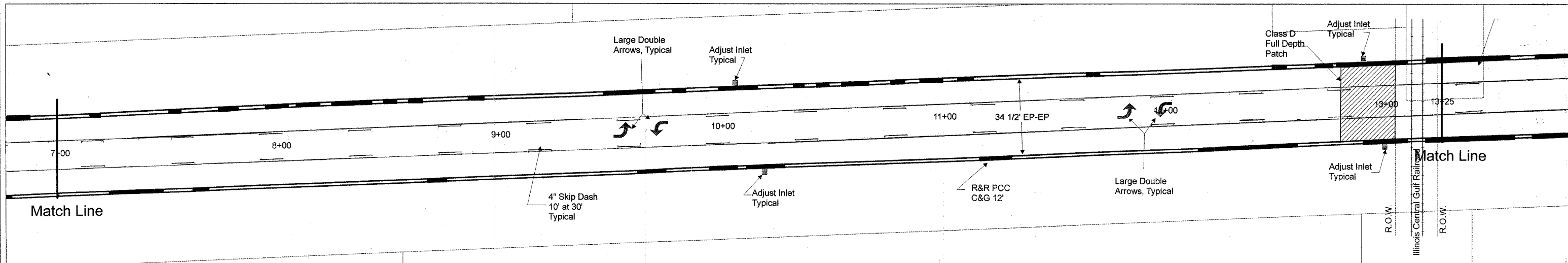
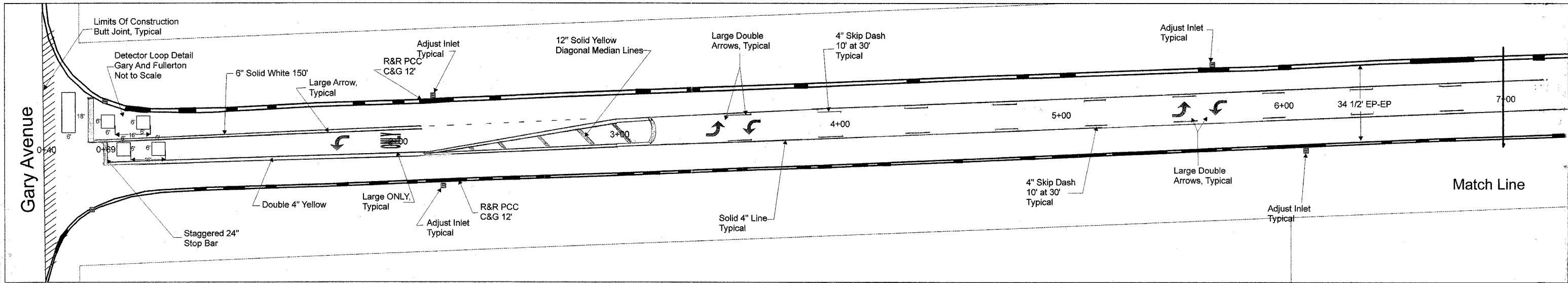


VILLAGE OF CAROL STREAM
ILLINOIS

FULLERTON AVENUE (LAPP)
PROJECT

SHEET TITLE

INLET AND CURB AND GUTTER DETAILS



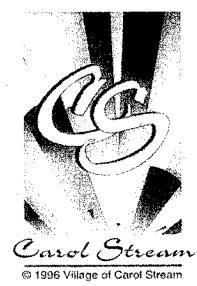
PROJECT NO.:	M-8003 (662)
DWG FILE:	FULLERTON AVENUE
SCALE:	1/20
DRAWING DATE:	1/10/08
DESIGNED BY:	FC
DRAWN BY:	FC
CHECKED BY:	BC
PLOTTED BY:	MS

VILLAGE OF CAROL STREAM
ILLINOIS

FULLERTON AVENUE
(LAPP) PROJECT

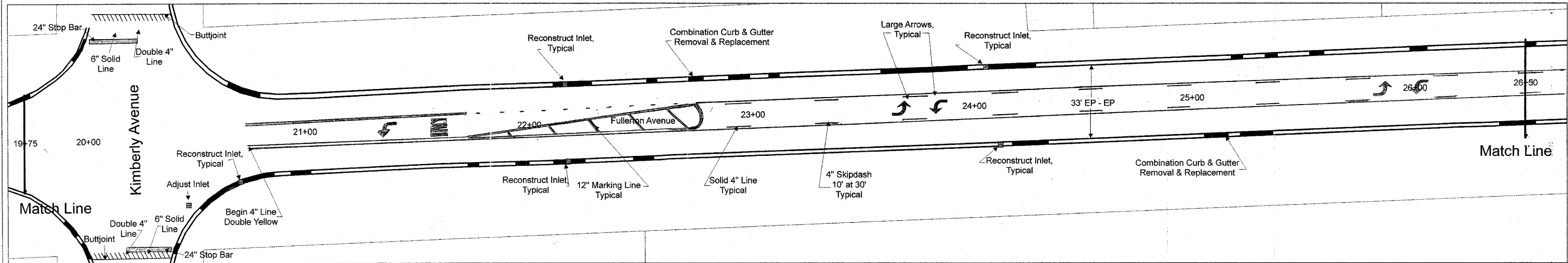
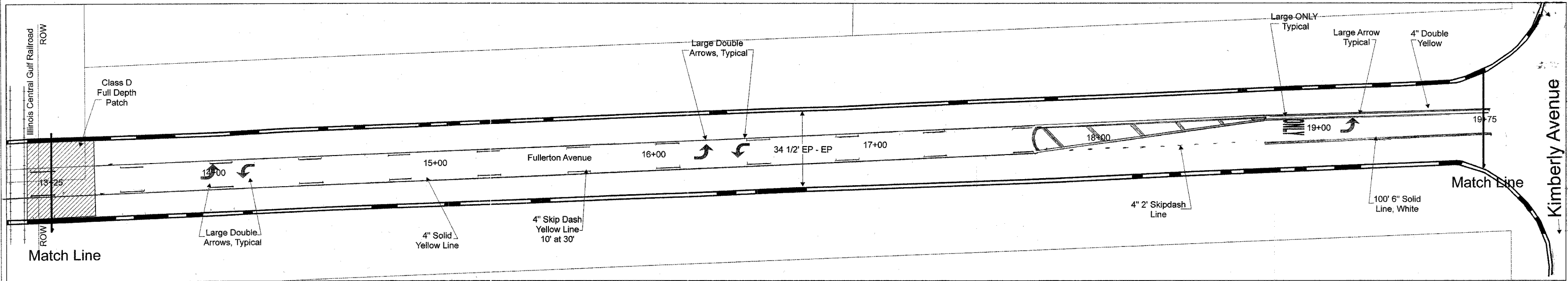
PLAN SHEET DESIGNATION	SHEET TITLE
COVER	STA 0+40 - STA 13+25
G - GENERAL	
H - HAZARDOUS MATERIALS	
C - CIVIL	
L - LANDSCAPE	
S - STRUCTURAL	
A - ARCHITECTURAL	
I - INTERIORS	
Q - EQUIPMENT	
F - FIRE PROTECTION	
P - PLUMBING	
M - MECHANICAL	
E - ELECTRICAL	
T - TELECOMMUNICATIONS	
R - RESOURCE	

REVISION	DATE



VILLAGE OF CAROL STREAM
ENGINEERING SERVICES
500 N. GARY AVENUE
60188
(630) 871 - 6220





PROJECT NO.:	M-8003 (662)
DWG FILE:	FULLERTON AVENUE
SCALE:	1/20
DRAWING DATE:	1/19/08
DESIGNED BY:	FC
DRAWN BY:	FC
CHECKED BY:	BC
PLOTTED BY:	MS

VILLAGE OF CAROL STREAM
ILLINOIS

FULLERTON AVENUE
(LAPP) PROJECT

SHEET TITLE

STA 13+25 - STA 26+50

7 OF 13

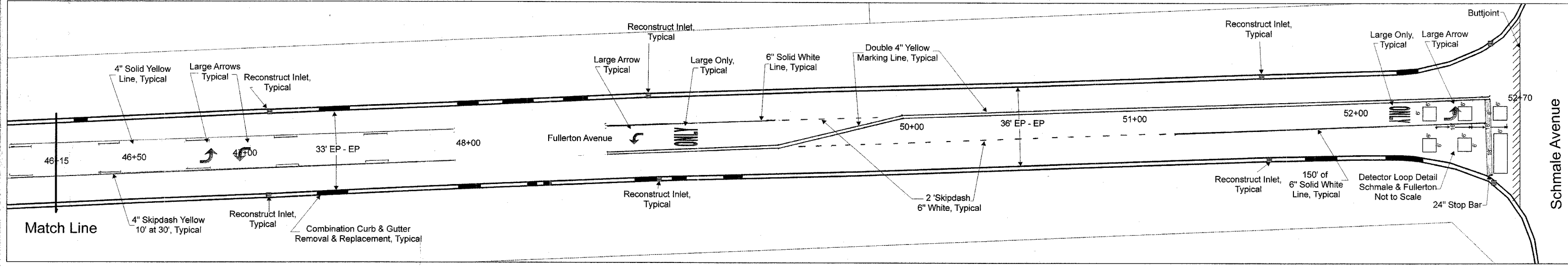
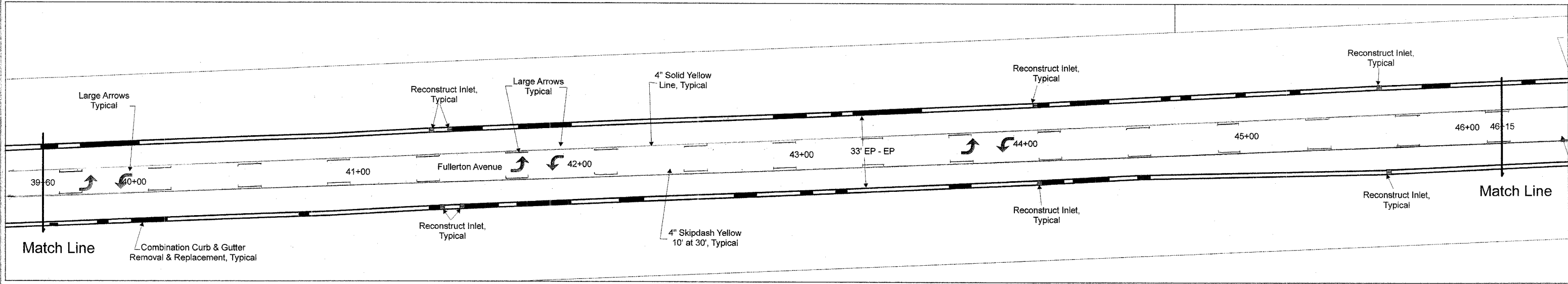


VILLAGE OF CAROL STREAM
ENGINEERING SERVICES
500 N. GARY AVENUE
60188
(630) 871 - 6220



REVISION	DATE

PLAN SHEET DESIGNATION	
COVER	
G - GENERAL	
H - HAZARDOUS MATERIALS	
C - CIVIL	
L - LANDSCAPE	
S - STRUCTURAL	
A - ARCHITECTURAL	
I - INTERIORS	
Q - EQUIPMENT	
F - FIRE PROTECTION	
P - PLUMBING	
M - MECHANICAL	
E - ELECTRICAL	
T - TELECOMMUNICATIONS	
R - RESOURCE	



PROJECT NO.:	M-8003 (682)
DWG FILE:	FULLERTON AVENUE
SCALE:	1/20
DRAWING DATE:	1/10/08
DESIGNED BY:	FC
DRAWN BY:	FC
CHECKED BY:	BC
PLOTTED BY:	MS

VILLAGE OF CAROL STREAM
ILLINOIS

FULLERTON AVENUE
(LAPP) PROJECT

SHEET TITLE
STA 39+60 - STA 52+70
9 OF 13



VILLAGE OF CAROL STREAM
ENGINEERING SERVICES
500 N. GARY AVENUE
60188
(630) 871 - 6220



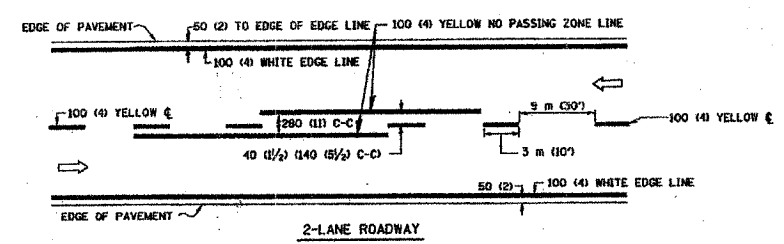
REVISION	DATE

PLAN SHEET DESIGNATION
COVER
G - GENERAL
H - HAZARDOUS MATERIALS
C - CIVIL
L - LANDSCAPE
S - STRUCTURAL
A - ARCHITECTURAL
I - INTERIORS
O - EQUIPMENT
F - FIRE PROTECTION
P - PLUMBING
M - MECHANICAL
E - ELECTRICAL
T - TELECOMMUNICATIONS
R - RESOURCE

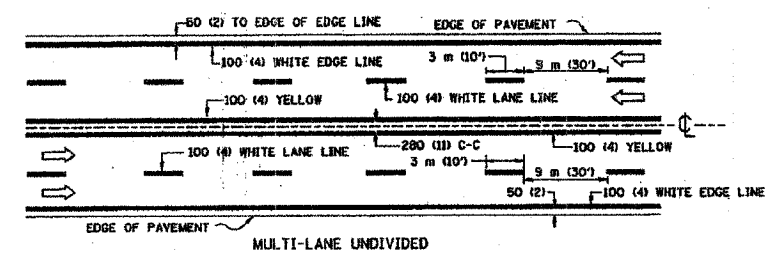


Carol Stream
© 1996 Village of Carol Stream

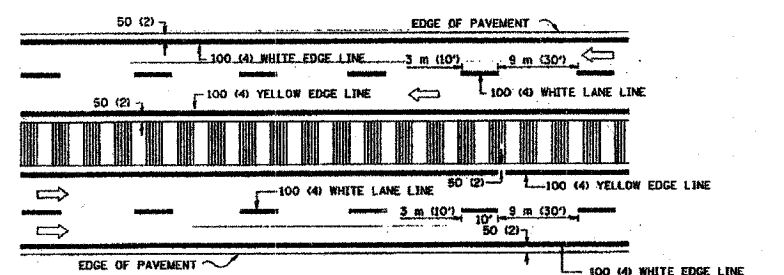
ENGINEERING SERVICES
500 N. GARY AVENUE
60188
(630) 871 - 6220



2-LANE ROADWAY



MULTI-LANE UNDIVIDED

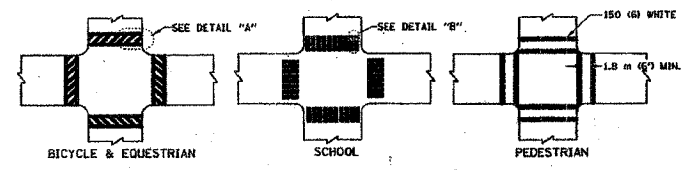


MULTI-LANE DIVIDED WITH MOUNTABLE MEDIAN

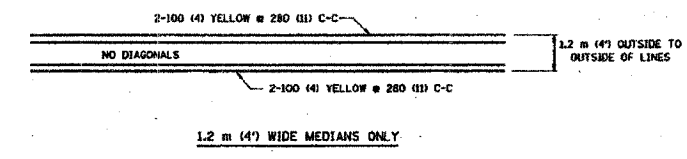
NOTE: MEDIANS WITH BARRIER CURBS DO NOT REQUIRE AN EDGE LINE

TYPICAL LANE AND EDGE LINE MARKING

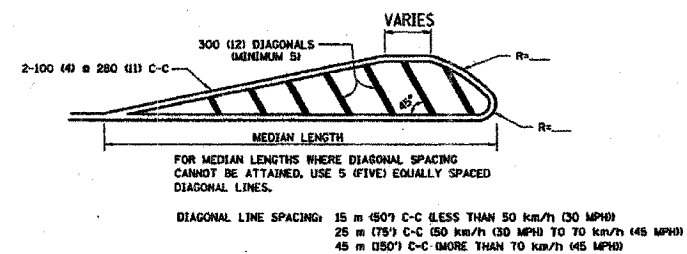
TYPICAL LANE AND EDGE LINE MARKING



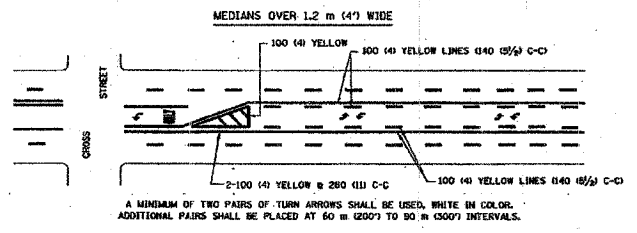
TYPICAL CROSSWALK MARKING



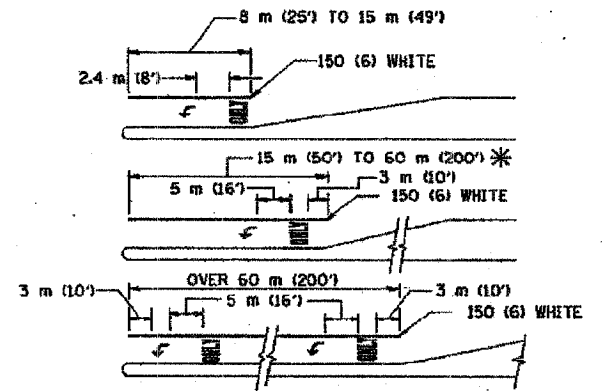
1.2 m (4') WIDE MEDIANS ONLY



DIAGONAL LINE SPACING: 15 m (50') C-C (LESS THAN 50 km/h (30 MPH))
25 m (75') C-C (50 km/h (30 MPH) TO 70 km/h (45 MPH))
45 m (150') C-C (MORE THAN 70 km/h (45 MPH))



MEDIAN WITH TWO-WAY LEFT TURN LANE
TYPICAL PAINTED MEDIAN MARKING

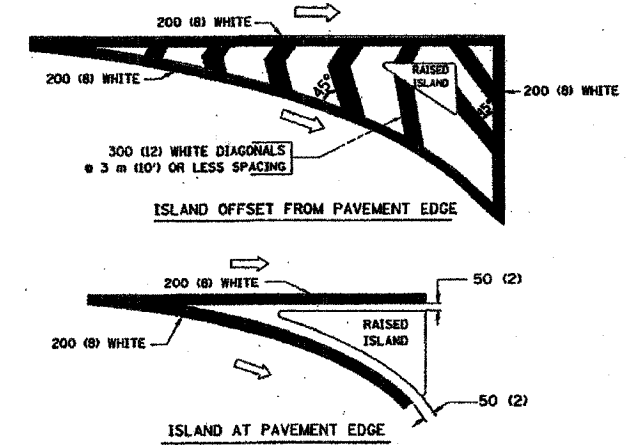


TYPICAL LEFT (OR RIGHT) TURN LANE

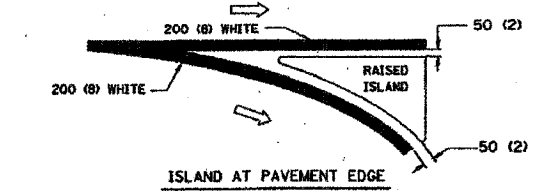
TYPICAL TURN LANE MARKING

FULL SIZE LETTERS 2.4 m (8') AND ARROWS SHALL BE USED.
AREA = 1.5 m² (15.6 SQ. FT.) ONLY AREA = 1.9 m² (20.8 SQ. FT.)

* TURN LANES IN EXCESS OF 120 m (400') IN LENGTH MAY HAVE AN ADDITIONAL SET OF ARROW - "ONLY" INSTALLED MIDWAY BETWEEN THE OTHER TWO SETS OF ARROW - "ONLY".



ISLAND OFFSET FROM PAVEMENT EDGE



ISLAND AT PAVEMENT EDGE

TYPICAL ISLAND MARKING

TYPE OF MARKING	WIDTH OF LINE	PATTERN	COLOR	SPACING / REMARKS
CENTERLINE ON 2 LANE PAVEMENT	100 (4)	SKIP-DASH	YELLOW	3 m (10') LINE WITH 9 m (30') SPACE
CENTERLINE ON MULTI-LANE UNDIVIDED PAVEMENT	2 @ 100 (4)	SOLID	YELLOW	280 (11) C-C
NO PASSING ZONE LINES FOR ONE DIRECTION FOR BOTH DIRECTIONS	100 (4) 2 @ 100 (4)	SOLID SOLID	YELLOW YELLOW	140 (45') C-C FROM SKIP-DASH CENTERLINE 280 (11) C-C OMIT SKIP-DASH CENTERLINE BETWEEN
LANE LINES	100 (4) 125 (4) ON FREEWAYS	SKIP-DASH SKIP-DASH	WHITE WHITE	3 m (10') LINE WITH 9 m (30') SPACE
DOTTED LINES (EXTENSIONS OF CENTER, LANE OR TURN LANE MARKINGS)	SAME AS LINE BEING EXTENDED	SKIP-DASH	SAME AS LINE BEING EXTENDED	600 (24) LINE WITH 1.8 m (6') SPACE
EDGE LINES	100 (4)	SOLID	YELLOW-LEFT WHITE-RIGHT	OUTLINE MOUNTABLE MEDIANS IN YELLOW; EDGE LINES ARE NOT USED NEXT TO BARRIER CURB
TURN LANE MARKINGS	150 (6) LINE; FULL SIZE LETTERS & SYMBOLS (2.4 m (8'))	SOLID	WHITE	SEE TYPICAL TURN LANE MARKING DETAIL
TWO WAY LEFT TURN MARKING	2 @ 100 (4) EACH DIRECTION 2.4 m (8') LEFT ARROW	SKIP-DASH AND SOLID IN PAIRS	YELLOW WHITE	3 m (10') LINE WITH 9 m (30') SPACE FOR SKIP-DASH; 140 (45') C-C BETWEEN SOLID LINE AND SKIP-DASH LINE SEE TYPICAL TWO-WAY LEFT TURN MARKING DETAIL
CROSSWALK LINES (PEDESTRIAN & LONGITUDINAL BARS (SCHOOL))	2 @ 150 (6) 300 (12) @ 45° 300 (12) @ 90°	SOLID SOLID SOLID	WHITE WHITE WHITE	NOT LESS THAN 1.8 m (6') APART 600 (24) APART 800 (24) APART SEE TYPICAL CROSSWALK MARKING DETAILS.
STOP LINES	600 (24)	SOLID	WHITE	PLACE 1.2 m (4') IN ADVANCE OF AND PARALLEL TO CROSSWALK, IF PRESENT. OTHERWISE, PLACE AT DESIRED STOPPING POINT, PARALLEL TO CROSSROAD CENTERLINE, WHERE POSSIBLE
PAINTED MEDIANS	2 @ 100 (4) WITH 300 (12) DIAGONALS @ 45° NO DIAGONALS USED FOR 1.2 m (4') WIDE MEDIANS	SOLID	YELLOW; TWO WAY TRAFFIC WHITE; ONE WAY TRAFFIC	280 (11) C-C FOR THE DOUBLE LINE SEE TYPICAL PAINTED MEDIAN MARKING.
GORE MARKING AND CHANNELIZING LINES	200 (8) WITH 300 (12) DIAGONALS @ 45°	SOLID	WHITE	DIAGONALS: 45 m (150') C-C (LESS THAN 50 km/h (30 MPH)) 6 m (20') C-C (50 km/h (30 MPH) TO 70 km/h (45 MPH)) 9 m (30') C-C (OVER 70 km/h (45 MPH))
RAILROAD CROSSING	600 (24) TRANSVERSE LINES; "RR" IS 1.8 m (6') LETTERS; 400 (16) LINE FOR "X"	SOLID	WHITE	SEE STATE STANDARD 780001 AREA OF: "R"=0.3m ² (3.6 SQ. FT.) EACH "X"=5.0 m ² (54.0 SQ. FT.)
SHOULDER DIAGONALS	300 (12) @ 45°	SOLID	WHITE - RIGHT YELLOW - LEFT	15 m (50') C-C (LESS THAN 50 km/h (30 MPH)) 25 m (75') C-C (50 km/h (30 MPH) TO 70 km/h (45 MPH)) 45 m (150') C-C (OVER 70 km/h (45 MPH))

FOR FURTHER DETAILS ON PAVEMENT MARKING REFER TO STANDARD SPECIFICATIONS FOR ROAD AND BRIDGE CONSTRUCTION AND STATE STANDARD 78000L

NO.	DATE	REVISIONS DESCRIPTION

PLAN SHEET DESIGNATION
COVER
G - GENERAL
H - HAZARDOUS MATERIALS
C - CIVIL
L - LANDSCAPE
S - STRUCTURAL
A - ARCHITECTURAL
I - INTERIORS
Q - EQUIPMENT
F - FIRE PROTECTION
P - PLUMBING
M - MECHANICAL
E - ELECTRICAL
T - TELECOMMUNICATIONS
R - RESOURCE

PROJECT NO.: M-8003 (662)
DWG FILE: FULLERTON AVENUE
SCALE: N/A
DRAWING DATE: 9/30/05
DESIGNED BY: FC
DRAWN BY: FC
CHECKED BY: BC
PLOTTED BY: MS

VILLAGE OF CAROL STREAM
ILLINOIS

FULLERTON AVENUE (LAPP)
PROJECT

SHEET TITLE

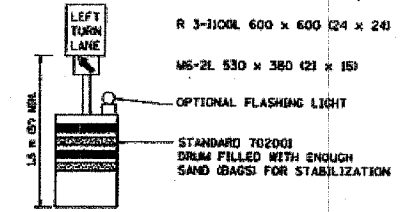
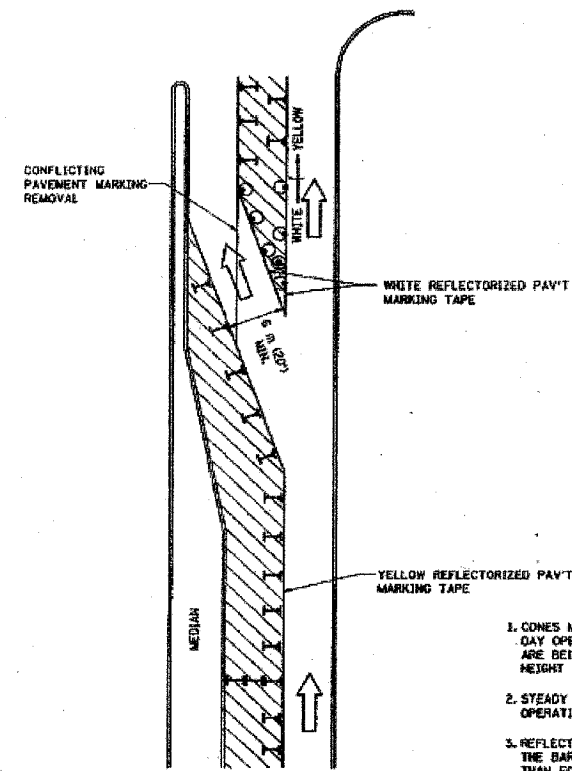
IDOT DISTRICT 1
TYPICAL PAVEMENT
MARKINGS

REVISIONS	NAME	DATE
1	EVERS	05-19-90
2	T. RAMMACHER	10-21-94
3	ALEX HOUSER	10-03-96
4	ALEX HOUSER	10-17-98
5	T. RAMMACHER	01-06-00

All dimensions are in millimeters (inches) unless otherwise shown.
ILLINOIS DEPARTMENT OF TRANSPORTATION
DISTRICT ONE
TYPICAL PAVEMENT
MARKINGS
SCALE: NONE
DATE: 3/25/02
DRAWN BY: CADD
CHECKED BY:



ENGINEERING SERVICES
 500 N. GARY AVENUE
 60188
 (630) 871 - 6220



GENERAL NOTES

- CONES MAY BE SUBSTITUTED FOR BARRICADES OR DRUMS AT HALF THE SPACING DURING DAY OPERATIONS. CONES SHALL BE A MINIMUM OF 710 (28") IN HEIGHT. WHEN CONES ARE BEING USED, THE "LEFT TURN LANE" SIGN MAY BE SKID MOUNTED AT A MINIMUM HEIGHT OF 1.5 m (5').
- STEADY BURNING LIGHTS WILL NOT BE REQUIRED ON BARRICADES OR DRUMS FOR DAY OPERATIONS. ALL LIGHTS SHALL BE MONODIRECTIONAL.
- REFLECTORIZED TEMPORARY PAVEMENT MARKING TAPE SHALL BE PLACED THROUGHOUT THE BARRICADED AREA OF EACH TURN BAY WHERE THE CLOSURE TIME IS GREATER THAN FOURTEEN DAYS.
- THIS APPLICATION ALSO APPLIES WHEN WORK IS BEING PERFORMED IN THE RIGHT LANE(S) AND THE RIGHT TURN BAY IS TO REMAIN OPEN. UNDER THIS CONDITION, "RIGHT TURN LANE" R3-100 600 x 600 (24 x 24) AND M6-2R 530 x 380 (21 x 15) SHALL BE USED.
- THESE CONTROLS SHALL SUPPLEMENT MAINLINE TRAFFIC CONTROL FOR LANE CLOSURES.
- LONGITUDINAL DIMENSIONS MAY BE ADJUSTED TO FIT FIELD CONDITIONS.
- FORM 67 725 IS REQUIRED.
- TRAFFIC CONTROL AND PROTECTION AT TURN BAYS (TO REMAIN OPEN TO TRAFFIC) SHALL BE INCLUDED IN THE COST SPECIFIED TRAFFIC CONTROL STANDARDS OR ITEMS.

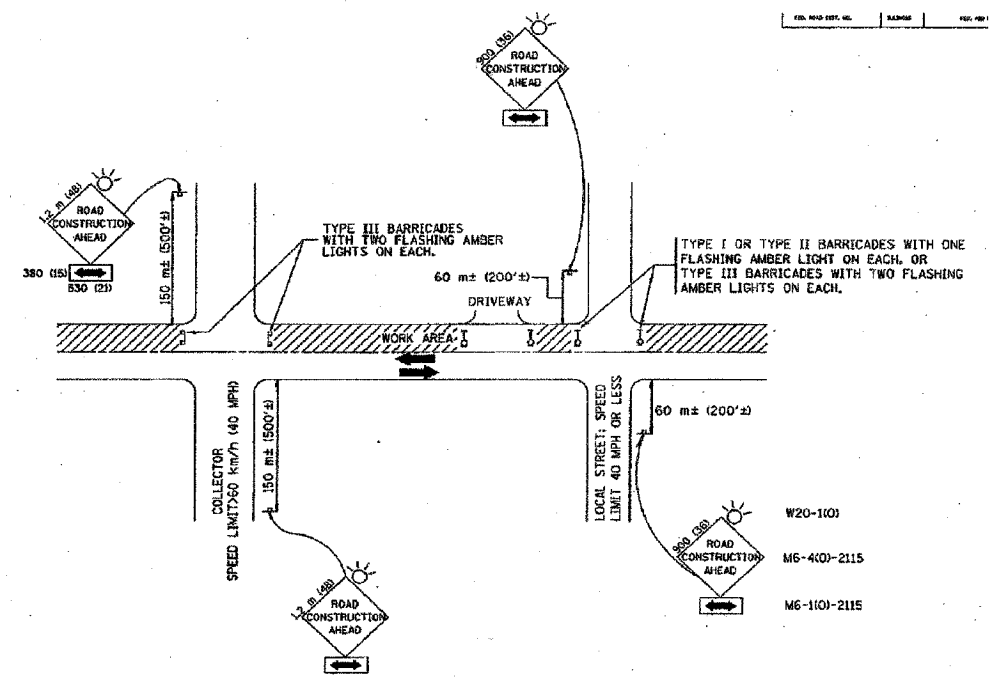
LEGEND

- WORK AREA
- LANE OPEN TO TRAFFIC
- TYPE I OR II BARRICADE WITH STEADY BURN LIGHT
- DRUM WITH STEADY BURN LIGHT
- DRUM WITH SIGN (WITH OPTIONAL FLASHING LIGHT) SEE DETAIL
- TYPE I OR II CHECK BARRICADE WITH FLASHING LIGHT

All dimensions are in millimeters (inches) unless otherwise shown.

ILLINOIS DEPARTMENT OF TRANSPORTATION
TRAFFIC CONTROL AND PROTECTION AT TURN BAYS (TO REMAIN OPEN TO TRAFFIC)
 SCALE: NONE
 DATE: 11/29/01
 DRAWN BY: LHA
 CHECKED BY: LHA

REVISIONS	NAME	DATE
1	T. RAMMACHER	08/08/94
2	A. HOUSEH	11/07/96
3	A. HOUSEH	10/17/96
4	T. RAMMACHER	01/06/00



TRAFFIC CONTROL AND PROTECTION FOR SIDE ROADS, INTERSECTIONS, AND DRIVEWAYS

NOTES:

- FOR NO LANE RESTRICTION ON THE SIDE ROAD OR DRIVEWAYS**
 - SIDE ROAD WITH A SPEED LIMIT OF 60 km/h (40 MPH) OR LESS AS SHOWN ON THE DRAWING AND AS DIRECTED BY THE ENGINEER:
 - ONE ROAD CONSTRUCTION AHEAD SIGN 900x900 (36x36) WITH A FLASHER AND FLAG MOUNTED ON IT APPROXIMATELY 60 m (200') IN ADVANCE OF THE MAIN ROUTE.
 - THE CLOSED PORTION OF THE MAIN ROUTE SHALL BE PROTECTED BY BLOCKING WITH TYPE I, TYPE II OR TYPE III BARRICADES, 1/3 OF THE CROSS SECTION OF THE CLOSED PORTION.
 - SIDE ROAD WITH A SPEED LIMIT GREATER THAN 60 km/h (40 MPH) AS SHOWN ON THE DRAWING AND AS DIRECTED BY THE ENGINEER:
 - ONE ROAD CONSTRUCTION AHEAD SIGN 1.2 m x 1.2 m (48x48) WITH A FLASHER MOUNTED ON IT APPROXIMATELY 150 m (500') IN ADVANCE OF THE MAIN ROUTE.
 - THE CLOSED PORTION OF THE MAIN ROUTE SHALL BE PROTECTED BY BLOCKING WITH TYPE III BARRICADES, 1/2 OF THE CROSS SECTION OF THE CLOSED PORTION.
 - WHEN THE SIDE ROAD LIES BETWEEN THE BEGINNING OF THE MAINLINE SIGNING AND THE WORK ZONE, A SINGLE HEADED ARROW (M6-1) SHALL BE USED IN LIEU OF THE DOUBLE HEADED ARROW (M6-4).
- FOR A LANE CLOSURE ON A SIDE ROAD OR DRIVEWAY.**

USE APPLICABLE PORTIONS OF THE TYPICAL APPLICATION OF TRAFFIC CONTROL DEVICES (STD. 70150L STD. 701606 OR THE APPROPRIATE STANDARD). THE SPACING OF SIGNS AND BARRICADES SHALL BE ADJUSTED FOR FIELD CONDITIONS AS DIRECTED BY THE ENGINEER. THE DIRECTIONAL ARROW SHALL BE COVERED OR REMOVED WHEN NO LONGER CONSISTENT WITH THE SIDE ROAD LANE CLOSURE.
 - ADVANCE WARNING SIGNS ARE TO BE OMITTED ON DRIVEWAY UNLESS OTHERWISE NOTED.
 - THE TRAFFIC CONTROL AND PROTECTION FOR SIDE ROADS, INTERSECTIONS, AND DRIVEWAYS SHALL BE INCIDENTAL TO THE COST OF SPECIFIED TRAFFIC CONTROL STANDARDS OR ITEMS.

All dimensions are in millimeters (inches) unless otherwise shown.

ILLINOIS DEPARTMENT OF TRANSPORTATION
TRAFFIC CONTROL AND PROTECTION FOR SIDE ROADS, INTERSECTIONS, AND DRIVEWAYS
 SCALE: NONE
 DATE: 3/26/02
 DRAWN BY: LHA
 CHECKED BY: LHA

REVISIONS	NAME	DATE
1	LHA	6/789
2	T. RAMMACHER	09/08/94
3	J. OBERLE	10/18/96
4	A. HOUSEH	03/06/96
5	A. HOUSEH	10/17/96
6	T. RAMMACHER	01/06/00

NO.	DATE	REVISIONS DESCRIPTION

PLAN SHEET DESIGNATION

- COVER
- G - GENERAL
- H - HAZARDOUS MATERIALS
- C - CIVIL
- L - LANDSCAPE
- S - STRUCTURAL
- A - ARCHITECTURAL
- I - INTERIORS
- Q - EQUIPMENT
- F - FIRE PROTECTION
- P - PLUMBING
- M - MECHANICAL
- E - ELECTRICAL
- T - TELECOMMUNICATIONS
- R - RESOURCE

PROJECT NO.:	M-8003 (682)
DWG FILE:	FULLERTON AVENUE
SCALE:	N/A
DRAWING DATE:	1/10/2008
DESIGNED BY:	FC
DRAWN BY:	FC
CHECKED BY:	BC
PLOTTED BY:	MS

VILLAGE OF CAROL STREAM
 ILLINOIS
 FULLERTON AVENUE (LAPP)
 PROJECT

SHEET TITLE
 IDOT TRAFFIC CONTROL AND PROTECTION AT TURN BAYS (TO REMAIN OPEN TO TRAFFIC) AND PROTECTION FOR SIDEROADS, INTERSECTIONS, AND DRIVEWAYS



Carol Stream
© 1996 Village of Carol Stream

ENGINEERING SERVICES
500 N. GARY AVENUE
60188
(630) 871 - 6220

NO.	DATE	DESCRIPTION	COMMENTS
1	9/27/08		

PLAN SHEET DESIGNATION

COVER
G - GENERAL
H - HAZARDOUS MATERIALS
C - CIVIL
L - LANDSCAPE
S - STRUCTURAL
A - ARCHITECTURAL
I - INTERIORS
Q - EQUIPMENT
F - FIRE PROTECTION
P - PLUMBING
M - MECHANICAL
E - ELECTRICAL
T - TELECOMMUNICATIONS
R - RESOURCE

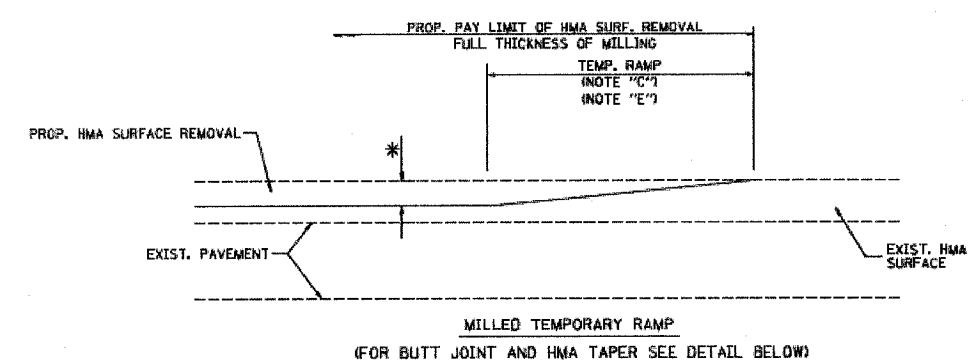
PROJECT NO.:	M-8003 (862)
DWG FILE:	FULLERTON AVENUE
SCALE:	N/A
DRAWING DATE:	1/10/2008
DESIGNED BY:	FC
DRAWN BY:	FC
CHECKED BY:	BC
PLOTTED BY:	MS

VILLAGE OF CAROL STREAM
ILLINOIS

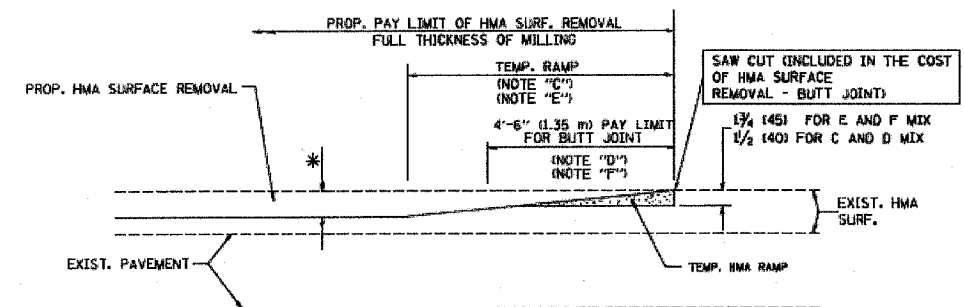
FULLERTON AVENUE (LAPP)
PROJECT

SHEET TITLE

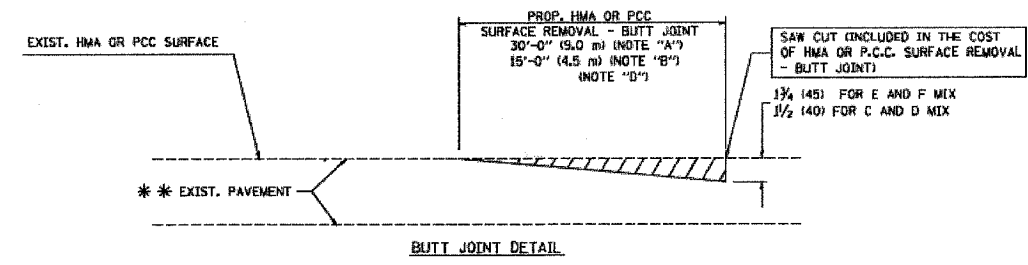
IDOT BUTT JOINT AND
BITUMINOUS TAPER
DETAILS



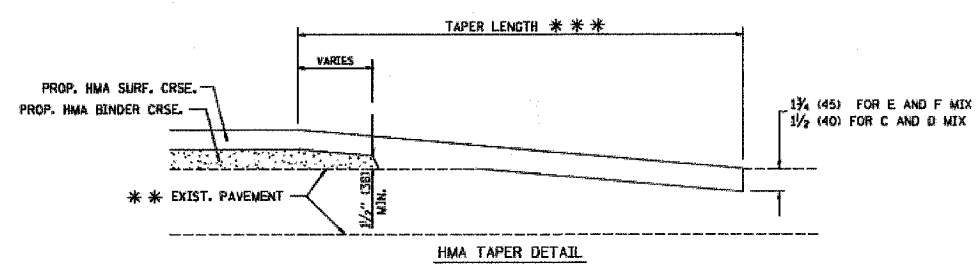
OPTION 1



OPTION 2
TYPICAL TEMPORARY RAMP



BUTT JOINT DETAIL



TYPICAL BUTT JOINT AND HMA TAPER
FOR RESURFACING ONLY

** PC CONCRETE, HMA OR HMA RESURFACED PAVEMENT.

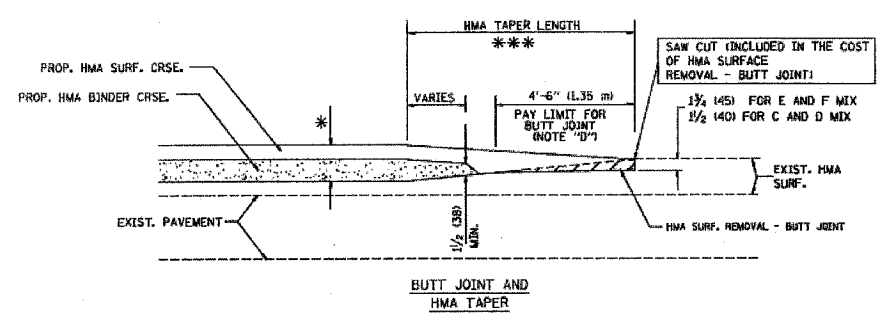
NOTES

- A: MAINLINE ROADWAYS AND MAJOR SIDE ROADS.
- B: MINOR SIDE ROADS.
- C: THE TEMP. RAMP SHALL BE CONSTRUCTED IMMEDIATELY UPON REMOVAL OF THE EXISTING HMA SURFACE.
- D: THE BUTT JOINT SHALL BE CONSTRUCTED IMMEDIATELY PRIOR TO PLACING THE PROPOSED HMA COURSES.
- E: TAPER THE TEMP. RAMP AT A RATE OF 3'-0" (900 mm) PER 1 INCH (25 mm) OF MILLING THICKNESS.
- F: INSTALLATION AND REMOVAL OF THE 4'-6" (1.35 m) TEMP. RAMP IS INCLUDED IN COST OF HMA SURFACE REMOVAL - BUTT JOINT
- G: SEE ARTICLE 406.08 AND 406.14 OF THE STANDARD SPECIFICATIONS FOR "HMA AND/OR PCC SURFACE REMOVAL, BUTT JOINT".
- * SEE TYPICAL SECTIONS FOR MILLING THICKNESS.
- ** 20'-0" (6.1 m) PER 1 (25) RESURFACING (NOTE "A")
- ** 10'-0" (3.0 m) PER 1 (25) RESURFACING (NOTE "B")

BASIS OF PAYMENT:

THE BUTT JOINT WILL BE PAID FOR AT THE CONTRACT UNIT PRICE PER SQUARE YARD (SQUARE METER) FOR "HOT-MIX ASPHALT SURFACE REMOVAL - BUTT JOINT" OR FOR "PORTLAND CEMENT CONCRETE SURFACE REMOVAL - BUTT JOINT".

ALL DIMENSIONS ARE IN INCHES (MILLIMETERS) UNLESS OTHERWISE SHOWN.



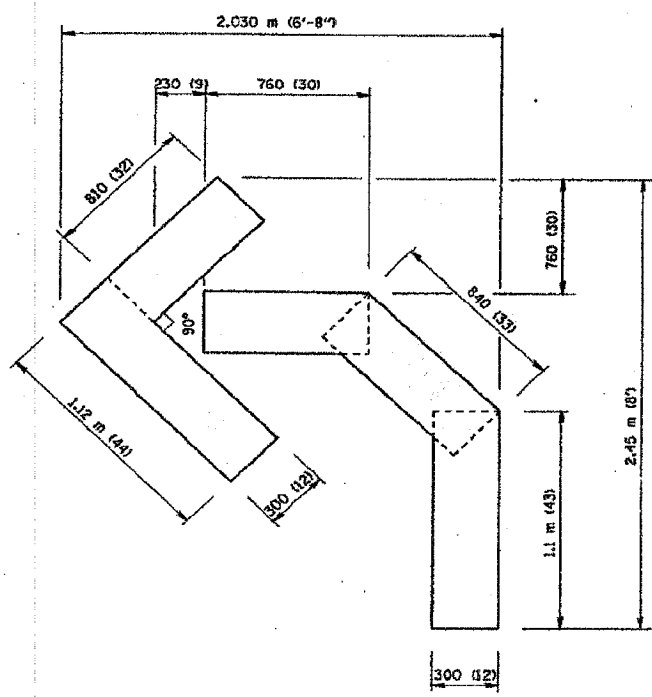
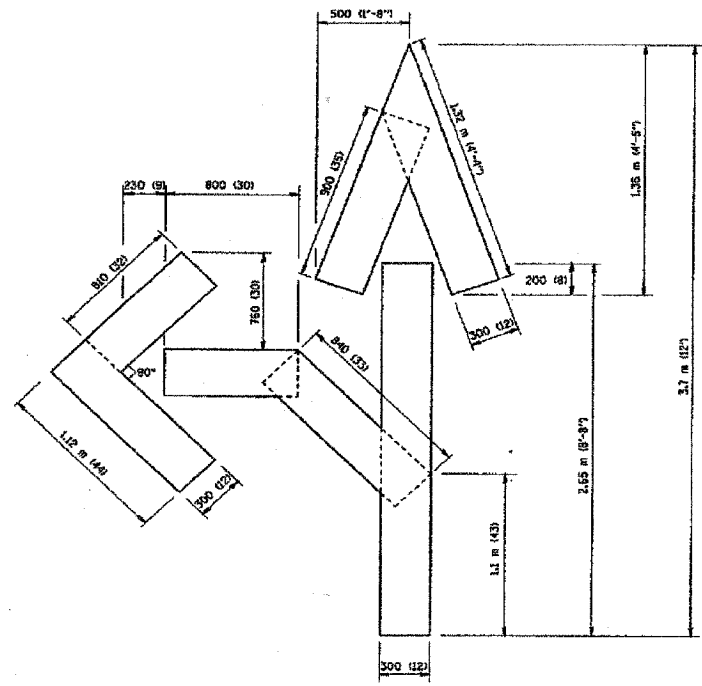
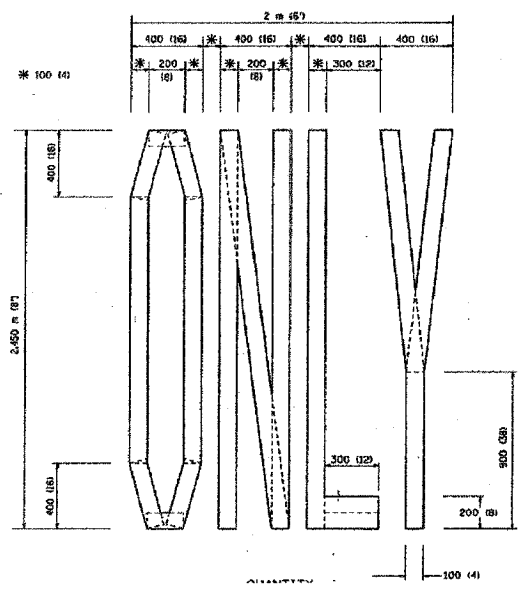
TYPICAL BUTT JOINT AND HMA TAPER
FOR MILLING AND RESURFACING

FILE NAME: H:\dave\122-34\bd22.dgn	USER NAME: gng@carolstream.com	DESIGNED: M. DE YONG	REVISED: R. SHAH 10-25-94
		DRAWN: -	REVISED: A. ABBAS 03-23-97
		CHECKED: -	REVISED: M. COMEZ 04-06-01
		DATE: 06-13-90	REVISED: R. BORO 01-01-07

STATE OF ILLINOIS
DEPARTMENT OF TRANSPORTATION

BUTT JOINT AND HMA TAPER DETAILS			
SCALE: NONE	SHEET NO. 1	OF 1 SHEETS	STA. TO STA.

PLAN ROUTE NO.	SECTION	COUNTY	SHEETS	SHEET
1379	06-00050-00-RS	DUPAGE	13	13
ILLINOIS PROJECT: M-8003 (662)				
63047				



Carol Stream
© 1996 Village of Carol Stream
ENGINEERING SERVICES
500 N. GARY AVENUE
60188
(630) 871 - 6220

NO.	DATE	REVISIONS DESCRIPTION

- PLAN SHEET DESIGNATION
- COVER
 - G - GENERAL
 - H - HAZARDOUS MATERIALS
 - C - CIVIL
 - L - LANDSCAPE
 - S - STRUCTURAL
 - A - ARCHITECTURAL
 - I - INTERIORS
 - Q - EQUIPMENT
 - F - FIRE PROTECTION
 - P - PLUMBING
 - M - MECHANICAL
 - E - ELECTRICAL
 - T - TELECOMMUNICATIONS
 - R - RESOURCE

PROJECT NO.:	M-8003 (662)
DWG FILE:	FULLERTON AVENUE
SCALE:	N/A
DRAWING DATE:	1/10/2008
DESIGNED BY:	FC
DRAWN BY:	FC
CHECKED BY:	BC
PLOTTED BY:	MS

VILLAGE OF CAROL STREAM
ILLINOIS

FULLERTON AVENUE (LAPP)
PROJECT

SHEET TITLE

IDOT PAVEMENT MARKING
LETTERS & SYMBOLS
FOR TRAFFIC STAGING

All dimensions are in millimeters (inches) unless otherwise shown.

ILLINOIS DEPARTMENT OF TRANSPORTATION

**PAVEMENT MARKING
LETTERS AND SYMBOLS
FOR TRAFFIC STAGING**

REVISIONS	NAME	DATE
	T. RAMMACHER	09/18/94
	J. OBERLE	06/01/96
	T. RAMMACHER	06/05/96
	T. RAMMACHER	11/04/97
	T. RAMMACHER	03/02/98
	E. GOMEZ	08/28/00

SCALE: NONE
DATE 11/20/01

DRAWN BY CADD
CHECKED BY