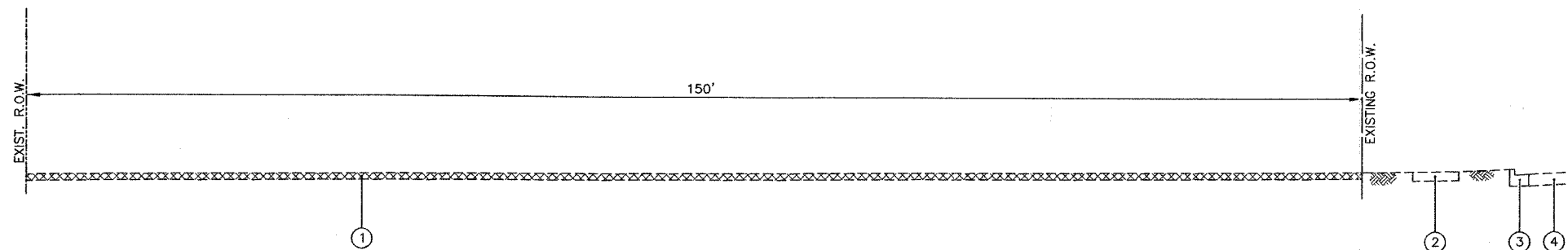


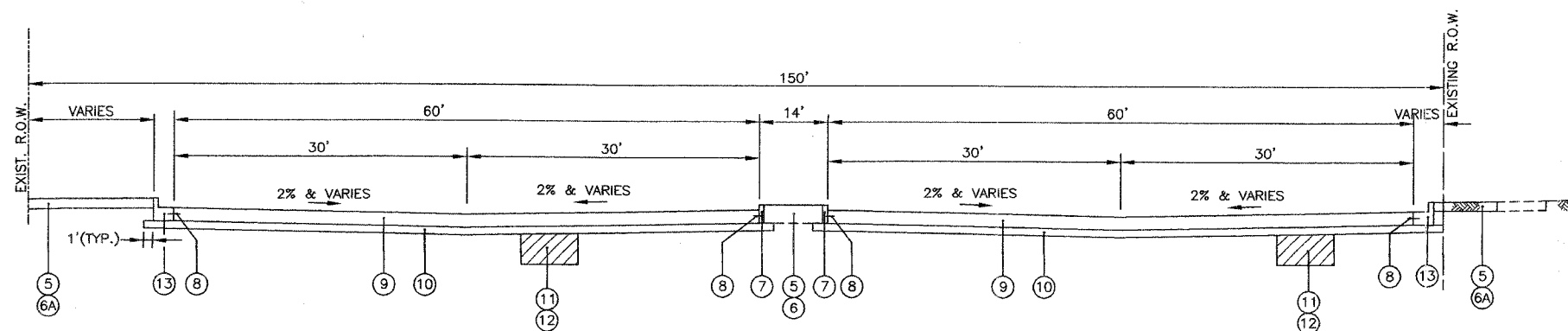
F.A.U. RTE.	SECTION	COUNTY	TOTAL SHEETS	SHEET NO.
2689	06-00087-00-PK	COOK	18	4
STA.		TO STA.		
ILLINOIS FED. AID PROJECT				
CONTRACT NO. 63057				

LEGEND

- ① EXISTING SURFACE (WITH REMOVALS AS DETAILED ON REMOVAL PLAN)
- ② EXISTING P.C.C. SIDEWALK
- ③ EXISTING CONCRETE CURB AND GUTTER, TYPE B-6.24
- ④ EXISTING P.C.C. PAVEMENT
- ⑤ LANDSCAPE RESTORATION (SEE LANDSCAPE PLAN)
- ⑥ TOPSOIL FURNISH AND PLACE 18"
- ⑥A TOPSOIL FURNISH AND PLACE, 4"
- ⑦ CONCRETE CURB, TYPE B
- ⑧ 24" LONG DEFORMED EPOXY-COATED NO. 6 TIE BARS 24" CTRS, 24" LONG (COST INCLUDED IN CONCRETE CURB AND CONCRETE CURB AND GUTTER)
- ⑨ P.C.C. PAVEMENT, 7"
- ⑩ SUB-BASE GRANULAR MATERIAL, TYPE B 4"
- ⑪ POROUS GRANULAR EMBANKMENT, SUBGRADE (AT LOCATIONS DESIGNATED BY THE ENGINEER)
- ⑫ GEOTECHNICAL FABRIC FOR GROUND STABILIZATION (AT LOCATIONS DESIGNATED BY THE ENGINEER)
- ⑬ COMBINATION CONCRETE CURB AND GUTTER, TYPE B-6.12 (THICKNESS OF CURB FLAG SHALL BE EQUAL TO THE THICKNESS OF THE PROPOSED PAVEMENT)



EXISTING TYPICAL SECTION - COMMUTER PARKING FACILITY



PROPOSED TYPICAL SECTION - COMMUTER PARKING FACILITY

SOILS NOTE:

POROUS GRANULAR EMBANKMENT SUBGRADE (PGES) HAS BEEN PROVIDED AT THE LOCATIONS INDICATED FOR SOILS WHICH TEND TO BE UNSTABLE WHEN WET. THE ACTUAL NEED FOR REMOVAL AND REPLACEMENT WITH PGE WILL BE DETERMINED IN THE FIELD AT THE TIME OF CONSTRUCTION BY THE ENGINEER (BY USE OF A CONE PENETROMETER IN CONJUNCTION WITH THE IDOT SUBGRADE MANUAL). IF UNSTABLE SOILS ARE ENCOUNTERED, THE SOILS SHALL BE REMOVED AND REPLACED WITH PGES. IF UNSTABLE SOIL IS NOT ENCOUNTERED, THEN THE QUANTITY WILL BE DEDUCTED AND NO ADDITIONAL COMPENSATION WILL BE DUE THE CONTRACTOR.

REVISIONS		ILLINOIS DEPARTMENT OF TRANSPORTATION F.A.U. 2689 WOLF ROAD COMMUTER PARKING FACILITY EXPANSION
NAME	DATE	
		TYPICAL SECTIONS
SCALE: NTS		DRAWN BY: SMP CHECKED BY: JDS
DATE:		