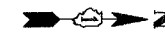
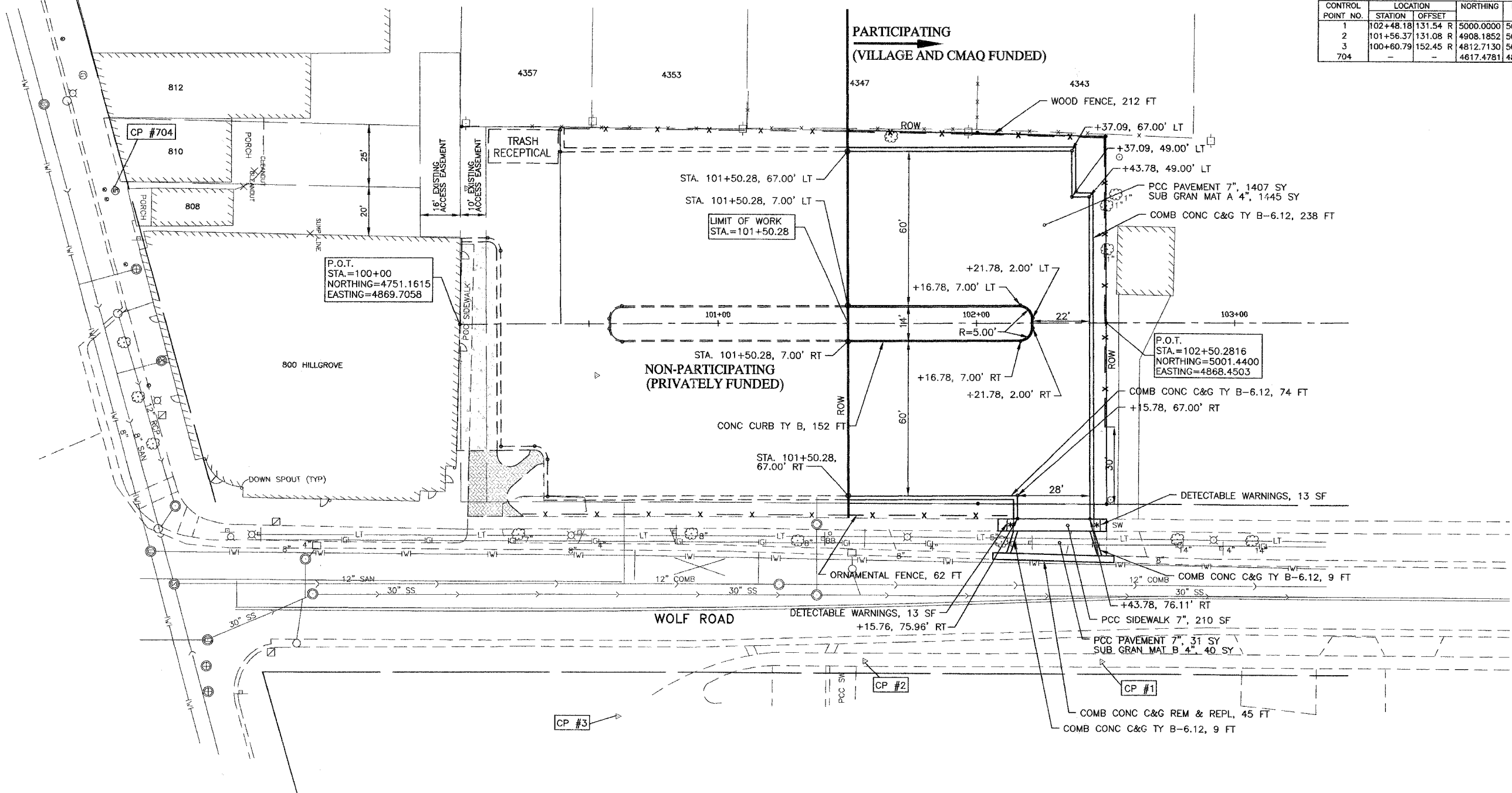


F.A.U. RTE.	SECTION	COUNTY	TOTAL SHEETS	SHEET NO.
2689	06-00087-00-PK	COOK	18	6
STA.		TO STA.		
ILLINOIS FED. AID PROJECT				
CONTRACT NO. 63057				



CONTROL POINT NO.	LOCATION		NORTHING	EASTING	ELEVATION	DESCRIPTION
	STATION	OFFSET				
1	102+48.18	131.54 R	5000.0000	5000.0000	672.81	CUT CROSS
2	101+56.37	131.08 R	4908.1852	5000.0000	673.89	CUT CROSS
3	100+60.79	152.45 R	4812.7130	5021.8502	675.85	CUT CROSS
704	-	-	4617.4781	4817.1233	676.32	CUT CROSS



REVISIONS		ILLINOIS DEPARTMENT OF TRANSPORTATION F.A.U. ROUTE 2689 WOLF ROAD COMMUTER PARKING FACILITY EXPANSION
NAME	DATE	
		GEOMETRIC PLAN

JJB JAMES J. BENES & ASSOCIATES, INC.
950 Warrenville Road, Suite 101, Lisle, Illinois 60532
Tel. (630) 719-7570 - Fax (630) 719-7589

SCALE: 1"=20'
DATE: DRAWN BY: BCD
CHECKED BY: JDS