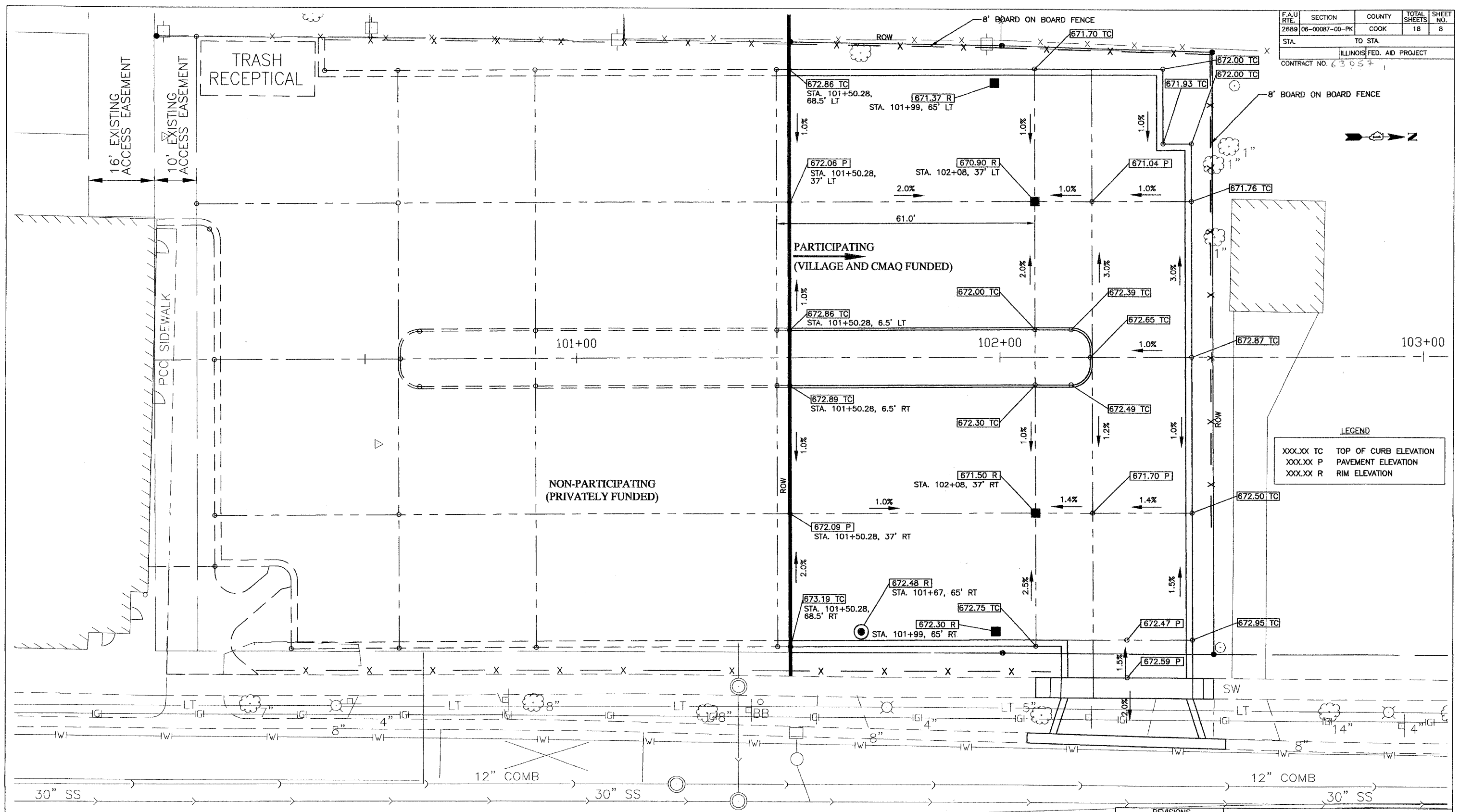


F.A.U. RTE.	SECTION	COUNTY	TOTAL SHEETS	SHEET NO.
2689	06-0007-00-PK	COOK	18	8
STA.		TO STA.		
ILLINOIS FED. AID PROJECT				
CONTRACT NO. 63057				



LEGEND

XXX.XX TC	TOP OF CURB ELEVATION
XXX.XX P	PAVEMENT ELEVATION
XXX.XX R	RIM ELEVATION

WOLF ROAD

REVISIONS	
NAME	DATE

ILLINOIS DEPARTMENT OF TRANSPORTATION
 F.A.U. ROUTE 2689
 WOLF ROAD COMMUTER PARKING FACILITY EXPANSION

GRADING PLAN

JJB JAMES J. BENES & ASSOCIATES, INC.
 950 Warrenville Road, Suite 101, Lisle, Illinois 60532
 Tel. (630) 719-7570 · Fax (630) 719-7589

SCALE: 1"=10'
 DATE: _____
 DRAWN BY: BCD
 CHECKED BY: JDS