


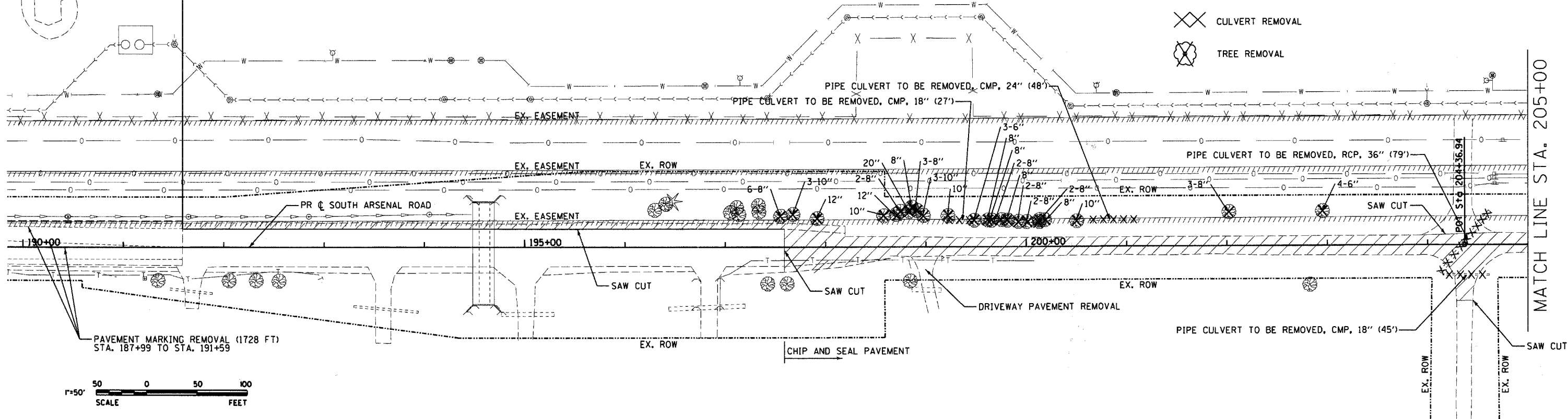


PROJECT LIMIT
STA 191+59

REMOVAL LEGEND

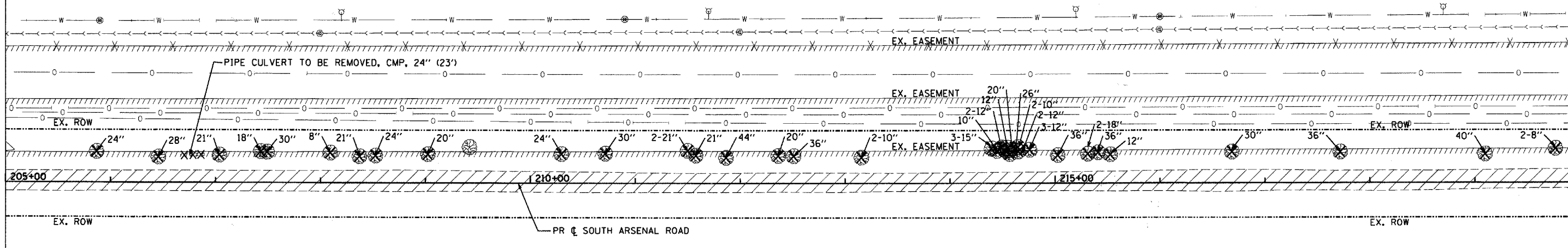
-  PAVEMENT REMOVAL
-  CULVERT REMOVAL
-  TREE REMOVAL



1"=50'
SCALE
50 0 50 100
FEET




MATCH LINE STA. 205+00

MATCH LINE STA. 205+00



1"=50'
SCALE
50 0 50 100
FEET

REMOVAL LEGEND

-  PAVEMENT REMOVAL
-  CULVERT REMOVAL
-  TREE REMOVAL

MATCH LINE STA. 220+00

6/16/2008 Right of Way Consultant Authority South Arsenal Road East CAD@ESI10 EX. 01.sht

ESI CONSULTANTS, LTD
1978 N. MIL. STREET, SUITE 106
NAPERVILLE, IL 60563
(630) 429-1700
WWW.ESI-CONSULTANTS.LTD.COM
ILLINOIS DEPARTMENT OF PROFESSIONAL REGULATION REGISTRATION #184-003668

DESIGNED - JRS	REVISED -
DRAWN - DJN	REVISED -
CHECKED - MAR	REVISED -
DATE - 6/16/2008	REVISED -

STATE OF ILLINOIS
DEPARTMENT OF TRANSPORTATION

REMOVAL PLAN

SCALE: SHEET NO. OF SHEETS STA. TO STA.

F.A. RTE.	SECTION	COUNTY	TOTAL SHEETS	SHEET NO.
	08-00039-00-FP	WILL	89	10
FED. ROAD DIST. NO.			ILLINOIS FED. AID PROJECT	
			CONTRACT NO. 63066	