

MATCH LINE STA. 231+00

MATCH LINE STA. 237+00

PROP. POLY. HOT-MIX ASPHALT SURFACE CSE.,  
STONE MATRIX ASPHALT, N80, 2"  
PROP. POLY. HOT-MIX ASPHALT BINDER CSE.,  
IL-19.0, N90, 8"

MATCH EXISTING PAVEMENT

EX. EASEMENT

PROP. COMB. CURB AND GUTTER, TYPE B-6.24

EX. ROW

EX. ROW

EX. EASEMENT

DEPRESS CURB FOR ENTRANCE

PR S SOUTH ARSENAL ROAD

PCL

EX. ROW

EX. ROW

PROP. 2' AGGREGATE SHOULDER, TYPE B, 8"

PROP. 4' HOT-MIX ASPHALT SHOULDER, 10"

PROP. POLY HOT-MIX ASPHALT SURFACE CSE.,  
STONE MATRIX ASPHALT, N80, 2"  
PROP. POLY HOT-MIX ASPHALT BINDER CSE.,  
STONE MATRIX ASPHALT, N80, 2"  
PROP. POLY. HOT-MIX ASPHALT BINDER CSE.,  
IL-19.0, N90, 8"  
PROP. AGGREGATE SUB-GRADE, 12"

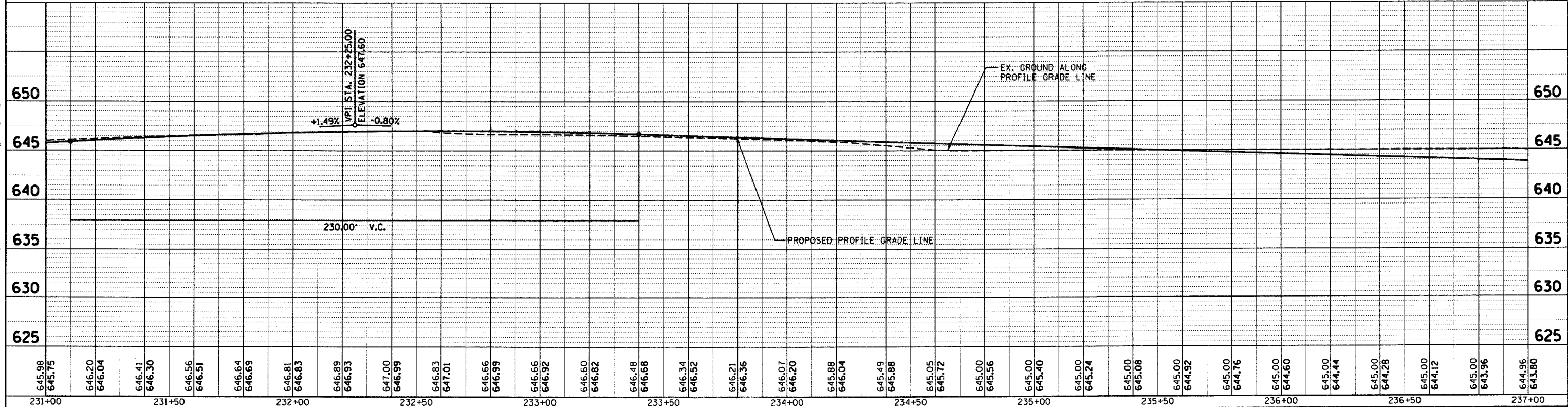
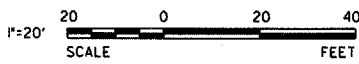
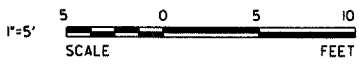


Table with 20 columns of elevation data corresponding to stationing from 231+00 to 237+00.

6/16/2008 K:\Projects\Bulliet Arsenal Development Authority\South Arsenal Road.Eas\c:\00\Sh\20 PP8.sht

ESI CONSULTANTS, LTD  
1070 N. MILL STREET, SUITE 100  
NAPERVILLE, IL 60563  
(630) 425-1700  
WWW.ESICONCONSULTANTS.COM  
ILLINOIS DEPARTMENT OF PROFESSIONAL REGULATION REGISTRATION #184-003895

DESIGNED - JRS  
DRAWN - DJN  
CHECKED - MAR  
DATE - 6/16/2008

REVISED -  
REVISED -  
REVISED -  
REVISED -

STATE OF ILLINOIS  
DEPARTMENT OF TRANSPORTATION

PLAN AND PROFILE

SCALE: 1"=20' SHEET NO. OF SHEETS STA. 231+00 TO STA. 237+00

Table with project details: F.A. RTE., SECTION 08-00039-00-FP, COUNTY WILL, TOTAL SHEETS 89, SHEET NO. 20, CONTRACT NO. 63066, FED. ROAD DIST. NO., ILLINOIS FED. AID PROJECT.