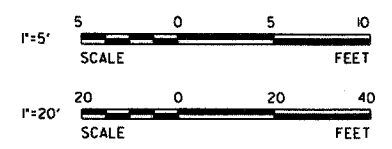
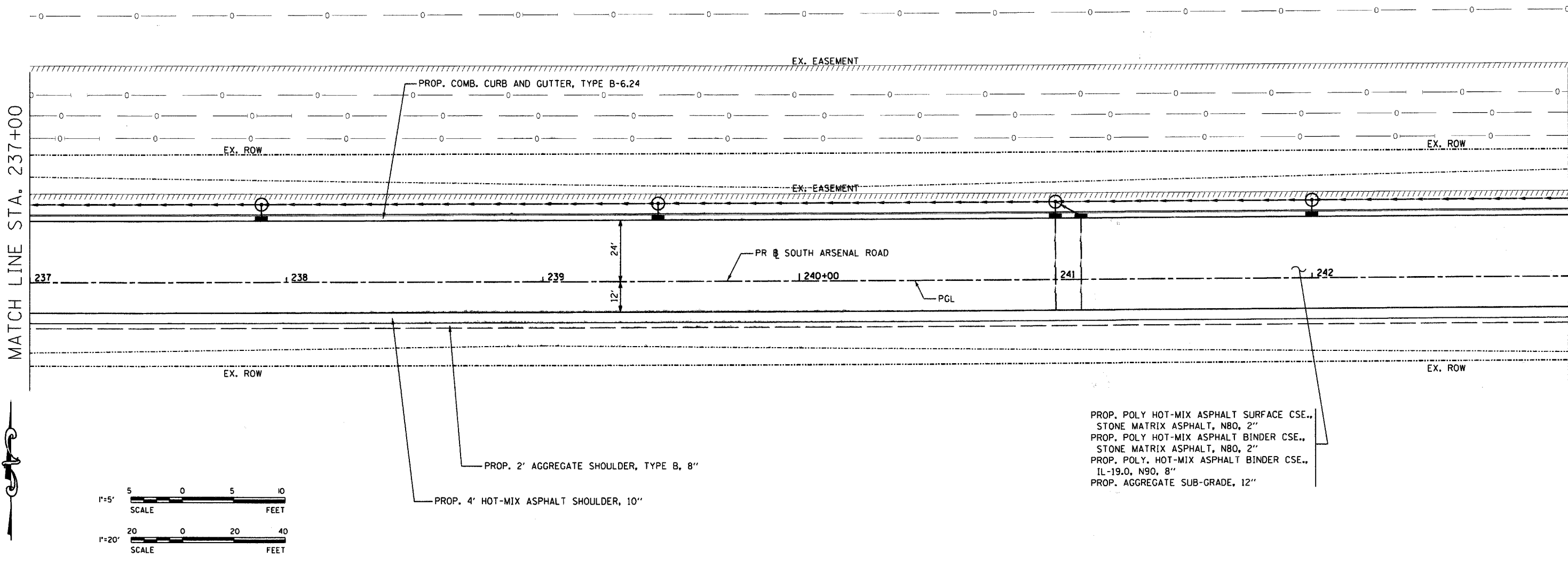
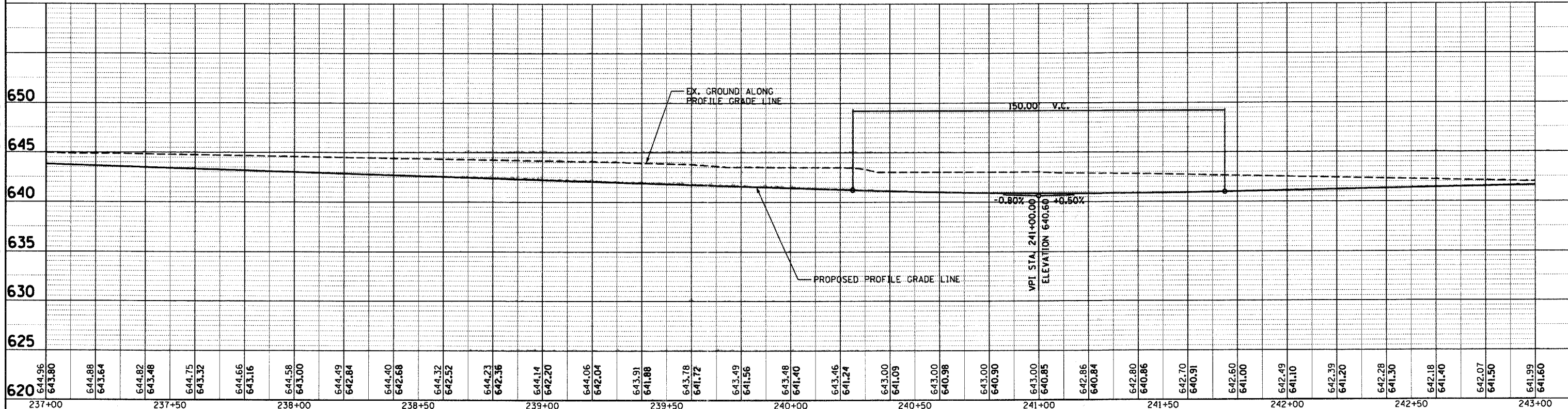


MATCH LINE STA. 237+00

MATCH LINE STA. 243+00



PROP. POLY HOT-MIX ASPHALT SURFACE CSE.,  
 STONE MATRIX ASPHALT, N80, 2"  
 PROP. POLY HOT-MIX ASPHALT BINDER CSE.,  
 STONE MATRIX ASPHALT, N80, 2"  
 PROP. POLY. HOT-MIX ASPHALT BINDER CSE.,  
 IL-19.0, N90, 8"  
 PROP. AGGREGATE SUB-GRADE, 12"



620	644.96	643.80	644.88	643.64	644.82	643.48	644.75	643.32	644.66	643.16	644.58	643.00	644.49	642.84	644.40	642.68	644.32	642.52	644.23	642.36	644.14	642.20	644.06	642.04	643.91	641.88	643.78	641.72	643.49	641.56	643.48	641.40	643.46	641.24	643.00	641.09	643.00	640.98	643.00	640.90	643.00	640.85	642.86	640.84	642.80	640.86	642.70	640.91	642.60	641.00	642.49	641.10	642.39	641.20	642.28	641.30	642.18	641.40	642.07	641.50	641.99	641.60
237+00	237+50				238+00				238+50				239+00				239+50				240+00				240+50				241+00				241+50				242+00				242+50				243+00																	

**ESI** ESI CONSULTANTS, LTD  
 1870 N. MILL STREET, SUITE 100  
 NAPERVILLE, IL 60563  
 (630) 426-1700  
 WWW.ESICONSULTANTS.LTD.COM  
 ILLINOIS DEPARTMENT OF PROFESSIONAL REGULATION REGISTRATION #184-003885

DESIGNED - JRS  
 DRAWN - DJN  
 CHECKED - MAR  
 DATE - 6/16/2008

REVISED -  
 REVISED -  
 REVISED -  
 REVISED -

STATE OF ILLINOIS  
 DEPARTMENT OF TRANSPORTATION

PLAN AND PROFILE

F.A. RTE.	SECTION	COUNTY	TOTAL SHEETS	SHEET NO.
	08-00039-00-FP	WILL	89	21
FED. ROAD DIST. NO.		ILLINOIS FED. AID PROJECT		
CONTRACT NO. 63066				

SCALE: 1"=20' SHEET NO. OF SHEETS STA. 237+00 TO STA. 243+00

6/16/2008 K:\Projects\Joliet Arsenal Development Authority\South Arsenal Road.Eas\CAD\Sheet21 PP9.sht