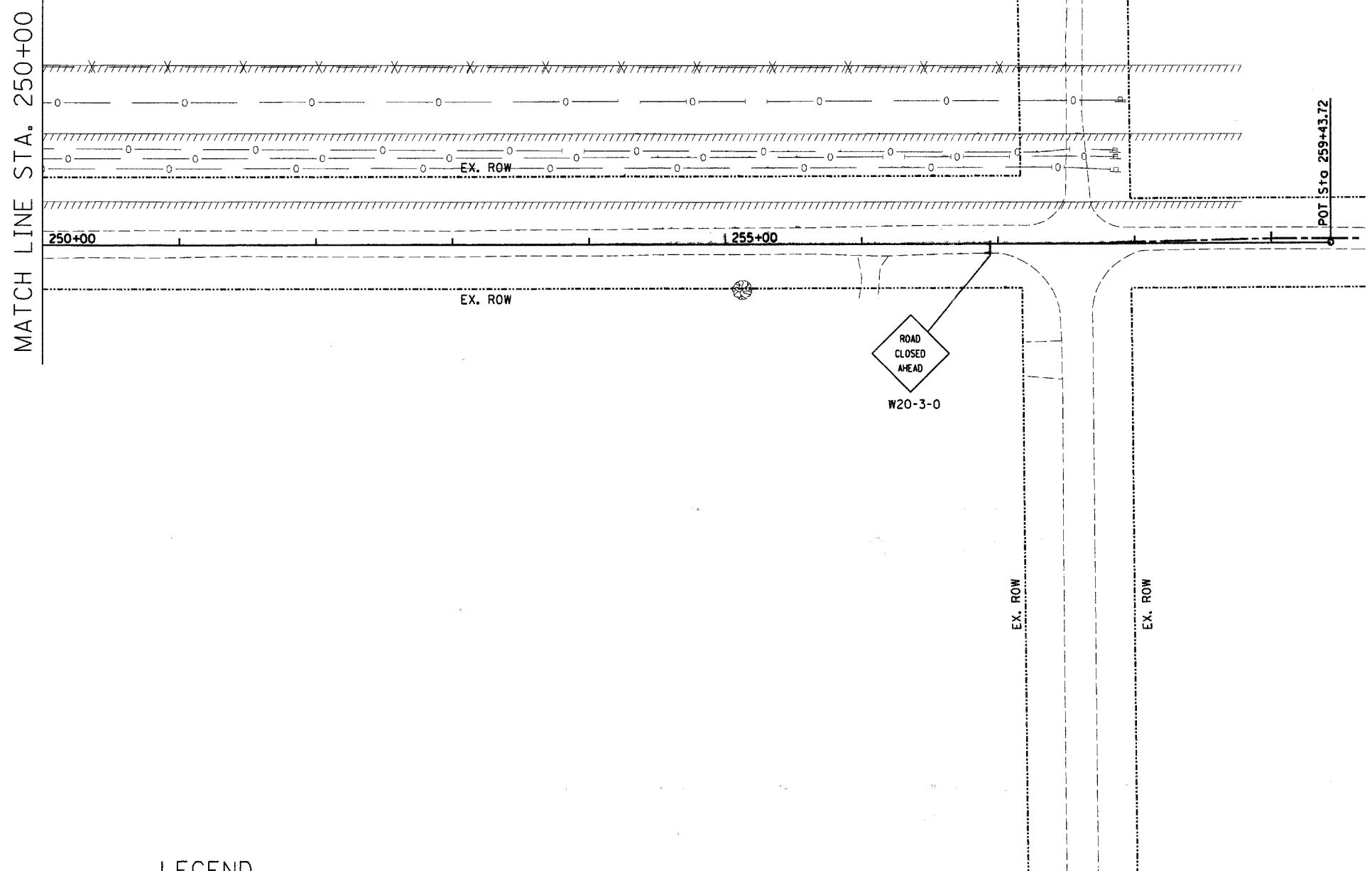


6/16/2008 11:01:01 AM C:\Users\jgiles\Documents\South Arsenal Road\Estimate\South Arsenal Road\Estimate\Sheet\46 MOT-01.03.sht



LEGEND

- CONSTRUCTION WORK ZONE
- TYPE III BARRICADE WITH FLASHING LIGHTS
- SIGN

NOTES

LOCAL ACCESS TO SOUTH ARSENAL ROAD
RESIDENCES MUST BE MAINTAINED
DURING CONSTRUCTION

ESI CONSULTANTS, LTD
1676 N. MILL STREET, SUITE 100
NAPERVILLE, IL 60563
(630) 420-1700
WWW.ESICONSULTANTS.LTD.COM
ILLINOIS DEPARTMENT OF PROFESSIONAL REGULATION REGISTRATION #184-003885

DESIGNED - JRS	REVISED -
DRAWN - DJN	REVISED -
CHECKED - MAR	REVISED -
DATE - 6/16/2008	REVISED -

DESIGNED - JRS	REVISED -
DRAWN - DJN	REVISED -
CHECKED - MAR	REVISED -
DATE - 6/16/2008	REVISED -

STATE OF ILLINOIS
DEPARTMENT OF TRANSPORTATION

MAINTENANCE OF TRAFFIC PLAN
STAGE 1

SCALE: 1"=50' SHEET NO. OF SHEETS STA. 250+00 TO STA. 258+09

F.A. RTE.	SECTION	COUNTY	TOTAL SHEETS	SHEET NO.
	08-00039-00-FP	WILL	89	46
FED. ROAD DIST. NO.			ILLINOIS FED. AID PROJECT	
			CONTRACT NO. 63066	