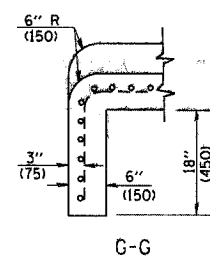
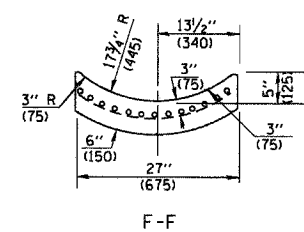
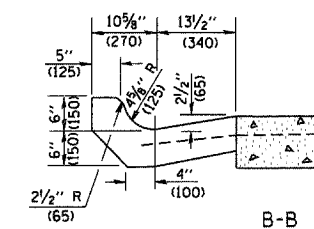
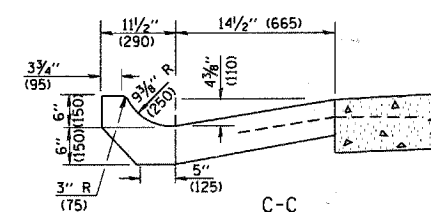
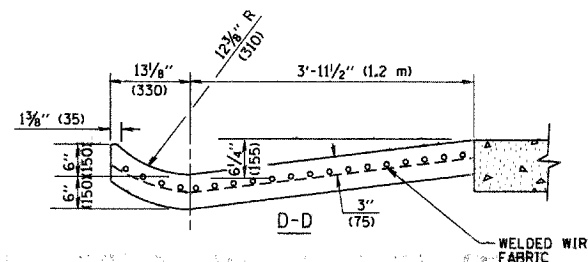
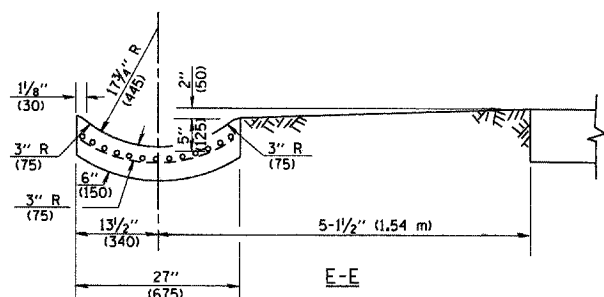


A-A \*

\* DIMENSIONS OF THE CURB & GUTTER AT SECTION A-A ARE SHOWN ON STATE STANDARD 606001. FOR DETAILS OF OUTLET FOR CONCRETE CURB & GUTTER, TYPE B-6.24 (B-15.60) SEE STATE STANDARD 606006.



GENERAL NOTES

GUTTER OUTLET SHALL BE TIED TO THE PAVEMENT IN ACCORDANCE WITH DETAILS FOR LONGITUDINAL CONSTRUCTION JOINT SHOWN ON STANDARD 420001.

TIE BARS SHALL BE NO. 20 (NO.6) AT 24" (600) CENTERS UNLESS OTHERWISE SHOWN.

IF THE AVERAGE GRADE OF PAVEMENT FOR THE DISTANCE FROM SECTION A-A TO D-D EXCEEDS 2%, THIS DISTANCE SHALL BE INCREASED 6' (1.8 m) FOR EACH 1% INCREASE IN GRADE.

QUANTITIES

FOR SECTION A-A TO E-E AND CURTAIN WALL =  
 1.25 CU. YDS. (0.96 m<sup>3</sup>) CLASS S1 CONCRETE (OUTLET) FOR 9" (225) PAV'T.  
 1.27 CU. YDS. (0.96 m<sup>3</sup>) CLASS S1 CONCRETE (OUTLET) FOR 10" (250) PAV'T.  
 FOR SECTION F-F =  
 0.045 CU. YDS. (0.03 m<sup>3</sup>) CLASS S1 CONCRETE PER FT. (M).

ALL DIMENSIONS ARE IN INCHES (MILLIMETERS) UNLESS OTHERWISE SHOWN.

FILE NAME = W:\diststd\22x34\bd03.dgn

USER NAME = gaglianobt

DESIGNED - M. DE YONG

REVISED - R. SHAH 09-09-94

DRAWN -

REVISED - R. SHAH 10-25-94

CHECKED -

REVISED - E. GOMEZ 12-21-00

PLOT DATE = 1/4/2008

DATE - 08-04-86

STATE OF ILLINOIS  
 DEPARTMENT OF TRANSPORTATION

OUTLET FOR CONCRETE  
 CURB AND GUTTER

SCALE: NONE SHEET NO. 1 OF 1 SHEETS STA. TO STA.

F.A. RTE.	SECTION	COUNTY	TOTAL SHEETS	SHEET NO.
	08-00039-00-PP	WILL	89	53
BD600-01 (BD-03)		CONTRACT NO. 63066		
FED. ROAD DIST. NO. 1 ILLINOIS FED. AID PROJECT				