

DROP BOX NO. 1

STA. 28 + 64

| | | | | |
|---------------------|------------|---------------------------|--------------|-----------|
| CONTRACT NO. 64C72 | | | | |
| F.A.S. RTE. | SECTION | COUNTY | TOTAL SHEETS | SHEET NO. |
| 1177 | (110,111)T | LEE | 59 | 23 |
| STA. | | TO STA. | | |
| FED. ROAD DIST. NO. | | ILLINOIS FED. AID PROJECT | | |
| SHEET 2 OF 2 | | | | |

GENERAL NOTES

Order h2, v1 & v2 Bars Full Length and cut to fit in field. Use Remainder in Opp. Wall

This work shall be done according to the applicable portion of 503, 508, and 540 of the Standard Specifications.

Contractor shall field verify Galvanized pipe length

Exposed edges shall be beveled 3/4".

The contract unit price "each" for DROP BOX NO. 1 shall include the Expansion Bolts, Galvanized Pipe, Concrete Structures, Reinforcement Bars, Bolts, Nuts, Washers, Steel Plates, earth excavation where required, and necessary grading to fit the inlet as shown in the cross sections or to the slope

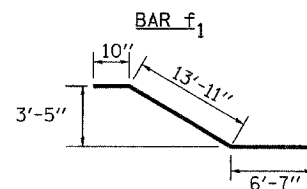
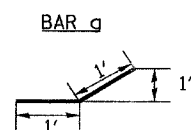
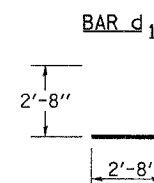
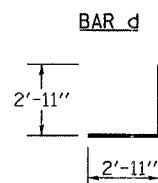
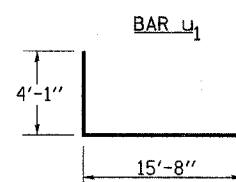
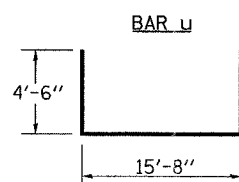
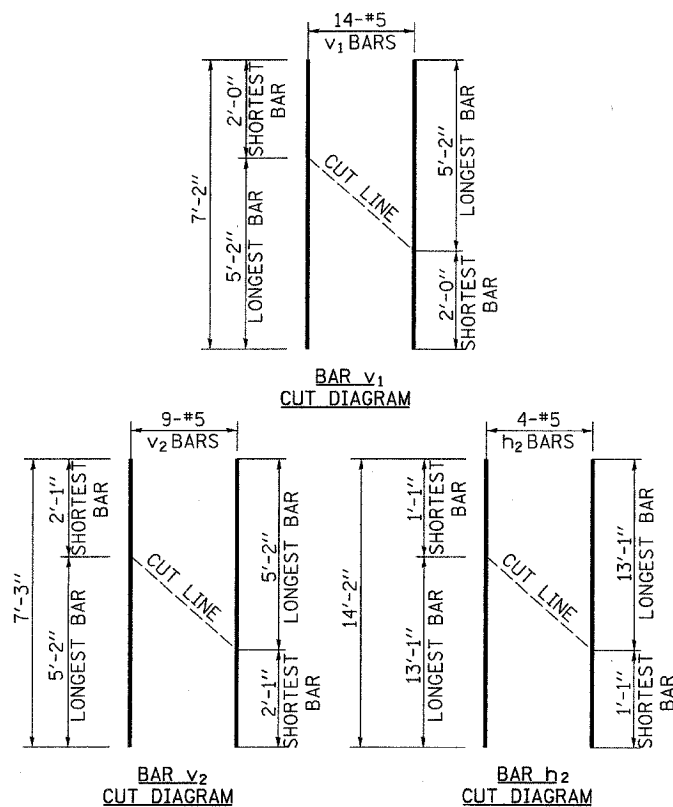
Reinforcement bars shall conform to the requirements of ASTM A 706 Gr. 60 (IL Modified). See Special Provisions.

Steel Plates shall conform to AASHTO M-183 and shall be Galvanized conforming to AASHTO M-111.

Bolts, Nuts, and Washers shall be in accordance with Article 505 of the Standard Specification and shall be galvanized.

See Plan & Profile Sheet for more information.

See Cross Section Sheet for more information.



BILL OF MATERIAL

(For Information Only)

| BAR | SIZE | NO. | LENGTH | SHAPE |
|--|------|-----|---------|--------|
| d | 5 | 36 | 5'-10" | |
| d1 | 5 | 31 | 5'-4" | |
| f | 6 | 2 | 15'-8" | |
| f1 | 4 | 2 | 21'-4" | |
| g | 5 | 17 | 2'-0" | |
| h | 5 | 42 | 15'-8" | |
| h1 | 5 | 34 | 20'-0" | |
| h2 | 5 | 8 | 14'-2" | |
| h3 | 5 | 12 | 21'-0" | |
| h4 | 5 | 6 | 15'-8" | |
| v | 5 | 22 | 2'-9" | |
| v1 | 5 | 14 | 7'-2" | |
| v2 | 5 | 9 | 7'-3" | |
| u | 5 | 2 | 24'-8" | |
| u1 | 5 | 2 | 23'-10" | |
| DESCRIPTION | | | UNIT | QTY |
| CONCRETE STRUCTURES | | | CU YD | 17.1 |
| REINFORCEMENT BARS | | | LB | 2710 |
| DESCRIPTION | | | UNIT | QTY. |
| 3.5" GALVANIZED STEEL PIPE | | | 5e | 16'-3" |
| | | | 7e | 13'-6" |
| | | | 7e | 6'-9" |
| 3.5" GALVANIZED PIPE CAPS | | | EACH | 38 |
| 1/4" GALVANIZED STEEL PLATE (9" NOMINAL) | | | EACH | 10 |
| 1/2"x4"x14" GALVANIZED STEEL PLATE | | | EACH | 17 |
| 5/8"x9" GALVANIZED STEEL BOLTS | | | EACH | 35 |

PLOT DATE = 2/14/2008
 FILE NAME = V:\b\rdg\2244-15.dwg
 USER = rdg