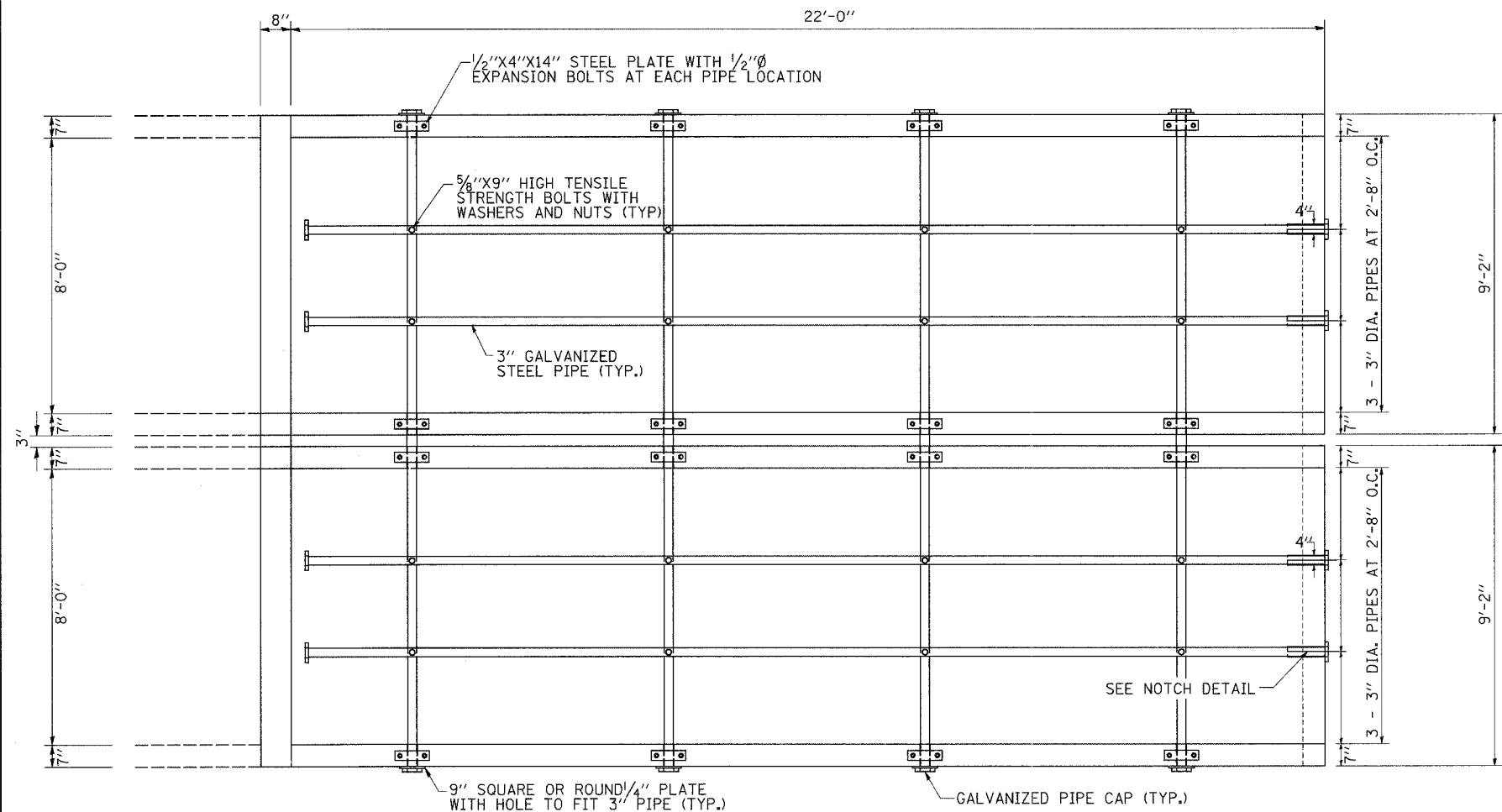
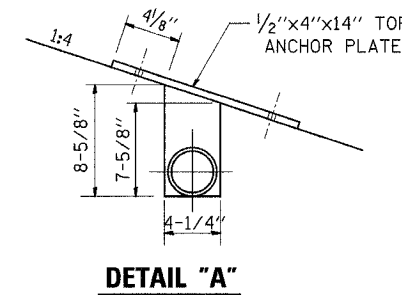
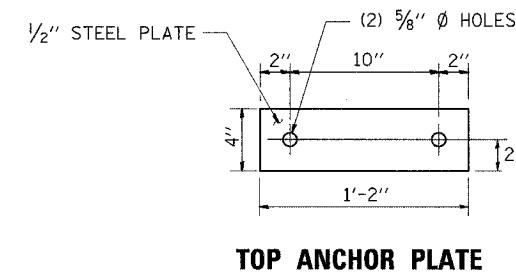
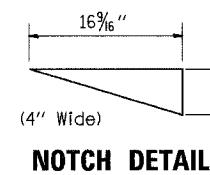


BOX CULVERT END SECTION NO.3 STA. 277 + 15

CONTRACT NO. 64C72				
F.A.S. RTE.	SECTION	COUNTY	TOTAL SHEETS	SHEET NO.
1177	(110,111)T	LEE	59	27
STA.		TO STA.		
FED. ROAD DIST. NO.		ILLINOIS FED. AID PROJECT		



PLAN VIEW



BILL OF MATERIALS
(For Information Only)

DESCRIPTION	UNIT	QTY.
3" Galvanized Steel Pipe	4e	18'-9"
	4e	22'-0"
3" Galv Pipe Caps	EACH	16
1/4" Galv. Stl. Plate (9" Nominal)	EACH	8
1/2" x 4" x 14" Galv. Steel Plate	EACH	4
5/8" x 9" Galv. Steel Bolts	EACH	16
Expansion Bolts 1/2" Ø	EACH	32

GENERAL NOTES:

Slope flow line of the extension at the same rate as the flow line of the box.

Bolts, Nuts, and Washers shall be in accordance with Article 1006.08 of the standard specifications and shall be galvanized.

The contract unit price "Each" for Box Culvert End Section No. 3 shall be of precast construction and shall include the expansion bolts, galvanized pipes, class SI Concrete, Bolts, Nuts, Reinforcement, washers, and steel plates.

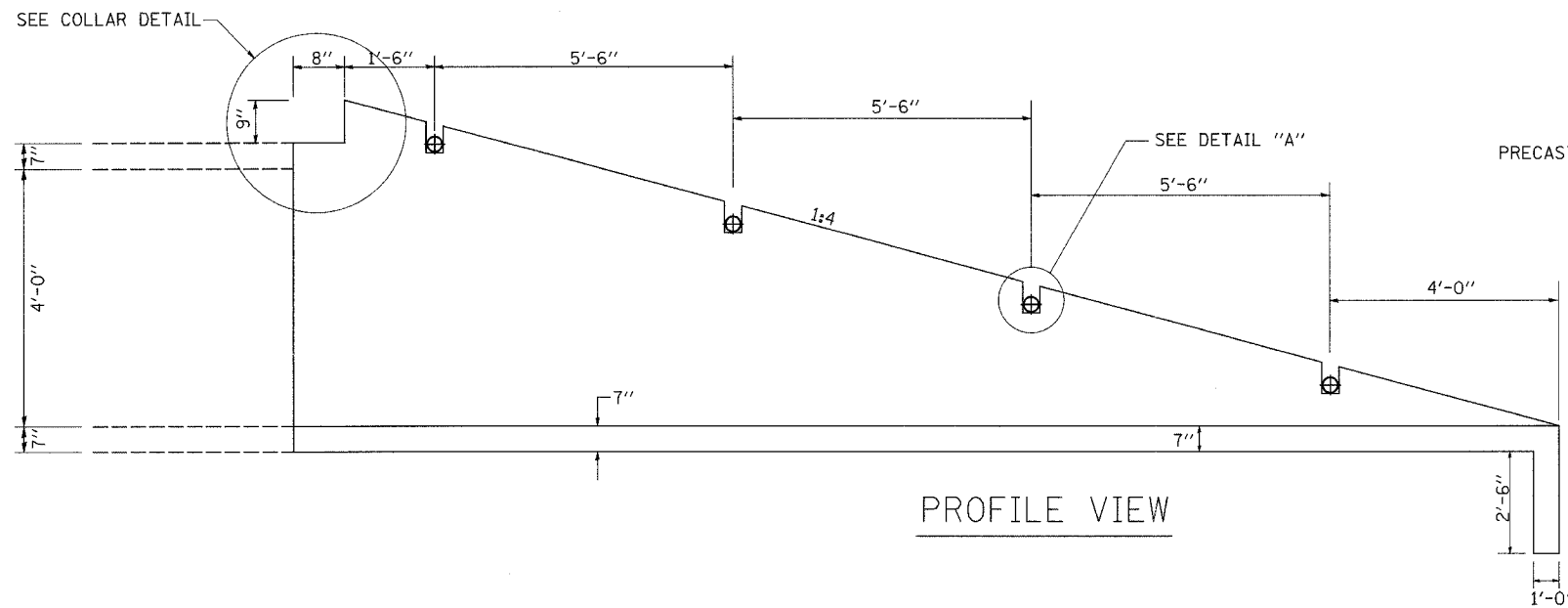
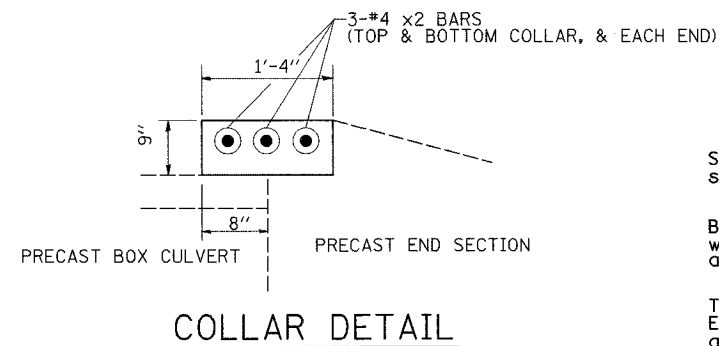
The contractor has the option of using Cast-In-Place and must provide us with shop drawings for review.

All labor and material required for the construction of the connection collar shall be included in the bid item "PRECAST CONCRETE BOX CULVERT 8'x4'".

Steel pipes shall conform to A.S.T.M. A-53 (Type E or S) Grade B, Schedule 40, and shall be galvanized conforming to A.S.T.M. A-120. Contractor shall field verify pipe length.

Steel Plates shall conform to AASHTO M-183 and shall be galvanized conforming to AASHTO M-111.

SEE PLAN AND PROFILE SHEET FOR MORE INFORMATION
SEE CROSS SECTION SHEET FOR MORE INFORMATION



PLOT DATE = Tue Feb 26 18:24:23 2008
 FILE NAME = C:\Users\csh54677\Documents\64C72\culv.dgn
 PLOT SCALE = 0.000000 1/16"
 USER NAME = csh54677