

STATE OF ILLINOIS  
 DEPARTMENT OF TRANSPORTATION  
 DIVISION OF HIGHWAYS

**PROPOSED  
 HIGHWAY PLANS**

FAI ROUTE 80 (I-80)  
 SECTION D2 SPRING PATCHING 2007-2  
 RESURFACING  
 ROCK ISLAND COUNTY  
 C-92-102-08

F.A.I. RTE.	SECTION	COUNTY	TOTAL SHEETS	SHEET NO.
80		ROCK ISLAND	31	1
FED. ROAD DIST. NO.		ILLINOIS	CONTRACT NO. 64D34	

• D2 SPRING PATCHING 2007-2

FOR INDEX OF SHEETS, SEE SHEET NO. 2  
 FOR STATE STANDARDS, SEE SHEET NO. 2

**TRAFFIC VOLUMES:**

I-80

CURRENT ADT: 26,000 (2005) 36% TRUCKS

**OMISSIONS**

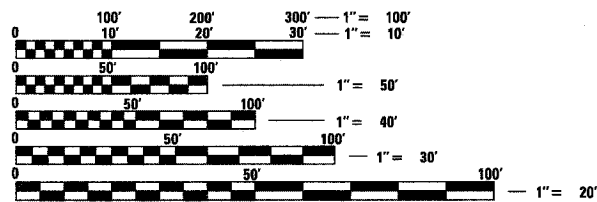
STA 63+90 - 64+15 (WEATHER SENSOR)

STA 92+00 - 95+25 (WIM SCALE)



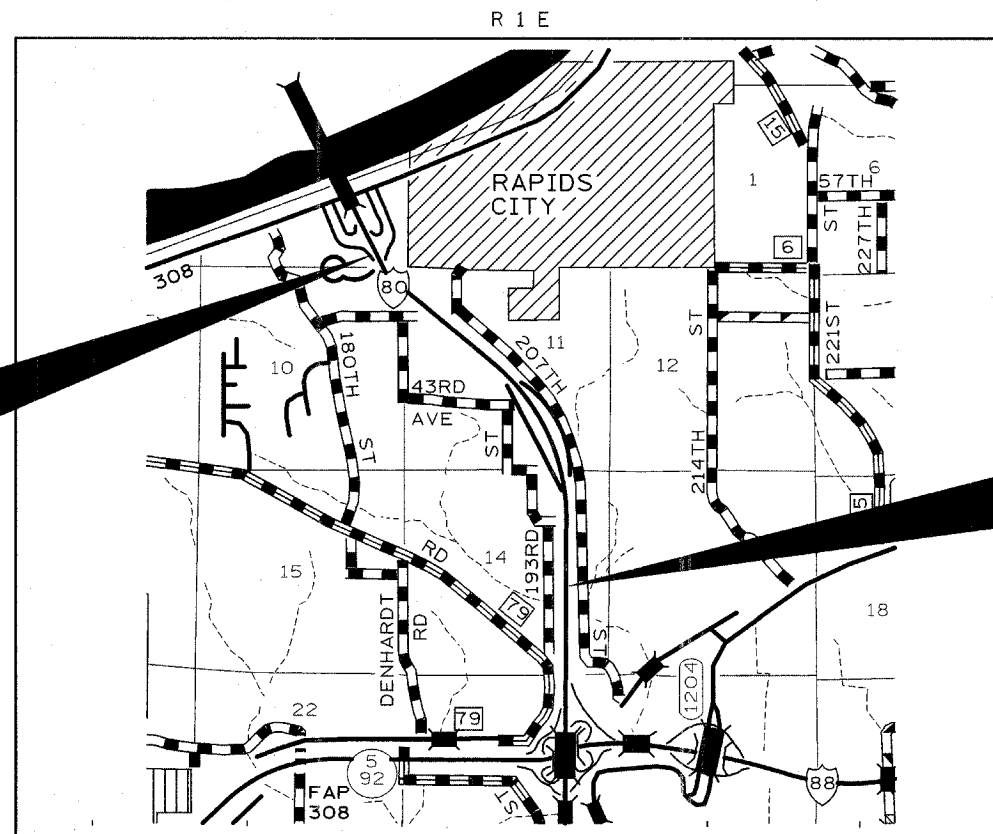
SECTION BEGINS STA. 59+48

SECTION ENDS STA. 177+75



FULL SIZE PLANS HAVE BEEN PREPARED USING STANDARD ENGINEERING SCALES. REDUCED SIZED PLANS WILL NOT CONFORM TO STANDARD SCALES. IN MAKING MEASUREMENTS ON REDUCED PLANS, THE ABOVE SCALES MAY BE USED.

J.U.L.I.E.  
 JOINT UTILITY LOCATION INFORMATION FOR EXCAVATION  
 1-800-892-0123  
 OR 811



PROJECT ENGINEER: REBECCA MARRUFFO  
 PROJECT MANAGER: ED CONDERMAN (815)-284-5947  
 HAMPTON TOWNSHIP, SECTION 10, 11, 14  
 CONTRACT NO. 64D34

NET LENGTH OF IMPROVEMENT = 11,477 FEET = 2.17 MILES  
 GROSS LENGTH OF IMPROVEMENT = 11,827 FEET = 2.24 MILES

STATE OF ILLINOIS  
 DEPARTMENT OF TRANSPORTATION  
 DIVISION OF HIGHWAYS

SUBMITTED May 15 20 08  
John S. Ryan  
 DEPUTY DIRECTOR OF HIGHWAYS, REGION ENGINEER

June 27, 20 08  
Eric E. Abramo  
 ENGINEER OF DESIGN AND ENVIRONMENT

June 27, 20 08  
Christine M. Reed  
 DIRECTOR OF HIGHWAYS, CHIEF ENGINEER

**PRINTED BY THE AUTHORITY  
 OF THE STATE OF ILLINOIS**