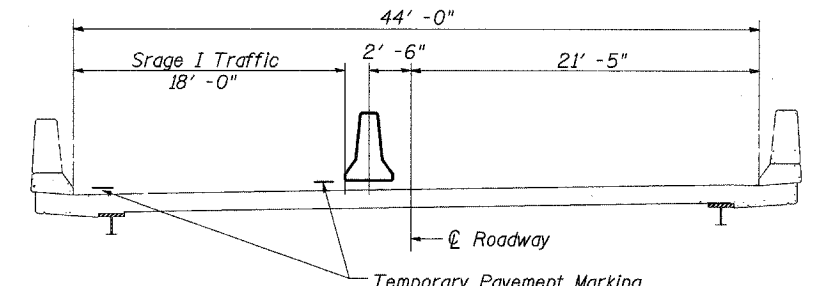


Traffic Control Plan

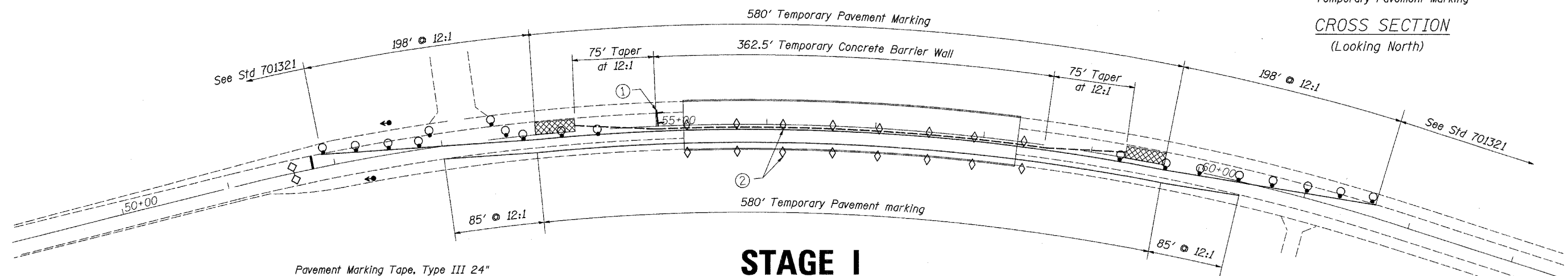
Location 1

Structure Number 008-0028

Refer to Standard 701321 for additional details



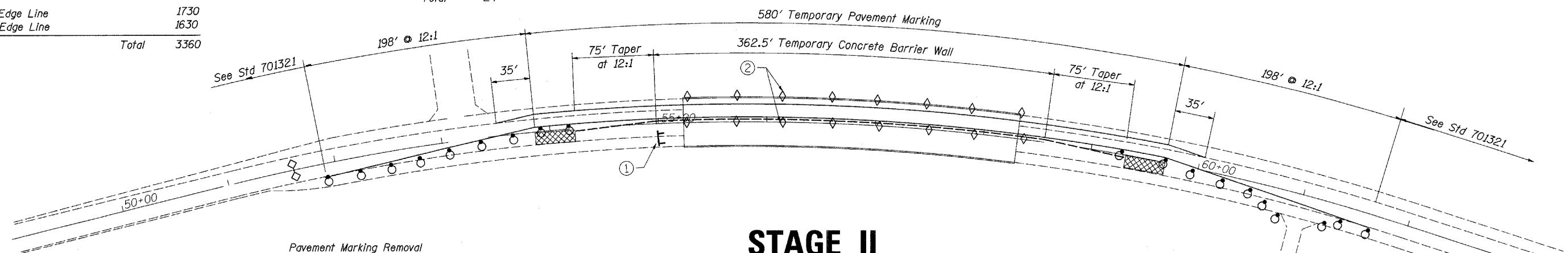
CROSS SECTION
(Looking North)



STAGE I

Pavement Marking Tape, Type III 4"	Foot
Stage I Edge Line	1730
Stage II Edge Line	1630
Total	3360

Pavement Marking Tape, Type III 24"	Foot
Stop Bars	24
Total	24



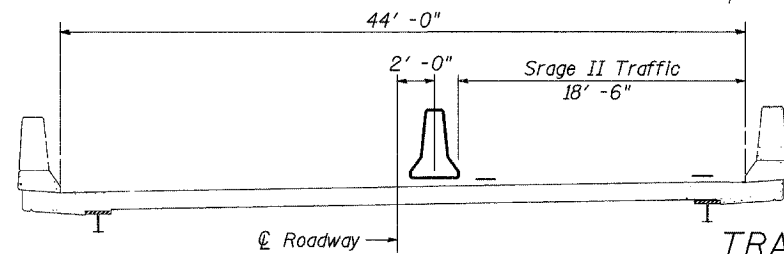
STAGE II

Temporary Concrete Barrier	Foot
Stage I	512.5
Total	512.5
Relocate Temporary Concrete Barrier	Foot
Stage II	512.5
Temporary Storage	512.5
Total	1025

Pavement Marking Removal	Sq. Ft.
Stage I	750
Total	750
Work Zone Pavement Marking Removal	Sq. Ft.
Stage I Temporary Lines	575
Stage II	550
Total	1125

Paint Pavement Marking - Line 4"	Foot
Stp Bar to Stop Bar	1600
Edge Lines	1100
Total	2700

Short Term Pavement Marking 4"	Foot
Temporary Centerline Skip Dash	240
and Solid Yellow	720
Total	960



CROSS SECTION
(Looking North)

TRAFFIC CONTROL PLAN
IL 84 OVER PLUM CREEK
VARIOUS ROUTES
SECTION (106BR)M, (4B-2)M & (177-4B-3)M
VARIOUS COUNTIES
STRUCTURE NUMBER 008-0028

- ① Type III barricade to be placed when no work is being performed.
- ② Barrier wall/guardrail markers at 7.6 m (25') cts. See Standards 704001 & 635011.

* Various
** (106BR)M, (4B-2)M & 177-4B-3)M

FILE NAME =	USER NAME = linkdj	DESIGNED -	REVISED -	STATE OF ILLINOIS	Traffic Control Plan	F.A. RTE.	SECTION	COUNTY	TOTAL SHEETS	SHEET NO.
D:\BRV\CADD plans\Various Counties\Contract #64D99 2008 expansion joints\0080028.dgn				DEPARTMENT OF TRANSPORTATION		*	**	Various	26	4
PLOT SCALE = 58.0000' / IN.						ILLINOIS CONTRACT NO. 64D99				
PLOT DATE = Sat Mar 15 11:13:19 2008						FED. ROAD DIST. NO. ILLINOIS FED. AID PROJECT				