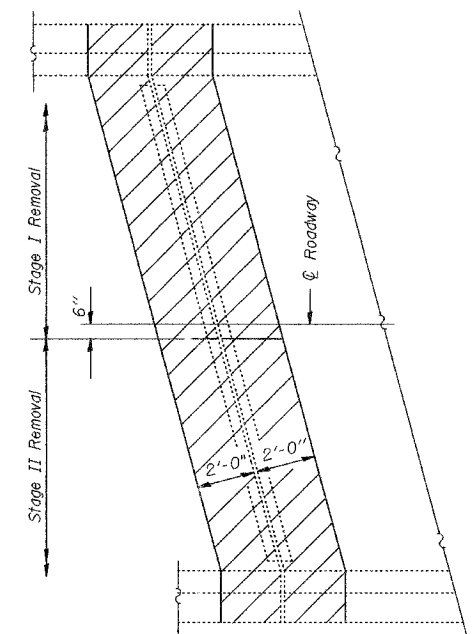
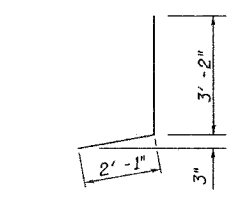


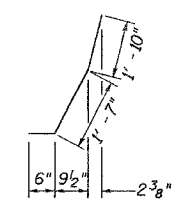
EXISTING PARTIAL PLAN
(At Abutments)



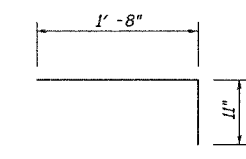
EXISTING PARTIAL PLAN
(At Pier 3)



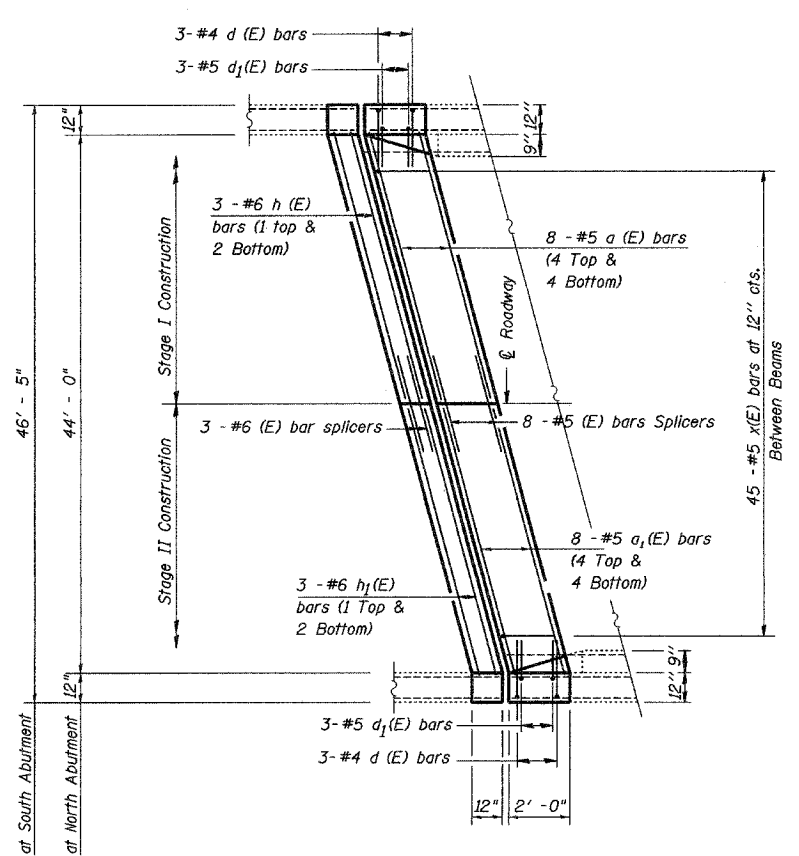
#4 d (E) BAR



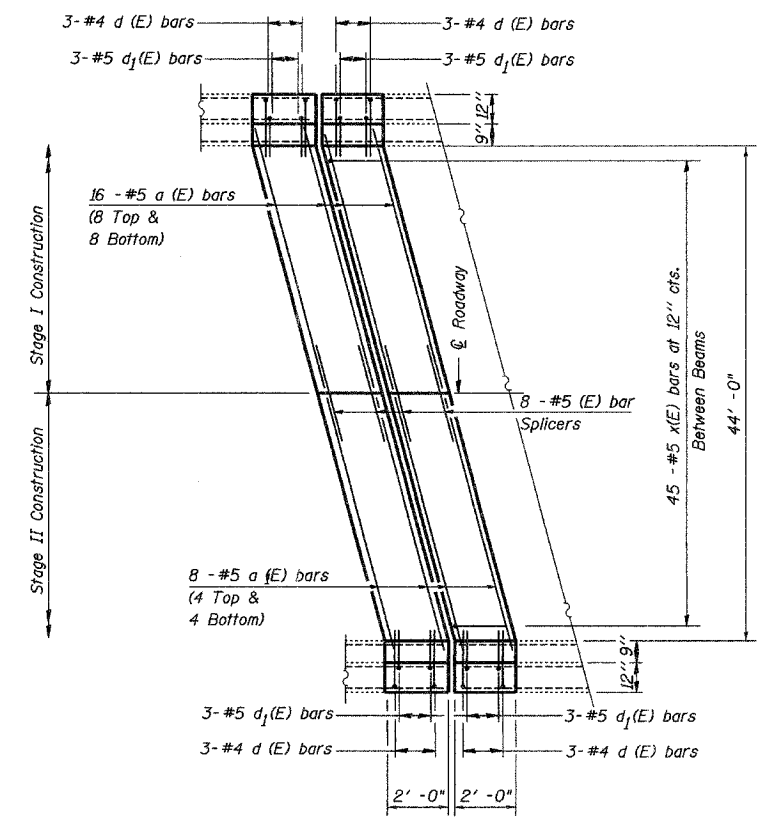
#5 d₁ (E) BAR



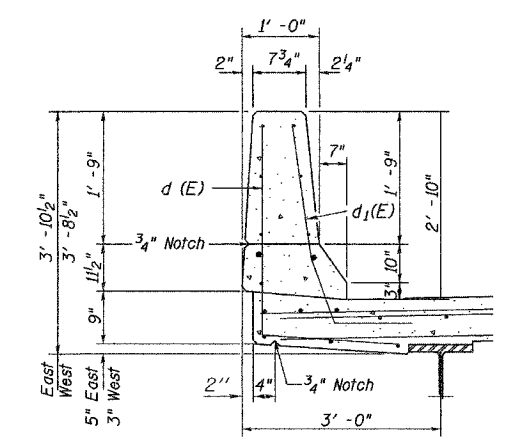
#5 x (E) BAR



PROPOSED PARTIAL PLAN
(At Abutment)



PROPOSED PARTIAL PLAN
(At Pier 3)



TYPICAL SECTION THRU PARAPET

* = Existing Reinforcement

JOINT DETAILS
IL 84 OVER PLUM RIVER
FA ROUTE 18 (IL 84)
SECTION 106BR
CARROLL COUNTY
STRUCTURE NUMBER 008-0028

* Various
** (106BR)M, (4B-2)M & 177-4B-3)M

FILE NAME = #FILEL*	USER NAME = #USER*	DESIGNED -	REVISED -	STATE OF ILLINOIS DEPARTMENT OF TRANSPORTATION	Joint Details		F.A. RTE.	SECTION	COUNTY	TOTAL SHEETS	SHEET NO.		
		DRAWN -	REVISED -		SCALE: None	SHEET NO. 4 OF 7 SHEETS	STA.	TO STA.	*	**	Various	26	13
		PLOT SCALE = #SCALE*	REVISED -						ILLINOIS	CONTRACT NO. 64D99			
		PLOT DATE = #DATE*	REVISED -						FED. ROAD DIST. NO.	ILLINOIS FED. AID PROJECT			