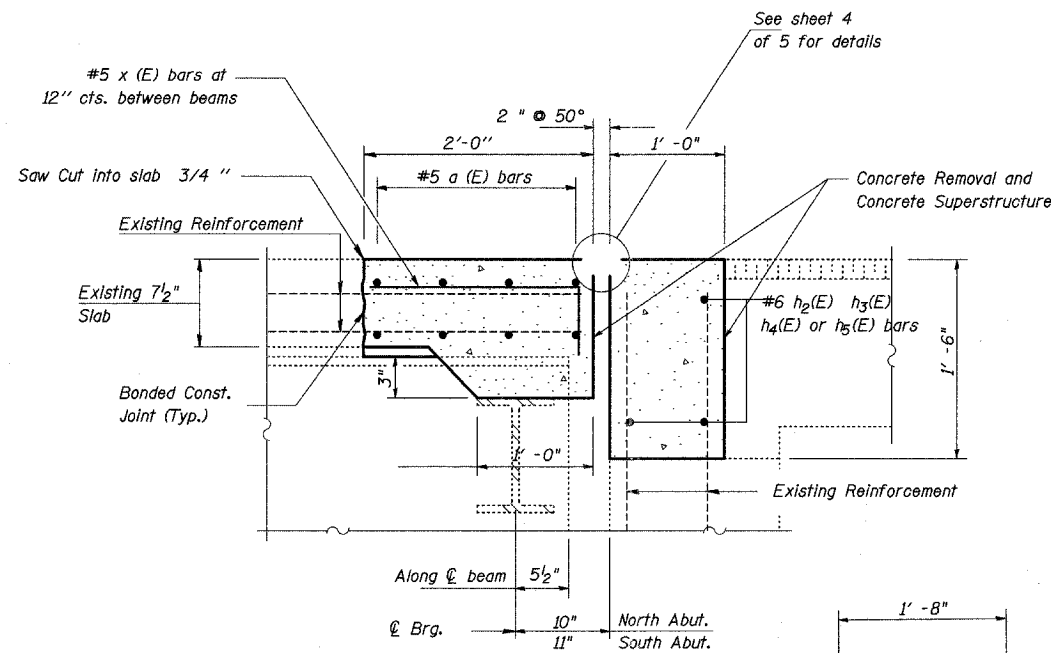


EXISTING PARTIAL PLAN
(South Abutment Shown)



SECTION THRU JOINT
(At Abutments)

#4 d (E) BAR

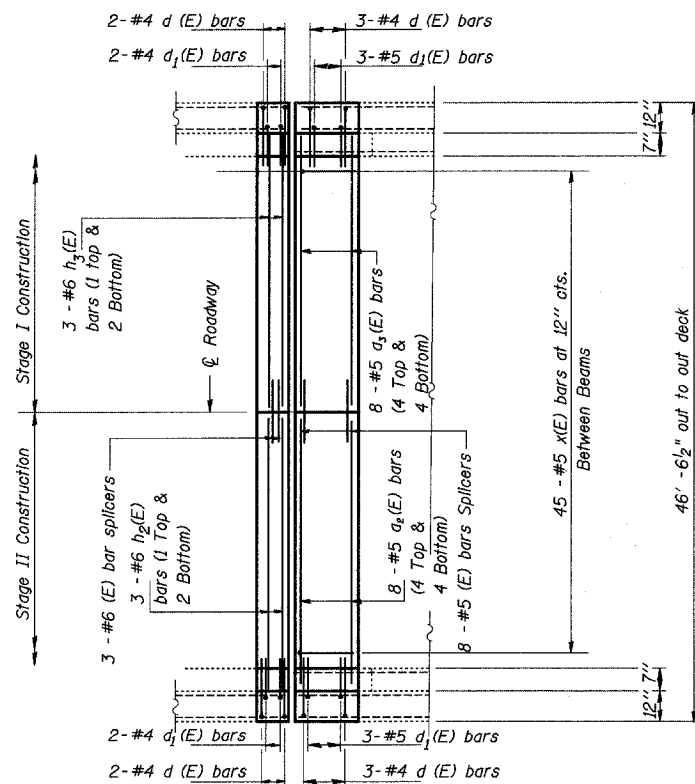
#5 d₁ (E) BAR

#5 x (E) BAR

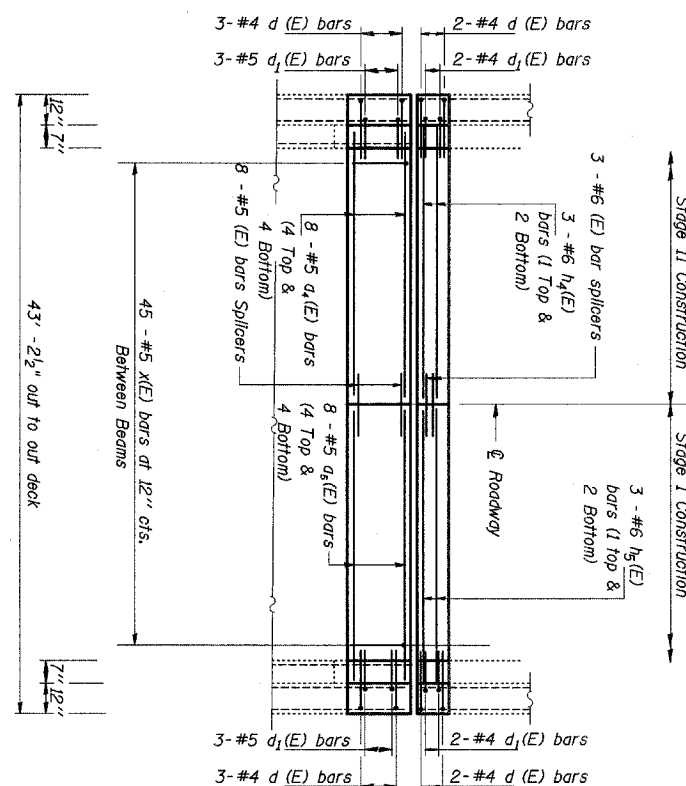
Bill of Material

BAR	NO.	SIZE	LENGTH	SHAPE
a ₂ (E)	8	5	23' - 0"	—
a ₃ (E)	8	5	23' - 4"	—
a ₄ (E)	8	5	22' - 0"	—
a ₅ (E)	8	5	22' - 4"	—
d (E)	20	4	5' - 3"	J
d ₁ (E)	20	5	3' - 11"	J
h ₂ (E)	3	6	21' - 2"	—
h ₃ (E)	3	6	21' - 6"	—
h ₄ (E)	3	6	19' - 5"	—
h ₅ (E)	3	6	18' - 10"	—
x (E)	90	5	2' - 7"	—

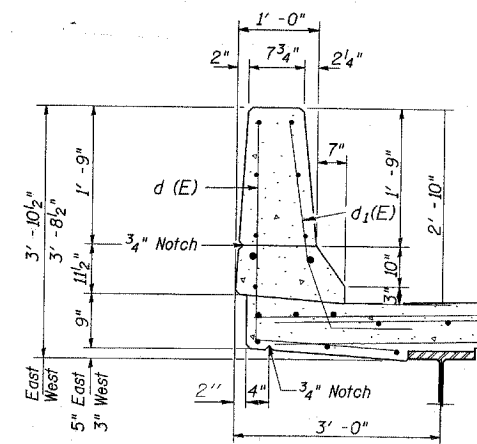
CONCRETE SUPERSTRUCTURE	CU YD	12.0
CONCRETE REMOVAL	CU YD	12.0
REINFORCEMENT BARS, EPOXY COATED	POUND	1,520
PREFORMED JOINT STRIP SEAL	FOOT	90
BAR SPLICERS	EACH	22
REM REIN T B TERM T1	EACH	4



PROPOSED PARTIAL PLAN
(At South Abutment)



PROPOSED PARTIAL PLAN
(At North Abutment)



TYPICAL SECTION THRU PARAPET

JOINT DETAILS
IL 26 OVER BUFFALO CREEK
FA ROUTE 38 (IL 26)
SECTION 4B-2
OGLE COUNTY
STRUCTURE NUMBER 071-0069