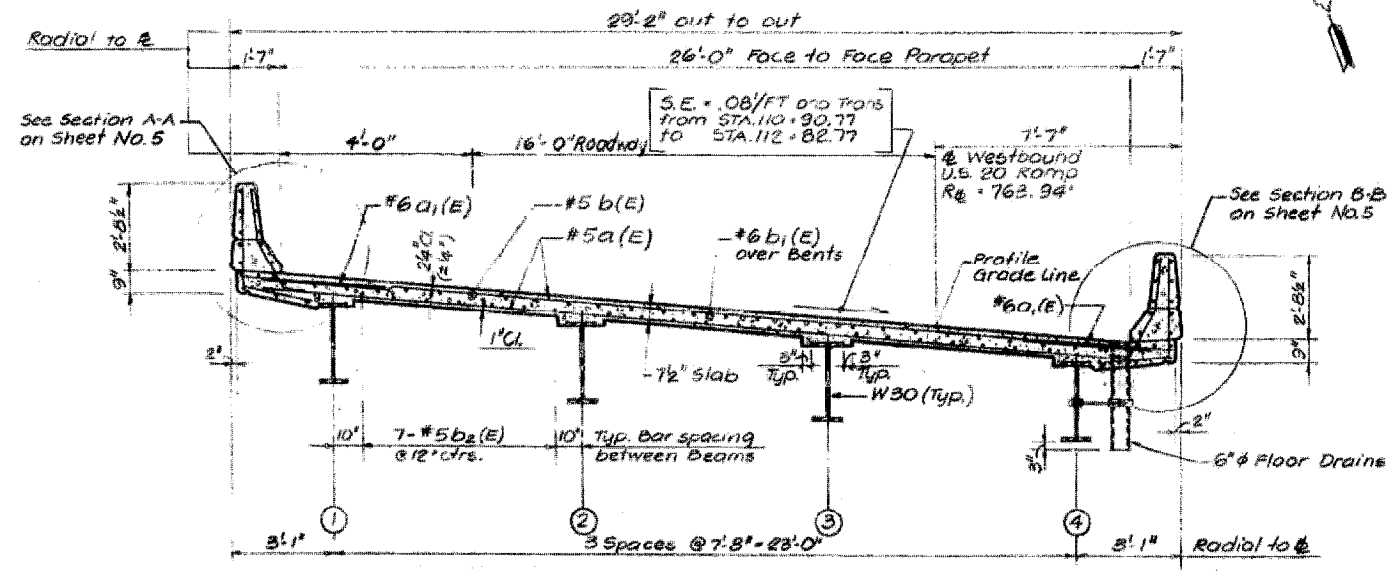
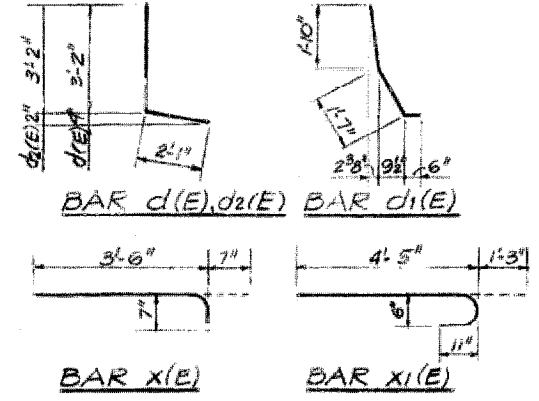


Bars indicated True 27x4-#5 etc. Indicates 27 Lines of Bars with 4 Lengths per Line

DECK PLAN



CROSS SECTION (LOOKING WEST)



Min Lop #5 Bars - 2'-2"

FOR INFORMATION ONLY

DECK PLAN & CROSS-SECTION
 US 20 WB RAMP OVER SILVER CREEK
 FA 401 (US 20)
 SECTION 177-4B-3
 STEPHENSON COUNTY
 STRUCTURE NUMBER 089-0060

* Various
 ** (106BR)M, (4B-2)M & 177-4B-3)M

FILE NAME = O:\BR\CADD plans\Various Counties\Contract #64D99 2808 expansion joints\080828.dgn	USER NAME = linkd	DESIGNED -	REVISED -	STATE OF ILLINOIS DEPARTMENT OF TRANSPORTATION	Existing Deck Plan & Cross Section		F.A. RTE.	SECTION	COUNTY	TOTAL SHEETS	SHEET NO.
	PLOT SCALE = 50.0000' / IN.	CHECKED -	REVISED -				SCALE: None	SHEET NO. 1 OF 5 SHEETS	STA. TO STA.	ILLINOIS	Various
PLOT DATE = Sat Mar 15 11:13:19 2008	DATE -	REVISED -	REVISED -				FED. ROAD DIST. NO.	ILLINOIS FED. AID PROJECT	CONTRACT NO. 64D99		