

F.A.P. RTE.	SECTION	COUNTY	TOTAL SHEETS	SHEET NO.
17	4RS-4	CARROLL	35	1
FED. ROAD DIST. NO.	ILLINOIS	CONTRACT NO. 64E12		

INDEX OF SHEETS

SEE SHEET No. 2

STATE OF ILLINOIS DEPARTMENT OF TRANSPORTATION DIVISION OF HIGHWAYS

PROPOSED HIGHWAY PLANS

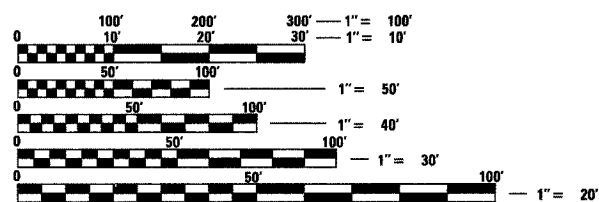
FAP ROUTE 17 (US 52/L 64)
SECTION 4RS-4
PROJECT F-0017(125)
CARROLL COUNTY



STATE STANDARDS

SEE SHEET No. 2

SALEM TOWNSHIP SECTIONS 1,2,3,4,5,8,9,10,11,12
ROCK CREEK TOWNSHIP SECTIONS 5,6,7,8



FULL SIZE PLANS HAVE BEEN PREPARED USING STANDARD ENGINEERING SCALES. REDUCED SIZED PLANS WILL NOT CONFORM TO STANDARD SCALES. IN MAKING MEASUREMENTS ON REDUCED PLANS, THE ABOVE SCALES MAY BE USED.

J.U.L.I.E.
JOINT UTILITY LOCATION INFORMATION FOR EXCAVATION
1-800-892-0123
OR 811

SQUAD LEADERS:
JENNIFER LUBBS (815-284-5958)
FAITH DUNCAN (815-284-5364)
PROJECT ENGINEER: BECKY MARRUFFO
CONTRACT NO. 64E12

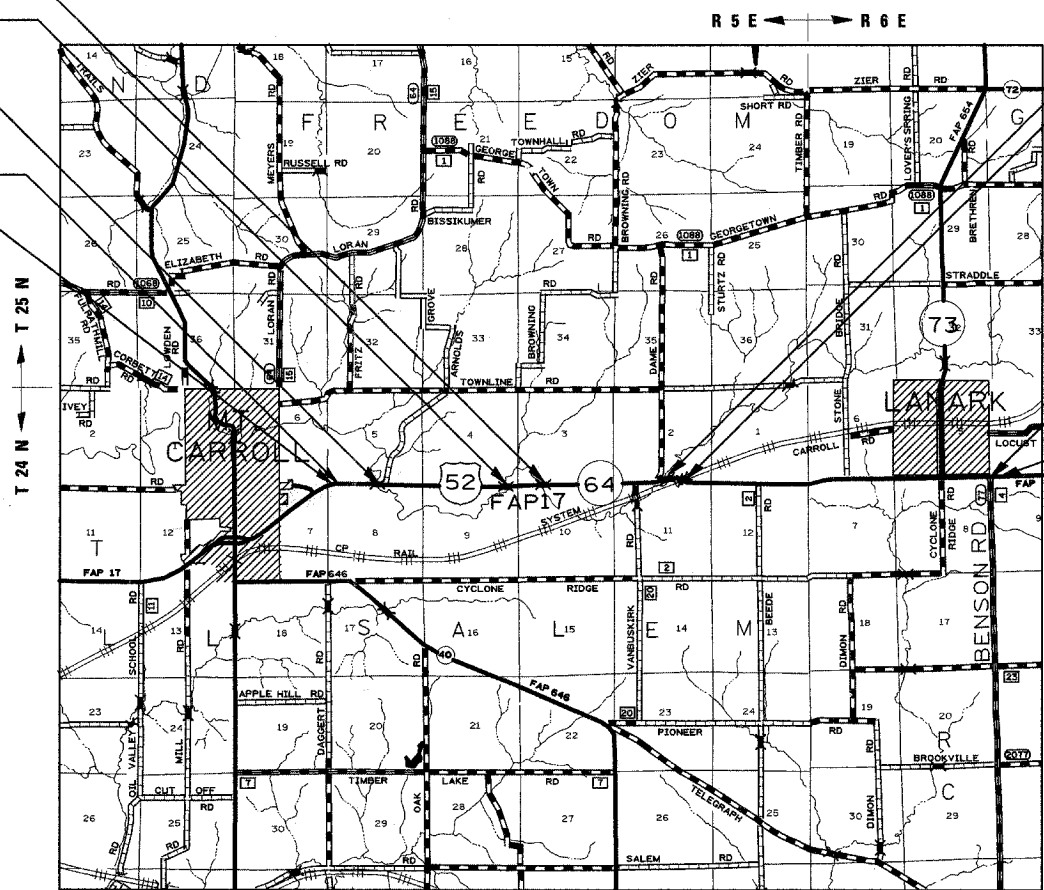
OMISSION (BRIDGE)
STA 762+82 - STA 764+90

OMISSION (BRIDGE)
STA 743+46 - STA 744+60

OMISSION (BRIDGE)
STA 673+72 - STA 674+82

IMPROVEMENT BEGINS
STA 658+28
SECTION BEGINS
STA 658+73

C-92-077-08



OMISSION (BRIDGE)
STA 828+90 - STA 830+55

OMISSION (RAILROAD)
STA 837+48 - STA 840+35

SECTION ENDS
STA 1015+62
IMPROVEMENT ENDS
STA 1016+07

GROSS LENGTH = 35,689 FT. = 6.759 MILE
NET LENGTH = 34,808 FT. = 6.592 MILE

STATE OF ILLINOIS
DEPARTMENT OF TRANSPORTATION
DIVISION OF HIGHWAYS

SUBMITTED 05/16 20 08

George F. Ryan
DEPUTY DIRECTOR OF HIGHWAYS, REGION ENGINEER

June 27, 20 08
Eric E. Neum
ENGINEER OF DESIGN AND ENVIRONMENT

June 27, 20 08
Christine M. Reed
DIRECTOR OF HIGHWAYS, CHIEF ENGINEER

**PRINTED BY THE AUTHORITY
OF THE STATE OF ILLINOIS**