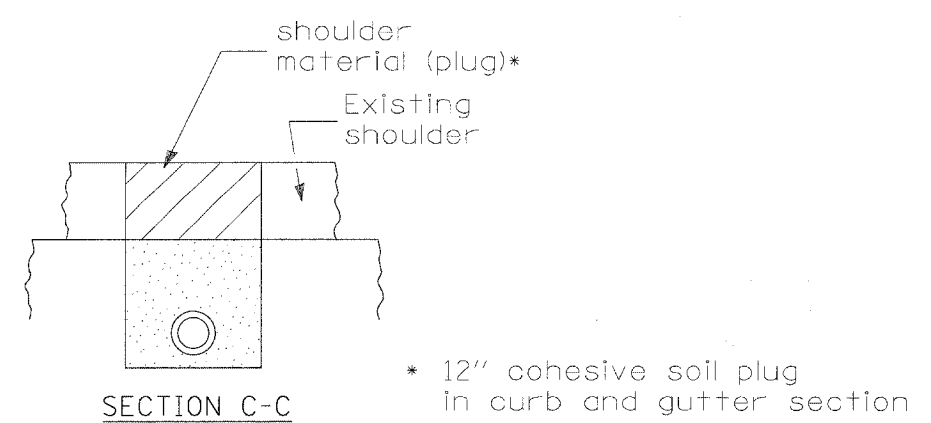
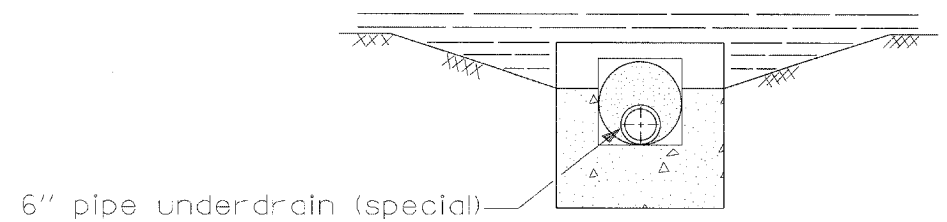
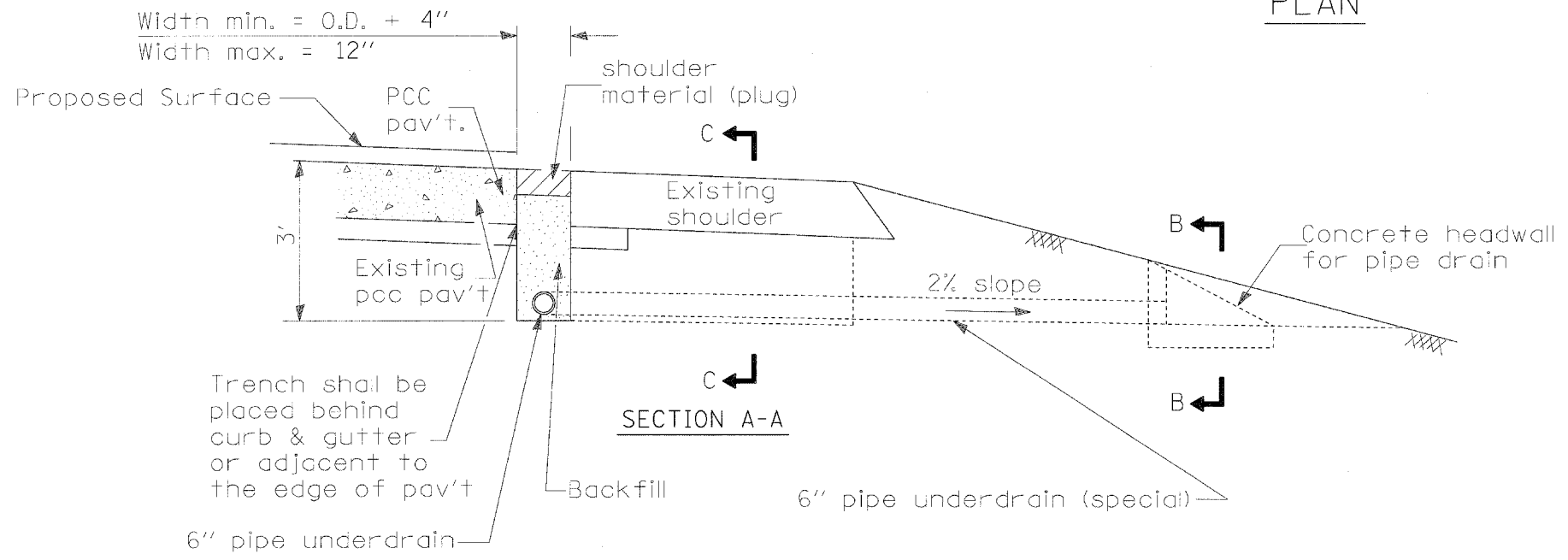
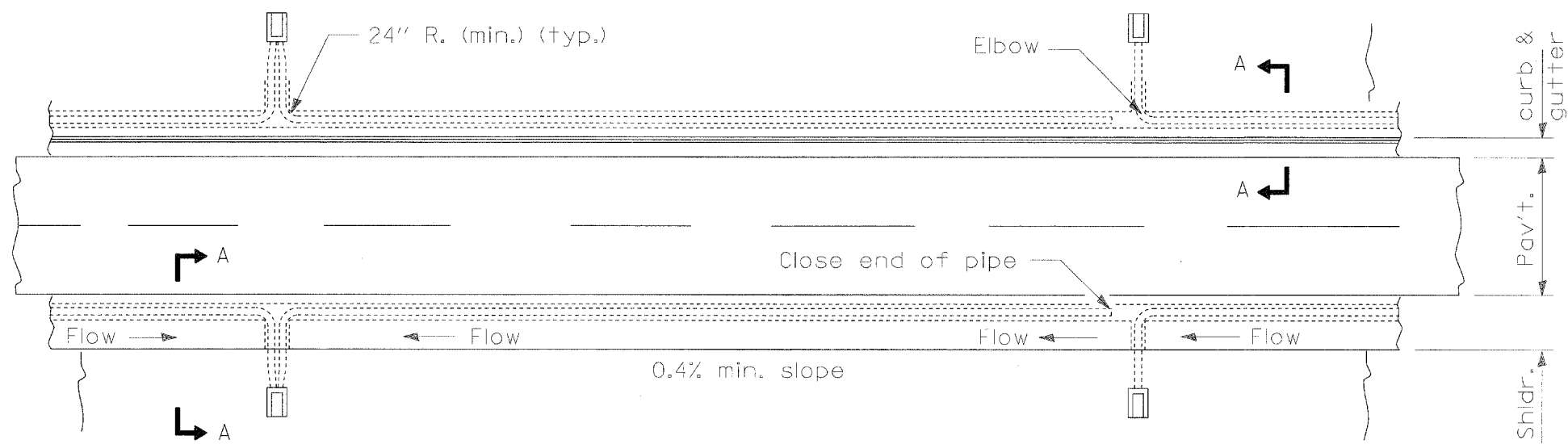


SUB-SURFACE DRAINS DETAIL



GENERAL NOTES

See Standard 601101 for details of concrete headwall.

The 600 mm (24") radius on the drainage fitting is only a minimum. Larger radii meeting the approval of the Engineer maybe substituted.

The contractor shall replace any material removed (such as concrete entrances, aggregate shoulders, concrete siceroads, soil, seeding, backfill, bituminous shoulders and curb & gutter) to install pipe underdrains with the same material.

All cost shall be included in the cost of PIPE UNDERDRAINS 6" and PIPE UNDERDRAINS 6" (SPECIAL).

EXISTING CONSTRUCTION

FILE NAME - c:\projects\p206100\206100std.dgn	USER NAME - dunoanfa	DESIGNED - DRAWN -	REVISED - REVISED - REVISED - REVISED -	STATE OF ILLINOIS DEPARTMENT OF TRANSPORTATION	US 52/L 64 SUB-SURFACE DRAINS DETAIL	F.A.P. RTE. -17-	SECTION 4RS-4	COUNTY CARROLL	TOTAL SHEETS 35	SHEET NO. 28
PLOT SCALE = 50.0000' / IN. PLOT DATE = Fri May 16 10:22:23 2008				SCALE: _____ SHEET NO. 28 OF 35 SHEETS STA. _____ TO STA. _____		FED. ROAD DIST. NO. - [ILLINOIS] FED. AID PROJECT				