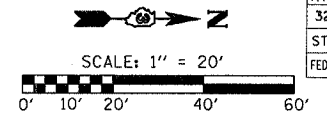


F.A.P. RTE.	SECTION	COUNTY	TOTAL SHEETS	SHEET NO.
326	(111CS) W&RS-21	GRUNDY	85	19
STA. 14+00.00		TO STA. 20+00.00		
FED. ROAD DIST. NO. ILLINOIS FED. AID PROJECT				

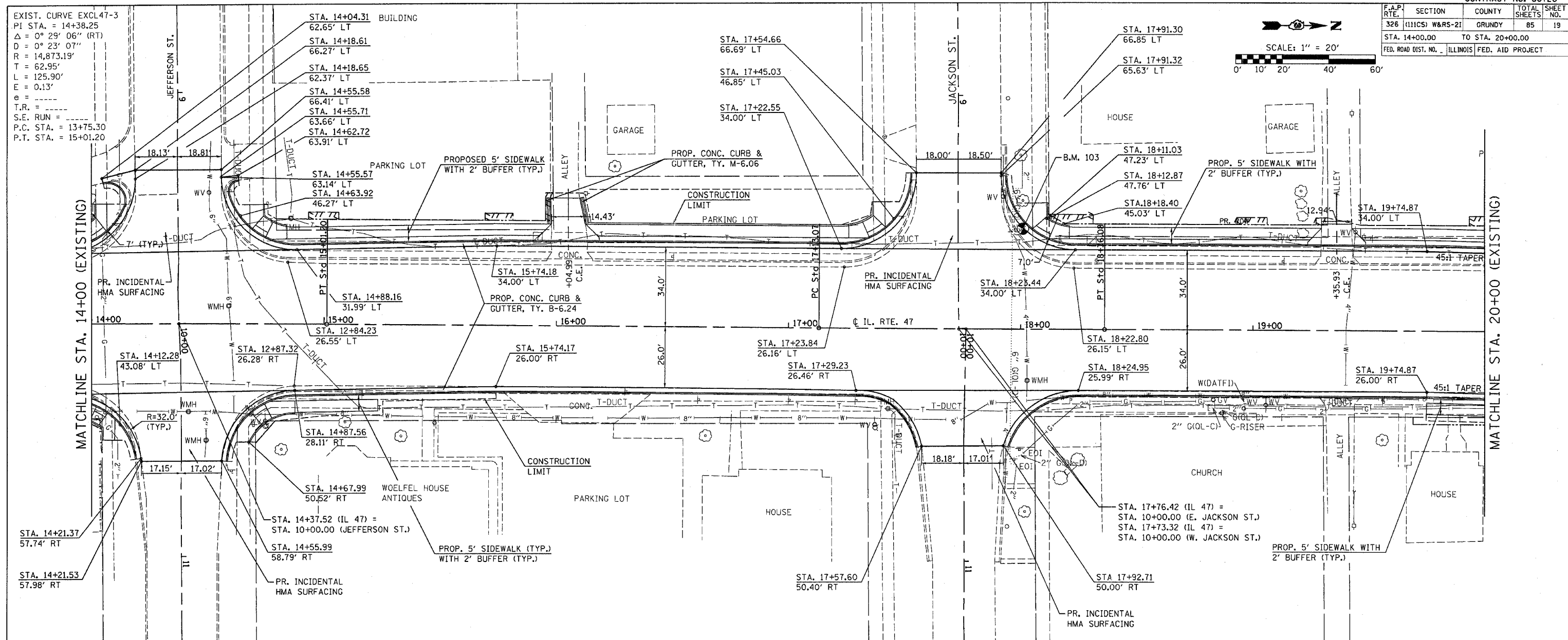


EXIST. CURVE EXCL 47-3  
 PI STA. = 14+38.25  
 $\Delta = 0^\circ 29' 06''$  (RT)  
 $D = 0^\circ 23' 07''$   
 $R = 14,873.19'$   
 $T = 62.95'$   
 $L = 125.90'$   
 $E = 0.13'$   
 $e =$   
 $T.R. =$   
 $S.E. RUN =$   
 $P.C. STA. = 13+75.30$   
 $P.T. STA. = 15+01.20$

DATE	BY	REVISION
		REVISION
		REVISION
		REVISION

DATE	BY	REVISION
		REVISION
		REVISION
		REVISION

PLOT DATE = Feb 07, 2008 - 01:35:18 PM  
 PLOT SCALE = 20.0000' / IN.  
 USER NAME = schwenck



STATION	ELEVATION	STATION	ELEVATION
14+00	523.30	17+00	525.35
14+10	523.53	17+10	525.47
14+20	523.78	17+20	525.60
14+30	523.94	17+30	525.68
14+40	524.09	17+40	525.76
14+50	524.30	17+50	525.80
15+00	524.52	18+00	525.85
15+10	524.73	18+10	525.95
15+20	524.94	18+20	526.04
15+30	525.06	18+30	526.13
15+40	525.17	18+40	526.20
15+50	525.24	18+50	526.28
16+00	525.35	19+00	526.36
16+10	525.47	19+10	
16+20	525.60	19+20	
16+30	525.68	19+30	
16+40	525.76	19+40	
16+50	525.80	19+50	
17+00	525.85	20+00	
17+10	525.95		
17+20	526.04		
17+30	526.13		
17+40	526.20		
17+50	526.28		
18+00	526.36		

IL ROUTE 47 - PLAN & PROFILE SHEETS