

PHASE DESIGNATION DIAGRAM

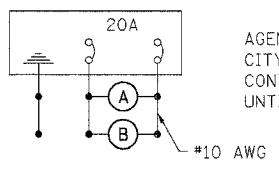
SCHEDULE OF QUANTITIES

DESCRIPTION	UNIT	QUANTITY
SERVICE INSTALLATION, TYPE B	EACH	1
HANDHOLE, PORTLAND CEMENT CONCRETE	EACH	7
DOUBLE HANDHOLE, PORTLAND CEMENT CONCRETE	EACH	1
LUMINAIRE, SODIUM VAPOR, HOR. MOUNT, 250 WATT	EACH	2
FULL-ACTUATED CONTROLLER AND TYPE IV CABINET, SPECIAL	EACH	1
TRANSCEIVER - FIBER OPTIC	EACH	1
TRAFFIC SIGNAL BACKPLATE, LOUVERED, FORMED PLASTIC	EACH	26
INDUCTIVE LOOP DETECTOR	EACH	10
DETECTOR LOOP, TYPE 1	FT.	2240
PEDESTRIAN PUSH-BUTTON	EACH	8
TEMPORARY TRAFFIC SIGNAL INSTALLATION	EACH	1
REMOVE EXISTING TRAFFIC SIGNAL EQUIPMENT	EACH	1
REMOVE EXISTING HANDHOLE	EACH	7
REMOVE EXISTING CONCRETE FOUNDATION	EACH	11
SIGN PANEL - TYPE 1	SQ.FT.	16
SIGN PANEL - TYPE 2	SQ.FT.	42.5
CONDUIT IN TRENCH 1 IN. DIA., PVC	FT.	310
CONDUIT IN TRENCH 2 IN. DIA., PVC	FT.	186
CONDUIT IN TRENCH 3 IN. DIA., PVC	FT.	120
CONDUIT IN TRENCH 4 IN. DIA., PVC	FT.	16
CONDUIT PUSHED, 2 IN. DIA., PVC	FT.	252
CONDUIT PUSHED, 4 IN. DIA., GALVANIZED STEEL	FT.	343
TRENCH AND BACKFILL FOR ELECTRICAL WORK	FT.	684
ELECTRIC CABLE IN CONDUIT, 600V (XLP-TYPE USE) 1/C NO. 10	FT.	1420
ELECTRIC CABLE IN CONDUIT, 600V (EPR-TYPE RHW) 1/C NO. 6 GROUND	FT.	238
ELECTRIC CABLE IN CONDUIT, SIGNAL NO. 14 2/C	FT.	1810
ELECTRIC CABLE IN CONDUIT, SIGNAL NO. 14 3/C	FT.	1866
ELECTRIC CABLE IN CONDUIT, SIGNAL NO. 14 5/C	FT.	2786
ELECTRIC CABLE IN CONDUIT, SIGNAL NO. 14 7/C	FT.	1144
ELECTRIC CABLE IN CONDUIT, LEAD-IN, NO. 14, 1-PAIR	FT.	2045
ELECTRIC CABLE IN CONDUIT, SERVICE, NO. 6 2C	FT.	45
TRAFFIC SIGNAL POST, GALVANIZED STEEL, 14 FT.	EACH	2
TRAFFIC SIGNAL POST, GALVANIZED STEEL, 16 FT.	EACH	1
STEEL MAST ARM ASSEMBLY AND POLE 40 FT.	EACH	1
STEEL MAST ARM ASSEMBLY AND POLE 48 FT.	EACH	1
STEEL COMBINATION MAST ARM ASSEMBLY AND POLE 55 FT.	EACH	2
CONCRETE FOUNDATION, TYPE A	FT.	9
CONCRETE FOUNDATION, TYPE C	FT.	4
CONCRETE FOUNDATION, TYPE E, 30 IN. DIAMETER	FT.	45
LIGHTING CONTROLLER, SPECIAL	EACH	1
SIGNAL HEAD, POLYCARBONATE, LED, 1-FACE, 3-SECTION, BRACKET MOUNTED	EACH	6
SIGNAL HEAD, POLYCARBONATE, LED, 1-FACE, 3-SECTION, MAST ARM MOUNTED	EACH	8
SIGNAL HEAD, POLYCARBONATE, LED, 1-FACE, 5-SECTION, BRACKET MOUNTED	EACH	2
SIGNAL HEAD, POLYCARBONATE, LED, 1-FACE, 5-SECTION, MAST ARM MOUNTED	EACH	2
PEDESTRIAN SIGNAL HEAD, POLYCARBONATE, LED, 1-FACE, BRACKET MOUNTED	EACH	8
UNINTERRUPTIBLE POWER SUPPLY	EACH	1
MODIFY EXISTING CONTROLLER CABINET	EACH	1
LIGHT DETECTOR	EACH	4
LIGHT DETECTOR AMPLIFIER	EACH	1
ELECTRIC CABLE IN CONDUIT NO. 20, 3/C, TWISTED, SHIELDED	FOOT	2704

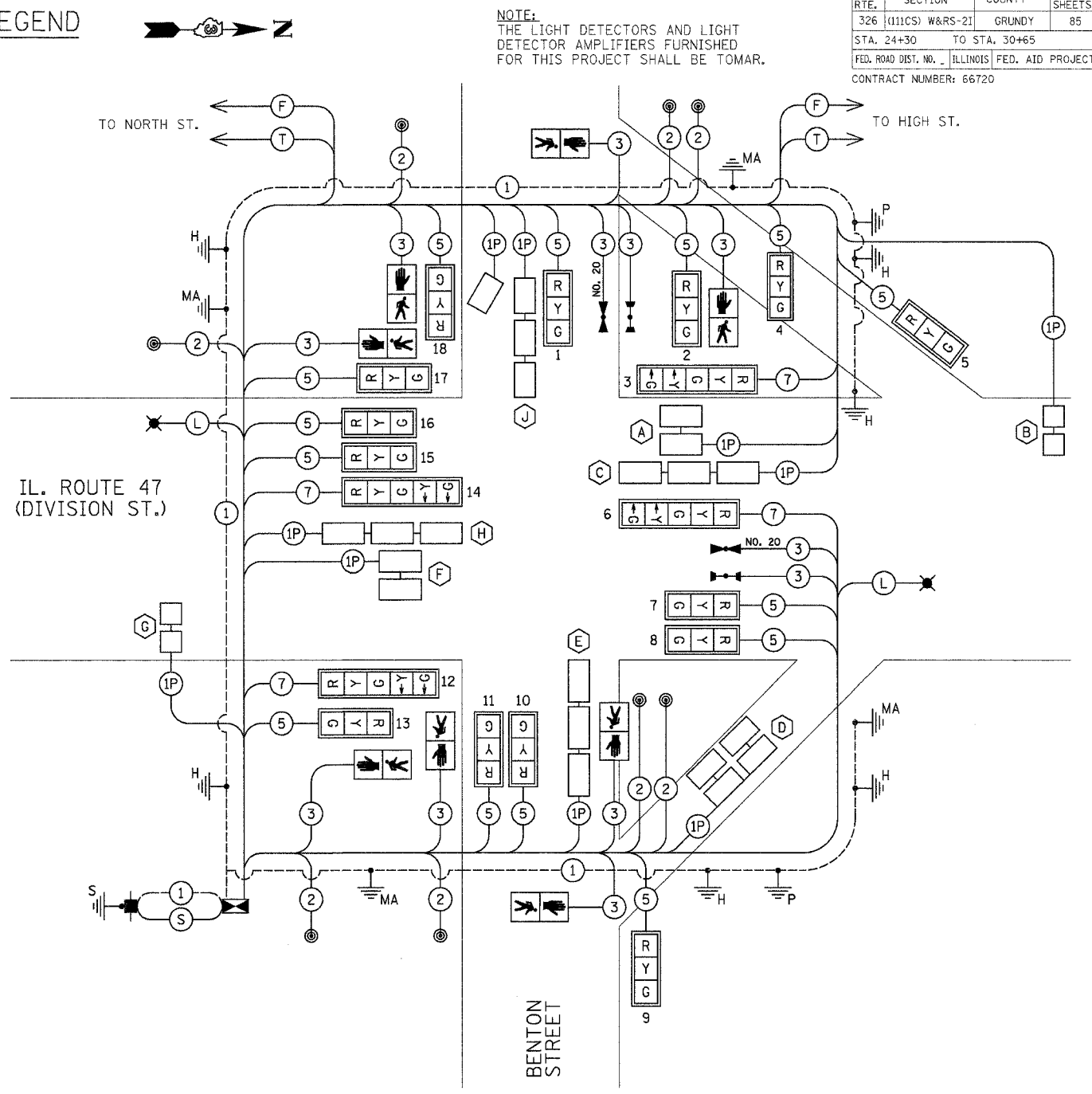
PROPOSED CABLE DIAGRAM LEGEND

- CONTROLLER AND CABINET
- SERVICE INSTALLATION
- TRAFFIC SIGNAL HEAD WITH BACKPLATE
- DENOTES NUMBER OF CONDUCTORS
- LUMINAIRE, SODIUM VAPOR, 250 WATT
- PEDESTRIAN SIGNAL HEAD
- PEDESTRIAN PUSH BUTTON
- DETECTOR LOOP
- GROUND ROD AT HANDHOLE OR DOUBLE HANDHOLE
- GROUND ROD AT POST (P) OR MAST ARM POLE (MA)
- GROUND ROD AT ELECTRIC SERVICE INSTALLATION

- INTERCONNECTION CABLE**
- (F) FIBER OPTIC CABLE 12 FIBER MULTIMODE AND 12 FIBER SINGLE MODE
- (T) TRACER CABLE NO. 14 1C
- SERVICE CABLE**
- ELECTRIC CABLE IN CONDUIT, SERVICE, NO. 6 2C
- LIGHTING CABLE**
- 600V (XLP-TYPE USE) 3 - 1/C NO.10



LIGHTING CIRCUIT DIAGRAM



CABLE DIAGRAM

CONTROLLER SPECIFIED: EAGLE EPAC

AGENCY RESPONSIBLE FOR ENERGY CHARGES:  
CITY OF MORRIS  
CONTRACTOR PAYS ALL ENERGY CHARGES  
UNTIL PROJECT IS ACCEPTED

REVISIONS	
NAME	DATE

ILLINOIS DEPARTMENT OF TRANSPORTATION  
PHASE DIAGRAM, CABLE DIAGRAM  
SCHEDULE OF QUANTITIES  
IL. 47 (DIVISION ST.) / BENTON ST.  
SCALE: NONE  
DATE: JANUARY 2008  
DRAWN BY: JVR  
CHECKED BY: FML

\\pase21\pase21\pase21\pase21.dgn 3/17/2008 5:14:37 PM