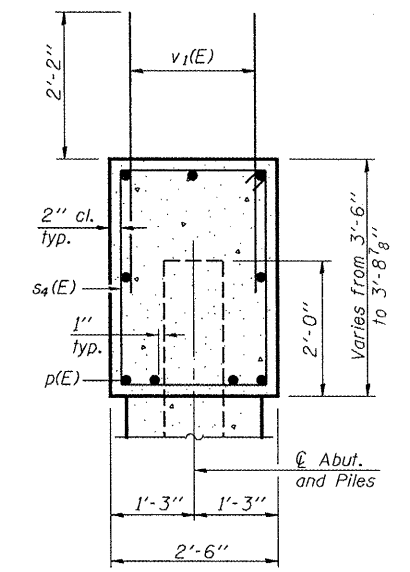
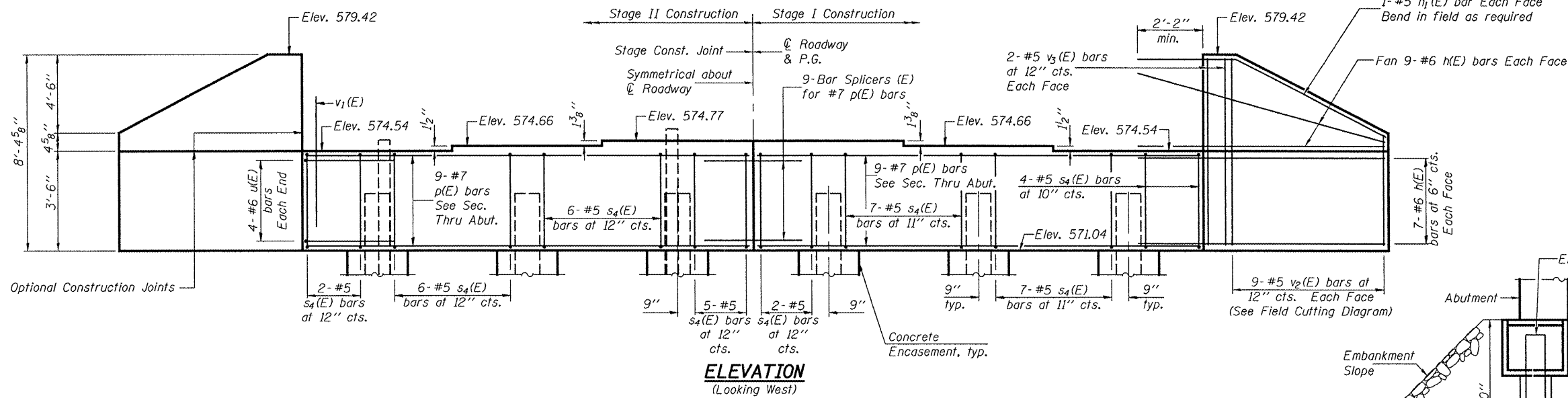


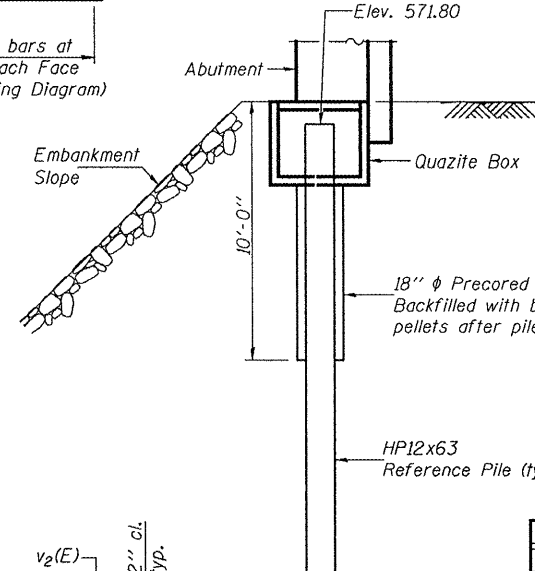
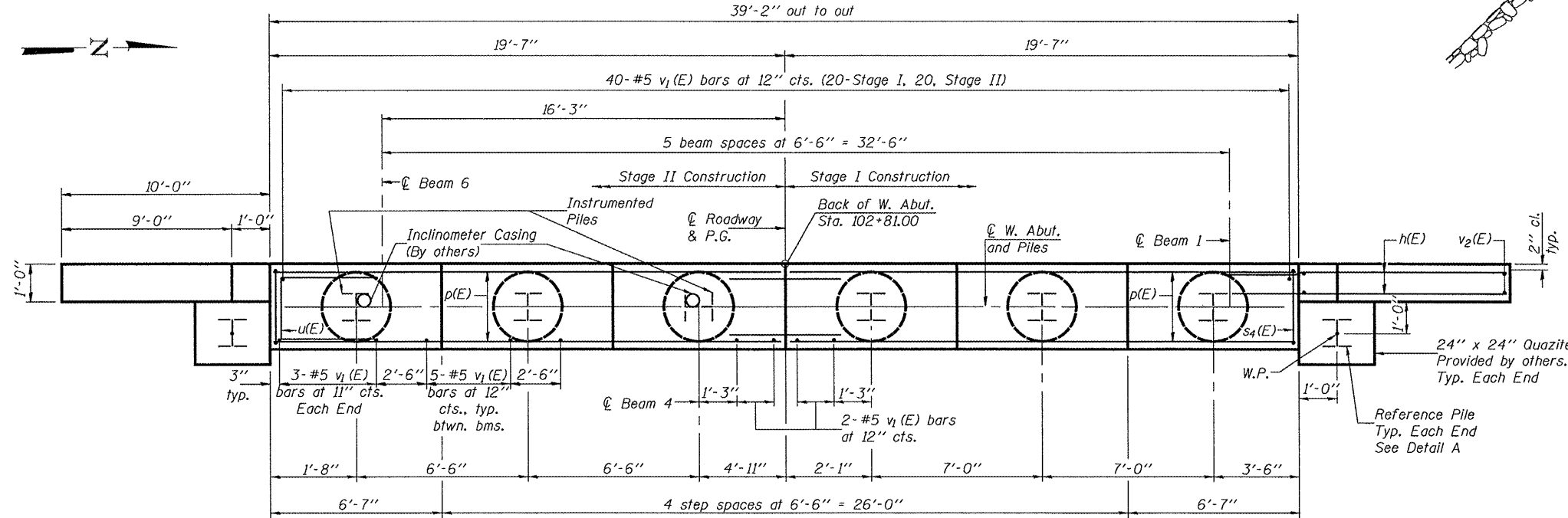
Notes: Four steps monolithically with cap.

STATE OF ILLINOIS  
DEPARTMENT OF TRANSPORTATION

ROUTE NO.	SECTION	COUNTY	SHEET	SHEET NO.
FAP 769	110B-2	MACOUPIN	98 67	38 SHEETS
FED. ROAD DIST. NO. 7	ILLINOIS	FED. AID PROJECT	Contract #72813	



SEC. THRU ABUT.



DETAIL A

See Special Provision, for Instrumented Piles.

BILL OF MATERIAL

Bar No.	Size	Length	Shape
h(E)	64	#6	13'-0"
h1(E)	4	#5	13'-3"
p(E)	18	#7	19'-4"
s4(E)	39	#5	11'-7"
u(E)	8	#6	8'-1"
v1(E)	70	#5	4'-4"
v2(E)	18	#5	11'-8"
v3(E)	8	#5	8'-1"
Structure Excavation	Cu. Yd.	196.8	
Concrete Structures	Cu. Yd.	17.8	
Reinforcement Bars, Epoxy Coated	Pound	3190	
Furnishing Steel Piles, HP12x63	Foot	238.0	
Bar Splicers (E)	Each	9	
Driving Piles	Foot	238.0	
Test Pile, HP12x63	Each	1	
Concrete Encasement	Cu. Yd.	2.1	
Pile Shoes	Each	8	

For details of Bar Splicers, see sheet 33 of 38.  
For details of piles and Concrete Encasement, see sheet 32 of 38.

WEST ABUTMENT  
F.A.P. ROUTE 769 - SEC. 110B-2  
MACOUPIN COUNTY  
STATION 104+41.00  
STRUCTURE NO. 059-0509

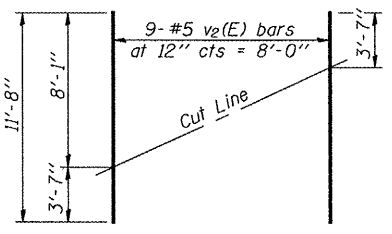
PILE DATA

Type: HP12x63  
Nominal Required Bearing: 497 kips  
Factored Resistance Available: 248 kips  
Est. Length: 34'-0"  
No. Production Piles: 5  
No. Test Piles: 1  
No. Reference Piles: 2

DESIGNED	Tom Kurtenbach
CHECKED	Jay Edwards
DRAWN	BECKY M. LEACH
CHECKED	TK/JE

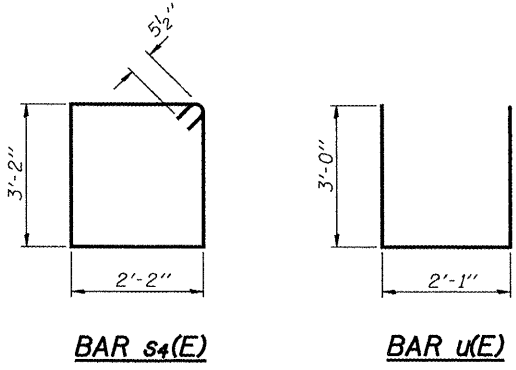
JUNE 17, 2008  
EXAMINED *Thomas J. Domagala*  
PASSED *Robert L. Anderson*  
ENGINEER OF BRIDGES AND STRUCTURES

PLAN



FIELD CUTTING DIAGRAM

Order v2(E) full length. Cut as shown and use remainder of bars in opposite face.



BAR s4(E)

BAR u(E)