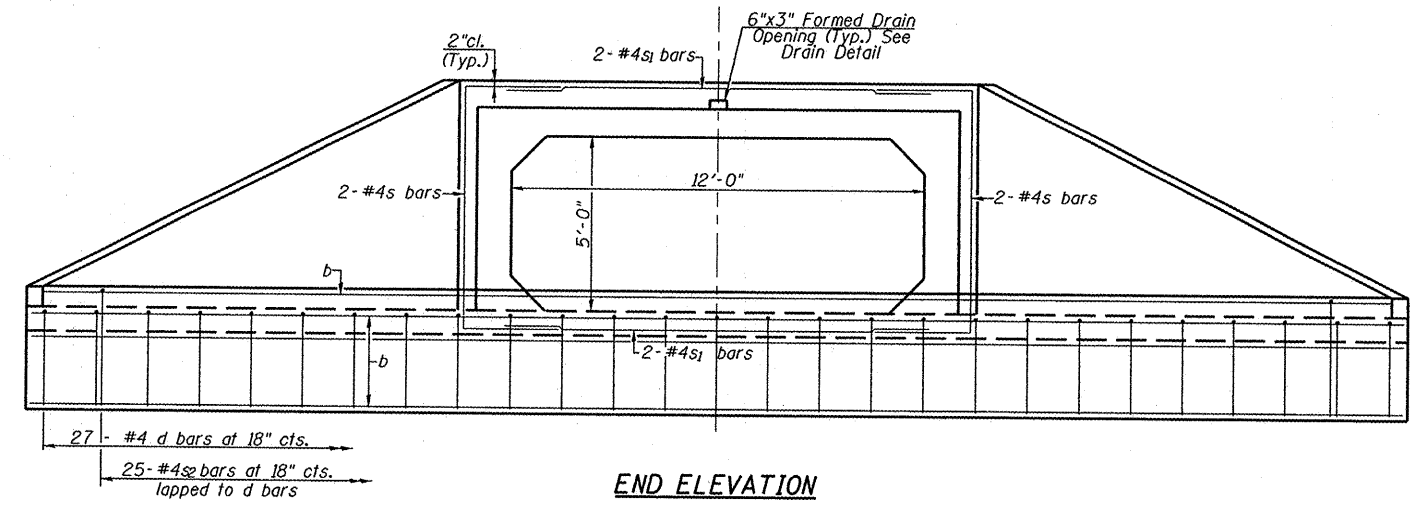
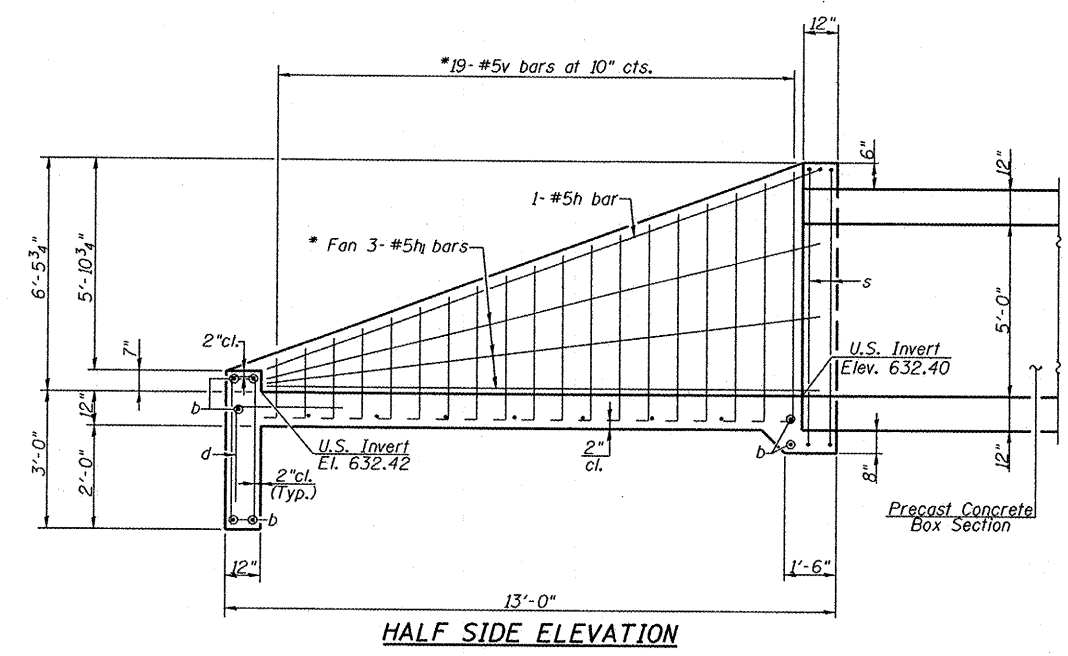


ROUTE NO.	SECTION	COUNTY	TOTAL SHEETS	SHEET NO.	SHEET NO. 2
F.A.S. 1613	23B	SANGAMON	19	11	4 SHEETS
FED. ROAD DIST. NO. 7	ILLINOIS	FED. AID PROJECT			

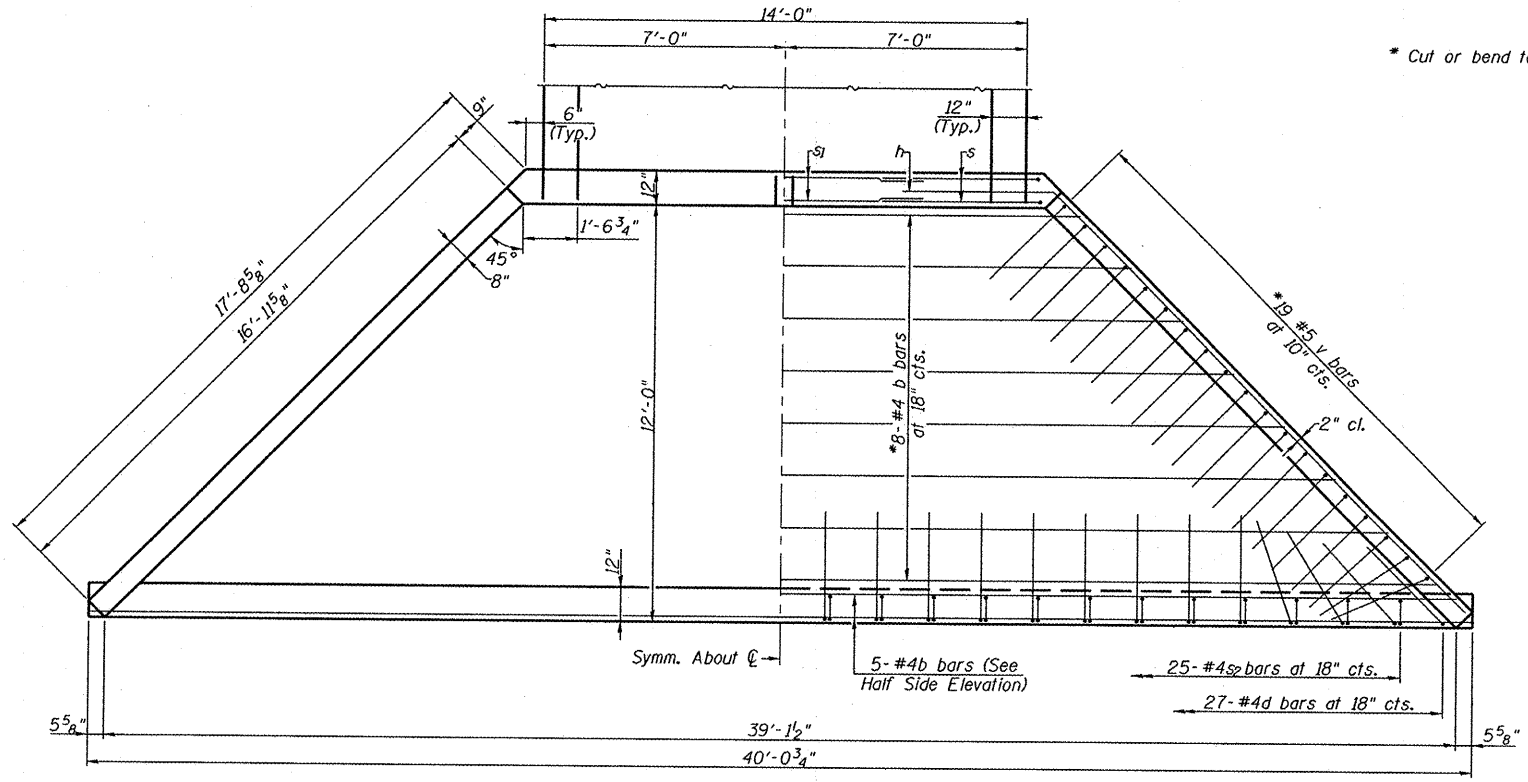
Contract # 72B44



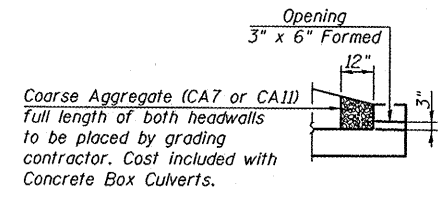
**END ELEVATION**



**HALF SIDE ELEVATION**



**END PLAN**

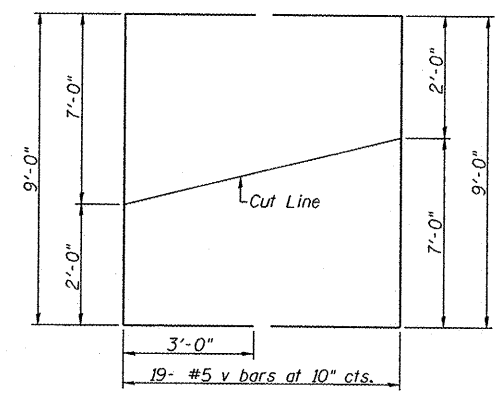
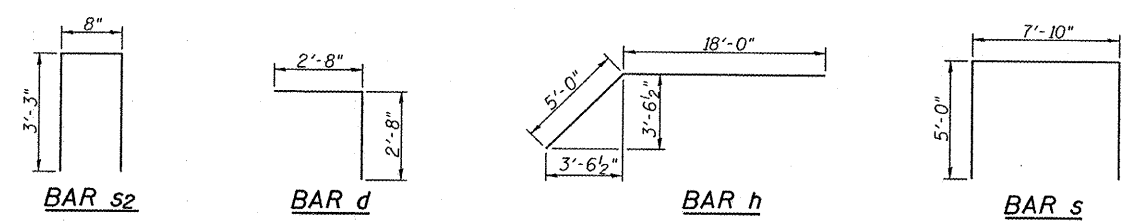


**DRAIN DETAIL**

**BILL OF MATERIAL**

Bar	No.	Size	Length	Shape
b	13	#4	39'-8"	—
d	27	#4	5'-4"	┌
h	2	#5	23'-0"	┌
h1	6	#5	18'-0"	—
s	4	#4	17'-10"	┌
s1	4	#4	9'-0"	—
s2	25	#4	7'-2"	┌
v	19	#5	15'-0"	┌
Concrete Box Culverts			Cu. Yd.	21.5
Reinforcement Bars			Pound	1090

**Min. Bar Lap**  
#4 = 1'-8"



**BAR v CUT DIAGRAM**

Note: Order bars full length. Lay out in field as shown. Cut along cut line. Use remainder of v in opposite wing wall.

**CULVERT DETAILS**  
(SOUTH END SECTION)  
OLD U.S. 136 OVER UNNAMED  
TRIBUTARY OF SPRING CREEK  
F.A.S. ROUTE 1613 - SECTION 23B  
SANGAMON COUNTY  
STA. 639+70.00  
S.N. 084-7132