

STATE OF ILLINOIS
DEPARTMENT OF TRANSPORTATION
DIVISION OF HIGHWAYS
PROPOSED
HIGHWAY PLANS

F.A.P. RTE.	SECTION	COUNTY	TOTAL SHEETS	SHEET NO.
315	23RS-2	HANCOCK	15	1
FED. ROAD DIST. NO.	ILLINOIS	CONTRACT NO. 72C31		

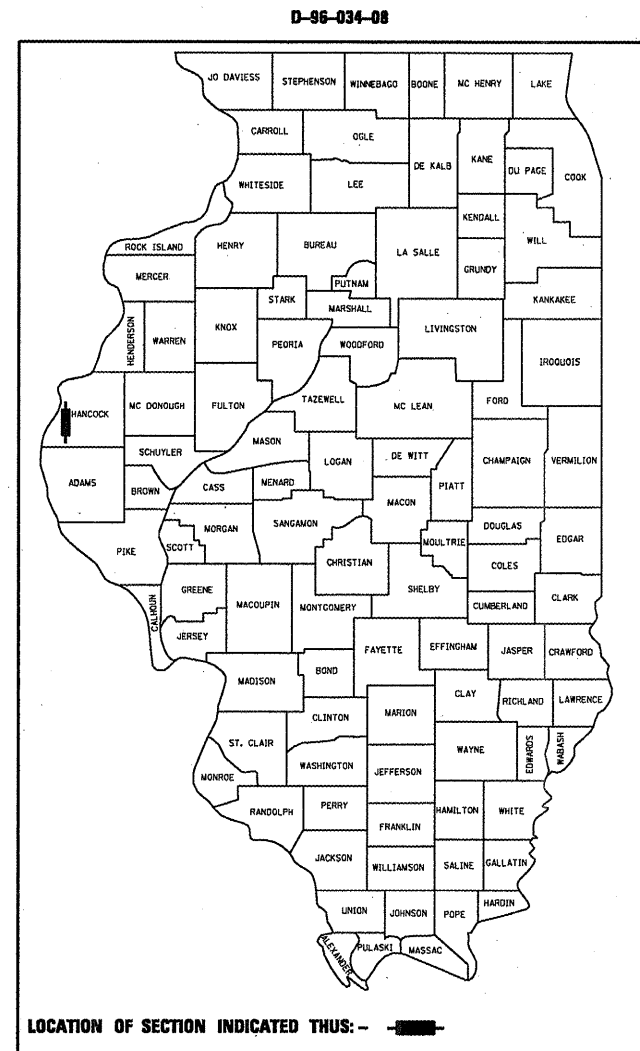
72C31

INDEX OF SHEETS

- 1 COVER SHEET
- 2 GENERAL NOTES AND HIGHWAY STANDARDS
- 3-4 SUMMARY OF QUANTITIES
- 5-6 SCHEDULE OF QUANTITIES
- 7-8 TYPICAL SECTIONS
- 9-15 PLAN VIEW

15A, 15B EXPANSION JOINT DETAILS

FAP ROUTE 315 (US 136)
SECTION 23RS-2
PROJECT
HANCOCK COUNTY
C-96-005-09

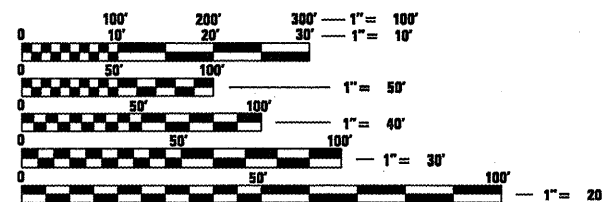


BEGIN IMPROVEMENT
STA 97+13

END IMPROVEMENT
STA 137+50

BRIDGE OMISSION
STA 116+37 TO STA 118+47

AADT = 12,800 (2005)
MU = 350
SU = 600

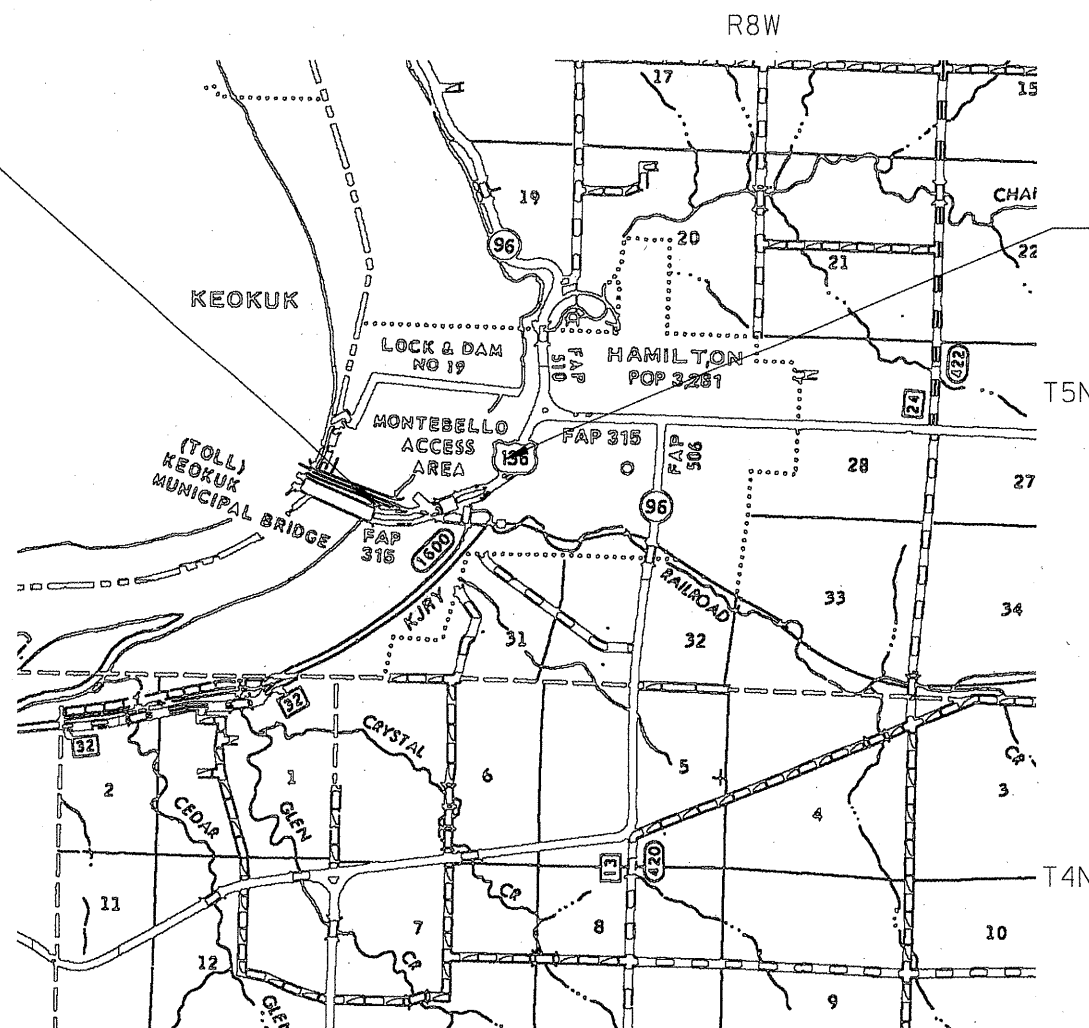


FULL SIZE PLANS HAVE BEEN PREPARED USING STANDARD ENGINEERING SCALES. REDUCED SIZED PLANS WILL NOT CONFORM TO STANDARD SCALES. IN MAKING MEASUREMENTS ON REDUCED PLANS, THE ABOVE SCALES MAY BE USED.

J.U.L.I.E.
 JOINT UTILITY LOCATION INFORMATION FOR EXCAVATION
 1-800-892-0123
 OR 811

PROJECT ENGINEER: JOHN NEGANGARD (217) 782-6990
SQUAD LEADER: VINCE MADONIA (217) 785-9046

CONTRACT NO. 72C31



PROJECT LENGTH = 4037 FT. = 0.76 MILE

Rev. 7-16-08

STATE OF ILLINOIS
 DEPARTMENT OF TRANSPORTATION
 DIVISION OF HIGHWAYS

SUBMITTED July 10 2008
Reginald D. Smith
 DEPUTY DIRECTOR OF HIGHWAYS, REGION ENGINEER

June 27 2008
Eric E. Harn
 ENGINEER OF DESIGN AND ENVIRONMENT

June 27 2008
Christine M. Reed
 DIRECTOR OF HIGHWAYS, CHIEF ENGINEER

PRINTED BY THE AUTHORITY
OF THE STATE OF ILLINOIS

		1000		
		100% State		
PAY CODE	ITEM DESCRIPTION	UNIT	TOTAL	TOTAL
40600200	BITUMINOUS MATERIALS (PRIME COAT)	TON	10.8	10.8
40600300	AGGREGATE (PRIME COAT)	TON	42.9	42.9
40600895	CONSTRUCTING TEST STRIP	EACH	1.0	1.0
40600982	HOT-MIX ASPHALT SURFACE REMOVAL - BUTT JOINT	SQ YD	250.0	250.0
40600990	TEMPORARY RAMP	SQ YD	83.3	83.3
40603540	POLYMERIZED HOT-MIX ASPHALT SURFACE COURSE, MIX "D", N70	TON	1,801.1	1,801.1
44000155	HOT-MIX ASPHALT SURFACE REMOVAL, 1 1/2"	SQ YD	28,096.9	28,096.9
48203100	HOT-MIX ASPHALT SHOULDERS	TON	580.0	580.0
52000320	NEOPRENE EXPANSION JOINT 2"	FOOT	242.0	242.0
67100100	MOBILIZATION	L SUM	1.0	1.0
70102620	TRAFFIC CONTROL AND PROTECTION, STANDARD 701501	L SUM	1.0	1.0
70102630	TRAFFIC CONTROL AND PROTECTION, STANDARD 701601	L SUM	1.0	1.0
70102635	TRAFFIC CONTROL AND PROTECTION, STANDARD 701701	L SUM	1.0	1.0
70300100	SHORT-TERM PAVEMENT MARKING	FOOT	1,400.0	1,400.0
70300210	TEMPORARY PAVEMENT MARKING - LETTERS AND SYMBOLS	SQ FT	250.0	250.0
70300230	TEMPORARY PAVEMENT MARKING - LINE 5"	FOOT	17,746.0	17,746.0



Rev. 7-16-08

FILE NAME = C:\Projects\603406\shitsq.dgn	USER NAME = [eugh]rnr	DESIGNED -	REVISED -
		DRAWN -	REVISED -
		CHECKED -	REVISED -
		DATE -	REVISED -

**STATE OF ILLINOIS
DEPARTMENT OF TRANSPORTATION**

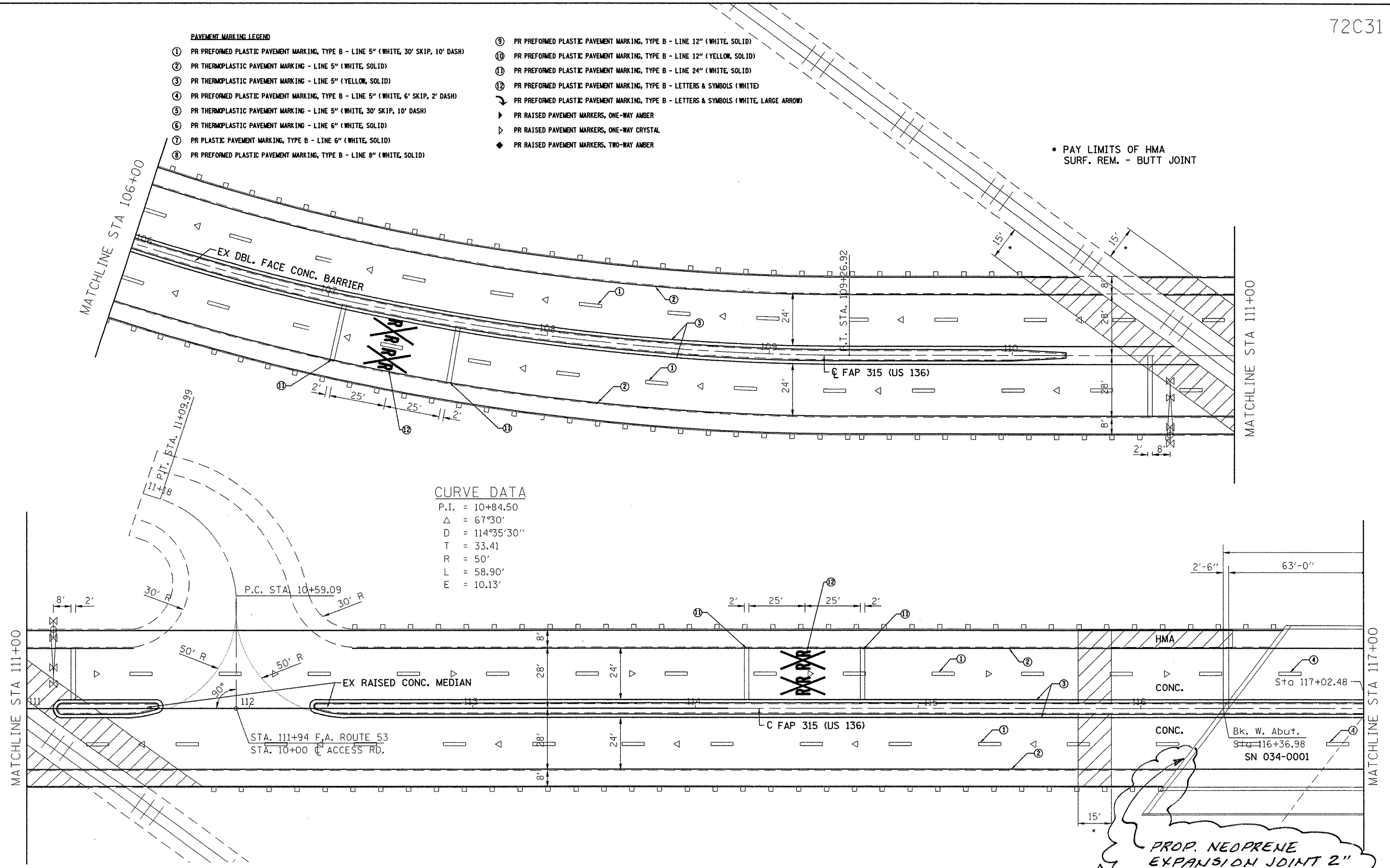
SUMMARY OF QUANTITIES	
SCALE:	SHEET NO. 3 OF 15 SHEETS STA. TO STA.

F.A.P. RTE. 315	SECTION 23 RS-2	COUNTY HANCOCK	TOTAL SHEETS 15	SHEET NO. 3
FED. ROAD DIST. NO. ILLINOIS FED. AID PROJECT			CONTRACT NO. 72C31	

PAVEMENT MARKING LEGEND

- ① PR PREFORMED PLASTIC PAVEMENT MARKING, TYPE B - LINE 5" (WHITE, 30' SKIP, 10' DASH)
- ② PR THERMOPLASTIC PAVEMENT MARKING - LINE 5" (WHITE, SOLID)
- ③ PR THERMOPLASTIC PAVEMENT MARKING - LINE 5" (YELLOW, SOLID)
- ④ PR PREFORMED PLASTIC PAVEMENT MARKING, TYPE B - LINE 5" (WHITE, 6' SKIP, 2' DASH)
- ⑤ PR THERMOPLASTIC PAVEMENT MARKING - LINE 5" (WHITE, 30' SKIP, 10' DASH)
- ⑥ PR THERMOPLASTIC PAVEMENT MARKING - LINE 6" (WHITE, SOLID)
- ⑦ PR PLASTIC PAVEMENT MARKING, TYPE B - LINE 6" (WHITE, SOLID)
- ⑧ PR PREFORMED PLASTIC PAVEMENT MARKING, TYPE B - LINE 8" (WHITE, SOLID)
- ⑨ PR PREFORMED PLASTIC PAVEMENT MARKING, TYPE B - LINE 12" (WHITE, SOLID)
- ⑩ PR PREFORMED PLASTIC PAVEMENT MARKING, TYPE B - LINE 12" (YELLOW, SOLID)
- ⑪ PR PREFORMED PLASTIC PAVEMENT MARKING, TYPE B - LINE 24" (WHITE, SOLID)
- ⑫ PR PREFORMED PLASTIC PAVEMENT MARKING, TYPE B - LETTERS & SYMBOLS (WHITE)
- PR PREFORMED PLASTIC PAVEMENT MARKING, TYPE B - LETTERS & SYMBOLS (WHITE, LARGE ARROW)
- ▶ PR RAISED PAVEMENT MARKERS, ONE-WAY AMBER
- ▷ PR RAISED PAVEMENT MARKERS, ONE-WAY CRYSTAL
- ◆ PR RAISED PAVEMENT MARKERS, TWO-WAY AMBER

• PAY LIMITS OF HMA SURF. REM. - BUTT JOINT



CURVE DATA

P.I. = 10+84.50
 Δ = 67°30'
 D = 114°35'30"
 T = 33.41
 R = 50'
 L = 58.90'
 E = 10.13'

PROP. NEOPRENE EXPANSION JOINT 2"

Rev. 7-16-08

FILE NAME = C:\Projects\603408\shiplon_94-117.dgn
 USER NAME = laughlinr1

DESIGNED -
 DRAWN -
 CHECKED -
 DATE -

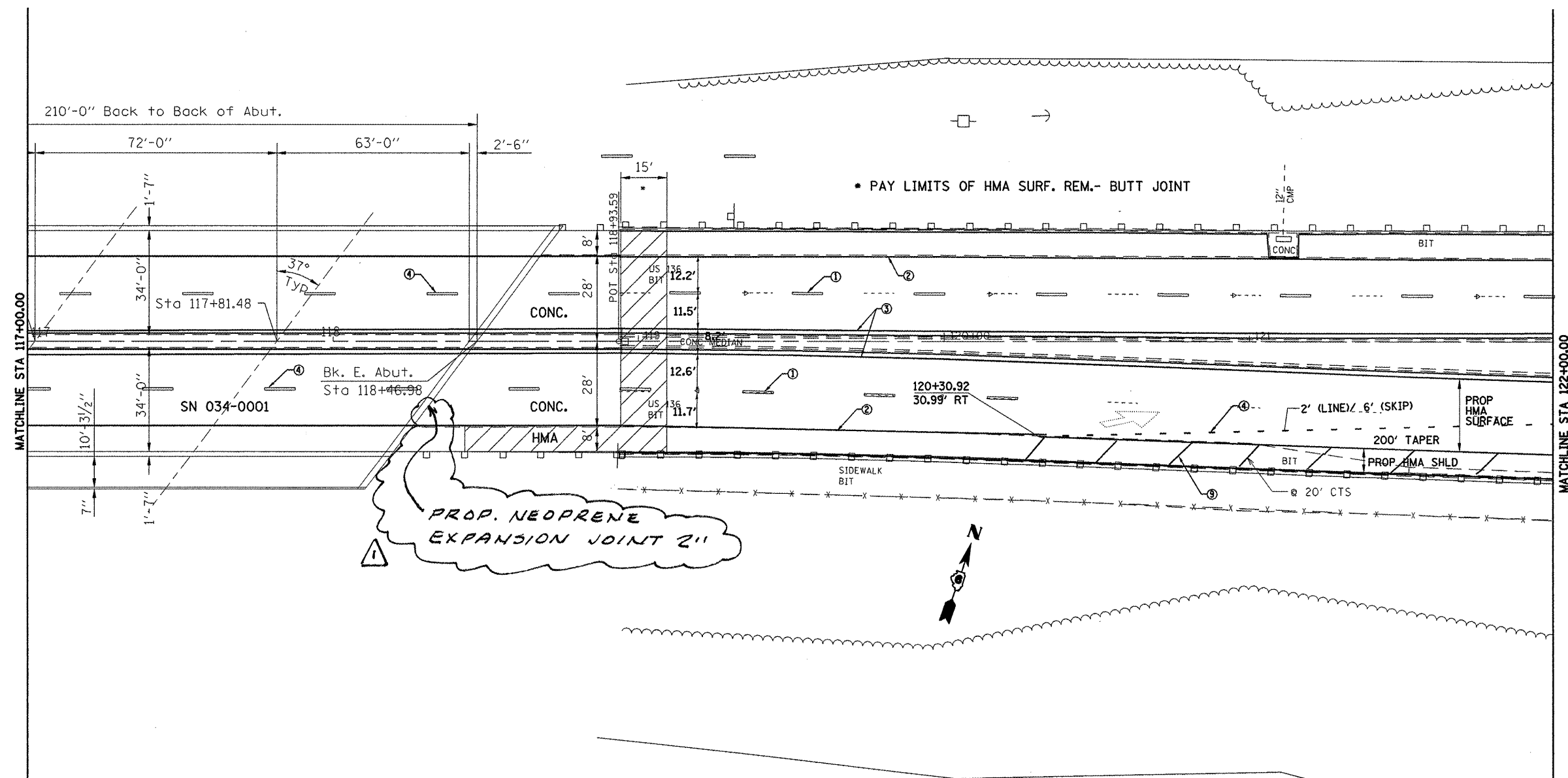
REVISIED -
 REVISIED -
 REVISIED -
 REVISIED -

**STATE OF ILLINOIS
 DEPARTMENT OF TRANSPORTATION**

PLAN VIEW

SCALE: SHEET NO. OF SHEETS STA. TO STA.

F.A.P. RTE. 315	SECTION 23 RS-2	COUNTY HANCOCK	TOTAL SHEETS 15	SHEET NO. 10
FED. ROAD DIST. NO. [ILLINOIS] FED. AID PROJECT				
CONTRACT NO. 72C31				



PAVEMENT MARKING LEGEND

- ① PR PREFORMED PLASTIC PAVEMENT MARKING, TYPE B - LINE 5" (WHITE, 30' SKIP, 10' DASH)
- ② PR THERMOPLASTIC PAVEMENT MARKING - LINE 5" (WHITE, SOLID)
- ③ PR THERMOPLASTIC PAVEMENT MARKING - LINE 5" (YELLOW, SOLID)
- ④ PR PREFORMED PLASTIC PAVEMENT MARKING, TYPE B - LINE 5" (WHITE, 6' SKIP, 2' DASH)
- ⑤ PR THERMOPLASTIC PAVEMENT MARKING - LINE 5" (WHITE, 30' SKIP, 10' DASH)
- ⑥ PR THERMOPLASTIC PAVEMENT MARKING - LINE 6" (WHITE, SOLID)
- ⑦ PR PLASTIC PAVEMENT MARKING, TYPE B - LINE 6" (WHITE, SOLID)
- ⑧ PR PREFORMED PLASTIC PAVEMENT MARKING, TYPE B - LINE 8" (WHITE, SOLID)
- ⑨ PR PREFORMED PLASTIC PAVEMENT MARKING, TYPE B - LINE 12" (WHITE, SOLID)
- ⑩ PR PREFORMED PLASTIC PAVEMENT MARKING, TYPE B - LINE 12" (YELLOW, SOLID)
- ⑪ PR PREFORMED PLASTIC PAVEMENT MARKING, TYPE B - LINE 24" (WHITE, SOLID)
- ⑫ PR PREFORMED PLASTIC PAVEMENT MARKING, TYPE B - LETTERS & SYMBOLS (WHITE)
- PR PREFORMED PLASTIC PAVEMENT MARKING, TYPE B - LETTERS & SYMBOLS (WHITE, LARGE ARROW)
- ▶ PR RAISED PAVEMENT MARKERS, ONE-WAY AMBER
- ▷ PR RAISED PAVEMENT MARKERS, ONE-WAY CRYSTAL
- ◆ PR RAISED PAVEMENT MARKERS, TWO-WAY AMBER

Rev. 7-16-08

FILE NAME =	USER NAME = laughlinr1	DESIGNED -	REVISED -	STATE OF ILLINOIS DEPARTMENT OF TRANSPORTATION	PLAN VIEW	F.A.P. RTE.	SECTION	COUNTY	TOTAL SHEETS	SHEET NO.	
C:\Projects\d603408\shiplanb001.dgn		DRAWN -	REVISED -			315	23 RS-2	HANCOCK	15	11	
PLOT SCALE = 40.0000' / IN.		CHECKED -	REVISED -			CONTRACT NO. 72C31					
PLOT DATE = Jul-09-2008 12:00:02PM		DATE -	REVISED -			FED. ROAD DIST. NO. ILLINOIS FED. AID PROJECT					

Joint Size	"C" at 50°F	"D" at 50°F
2"	2"	1 1/2" Min.
2 1/2"	2 1/2"	1 3/4" Min.
4"	3"	2 1/2" Min.

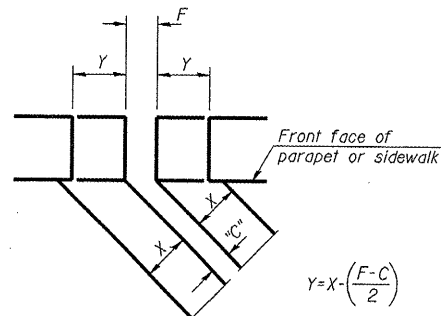
INSTALLATION NOTES

- Install continuous seal in roadway, parapet, curb, and sidewalk.
- Install anchor blocks as indicated.

Note A:
Maximum spacing of anchor bolts shall be 12" centers.

SKEW LIMITATIONS

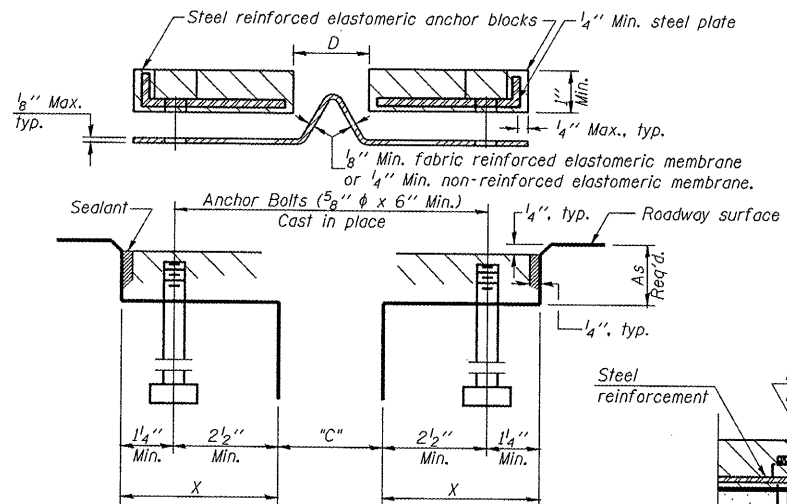
The details of the anchor blocks and the elastomeric membrane in the parapet, as shown, are for up to 50° skews. For skews greater than 50°, the anchor blocks and the elastomeric membrane, installed according to dimension "D", might require modifications to insure a minimum clearance of 1/2" from centerline of anchor studs to edge of parapet opening. The anchor blocks and the elastomeric membrane shall also be installed to the top of the parapet with the anchor studs spaced at ±12" cts.



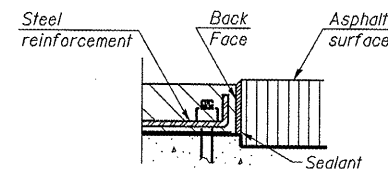
$$Y = X - \left(\frac{F - C}{2} \right)$$

For dimension "F" see sheet #

FORMING BLOCKOUT SKETCH



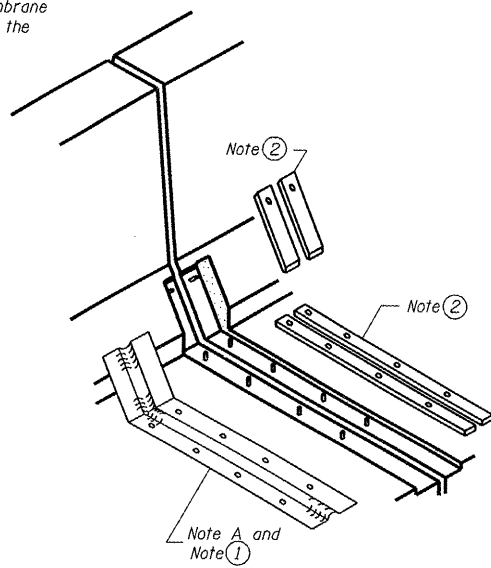
CROSS SECTION



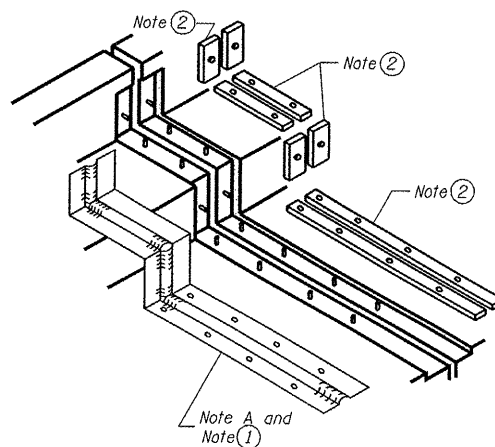
ANCHOR BLOCK WITH ASPHALT SURFACE

GENERAL NOTES

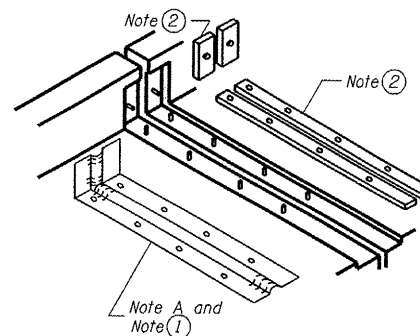
Continuous Seal Neoprene Expansion Joint shall consist of molded anchor blocks of elastomer and steel, field assembled over continuous lengths of elastomeric membrane. The elastomeric membrane shall be premolded with a single or a double upward convolution that will have a "memory" to return to its molded position upon joint closure. The convolution length shall be such that the extended length will not be greater than the manufactured length when the joint is fully expanded in its design range and will not protrude above the anchor blocks when the joint is fully compressed. Joint openings shall be adjusted according to Article 503.10(c) of the Standard Specifications when the deck is poured at an ambient temperature other than 50° F. The parapet and roadway membrane shall be made continuous by an approved vulcanizing process. Lapping will not be permitted.



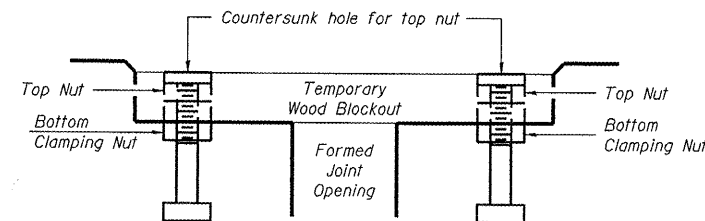
AT PARAPET



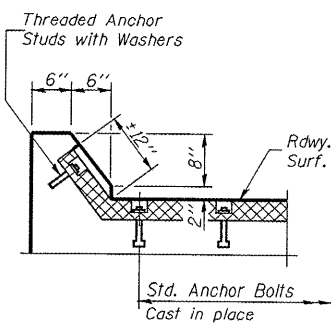
AT SIDEWALK OR MEDIAN



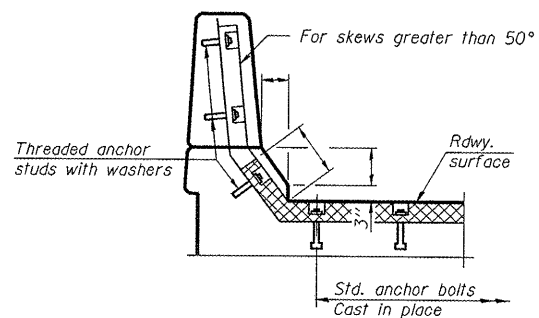
AT WALL



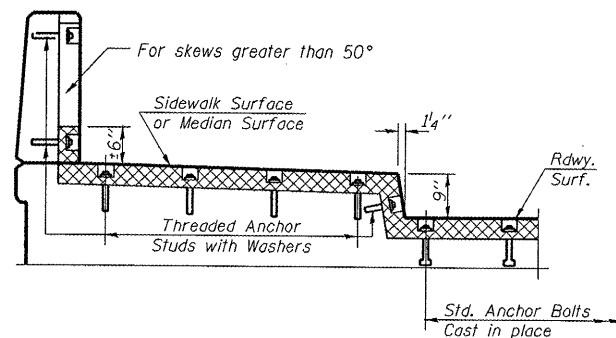
RECOMMENDED BLOCKOUT DETAIL



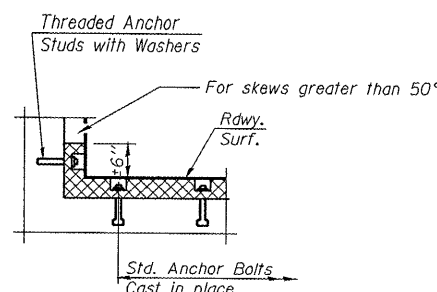
AT CURB



AT PARAPET



AT SIDEWALK OR MEDIAN TYPICAL END TREATMENTS



AT WALL

CONTINUOUS SEAL TYPE NEOPRENE EXPANSION JOINTS

Added Sheet 7-16-08

EJ-CS

10-22-04

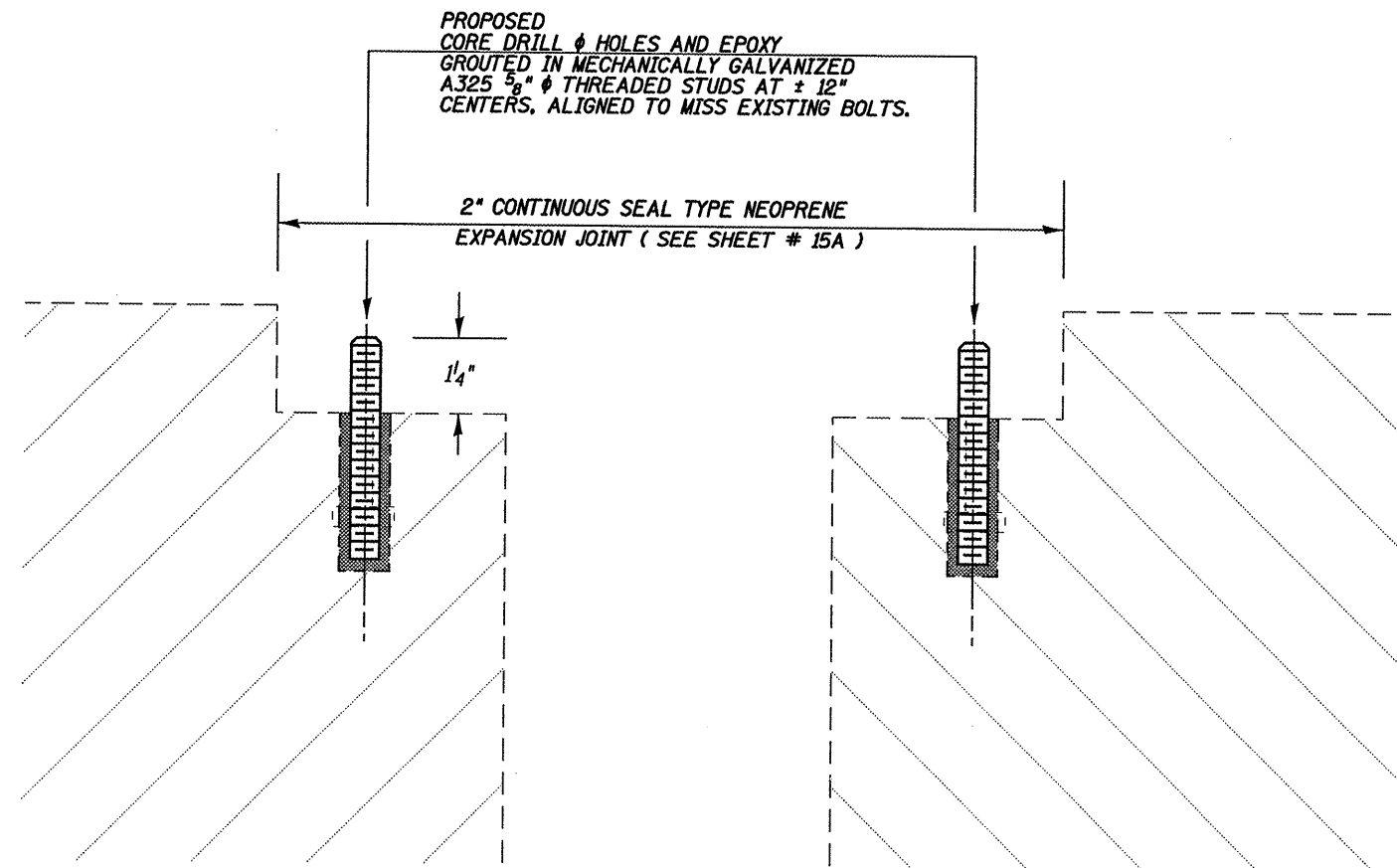
FILE NAME =	USER NAME = laughlinr1	DESIGNED -	REVISED -
C:\Projects\683488\neopreneexp\joint.dgn		DRAWN -	REVISED -
PLOT SCALE = 100.0000 / IN.		CHECKED -	REVISED -
PLOT DATE = Jul-15-2008 11:49:08AM		DATE -	REVISED -

STATE OF ILLINOIS
DEPARTMENT OF TRANSPORTATION

CONTINUOUS SEAL TYPE
NEOPRENE EXPANSION JOINT

SCALE: SHEET NO. OF SHEETS STA. TO STA.

F.A.P. RTE.	SECTION	COUNTY	TOTAL SHEETS	SHEET NO.
315	23RS-2	HANCOCK	15	15A
FED. ROAD DIST. NO. [ILLINOIS] FED. AID PROJECT			CONTRACT NO. 72C31	



2" NEOPRENE EXPANSION JOINT (PROP.)

NOTE:
 THE REMOVAL OF THE EXISTING EXPANSION JOINT, REMOVAL OF EXISTING STUDS, AND INSTALLATION OF NEW STUDS TO BE INCLUDED WITH COST FOR NEOPRENE EXPANSION JOINT 2".

Added Sheet 7-16-08

FILE NAME *	USER NAME * laughlunr1	DESIGNED -	REVISED -	STATE OF ILLINOIS DEPARTMENT OF TRANSPORTATION	CONTINUOUS SEAL TYPE NEOPRENE EXPANSION JOINT	F.A.P. RTE.	SECTION	COUNTY	TOTAL SHEETS	SHEET NO.	
C:\Projects\4683488\ve\neopreneexpjoint.dgn		DRAWN -	REVISED -			315	23RS-2	HANCOCK	15	15B	
PLOT SCALE * 100.0000' / IN.		CHECKED -	REVISED -			CONTRACT NO. 72C31					
PLOT DATE * Jul-15-2008 11:49:11AM		DATE -	REVISED -			SCALE:	SHEET NO. OF SHEETS	STA.	TO STA.	FED. ROAD DIST. NO.	ILLINOIS FED. AID PROJECT