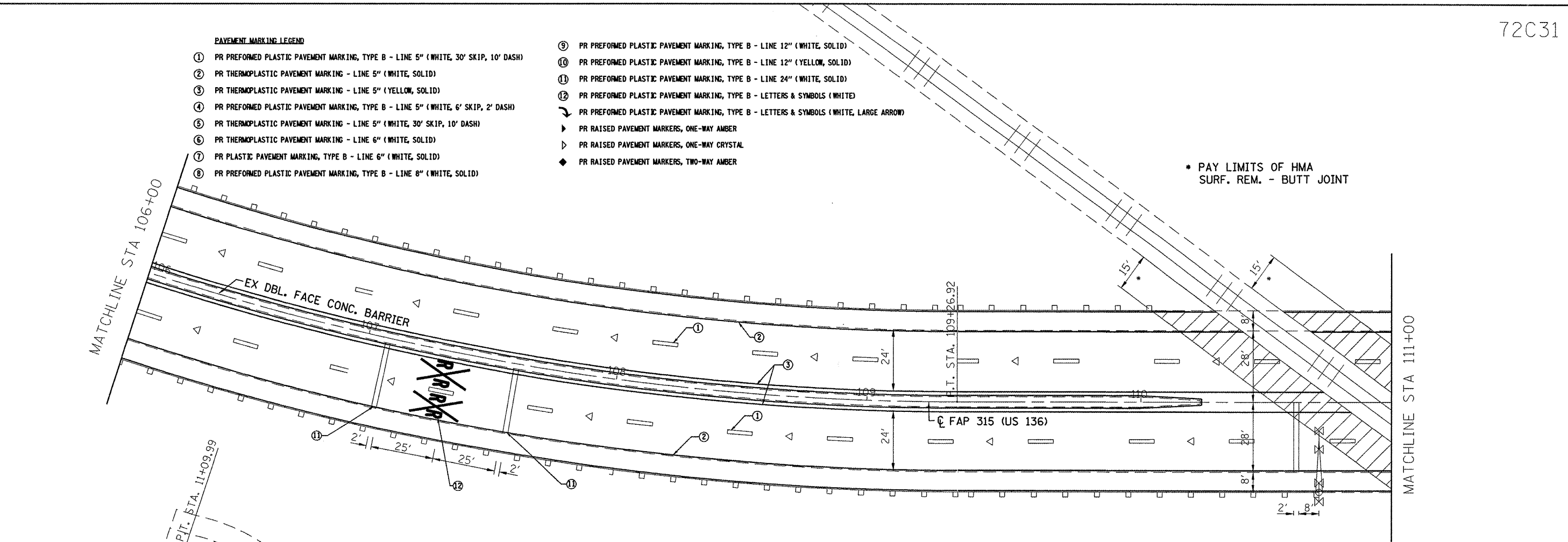


**PAVEMENT MARKING LEGEND**

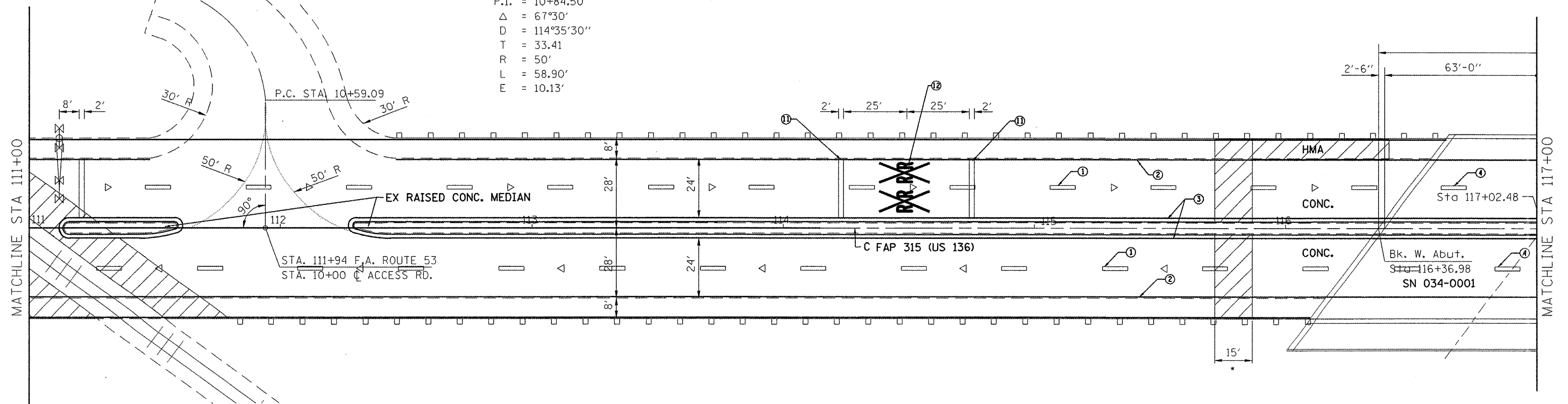
- ① PR PREFORMED PLASTIC PAVEMENT MARKING, TYPE B - LINE 5" (WHITE, 30' SKIP, 10' DASH)
- ② PR THERMOPLASTIC PAVEMENT MARKING - LINE 5" (WHITE, SOLID)
- ③ PR THERMOPLASTIC PAVEMENT MARKING - LINE 5" (YELLOW, SOLID)
- ④ PR PREFORMED PLASTIC PAVEMENT MARKING, TYPE B - LINE 5" (WHITE, 6' SKIP, 2' DASH)
- ⑤ PR THERMOPLASTIC PAVEMENT MARKING - LINE 5" (WHITE, 30' SKIP, 10' DASH)
- ⑥ PR THERMOPLASTIC PAVEMENT MARKING - LINE 6" (WHITE, SOLID)
- ⑦ PR PLASTIC PAVEMENT MARKING, TYPE B - LINE 6" (WHITE, SOLID)
- ⑧ PR PREFORMED PLASTIC PAVEMENT MARKING, TYPE B - LINE 8" (WHITE, SOLID)
- ⑨ PR PREFORMED PLASTIC PAVEMENT MARKING, TYPE B - LINE 12" (WHITE, SOLID)
- ⑩ PR PREFORMED PLASTIC PAVEMENT MARKING, TYPE B - LINE 12" (YELLOW, SOLID)
- ⑪ PR PREFORMED PLASTIC PAVEMENT MARKING, TYPE B - LINE 24" (WHITE, SOLID)
- ⑫ PR PREFORMED PLASTIC PAVEMENT MARKING, TYPE B - LETTERS & SYMBOLS (WHITE)
- PR PREFORMED PLASTIC PAVEMENT MARKING, TYPE B - LETTERS & SYMBOLS (WHITE, LARGE ARROW)
- ▶ PR RAISED PAVEMENT MARKERS, ONE-WAY AMBER
- ▷ PR RAISED PAVEMENT MARKERS, ONE-WAY CRYSTAL
- ◆ PR RAISED PAVEMENT MARKERS, TWO-WAY AMBER

\* PAY LIMITS OF HMA SURF. REM. - BUTT JOINT



**CURVE DATA**

P.I. = 10+84.50  
 $\Delta$  = 67°30'  
 D = 114°35'30"  
 T = 33.41  
 R = 50'  
 L = 58.90'  
 E = 10.13'



FILE NAME =	USER NAME = laughlinr1	DESIGNED -	REVISED -
C:\Projects\603408\shplan_94-117.dgn		DRAWN -	REVISED -
		CHECKED -	REVISED -
		DATE -	REVISED -

**STATE OF ILLINOIS  
 DEPARTMENT OF TRANSPORTATION**

<b>PLAN VIEW</b>				
SCALE:	SHEET NO.	OF	SHEETS	STA. TO STA.

F.A.P. RTE. 315	SECTION 23 RS-2	COUNTY HANCOCK	TOTAL SHEETS 15	SHEET NO. 10
FED. ROAD DIST. NO. [ILLINOIS] FED. AID PROJECT				
CONTRACT NO. 72C31				