

**STATE OF ILLINOIS**  
**DEPARTMENT OF TRANSPORTATION**  
**DIVISION OF HIGHWAYS**  
**PROPOSED**  
**HIGHWAY PLANS**

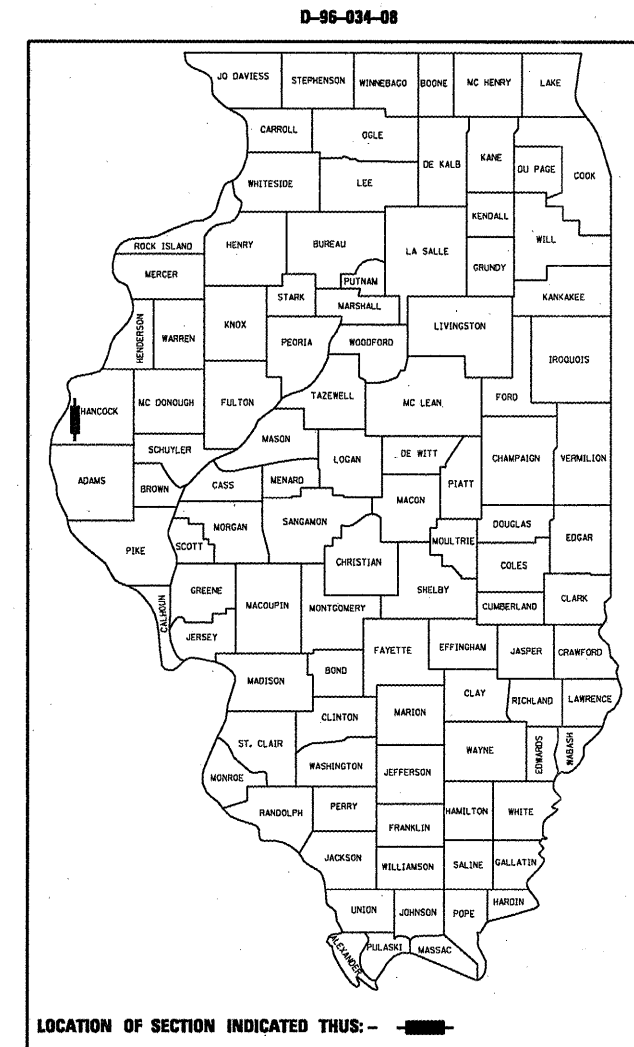
F.A.P. RTE.	SECTION	COUNTY	TOTAL SHEETS	SHEET NO.
315	23RS-2	HANCOCK	15	1
FED. ROAD DIST. NO.	ILLINOIS	CONTRACT NO. 72C31		

72C31

**INDEX OF SHEETS**

- 1 COVER SHEET
- 2 GENERAL NOTES AND HIGHWAY STANDARDS
- 3-4 SUMMARY OF QUANTITIES
- 5-6 SCHEDULE OF QUANTITIES
- 7-8 TYPICAL SECTIONS
- 9-15 PLAN VIEW

**FAP ROUTE 315 (US 136)**  
**SECTION 23RS-2**  
**PROJECT**  
**HANCOCK COUNTY**  
**C-96-005-09**

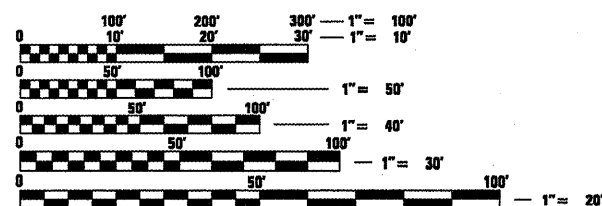


**BEGIN IMPROVEMENT**  
**STA 97+13**

**END IMPROVEMENT**  
**STA 137+50**

**BRIDGE OMISSION**  
**STA 116+37 TO STA 118+47**

**AADT = 12,800 (2005)**  
**MU = 350**  
**SU = 600**

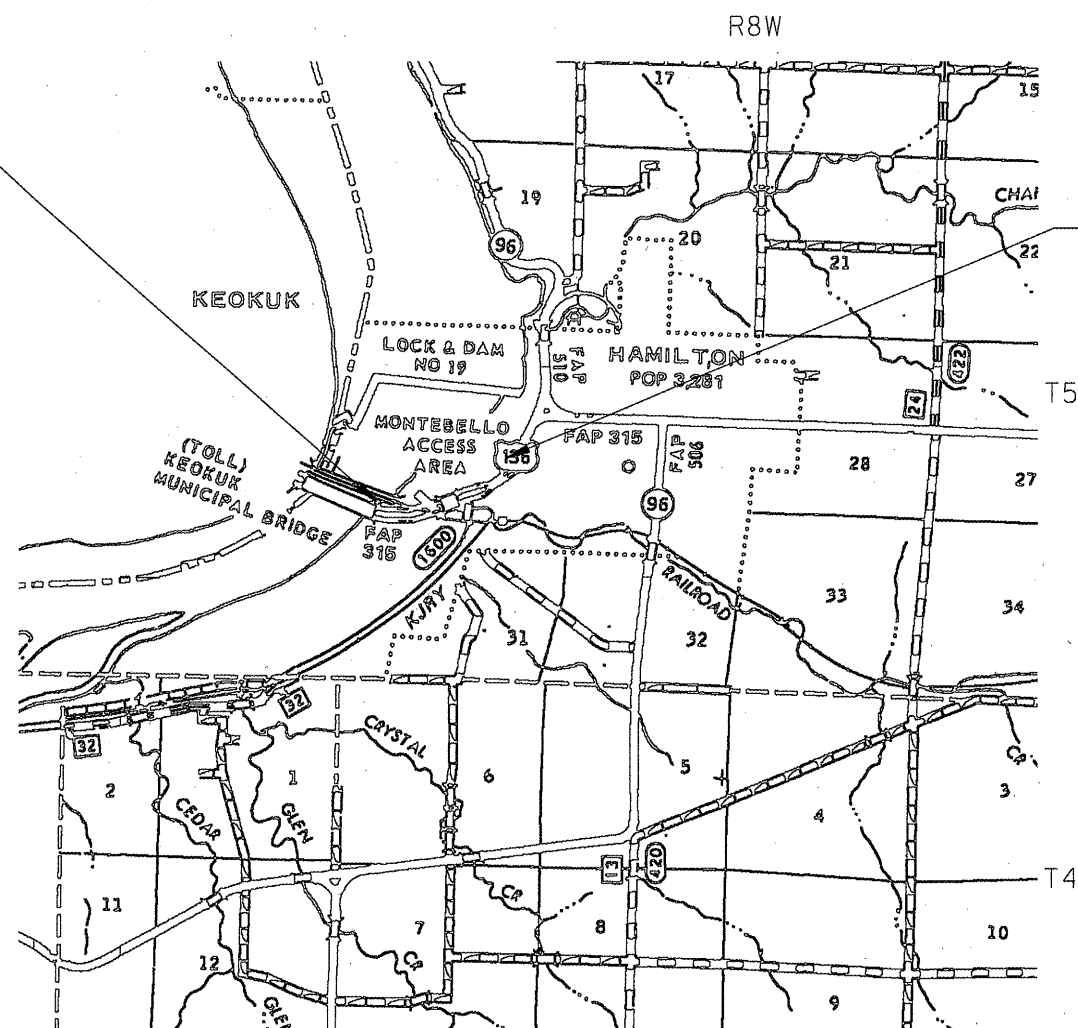


FULL SIZE PLANS HAVE BEEN PREPARED USING STANDARD ENGINEERING SCALES. REDUCED SIZED PLANS WILL NOT CONFORM TO STANDARD SCALES. IN MAKING MEASUREMENTS ON REDUCED PLANS, THE ABOVE SCALES MAY BE USED.

J.U.L.I.E.  
 JOINT UTILITY LOCATION INFORMATION FOR EXCAVATION  
 1-800-892-0123  
 OR 811

**PROJECT ENGINEER: JOHN NEGANGARD (217) 782-6990**  
**SQUAD LEADER: VINCE MADONIA (217) 785-9046**

**CONTRACT NO. 72C31**



PROJECT LENGTH = 4037 FT. = 0.76 MILE

**STATE OF ILLINOIS**  
**DEPARTMENT OF TRANSPORTATION**  
**DIVISION OF HIGHWAYS**

SUBMITTED July 10 2008  
Reginald Dinsdale  
 DEPUTY DIRECTOR OF HIGHWAYS, REGION ENGINEER

June 27 2008  
Eric E. Harn  
 ENGINEER OF DESIGN AND ENVIRONMENT

June 27 2008  
Christine M. Reed  
 DIRECTOR OF HIGHWAYS, CHIEF ENGINEER

**PRINTED BY THE AUTHORITY**  
**OF THE STATE OF ILLINOIS**

**GENERAL NOTES:**

1. NO EXCAVATION ANTICIPATED ON THIS PROJECT WHICH WOULD AFFECT UTILITIES. SHOULD ANY EXCAVATION DEVIATING FROM THAT ANTICIPATED BE REQUIRED, J. U. L. I. E. WILL BE NOTIFIED A MINIMUM OF 48 HOURS IN ADVANCE - (800) 892-0123.
2. THE FOLLOWING APPLICATION RATES WERE USED FOR QUANTITY CALCULATIONS:  
 LEVELING BINDER 0.056 T / SY\*IN  
 BIT. CONC. SURF. CSE. 0.056 T / SY\*IN  
 PRIME COAT (BIT) .00038 T / SY  
 PRIME COAT (AGG) .002 T / SY
3. THE THICKNESS OF BITUMINOUS MIXTURES SHOWN ON THE PLANS IS THE NOMINAL THICKNESS. DEVIATIONS FROM THE NOMINAL THICKNESS WILL BE PERMITTED WHEN SUCH DEVIATIONS OCCUR DUE TO IRREGULARITIES IN THE EXISTING SURFACE OR BASE ON WHICH THE BITUMINOUS MIXTURE IS PLACED.
4. ALL ELEVATIONS SHOWN IN THE PLANS ARE U. S. G. S. MEAN SEA LEVEL DATUM.
5. ANY REFERENCE TO THE STANDARDS THROUGHOUT THE PLANS SHALL BE INTERPRETED TO BE THE LATEST STANDARDS OF THE DEPARTMENT AS INCLUDED IN THE PLANS.
6. THE CONTRACTOR WILL BE RESPONSIBLE FOR THE TRAFFIC CONTROL DEVICES AT ALL TIMES DURING CONSTRUCTION ACTIVITIES AND SHALL COORDINATE THE ITEMS OF WORK IN ORDER TO KEEP HAZARD TRAFFIC INCONVIENCES TO A MINIMUM
7. ALL PAVEMENT MARKINGS SHALL BE VERIFIED BY RESIDENT/FIELD ENGINEER PRIOR TO THEIR PLACEMENT.

**STANDARDS**

- 701001-01
- 701006-02
- 701011-01
- 701101-01
- 701106-01
- 701301-02
- 701311-02
- 701426-02
- 701501-04
- 701601-05
- 701701-05
- 780001-01
- 781001-02
- 000001-05
- 001006

THE FOLLOWING MIXTURE REQUIREMENTS ARE APPLICABLE TO THIS PROJECT:

MIXTURE USES:	HMA Surface US 136	HMA US 136
AC/PG:	SBS PG 70-22	PG 58-22
DESIGN AIR VOIDS:	4.0% @ N Design = 70	2.0% @ N Design = 30
MIXTURE COMPOSITION: (GRADATION MIXTURE)	IL 9.5 OR IL 12.5	BAM
FRICITION AGGREGATE:	Mix *D*	N/A

<b>DISTRICT SIX</b>	
EXAMINED <u>July 8</u> 20 <u>08</u>	
<i>[Signature]</i>	
OPERATIONS ENGINEER	
EXAMINED <u>July 8</u> 20 <u>08</u>	
<i>[Signature]</i>	
PROGRAM IMPLEMENTATION ENGINEER	
EXAMINED <u>July 8</u> 20 <u>08</u>	
<i>[Signature]</i>	
PROGRAM DEVELOPMENT ENGINEER	

PAY CODE	ITEM DESCRIPTION	UNIT	1000	
			100% State	TOTAL
40600200	BITUMINOUS MATERIALS (PRIME COAT)	TON	10.8	10.8
40600300	AGGREGATE (PRIME COAT)	TON	42.9	42.9
40600895	CONSTRUCTING TEST STRIP	EACH	1.0	1.0
40600982	HOT-MIX ASPHALT SURFACE REMOVAL - BUTT JOINT	SQ YD	250.0	250.0
40600990	TEMPORARY RAMP	SQ YD	83.3	83.3
40603540	POLYMERIZED HOT-MIX ASPHALT SURFACE COURSE, MIX "D", N70	TON	1,801.1	1,801.1
44000155	HOT-MIX ASPHALT SURFACE REMOVAL, 1 1/2"	SQ YD	28,096.9	28,096.9
48203100	HOT-MIX ASPHALT SHOULDERS	TON	580.0	580.0
67100100	MOBILIZATION	LSUM	1.0	1.0
70102620	TRAFFIC CONTROL AND PROTECTION, STANDARD 701501	L SUM	1.0	1.0
70102630	TRAFFIC CONTROL AND PROTECTION, STANDARD 701601	L SUM	1.0	1.0
70102635	TRAFFIC CONTROL AND PROTECTION, STANDARD 701701	L SUM	1.0	1.0
70300100	SHORT-TERM PAVEMENT MARKING	FOOT	1,400.0	1,400.0
70300210	TEMPORARY PAVEMENT MARKING - LETTERS AND SYMBOLS	SQ FT	250.0	250.0
70300230	TEMPORARY PAVEMENT MARKING - LINE 5"	FOOT	17,746.0	17,746.0

FILE NAME = C:\Projects\4603408\shitsq.dgn

USER NAME = laughlin  
 PLOT SCALE = 100.0000' / IN.  
 PLOT DATE = Jul-09-2008 11:59:45AM

DESIGNED -	REVISED -
DRAWN -	REVISED -
CHECKED -	REVISED -
DATE -	REVISED -

**STATE OF ILLINOIS  
 DEPARTMENT OF TRANSPORTATION**

**SUMMARY OF QUANTITIES**

SCALE: SHEET NO. 3 OF 15 SHEETS STA. TO STA.

F.A.P. RTE.	SECTION	COUNTY	TOTAL SHEETS	SHEET NO.
315	23 RS-2	HANCOCK	15	3
FED. ROAD DIST. NO. [ILLINOIS] FED. AID PROJECT				

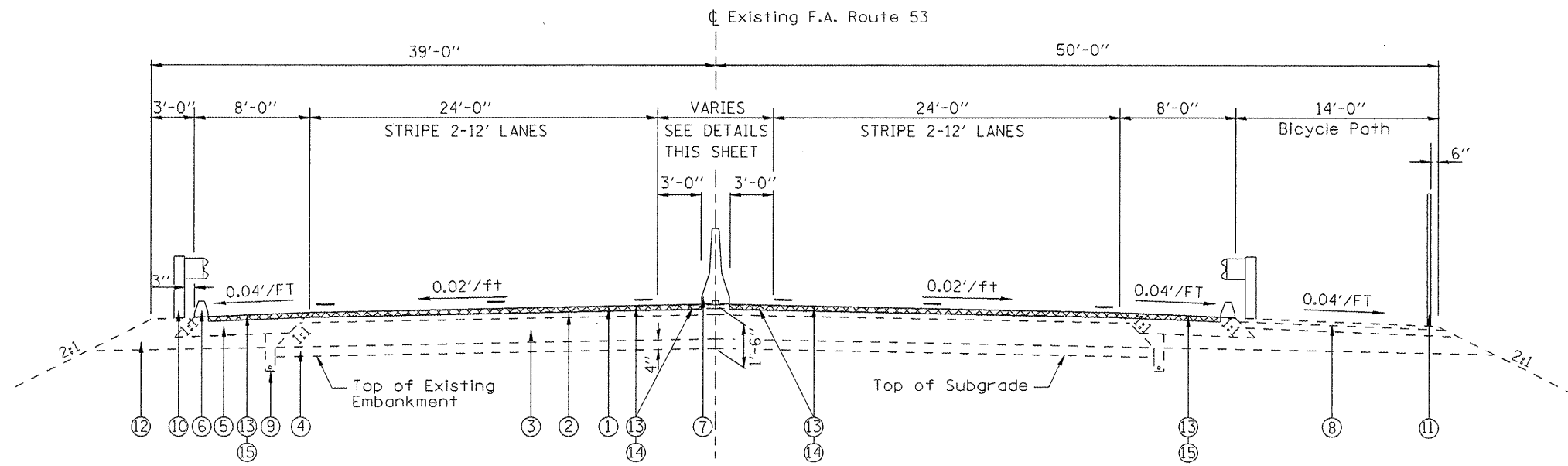
CONTRACT NO. 72C31

			1000	
			100% State	
PAY CODE	ITEM DESCRIPTION	UNIT	TOTAL	TOTAL
70300240	TEMPORARY PAVEMENT MARKING - LINE 6"	FOOT	687.0	687.0
70300250	TEMPORARY PAVEMENT MARKING - LINE 8"	FOOT	502.0	502.0
70300260	TEMPORARY PAVEMENT MARKING - LINE 12"	FOOT	580.0	580.0
70300280	TEMPORARY PAVEMENT MARKING - LINE 24"	FOOT	222.0	222.0
70301000	WORK ZONE PAVEMENT MARKING REMOVAL	SQ FT	56.0	56.0
* 78000300	THERMOPLASTIC PAVEMENT MARKING - LINE 5"	FOOT	16,297.0	16,297.0
* 78000400	THERMOPLASTIC PAVEMENT MARKING - LINE 6"	FOOT	426.0	426.0
* 78004200	PREFORMED PLASTIC PAVEMENT MARKING, TYPE B - INLAID - LETTERS AND SYMBOLS	SQ FT	400.8	400.8
* 78004220	PREFORMED PLASTIC PAVEMENT MARKING, TYPE B - INLAID - LINE 5"	FOOT	1,449.0	1,449.0
* 78004230	PREFORMED PLASTIC PAVEMENT MARKING, TYPE B - INLAID - LINE 6"	FOOT	261.0	261.0
* 78004240	PREFORMED PLASTIC PAVEMENT MARKING, TYPE B - INLAID - LINE 8"	FOOT	502.0	502.0
* 78004250	PREFORMED PLASTIC PAVEMENT MARKING, TYPE B - INLAID - LINE 12"	FOOT	784.0	784.0
* 78004280	PREFORMED PLASTIC PAVEMENT MARKING, TYPE B - INLAID - LINE 24"	FOOT	222.0	222.0
* 78100100	RAISED REFLECTOR PAVEMENT MARKER	EACH	136.0	136.0
78300200	RAISED REFLECTOR PAVEMENT MARKER REMOVAL	EACH	100.0	100.0
Z0048665	RAILROAD PROTECTIVE LIABILITY INSURANCE	L SUM	1.0	1.0

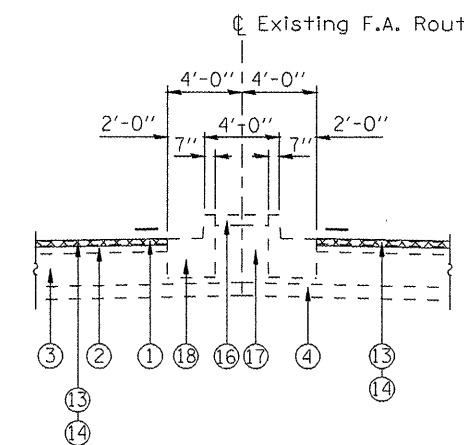
\* SPECIALTY  
ITEM



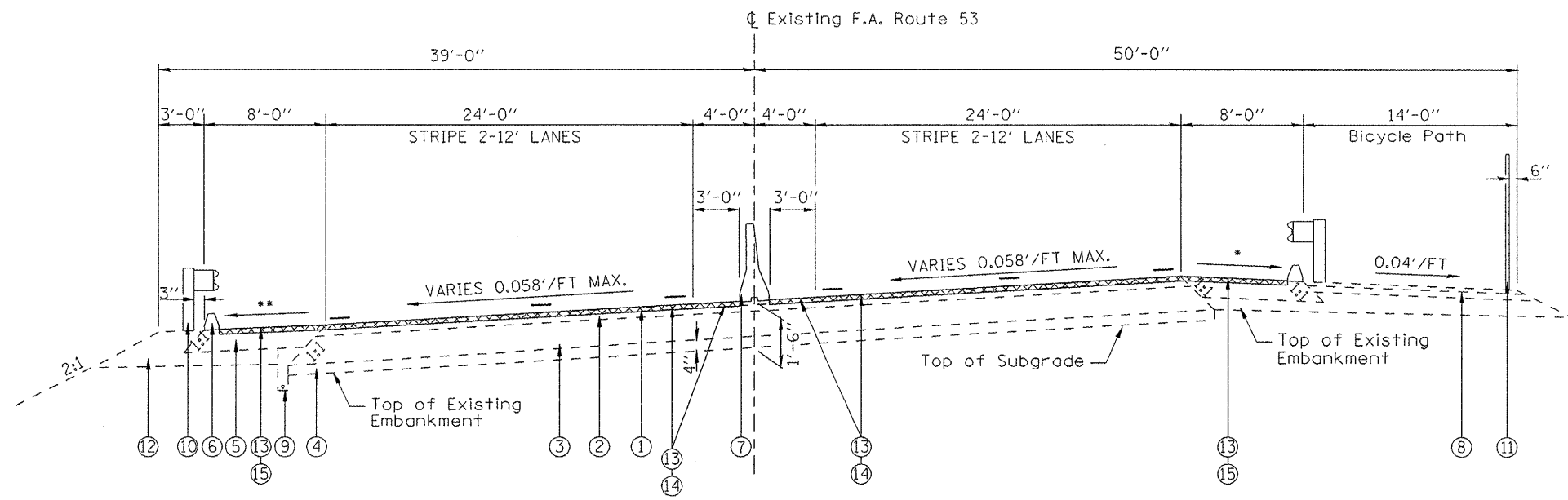




FAP 315 (US 136)  
 STA 97+13 TO 101+25  
 STA 110+35 TO STA 115+95.88



FAP 315 (US 136)  
 STA 111+16 TO STA 111+58.43  
 STA 112+29.57 TO STA 115+95.88



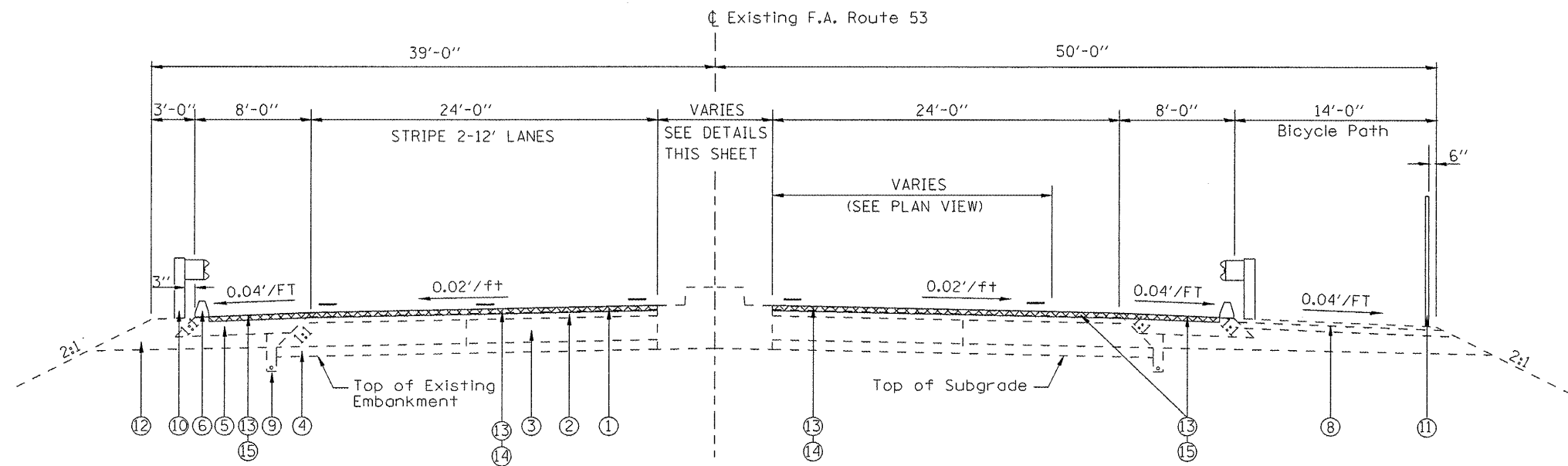
FAP 315 (US 136)  
 STA 101+25 TO STA 110+35

\* 8% MAX BREAKOVER  
 \*\* SAME AS SE, BUT NOT LESS THAN 4.0%

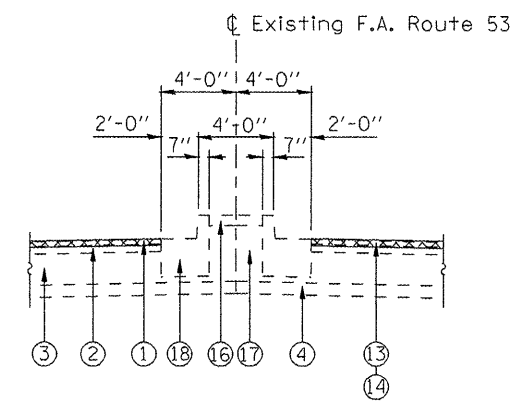
LEGEND

- ① EXISTING 1 1/2" BITUMINOUS CONCRETE SURFACE COURSE, MIXTURE D, CLASS I
- ② EXISTING 2 1/2" BITUMINOUS CONCRETE BINDER COURSE
- ③ EXISTING 10" BITUMINOUS BASE COURSE
- ④ EXISTING 4" SUB BASE GRANULAR MATERIAL, TYPE A
- ⑤ EXISTING 8" BITUMINOUS SHOULDER
- ⑥ BITUMINOUS CONCRETE CURB
- ⑦ EXISTING CONCRETE BARRIER, DOUBLE FACE
- ⑧ EXISTING 4" BITUMINOUS CONCRETE SURFACE COURSE, MIXTURE C, CLASS I
- ⑨ EXISTING PIPE UNDERDRAIN, 4"
- ⑩ EXISTING STEEL PLATE BEAM GUARDRAIL, TYPE A
- ⑪ EXISTING 4'-6" CHAIN LINK FENCE
- ⑫ EXISTING BACKFILL
- ⑬ PROPOSED BITUMINOUS SURFACE REMOVAL 1 1/2"
- ⑭ PROPOSED BITUMINOUS SURFACE 1 1/2"
- ⑮ PROPOSED BITUMINOUS SHOULDER 1 1/2"
- ⑯ EXISTING CONCRETE MEDIAN SURFACE 4" (TYPE P)
- ⑰ EXISTING SANDFILL
- ⑱ EXISTING COMBINATION CONCRETE CURB AND GUTTER, TYPE B-9.24
- ⑲ EXISTING LEVELING BINDER

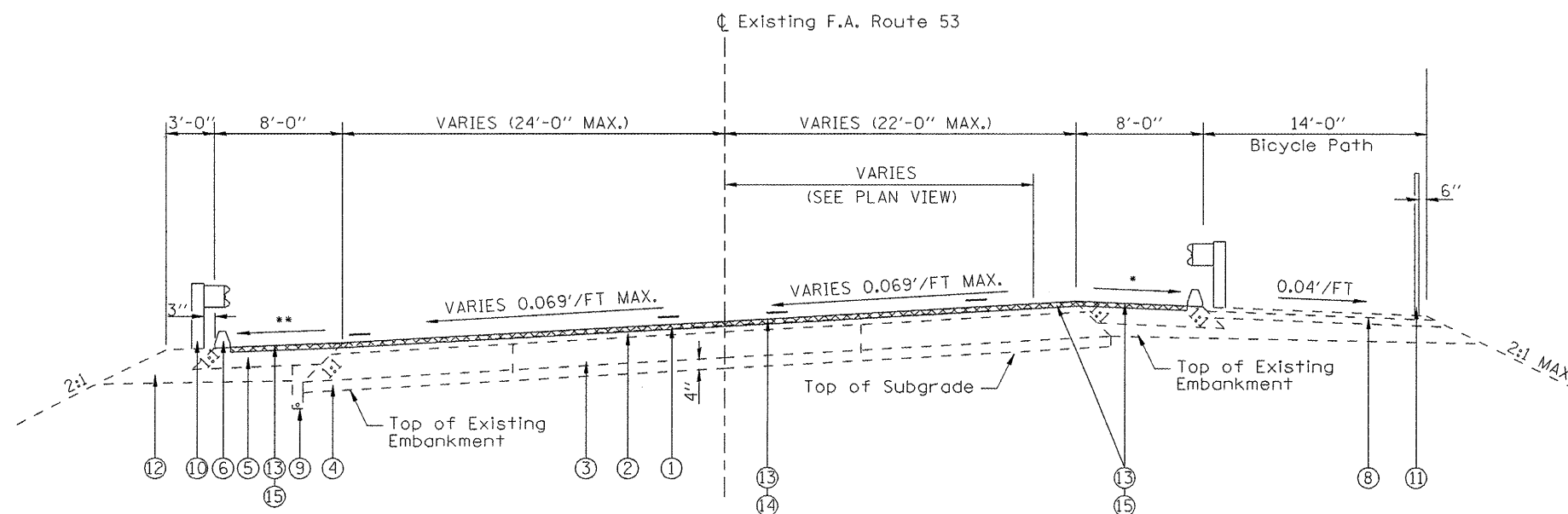
FILE NAME = C:\Projects\6603408\atypical.dgn	USER NAME = laughlinr1	DESIGNED -	REVISED -	<b>STATE OF ILLINOIS DEPARTMENT OF TRANSPORTATION</b>	<b>TYPICAL CROSS SECTION</b>			F.A.P. RTE. 315	SECTION 23 RS-2	COUNTY HANCOCK	TOTAL SHEETS 15	SHEET NO. 7
	PLOT SCALE = 10.0000' / IN.	DRAWN -	REVISED -		SCALE:	SHEET NO.	OF SHEETS	STA.	TO STA.	CONTRACT NO. 72C31		
	PLOT DATE = Jul-09-2008 11:59:53AM	CHECKED -	REVISED -							FED. ROAD DIST. NO. [ILLINOIS] FED. AID PROJECT		
		DATE -	REVISED -									



FAP 315 (US 136)  
STA 118+88.08 TO 130+80



FAP 315 (US 136)  
STA 111+16 TO STA 111+58.43  
STA 112+29.57 TO STA 115+95.88



FAP 315 (US 136)  
STA 130+80 TO STA 135+60

\* 8% MAX BREAKOVER  
\*\* SAME AS SE, BUT NOT LESS THAN 4.0%

LEGEND

- ① EXISTING 1 1/2" BITUMINOUS CONCRETE SURFACE COURSE, MIXTURE D, CLASS I
- ② EXISTING 2 1/2" BITUMINOUS CONCRETE BINDER COURSE
- ③ EXISTING 10" BITUMINOUS BASE COURSE
- ④ EXISTING 4" SUB BASE GRANULAR MATERIAL, TYPE A
- ⑤ EXISTING 8" BITUMINOUS SHOULDER
- ⑥ BITUMINOUS CONCRETE CURB
- ⑦ EXISTING CONCRETE BARRIER, DOUBLE FACE
- ⑧ EXISTING 4" BITUMINOUS CONCRETE SURFACE COURSE, MIXTURE C, CLASS I
- ⑨ EXISTING PIPE UNDERDRAIN, 4"
- ⑩ EXISTING STEEL PLATE BEAM GUARDRAIL, TYPE A
- ⑪ EXISTING 4'-6" CHAIN LINK FENCE
- ⑫ EXISTING BACKFILL
- ⑬ PROPOSED BITUMINOUS SURFACE REMOVAL 1 1/2"
- ⑭ PROPOSED BITUMINOUS SURFACE 1 1/2"
- ⑮ PROPOSED BITUMINOUS SHOULDER 1 1/2"
- ⑯ EXISTING CONCRETE MEDIAN SURFACE 4" (TYPE P)
- ⑰ EXISTING SANDFILL
- ⑱ EXISTING COMBINATION CONCRETE CURB AND GUTTER, TYPE B-9.24
- ⑲ EXISTING LEVELING BINDER

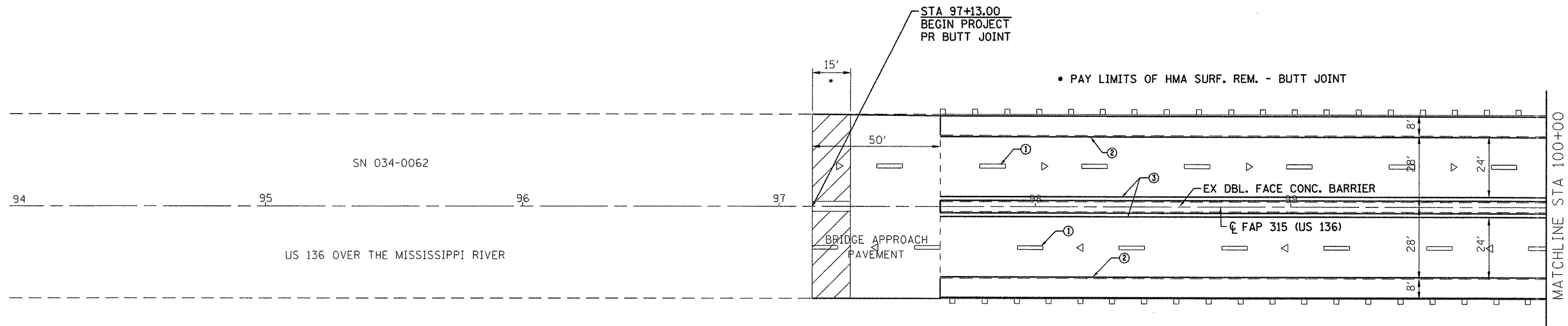
FILE NAME = C:\Projects\6603400\shdtypicals.dgn	USER NAME = leughnrl	DESIGNED -	REVISED -
		DRAWN -	REVISED -
	PLOT SCALE = 10.0000' / IN.	CHECKED -	REVISED -
	PLOT DATE = Jul-09-2008 11:59:55AM	DATE -	REVISED -

STATE OF ILLINOIS  
DEPARTMENT OF TRANSPORTATION

TYPICAL CROSS SECTION			
SCALE:	SHEET NO.	OF SHEETS	STA. TO STA.

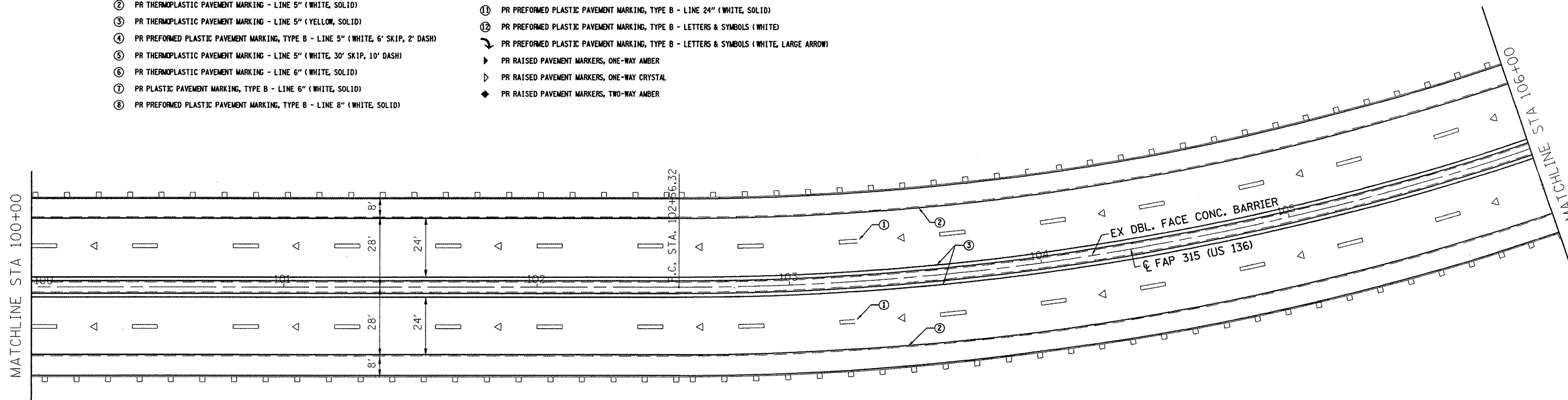
F.A.P. RTE.	SECTION	COUNTY	TOTAL SHEETS	SHEET NO.
315	23 RS-2	HANCOCK	15	8
CONTRACT NO. 72C31				
FED. ROAD DIST. NO. ILLINOIS FED. AID PROJECT				





**PAVEMENT MARKING LEGEND**

- |   |  |
|---|--|
| ① PR PREFORMED PLASTIC PAVEMENT MARKING, TYPE B - LINE 5" (WHITE, 30' SKIP, 10' DASH) | ⑨ PR PREFORMED PLASTIC PAVEMENT MARKING, TYPE B - LINE 12" (WHITE, SOLID)                |
| ② PR THERMOPLASTIC PAVEMENT MARKING - LINE 5" (WHITE, SOLID)                          | ⑩ PR PREFORMED PLASTIC PAVEMENT MARKING, TYPE B - LINE 12" (YELLOW, SOLID)               |
| ③ PR THERMOPLASTIC PAVEMENT MARKING - LINE 5" (YELLOW, SOLID)                         | ⑪ PR PREFORMED PLASTIC PAVEMENT MARKING, TYPE B - LINE 24" (WHITE, SOLID)                |
| ④ PR PREFORMED PLASTIC PAVEMENT MARKING, TYPE B - LINE 5" (WHITE, 6' SKIP, 2' DASH)   | ⑫ PR PREFORMED PLASTIC PAVEMENT MARKING, TYPE B - LETTERS & SYMBOLS (WHITE)              |
| ⑤ PR THERMOPLASTIC PAVEMENT MARKING - LINE 5" (WHITE, 30' SKIP, 10' DASH)             | ➤ PR PREFORMED PLASTIC PAVEMENT MARKING, TYPE B - LETTERS & SYMBOLS (WHITE, LARGE ARROW) |
| ⑥ PR THERMOPLASTIC PAVEMENT MARKING - LINE 6" (WHITE, SOLID)                          | ▶ PR RAISED PAVEMENT MARKERS, ONE-WAY AMBER  |
| ⑦ PR PLASTIC PAVEMENT MARKING, TYPE B - LINE 6" (WHITE, SOLID)                        | ▷ PR RAISED PAVEMENT MARKERS, ONE-WAY CRYSTAL  |
| ⑧ PR PREFORMED PLASTIC PAVEMENT MARKING, TYPE B - LINE 8" (WHITE, SOLID)              | ◆ PR RAISED PAVEMENT MARKERS, TWO-WAY AMBER  |



FILE NAME = C:\Projects\603408\shplan\_94-117.dgn

USER NAME = leughjinn1	DESIGNED -	REVISED -
PLOT SCALE = 40.0000' / IN.	DRAWN -	REVISED -
PLOT DATE = Jul-09-2008 11:59:57AM	CHECKED -	REVISED -
	DATE -	REVISED -

**STATE OF ILLINOIS  
DEPARTMENT OF TRANSPORTATION**

**PLAN VIEW**

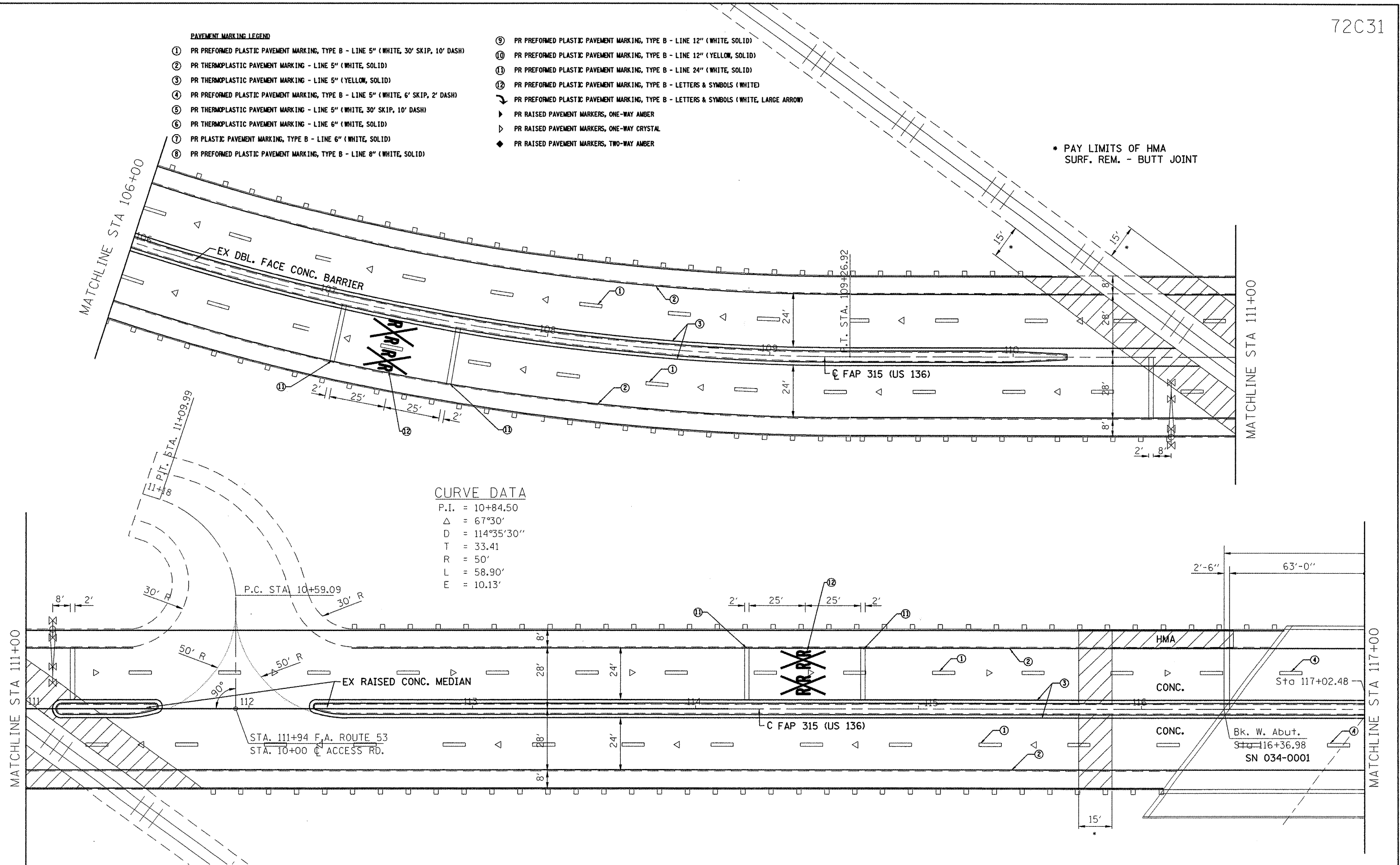
SCALE: SHEET NO. OF SHEETS STA. TO STA.

F.A.P. RTE. 315	SECTION 23 RS-2	COUNTY HANCOCK	TOTAL SHEETS 15	SHEET NO. 9
FED. ROAD DIST. NO. ILLINOIS FED. AID PROJECT				
<b>CONTRACT NO. 72C31</b>				

**PAVEMENT MARKING LEGEND**

- ① PR PREFORMED PLASTIC PAVEMENT MARKING, TYPE B - LINE 5" (WHITE, 30' SKIP, 10' DASH)
- ② PR THERMOPLASTIC PAVEMENT MARKING - LINE 5" (WHITE, SOLID)
- ③ PR THERMOPLASTIC PAVEMENT MARKING - LINE 5" (YELLOW, SOLID)
- ④ PR PREFORMED PLASTIC PAVEMENT MARKING, TYPE B - LINE 5" (WHITE, 6' SKIP, 2' DASH)
- ⑤ PR THERMOPLASTIC PAVEMENT MARKING - LINE 5" (WHITE, 30' SKIP, 10' DASH)
- ⑥ PR THERMOPLASTIC PAVEMENT MARKING - LINE 6" (WHITE, SOLID)
- ⑦ PR PLASTIC PAVEMENT MARKING, TYPE B - LINE 6" (WHITE, SOLID)
- ⑧ PR PREFORMED PLASTIC PAVEMENT MARKING, TYPE B - LINE 8" (WHITE, SOLID)
- ⑨ PR PREFORMED PLASTIC PAVEMENT MARKING, TYPE B - LINE 12" (WHITE, SOLID)
- ⑩ PR PREFORMED PLASTIC PAVEMENT MARKING, TYPE B - LINE 12" (YELLOW, SOLID)
- ⑪ PR PREFORMED PLASTIC PAVEMENT MARKING, TYPE B - LINE 24" (WHITE, SOLID)
- ⑫ PR PREFORMED PLASTIC PAVEMENT MARKING, TYPE B - LETTERS & SYMBOLS (WHITE)
- PR PREFORMED PLASTIC PAVEMENT MARKING, TYPE B - LETTERS & SYMBOLS (WHITE, LARGE ARROW)
- ▶ PR RAISED PAVEMENT MARKERS, ONE-WAY AMBER
- ▷ PR RAISED PAVEMENT MARKERS, ONE-WAY CRYSTAL
- ◆ PR RAISED PAVEMENT MARKERS, TWO-WAY AMBER

\* PAY LIMITS OF HMA SURF. REM. - BUTT JOINT



**CURVE DATA**

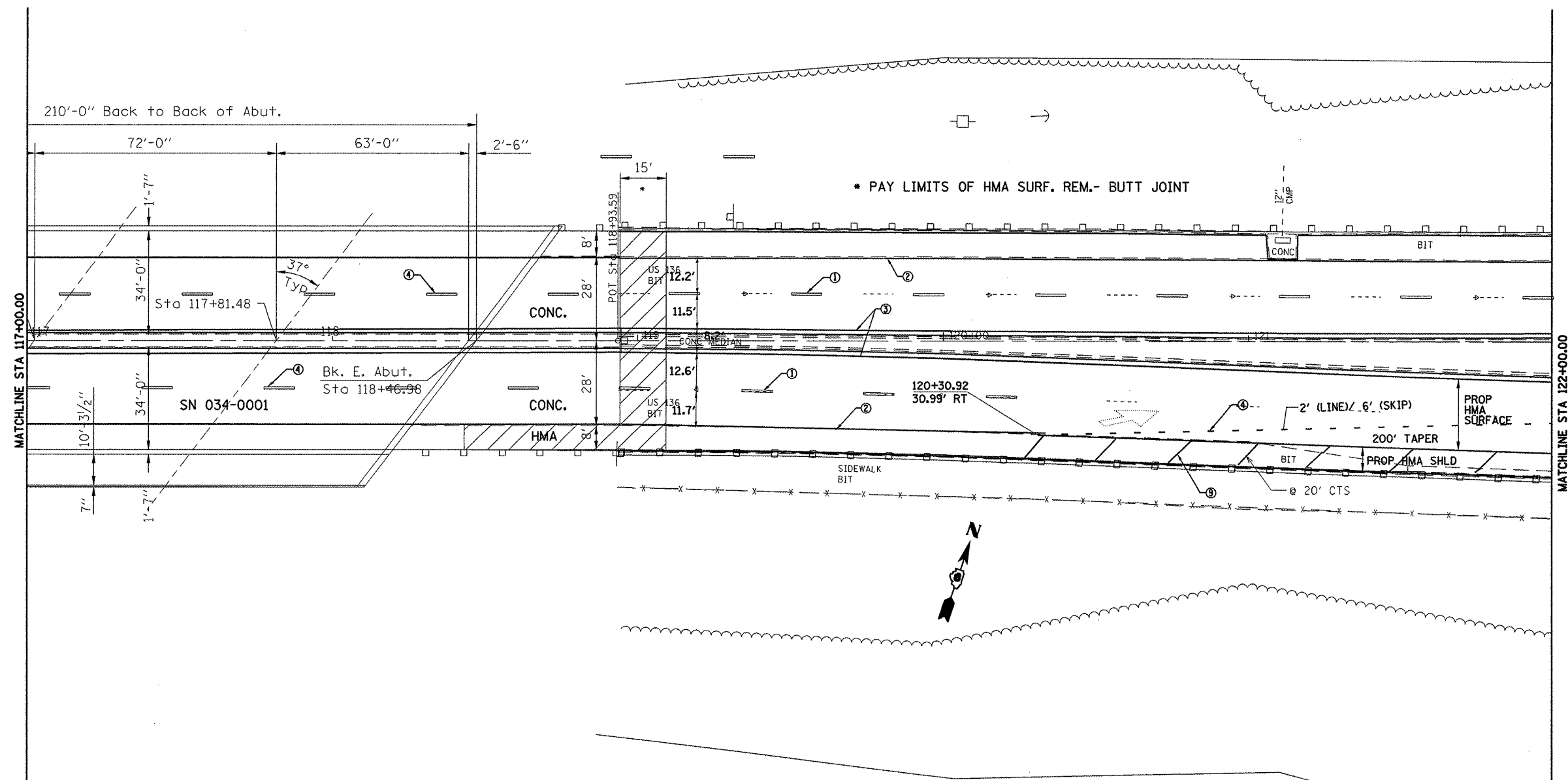
P.I. = 10+84.50  
 Δ = 67°30'  
 D = 114°35'30"  
 T = 33.41  
 R = 50'  
 L = 58.90'  
 E = 10.13'

FILE NAME =	USER NAME = laughlinr1	DESIGNED -	REVISED -
C:\Projects\603408\shplan_94-117.dgn		DRAWN -	REVISED -
		CHECKED -	REVISED -
		DATE -	REVISED -

**STATE OF ILLINOIS  
DEPARTMENT OF TRANSPORTATION**

<b>PLAN VIEW</b>			
SCALE:	SHEET NO.	OF SHEETS	STA. TO STA.

F.A.P. RTE.	SECTION	COUNTY	TOTAL SHEETS	SHEET NO.
315	23 RS-2	HANCOCK	15	10
CONTRACT NO. 72C31				
FED. ROAD DIST. NO. ILLINOIS FED. AID PROJECT				



- PAVEMENT MARKING LEGEND**
- ① PR PREFORMED PLASTIC PAVEMENT MARKING, TYPE B - LINE 5" (WHITE, 30' SKIP, 10' DASH)
  - ② PR THERMOPLASTIC PAVEMENT MARKING - LINE 5" (WHITE, SOLID)
  - ③ PR THERMOPLASTIC PAVEMENT MARKING - LINE 5" (YELLOW, SOLID)
  - ④ PR PREFORMED PLASTIC PAVEMENT MARKING, TYPE B - LINE 5" (WHITE, 6' SKIP, 2' DASH)
  - ⑤ PR THERMOPLASTIC PAVEMENT MARKING - LINE 5" (WHITE, 30' SKIP, 10' DASH)
  - ⑥ PR THERMOPLASTIC PAVEMENT MARKING - LINE 6" (WHITE, SOLID)
  - ⑦ PR PLASTIC PAVEMENT MARKING, TYPE B - LINE 6" (WHITE, SOLID)
  - ⑧ PR PREFORMED PLASTIC PAVEMENT MARKING, TYPE B - LINE 8" (WHITE, SOLID)
  - ⑨ PR PREFORMED PLASTIC PAVEMENT MARKING, TYPE B - LINE 12" (WHITE, SOLID)
  - ⑩ PR PREFORMED PLASTIC PAVEMENT MARKING, TYPE B - LINE 12" (YELLOW, SOLID)
  - ⑪ PR PREFORMED PLASTIC PAVEMENT MARKING, TYPE B - LINE 24" (WHITE, SOLID)
  - ⑫ PR PREFORMED PLASTIC PAVEMENT MARKING, TYPE B - LETTERS & SYMBOLS (WHITE)
  - PR PREFORMED PLASTIC PAVEMENT MARKING, TYPE B - LETTERS & SYMBOLS (WHITE, LARGE ARROW)
  - ▶ PR RAISED PAVEMENT MARKERS, ONE-WAY AMBER
  - ▷ PR RAISED PAVEMENT MARKERS, ONE-WAY CRYSTAL
  - ◆ PR RAISED PAVEMENT MARKERS, TWO-WAY AMBER

FILE NAME =	USER NAME = laughlinr1	DESIGNED -	REVISED -
C:\Projects\603400\shp\planb001.dgn		DRAWN -	REVISED -
		CHECKED -	REVISED -
		DATE -	REVISED -

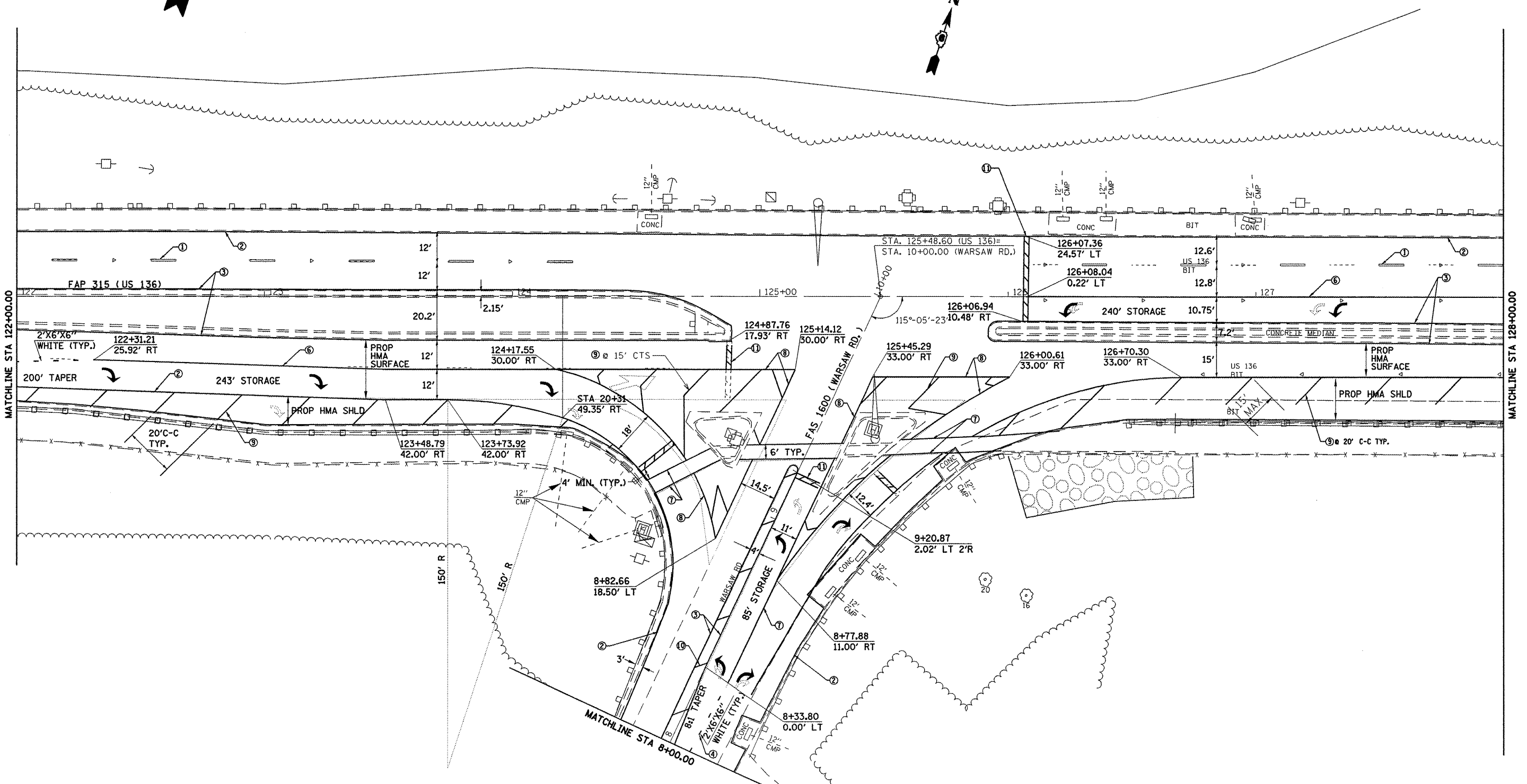
**STATE OF ILLINOIS  
DEPARTMENT OF TRANSPORTATION**

<b>PLAN VIEW</b>			
SCALE:	SHEET NO.	OF	SHEETS
			STA. 117+00.00 TO STA. 122+00.00

F.A.P. RTE.	SECTION	COUNTY	TOTAL SHEETS	SHEET NO.
315	23 RS-2	HANCOCK	15	11
FED. ROAD DIST. NO. ILLINOIS FED. AID PROJECT			CONTRACT NO. 72C31	

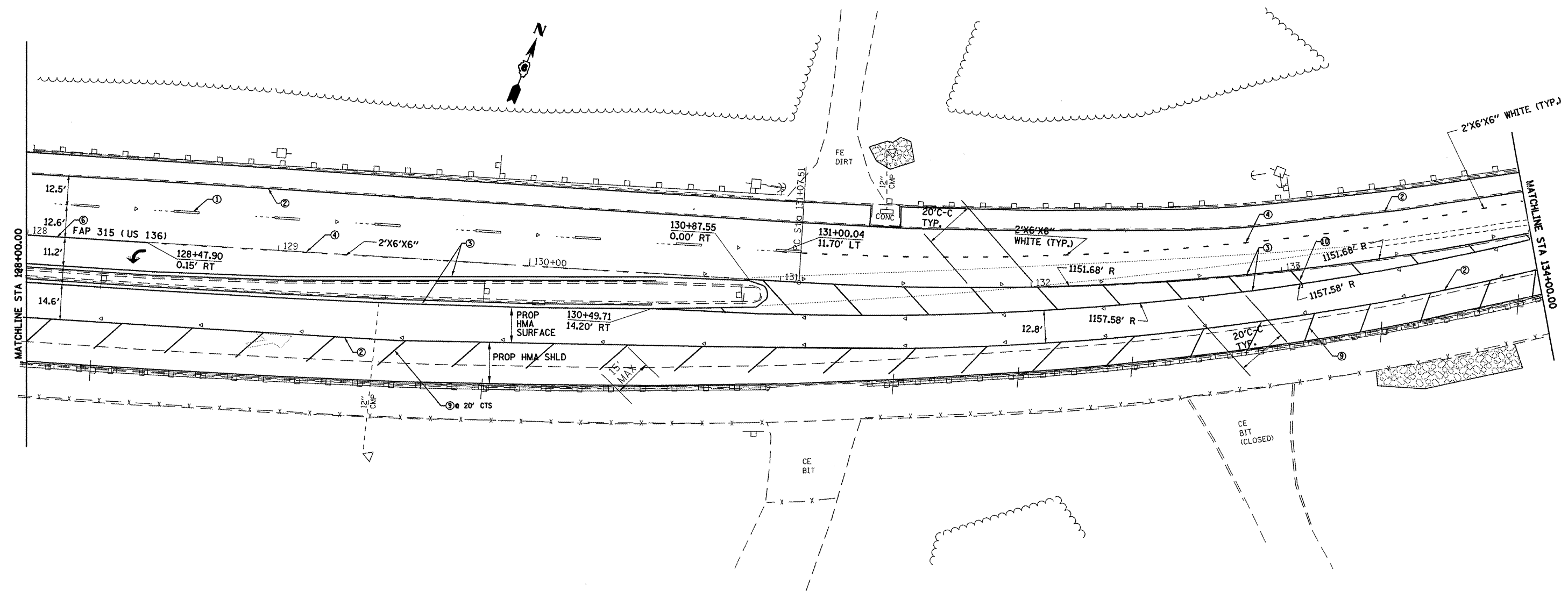
**PAVEMENT MARKING LEGEND**

- ① PR PREFORMED PLASTIC PAVEMENT MARKING, TYPE B - LINE 5" (WHITE, 30' SKIP, 10' DASH)
- ② PR THERMOPLASTIC PAVEMENT MARKING - LINE 5" (WHITE, SOLID)
- ③ PR THERMOPLASTIC PAVEMENT MARKING - LINE 5" (YELLOW, SOLID)
- ④ PR PREFORMED PLASTIC PAVEMENT MARKING, TYPE B - LINE 5" (WHITE, 6' SKIP, 2' DASH)
- ⑤ PR THERMOPLASTIC PAVEMENT MARKING - LINE 5" (WHITE, 30' SKIP, 10' DASH)
- ⑥ PR THERMOPLASTIC PAVEMENT MARKING - LINE 6" (WHITE, SOLID)
- ⑦ PR PLASTIC PAVEMENT MARKING, TYPE B - LINE 6" (WHITE, SOLID)
- ⑧ PR PREFORMED PLASTIC PAVEMENT MARKING, TYPE B - LINE 8" (WHITE, SOLID)
- ⑨ PR PREFORMED PLASTIC PAVEMENT MARKING, TYPE B - LINE 12" (WHITE, SOLID)
- ⑩ PR PREFORMED PLASTIC PAVEMENT MARKING, TYPE B - LINE 12" (YELLOW, SOLID)
- ⑪ PR PREFORMED PLASTIC PAVEMENT MARKING, TYPE B - LINE 24" (WHITE, SOLID)
- ⑫ PR PREFORMED PLASTIC PAVEMENT MARKING, TYPE B - LETTERS & SYMBOLS (WHITE)
- PR PREFORMED PLASTIC PAVEMENT MARKING, TYPE B - LETTERS & SYMBOLS (WHITE, LARGE ARROW)
- ▶ PR RAISED PAVEMENT MARKERS, ONE-WAY AMBER
- ▷ PR RAISED PAVEMENT MARKERS, ONE-WAY CRYSTAL
- ◆ PR RAISED PAVEMENT MARKERS, TWO-WAY AMBER



FILE NAME = C:\Projects\4603408\shlolanb001.dgn	USER NAME = loughlinr	DESIGNED -	REVISED -	<b>STATE OF ILLINOIS DEPARTMENT OF TRANSPORTATION</b>	<b>PLAN VIEW</b>	F.A.P. RTE. 315	SECTION 23 RS-2	COUNTY HANCOCK	TOTAL SHEETS 15	SHEET NO. 12	
PLOT SCALE = 40.0000' / IN.						SCALE: SHEET NO. OF SHEETS STA. 122+00.00 TO STA. 128+00.00					
PLOT DATE = Jul-09-2008 12:00:04PM						FED. ROAD DIST. NO. ILLINOIS FED. AID PROJECT					
DATE -						CONTRACT NO. 72C31					

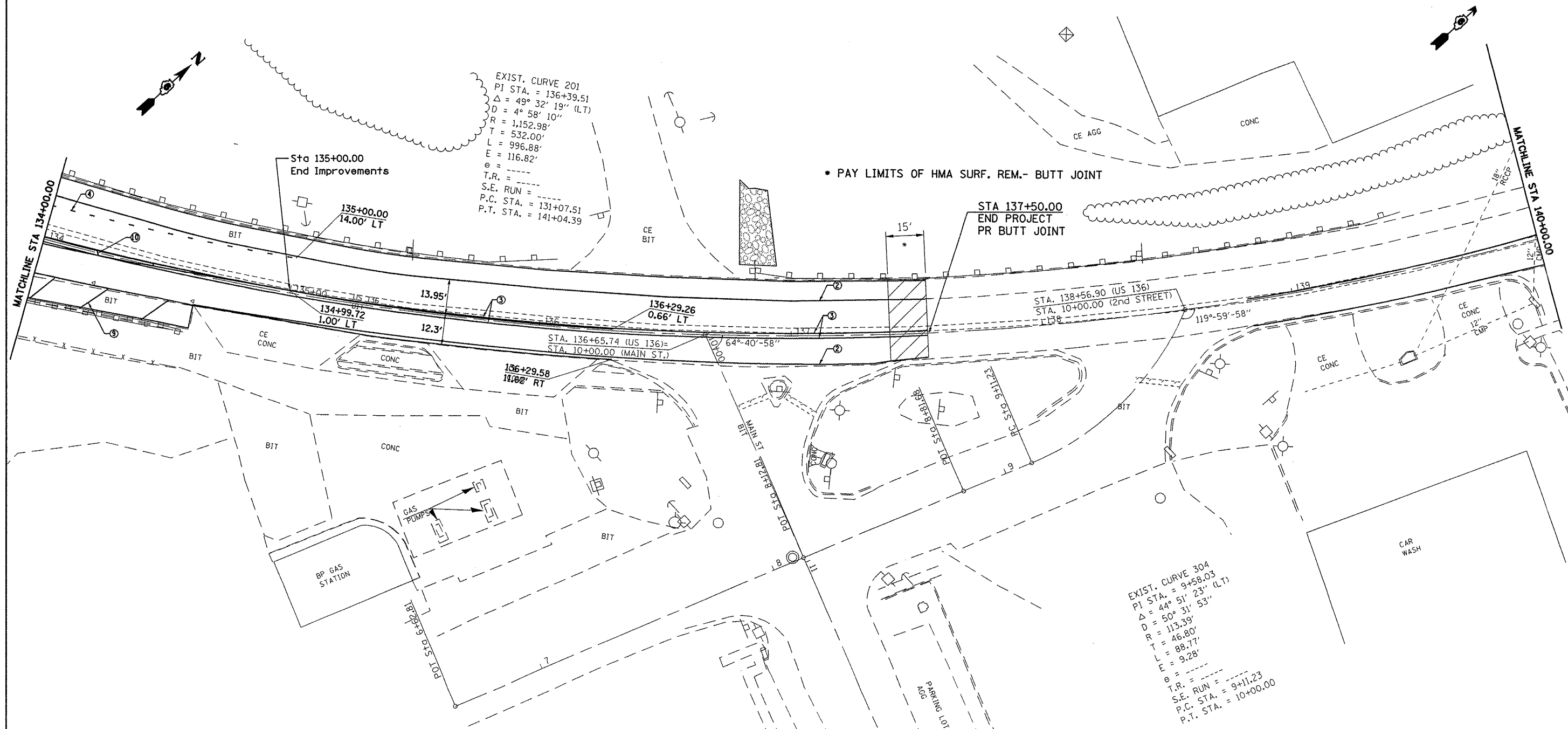
- PAVEMENT MARKING LEGEND**
- ① PR PREFORMED PLASTIC PAVEMENT MARKING, TYPE B - LINE 5" (WHITE, 30' SKIP, 10' DASH)
  - ② PR THERMOPLASTIC PAVEMENT MARKING - LINE 5" (WHITE, SOLID)
  - ③ PR THERMOPLASTIC PAVEMENT MARKING - LINE 5" (YELLOW, SOLID)
  - ④ PR PREFORMED PLASTIC PAVEMENT MARKING, TYPE B - LINE 5" (WHITE, 6' SKIP, 2' DASH)
  - ⑤ PR THERMOPLASTIC PAVEMENT MARKING - LINE 5" (WHITE, 30' SKIP, 10' DASH)
  - ⑥ PR THERMOPLASTIC PAVEMENT MARKING - LINE 6" (WHITE, SOLID)
  - ⑦ PR PLASTIC PAVEMENT MARKING, TYPE B - LINE 6" (WHITE, SOLID)
  - ⑧ PR PREFORMED PLASTIC PAVEMENT MARKING, TYPE B - LINE 8" (WHITE, SOLID)
  - ⑨ PR PREFORMED PLASTIC PAVEMENT MARKING, TYPE B - LINE 12" (WHITE, SOLID)
  - ⑩ PR PREFORMED PLASTIC PAVEMENT MARKING, TYPE B - LINE 12" (YELLOW, SOLID)
  - ⑪ PR PREFORMED PLASTIC PAVEMENT MARKING, TYPE B - LINE 24" (WHITE, SOLID)
  - ⑫ PR PREFORMED PLASTIC PAVEMENT MARKING, TYPE B - LETTERS & SYMBOLS (WHITE)
  - PR PREFORMED PLASTIC PAVEMENT MARKING, TYPE B - LETTERS & SYMBOLS (WHITE, LARGE ARROW)
  - ▶ PR RAISED PAVEMENT MARKERS, ONE-WAY AMBER
  - ▷ PR RAISED PAVEMENT MARKERS, ONE-WAY CRYSTAL
  - ◆ PR RAISED PAVEMENT MARKERS, TWO-WAY AMBER



FILE NAME = C:\Projects\4603400\shp\arlb001.dgn	USER NAME = laughlinr	DESIGNED -	REVISED -	<b>STATE OF ILLINOIS DEPARTMENT OF TRANSPORTATION</b>	<b>PLAN VIEW</b>		F.A.P. RTE. 315	SECTION 23 RS-2	COUNTY HANCOCK	TOTAL SHEETS 15	SHEET NO. 13	
	PLOT SCALE = 40.0000' / IN.	DRAWN -	REVISED -		SCALE:	SHEET NO. OF SHEETS	STA. 128+00.00 TO STA. 134+00.00	CONTRACT NO. 72C31				
	PLOT DATE = Jul-09-2008 12:00:07PM	CHECKED -	REVISED -					FED. ROAD DIST. NO. ILLINOIS FED. AID PROJECT				
		DATE -	REVISED -									

**PAVEMENT MARKING LEGEND**

- ① PR PREFORMED PLASTIC PAVEMENT MARKING, TYPE B - LINE 5" (WHITE, 30' SKIP, 10' DASH)
- ② PR THERMOPLASTIC PAVEMENT MARKING - LINE 5" (WHITE, SOLID)
- ③ PR THERMOPLASTIC PAVEMENT MARKING - LINE 5" (YELLOW, SOLID)
- ④ PR PREFORMED PLASTIC PAVEMENT MARKING, TYPE B - LINE 5" (WHITE, 6' SKIP, 2' DASH)
- ⑤ PR THERMOPLASTIC PAVEMENT MARKING - LINE 5" (WHITE, 30' SKIP, 10' DASH)
- ⑥ PR THERMOPLASTIC PAVEMENT MARKING - LINE 6" (WHITE, SOLID)
- ⑦ PR PLASTIC PAVEMENT MARKING, TYPE B - LINE 6" (WHITE, SOLID)
- ⑧ PR PREFORMED PLASTIC PAVEMENT MARKING, TYPE B - LINE 8" (WHITE, SOLID)
- ⑨ PR PREFORMED PLASTIC PAVEMENT MARKING, TYPE B - LINE 12" (WHITE, SOLID)
- ⑩ PR PREFORMED PLASTIC PAVEMENT MARKING, TYPE B - LINE 12" (YELLOW, SOLID)
- ⑪ PR PREFORMED PLASTIC PAVEMENT MARKING, TYPE B - LINE 24" (WHITE, SOLID)
- ⑫ PR PREFORMED PLASTIC PAVEMENT MARKING, TYPE B - LETTERS & SYMBOLS (WHITE)
- ➔ PR PREFORMED PLASTIC PAVEMENT MARKING, TYPE B - LETTERS & SYMBOLS (WHITE, LARGE ARROW)
- ▶ PR RAISED PAVEMENT MARKERS, ONE-WAY AMBER
- ▷ PR RAISED PAVEMENT MARKERS, ONE-WAY CRYSTAL
- ◆ PR RAISED PAVEMENT MARKERS, TWO-WAY AMBER



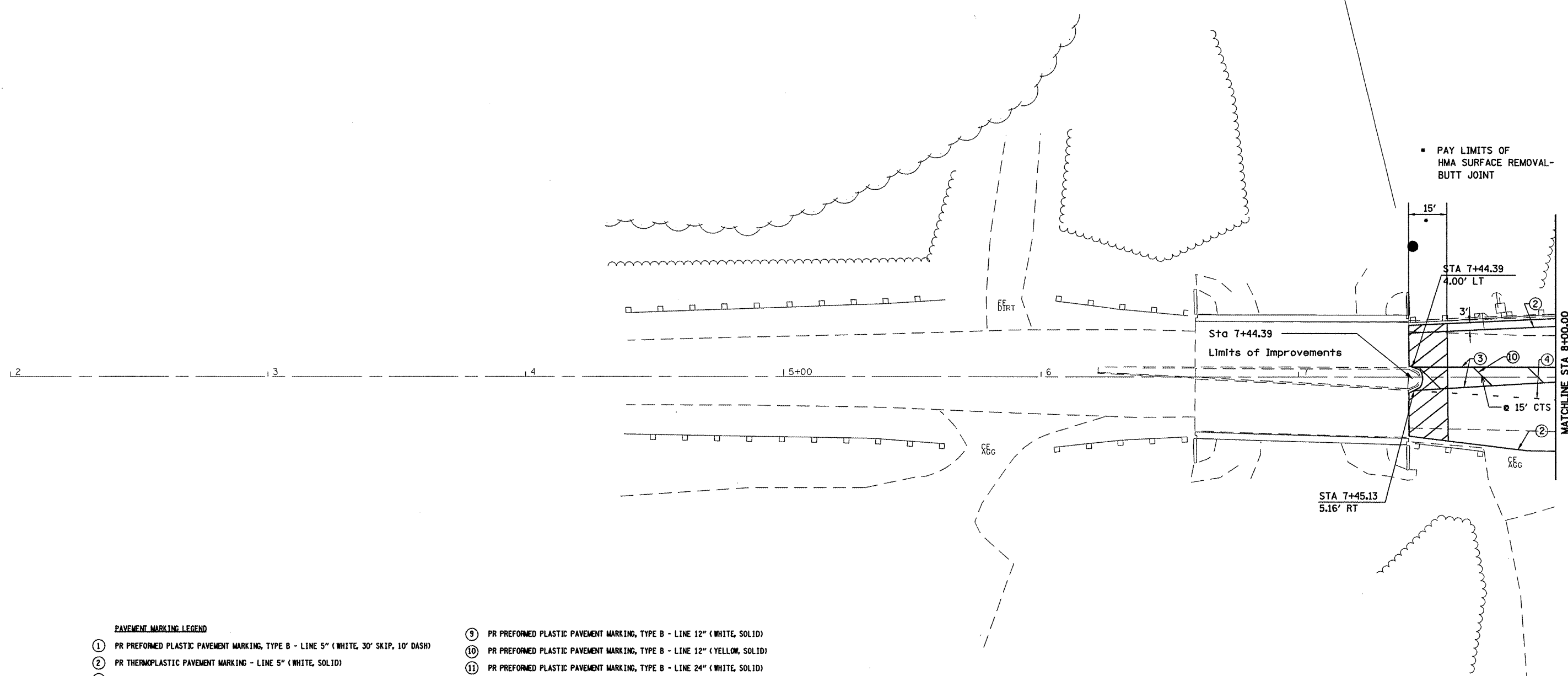
FILE NAME = C:\Projects\603400\shp\planb001.dgn	USER NAME = laughlinr1	DESIGNED -	REVISED -
		DRAWN -	REVISED -
PLOT SCALE = 40.0000' / IN.		CHECKED -	REVISED -
PLOT DATE = Jul-09-2008 12:00:10PM		DATE -	REVISED -

**STATE OF ILLINOIS  
DEPARTMENT OF TRANSPORTATION**

**PLAN VIEW**

SCALE: SHEET NO. OF SHEETS STA. 134+00.00 TO STA. 140+00.00

F.A.P. RTE. 315	SECTION 23 RS-2	COUNTY HANCOCK	TOTAL SHEETS 15	SHEET NO. 14
CONTRACT NO. 72C31				
FED. ROAD DIST. NO. ILLINOIS FED. AID PROJECT				



**PAVEMENT MARKING LEGEND**

- |   |  |
|---|--|
| ① PR PREFORMED PLASTIC PAVEMENT MARKING, TYPE B - LINE 5" (WHITE, 30' SKIP, 10' DASH) | ⑨ PR PREFORMED PLASTIC PAVEMENT MARKING, TYPE B - LINE 12" (WHITE, SOLID)                |
| ② PR THERMOPLASTIC PAVEMENT MARKING - LINE 5" (WHITE, SOLID)                          | ⑩ PR PREFORMED PLASTIC PAVEMENT MARKING, TYPE B - LINE 12" (YELLOW, SOLID)               |
| ③ PR THERMOPLASTIC PAVEMENT MARKING - LINE 5" (YELLOW, SOLID)                         | ⑪ PR PREFORMED PLASTIC PAVEMENT MARKING, TYPE B - LINE 24" (WHITE, SOLID)                |
| ④ PR PREFORMED PLASTIC PAVEMENT MARKING, TYPE B - LINE 5" (WHITE, 6' SKIP, 2' DASH)   | ⑫ PR PREFORMED PLASTIC PAVEMENT MARKING, TYPE B - LETTERS & SYMBOLS (WHITE)              |
| ⑤ PR THERMOPLASTIC PAVEMENT MARKING - LINE 5" (WHITE, 30' SKIP, 10' DASH)             | ➤ PR PREFORMED PLASTIC PAVEMENT MARKING, TYPE B - LETTERS & SYMBOLS (WHITE, LARGE ARROW) |
| ⑥ PR THERMOPLASTIC PAVEMENT MARKING - LINE 6" (WHITE, SOLID)                          | ▶ PR RAISED PAVEMENT MARKERS, ONE-WAY AMBER  |
| ⑦ PR PLASTIC PAVEMENT MARKING, TYPE B - LINE 6" (WHITE, SOLID)                        | ▷ PR RAISED PAVEMENT MARKERS, ONE-WAY CRYSTAL  |
| ⑧ PR PREFORMED PLASTIC PAVEMENT MARKING, TYPE B - LINE 8" (WHITE, SOLID)              | ◆ PR RAISED PAVEMENT MARKERS, TWO-WAY AMBER  |

FILE NAME = C:\Projects\603408\shplone045.dgn	USER NAME = laughtonr1	DESIGNED -	REVISED -
		DRAWN -	REVISED -
		CHECKED -	REVISED -
		DATE -	REVISED -

**STATE OF ILLINOIS  
DEPARTMENT OF TRANSPORTATION**

<b>PLAN VIEW</b>			
SCALE:	SHEET NO.	OF SHEETS	STA. TO STA. 8+00.00

F.A.P. RTE. 315	SECTION 23 RS-2	COUNTY HANCOCK	TOTAL SHEETS 15	SHEET NO. 15
CONTRACT NO. 72C31				
FED. ROAD DIST. NO. ILLINOIS FED. AID PROJECT				