

STAGE 2 SUGGESTED SEQUENCE OF OPERATIONS

1. MAINTAIN ACCESS TO ENTRANCE AT RT STATION 457+67 AT ALL TIMES.
2. REMOVE STAGE 2 PORTION OF THE EXISTING PAVEMENT WHILE MAINTAINING TWO-WAY TRAFFIC.
3. CONSTRUCT EARTHWORK AND PROPOSED PAVEMENT FOR THE STAGE 2 PORTION.

NOTES:

1. THIS TRAFFIC CONTROL WILL BE PAID FOR AT THE CONTRACT UNIT PRICE LUMP SUM FOR TRAFFIC CONTROL AND PROTECTION, (SPECIAL). THIS PRICE SHALL INCLUDE ANY TRAFFIC CONTROL STANDARDS AND ALL TRAFFIC CONTROL WORK REQUIRED FOR STAGES 1, 2, 3, AND 4.

PAVEMENT REMOVAL

|         |    |        |             |
|---------|----|--------|-------------|
| 456+69  | TO | 458+09 | 309.0 SQ YD |
| TOTAL = |    |        | 309.0 SQ YD |

AGGREGATE BASE COURSE, TYPE B 8"

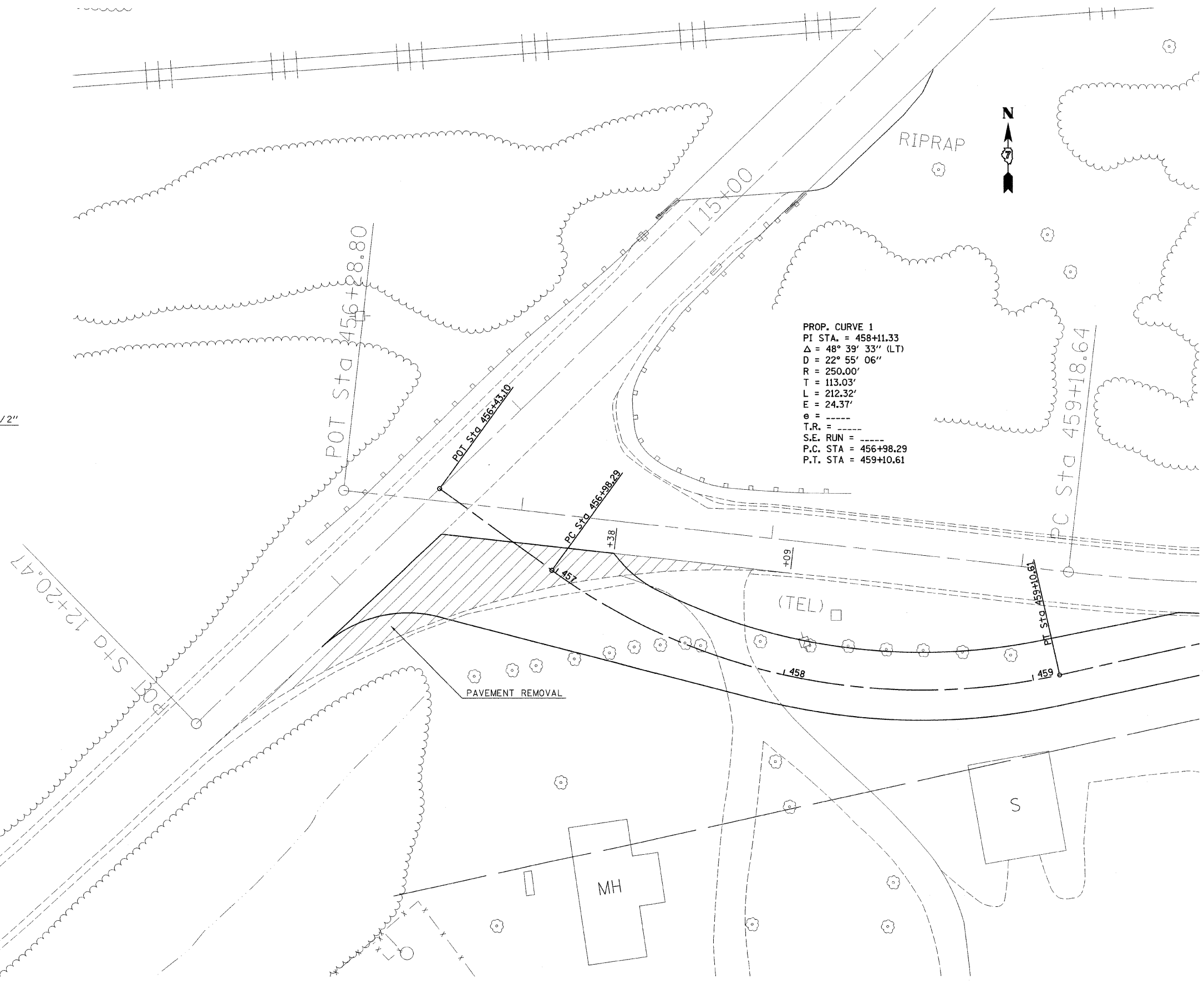
|         |    |        |              |
|---------|----|--------|--------------|
| 456+69  | TO | 461+80 | 1291.0 SQ YD |
| TOTAL = |    |        | 1291.0 SQ YD |

HOT-MIX ASPHALT PAVEMENT (FULL-DEPTH), 9 1/2"

|         |    |        |              |
|---------|----|--------|--------------|
| 456+69  | TO | 461+80 | 1291.0 SQ YD |
| TOTAL = |    |        | 1291.0 SQ YD |

TEMPORARY ACCESS (PRIVATE ENTRANCE)

|                  |          |
|------------------|----------|
| 457+67           | 1.0 EACH |
| TOTAL = 1.0 EACH |          |



|                                       |                     |            |           |   |                              |                    |                         |                               |                     |                           |  |
|---------------------------------------|---------------------|------------|-----------|---|------------------------------|--------------------|-------------------------|-------------------------------|---------------------|---------------------------|--|
| FILE NAME =                           | USER NAME = swartzw | DESIGNED - | REVISED - | <b>STATE OF ILLINOIS<br/>DEPARTMENT OF TRANSPORTATION</b> | <b>STAGE II CONSTRUCTION</b> | F.A.S. RTE.        | SECTION                 | COUNTY                        | TOTAL SHEETS        | SHEET NO.                 |  |
| c:\projects\74057d\shstage2_74057.dgn |                     | DRAWN -    | REVISED - |   |                              | 2793               | 10,P,YRS-1              | FAYETTE                       | 52                  | 39                        |  |
| PLOT SCALE = 20.0000' / IN.           |                     | CHECKED -  | REVISED - |   |                              | CONTRACT NO. 74057 |                         |                               |                     |                           |  |
| PLOT DATE = 5/14/2008                 |                     | DATE -     | REVISED - |   |                              | SCALE: 20          | SHEET NO. 1 OF 2 SHEETS | STA. 456+43.10 TO STA. 459+50 | FED. ROAD DIST. NO. | ILLINOIS FED. AID PROJECT |  |