

STAGE 4 SUGGESTED SEQUENCE OF OPERATIONS

1. MILL AREA PATCHED IN STAGE 1 TO MATCH PROPOSED CROSS SLOPE.
2. PLACE SURFACE COURSE FROM STATION 465+57 TO STATION 462+00.
3. SAWCUT AND REMOVE THE EXISTING PAVEMENT AND CONSTRUCT EARTHWORK.
4. CONSTRUCT CONCRETE GUTTER, TYPE A.
5. REMOVE EXISTING GUARDRAIL AND CONSTRUCT PROPOSED GUARDRAIL.
6. CONSTRUCT PROPOSED PRIVATE ENTRANCE AT STATION 458+08.

NOTES:

1. THIS TRAFFIC CONTROL WILL BE PAID FOR AT THE CONTRACT UNIT PRICE LUMP SUM FOR TRAFFIC CONTROL AND PROTECTION, (SPECIAL). THIS PRICE SHALL INCLUDE ANY TRAFFIC CONTROL STANDARDS AND ALL TRAFFIC CONTROL WORK REQUIRED FOR STAGES 1, 2, 3, AND 4.

HOT-MIX ASPHALT SURFACE REMOVAL, VARIABLE DEPTH

| | | | |
|---------|----|--------|-------------|
| 456+57 | TO | 457+16 | 253.3 SQ YD |
| TOTAL = | | | 253.3 SQ YD |

PAVEMENT REMOVAL

| | | | |
|---------|----|--------|-------------|
| 457+31 | TO | 461+65 | 843.0 SQ YD |
| TOTAL = | | | 843.0 SQ YD |

CONCRETE GUTTER, TYPE B

| | | | |
|-----------|----|--------|-------------|
| LT 456+57 | TO | 462+70 | 669.0 FOOT |
| RT 456+57 | TO | 462+70 | 718.0 FOOT |
| TOTAL = | | | 1387.0 FOOT |

HOT-MIX ASPHALT SURFACE COURSE, MIX "C", N70

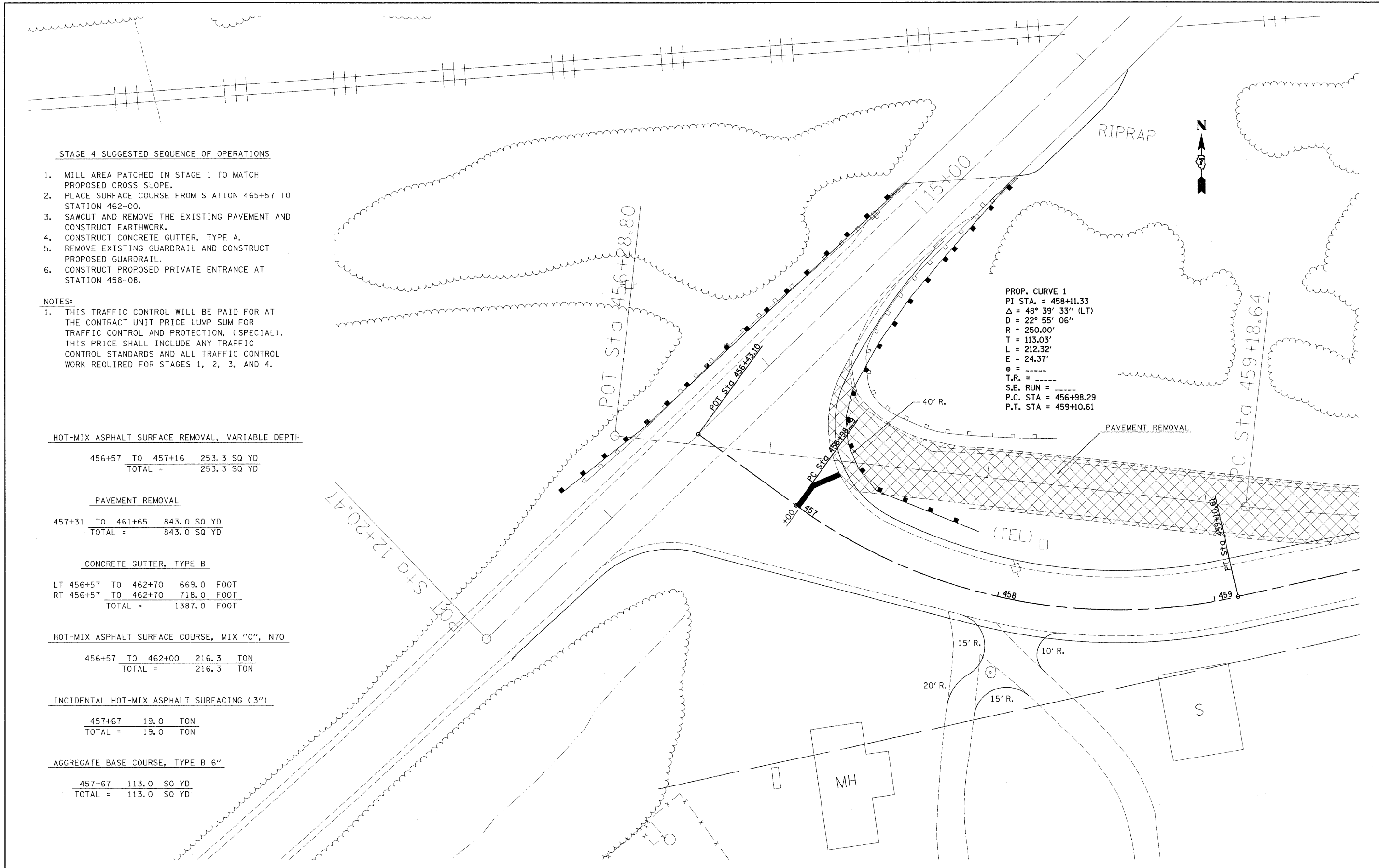
| | | | |
|---------|----|--------|-----------|
| 456+57 | TO | 462+00 | 216.3 TON |
| TOTAL = | | | 216.3 TON |

INCIDENTAL HOT-MIX ASPHALT SURFACING (3")

| | |
|---------|----------|
| 457+67 | 19.0 TON |
| TOTAL = | 19.0 TON |

AGGREGATE BASE COURSE, TYPE B 6"

| | |
|---------|-------------|
| 457+67 | 113.0 SQ YD |
| TOTAL = | 113.0 SQ YD |



| | | | | | | | | | | | | | |
|---------------------------------------|----------------------|------------------|-----------|---|------------------------------|-------------------------|-------------------------------|--------------------|-------------|---------|--------------|-----------|--|
| FILE NAME = | USER NAME = swortzrw | DESIGNED - | REVISED - | STATE OF ILLINOIS DEPARTMENT OF TRANSPORTATION | STAGE IV CONSTRUCTION | | | F.A.S. RTE. | SECTION | COUNTY | TOTAL SHEETS | SHEET NO. | |
| c:\projects\74057d\shstage4_74057.dgn | | DRAWN - | REVISED - | | SCALE: 20 | SHEET NO. 1 OF 2 SHEETS | STA. 456+43.10 TO STA. 459+50 | 2793 | (O,P,YRS-1) | FAYETTE | 52 | 43 | |
| | | CHECKED - | REVISED - | | | | | | | | | | |
| | | DATE = 5/14/2008 | REVISED - | | | | | | | | | | |
| | | | | | | | | CONTRACT NO. 74057 | | | | | |