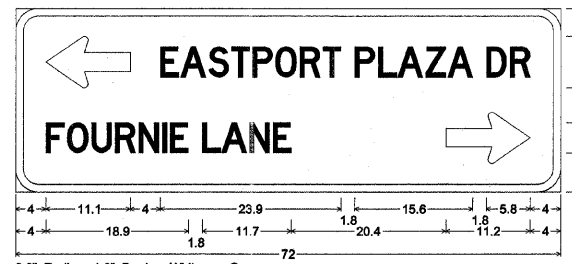
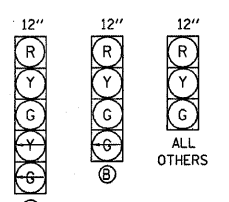


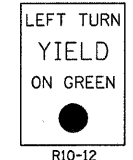
3.0" Radius, 1.0" Border, White on Green;
Standard Arrow Custom 11.1" X 6.8" 180°; [FOURNIE LANE] D 45% spacing;
[EASTPORT PLAZA DR] D 45% spacing; Standard Arrow Custom 11.1" X 6.8" 0°;
STREET NAME SIGN
DETAIL E
NOT TO SCALE



3.0" Radius, 1.0" Border, White on Green;
Standard Arrow Custom 11.1" X 6.8" 180°; [EASTPORT PLAZA DR] D 45% spacing;
[FOURNIE LANE] D 45% spacing; Standard Arrow Custom 11.1" X 6.8" 0°;
STREET NAME SIGN
DETAIL F
NOT TO SCALE



PROPOSED TRAFFIC SIGNAL FACES



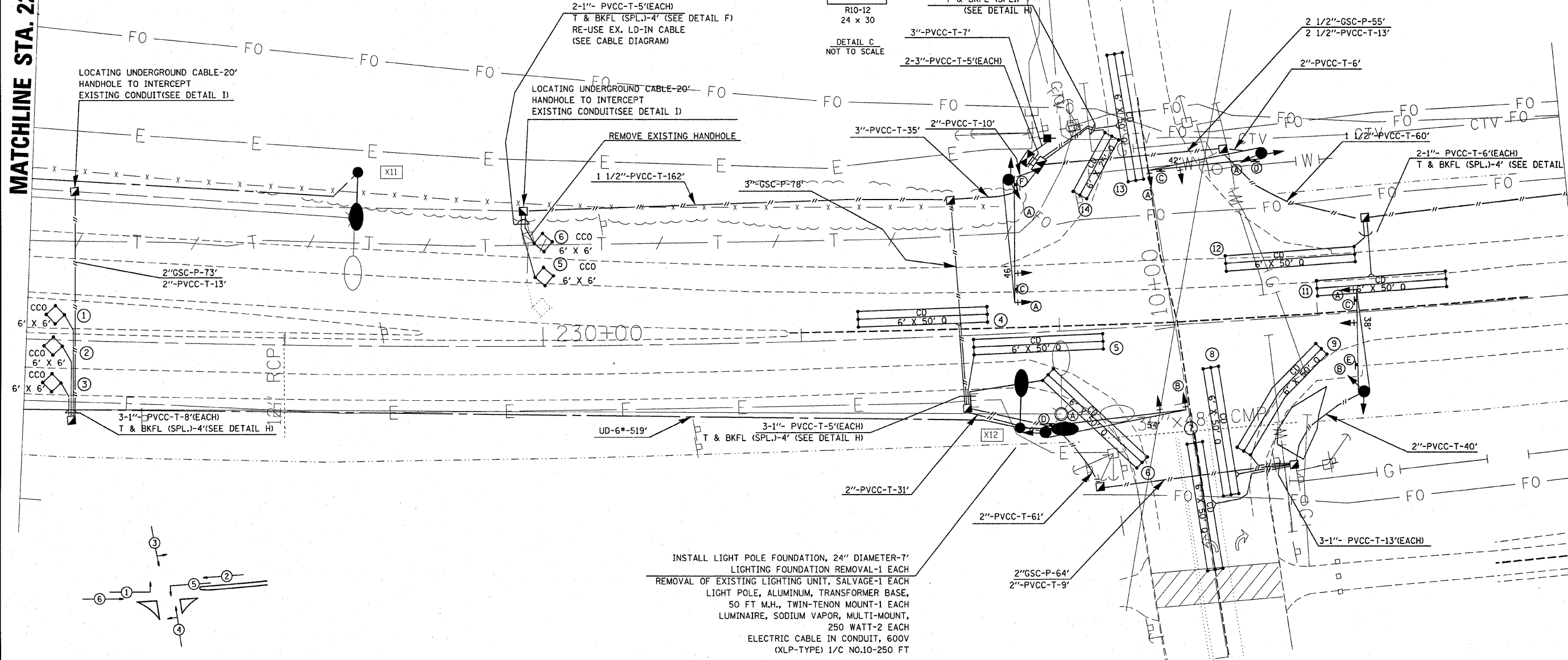
LEFT TURN YIELD ON GREEN
R10-12
24 X 30
DETAIL C
NOT TO SCALE



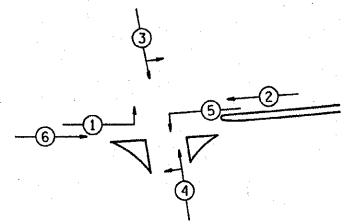
3.0" Radius, 1.0" Border, White on Green;
[HORSESHOE] D; [LAKE ROAD] D;
STREET NAME SIGN
DETAIL D
NOT TO SCALE

MATCHLINE STA. 228 + 00

MATCHLINE STA. 234 + 00



INSTALL LIGHT POLE FOUNDATION, 24" DIAMETER-7'
LIGHTING FOUNDATION REMOVAL-1 EACH
REMOVAL OF EXISTING LIGHTING UNIT, SALVAGE-1 EACH
LIGHT POLE, ALUMINUM, TRANSFORMER BASE,
50 FT M.H., TWIN-TENON MOUNT-1 EACH
LUMINAIRE, SODIUM VAPOR, MULTI-MOUNT,
250 WATT-2 EACH
ELECTRIC CABLE IN CONDUIT, 600V
(XLP-TYPE) 1/C NO.10-250 FT



PHASE DESIGNATION DIAGRAM

FULL-ACTUATED CONTROLLER TYPE IV CABINET W/ TRANSCEIVER

PROPOSED SEQUENCE OF OPERATION								
PHASE	1	2	3	4	5	6	7	8
MOVEMENT	→	←	↔	↔	↔	↔	NOT	NOT
CONCURRENT MOVEMENT PERMITTED	5 OR 6	5 OR 6	NONE	NONE	1 OR 2	1 OR 2	USED	USED

FILE NAME =	USER NAME = keplerol	DESIGNED -	REVISED -
ct:\projects\view\ed09707\electrical\tspl09707a.dgn		DRAWN -	REVISED -
PLOT SCALE = 28,0000 ' / IN.		CHECKED -	REVISED -
PLOT DATE = 3/17/2008		DATE -	REVISED -

STATE OF ILLINOIS
DEPARTMENT OF TRANSPORTATION

EASTPORT PLAZA DRIVE /FOURNIE LANE
LIGHTING AND TRAFFIC SIGNAL PLAN

SCALE: _____ SHEET NO. 6 OF 9 SHEETS STA. _____ TO STA. _____

F.A.U. RTE.	SECTION	COUNTY	TOTAL SHEETS	SHEET NO.
9111	73-15TS	MADISON	64	40
FED. ROAD DIST. NO. - ILLINOIS FED. AID PROJECT			CONTRACT NO. 76B22	