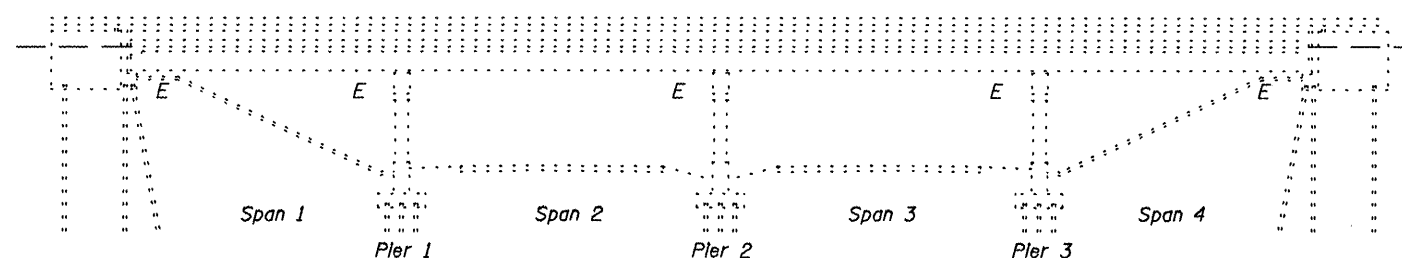


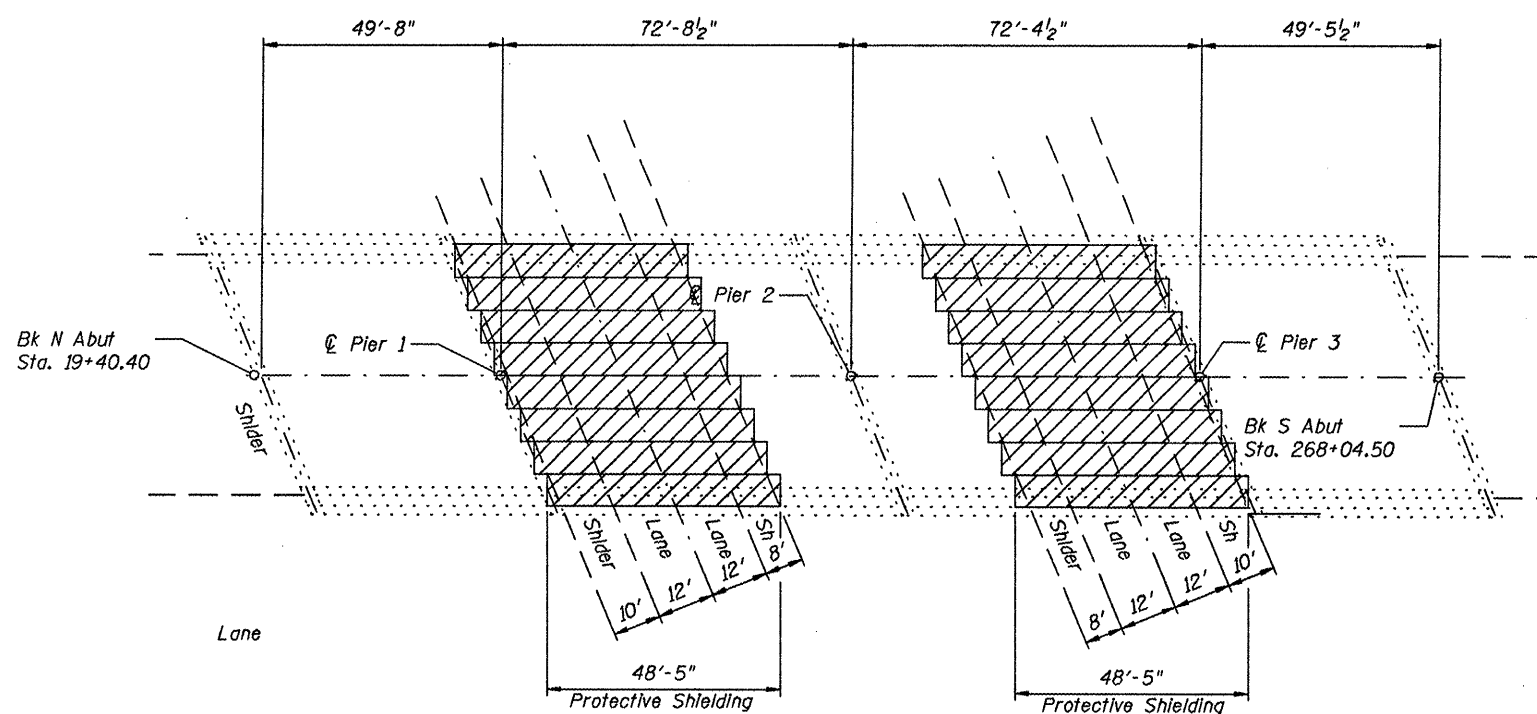
STATE OF ILLINOIS  
DEPARTMENT OF TRANSPORTATION

ROUTE NO.	SECTION	COUNTY	TOTAL SHEETS	SHEET NO.	SHEET NO.
US 40 FAS 779	*	Various	8	5	5 SHEETS
FED. ROAD DIST. NO. 7	ILLINOIS	FED. AID PROJECT			

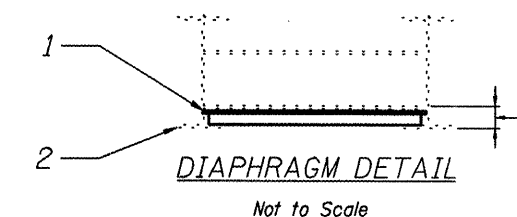
\* Dist 8 Bridge Rehab 2009-1  
Contract # 76B90



ELEVATION  
1" = 20'

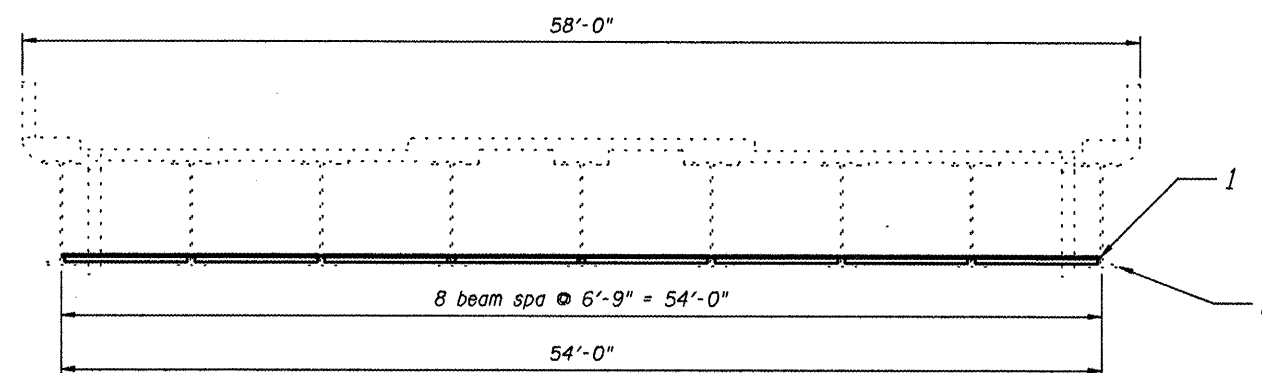


PLAN  
1" = 20'



DIAPHRAGM DETAIL

Not to Scale



CROSS SECTION  
1" = 5'

- LEGEND
1. PROTECTIVE SHIELDING (PERMANENT)
  2. EXISTING W36X135

ILLINOIS DEPARTMENT OF TRANSPORTATION  
STRUCTURE DETAILS  
SN 003-0015  
US 40/FAS 779 OVER I-70 EB/WB  
DIST 8 BRIDGE REHAB 2009-01  
BOND, MADISON AND ST. CLAIR COUNTIES

DESIGNED	BJW
CHECKED	JAU
DRAWN	BJW
CHECKED	JAU

200	ENGINEER OF BRIDGE DESIGN
PASSED	ENGINEER OF BRIDGES AND STRUCTURES