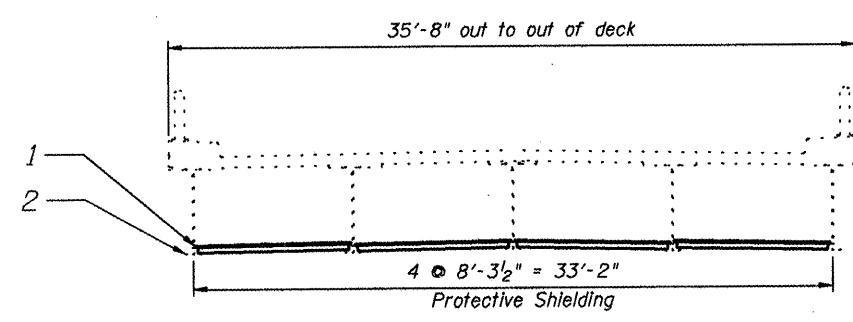
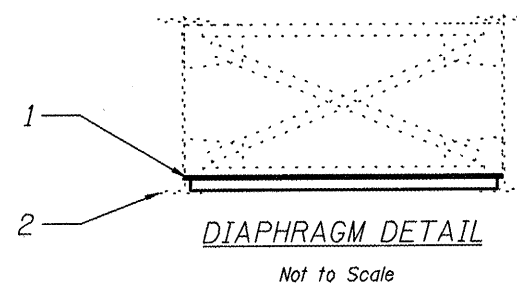
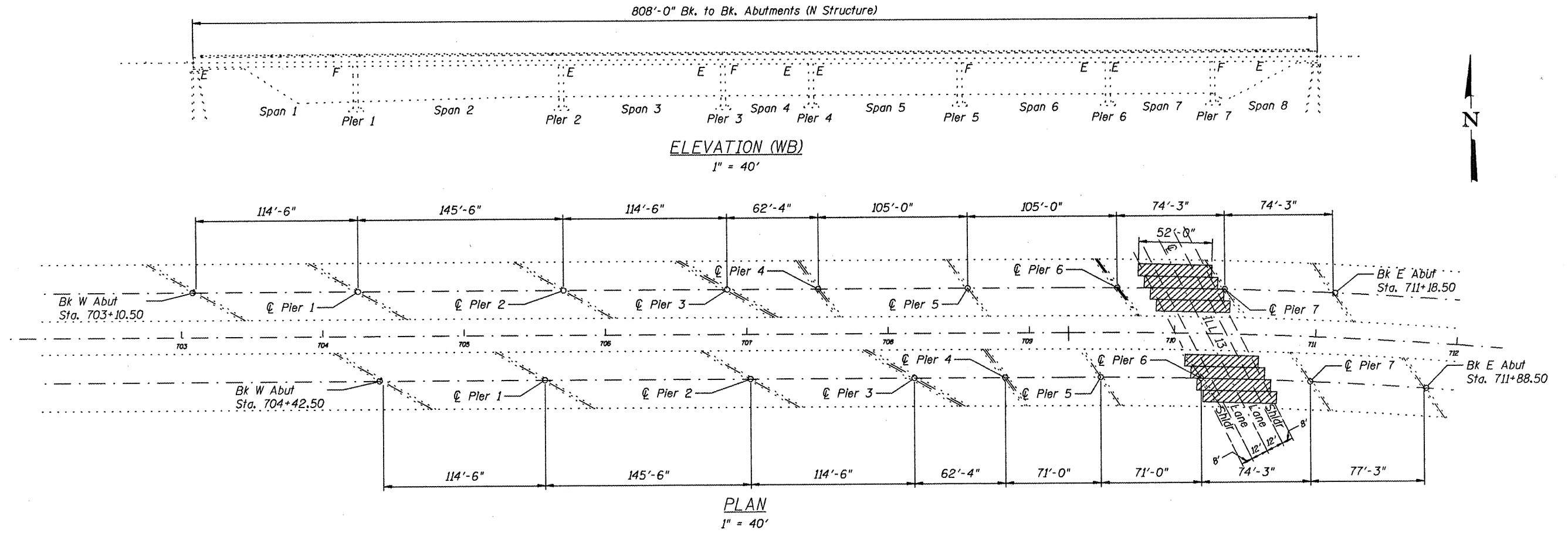


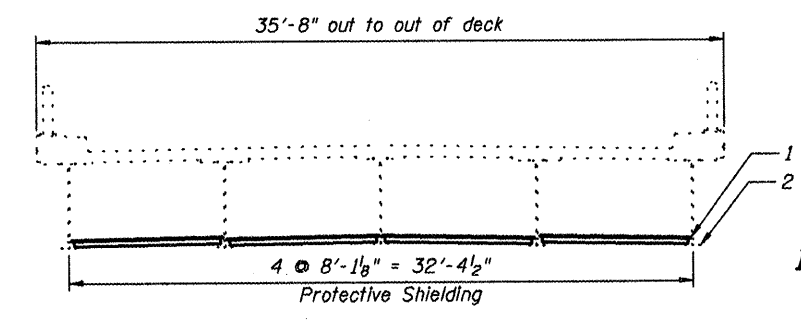
STATE OF ILLINOIS
DEPARTMENT OF TRANSPORTATION

ROUTE NO.	SECTION	COUNTY	SHEET NO.	SHEET NO.
ILL 15	*	Various	8	7
FED. ROAD DIST. NO. 7	ILLINOIS	FED. AID PROJECT		

* Dist 8 Bridge Rehab 2009-1
Contract # 76B90



CROSS SECTION
1" = 5'



CROSS SECTION
1" = 5'

LEGEND
1. PROTECTIVE SHIELDING (PERMANENT)
2. EXISTING GIRDER

DESIGNED	BJW	200
CHECKED	JAU	ENGINEER OF BRIDGE DESIGN
DRAWN	BJW	ENGINEER OF BRIDGES AND STRUCTURES
CHECKED	JAU	

ILLINOIS DEPARTMENT OF TRANSPORTATION
STRUCTURE DETAILS
SN 082-0051 & 0052
ILL 15 EB/WB OVER ILL 13
DIST 8 BRIDGE REHAB 2009-01
BOND, MADISON AND ST. CLAIR COUNTIES