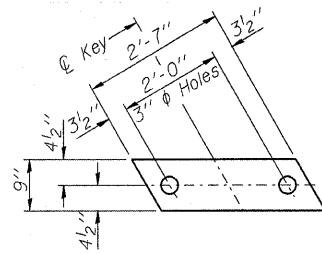


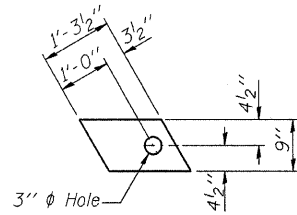
STATE OF ILLINOIS
DEPARTMENT OF TRANSPORTATION

ROUTE NO.	SECTION	COUNTY	TOTAL SHEETS	SHEET NO.	SHEET NO. 7
F.A.P. 885	107BR-1	Johnson	94	28	19 SHEETS
FED. ROAD DIST. NO. 7		ILLINOIS	FED. AID PROJECT		

Contract #78030



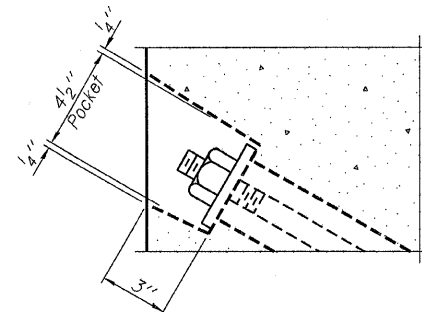
FABRIC BEARING PAD
(Interior)



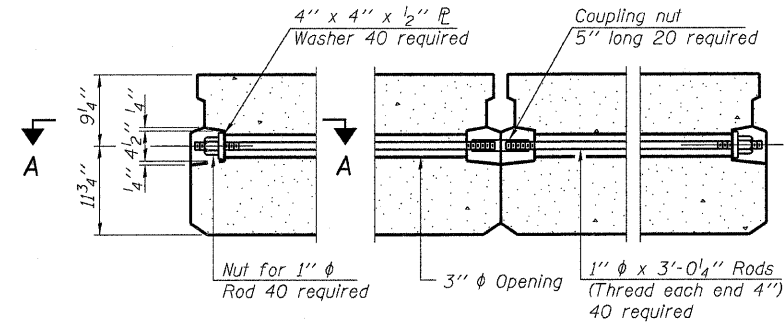
FABRIC BEARING PAD
(Exterior)

FIXED

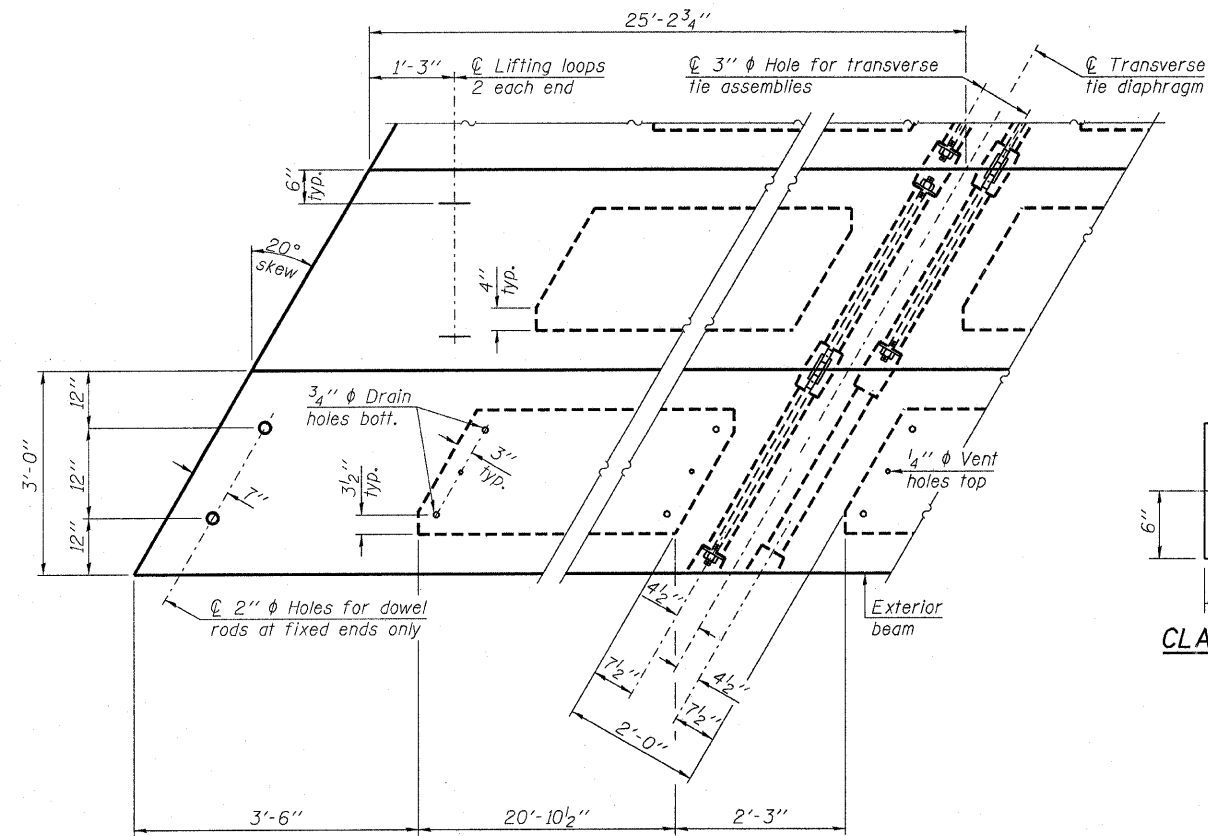
Note: Omit holes when using expansion bearings.



SECTION A-A

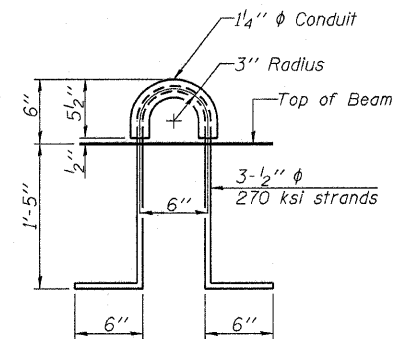


TYPICAL TRANSVERSE TIE ASSEMBLY

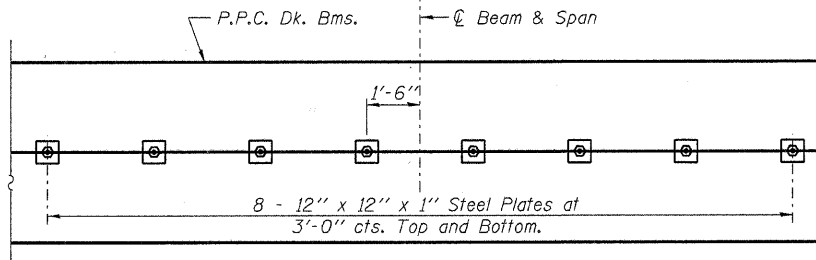


PLAN VIEW

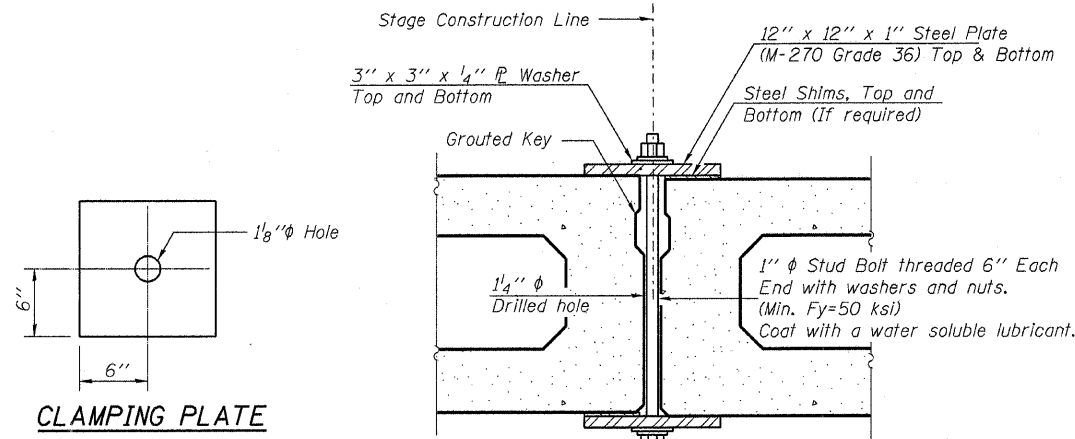
Note: Connect beams in pairs with the transverse tie configuration shown.



LIFTING LOOP DETAIL



PLAN



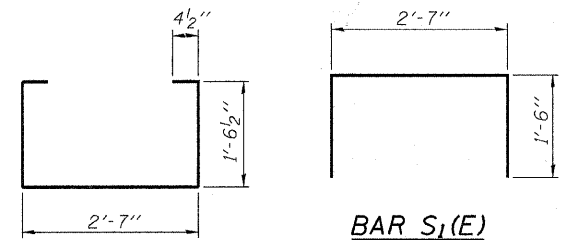
SECTION

SHEAR KEY CLAMPING DETAILS AT STAGE CONST. JT.

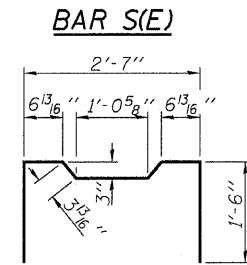
Note: Cost Included with Precast Prestressed Concrete Deck Beams (21" Depth).

NOTES

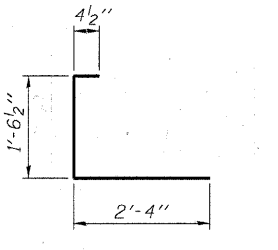
Prestressing steel shall be uncoated high strength, low relaxation 7-wire strand, Grade 270. The nominal diameter shall be 1/2" and the nominal cross-sectional area shall be 0.153 sq. in. The 1" rods in the transverse tie assembly shall be tightened to a snug fit and the threads set. Pockets on exterior faces of bridge shall be filled with grout after transverse tie assembly is in place.
Reinforcement bars shall conform to ASTM A 706 (IL MOD), Grade 60. (See Special Provisions)
Two 1/8" fabric adjusting shims of the dimensions of the exterior bearing pad shall be provided for each bearing pad location.
A minimum 2 1/2" lifting pin shall be used to engage the lifting loops during handling.
Corrosion Inhibitor, per Article 1020.05(b)(12) and 1021.06 of the Standard Specifications, shall be used in the concrete for precast prestressed concrete deck beams.
Compressive strength of prestressed concrete, f'c, shall be 6000 psi.
Compressive strength of prestressed concrete at release, f'ci, shall be 5000 psi.
See Sheet 2 & 9 of 19 for location of rail anchors, drain anchors and additional details.
The drain anchors and rail anchors shall be cast in the beams at the locations shown on Sheet 2 of 19.



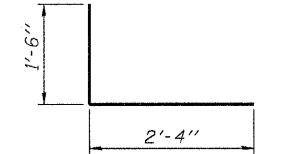
BAR S1(E)



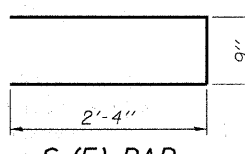
BAR S2(E)



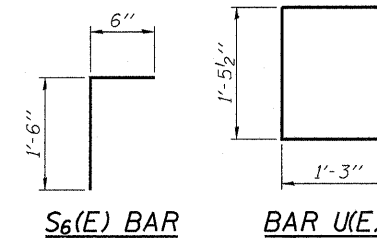
BAR S3(E)



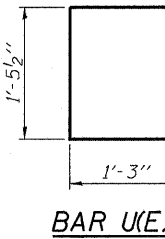
BAR S4(E)



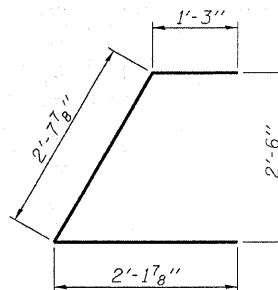
S5(E) BAR



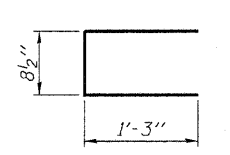
S6(E) BAR



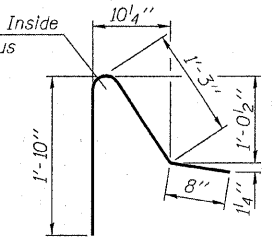
BAR U(E)



BAR U1(E)



U2(E) BAR



D(E) BAR

BILL OF MATERIAL

ITEM	UNIT	QUANTITY
Precast Prestressed Concrete Deck Beams (21" Depth)	Sq. Ft.	3,330

HAMPTON, LENZINI & RENWICK, INC.
CIVIL & STRUCTURAL ENGINEERS
LAND SURVEYORS

3085 STEVENSON DRIVE, SUITE 201
SPRINGFIELD, ILLINOIS 62703
(217) 546-3400

ELGIN • **SPRINGFIELD**

PROJECT NUMBER: 12-52-0007-1 DATE: 04/02/08
DESIGNED: S.M.S. CHECKED: M.D.C. DRAWN: D.T.M.

SUPERSTRUCTURE DETAILS

IL. ROUTE 146 OVER CACHE RIVER
F.A.P. ROUTE 885 / SECTION 107BR-1
JOHNSON COUNTY
STATION 727+23.00
STRUCTURE NO. 044-0014