

STATE OF ILLINOIS  
DEPARTMENT OF TRANSPORTATION

ROUTE NO.	SECTION	COUNTY	TOTAL SHEETS	SHEET NO.	SHEET NO. 10 16 SHEETS
F.A.P. 885	111BR-1	Johnson	94	69	
FED. ROAD DIST. NO. 7	ILLINOIS	FED. AID PROJECT-			

Contract #78030

**NOTES**

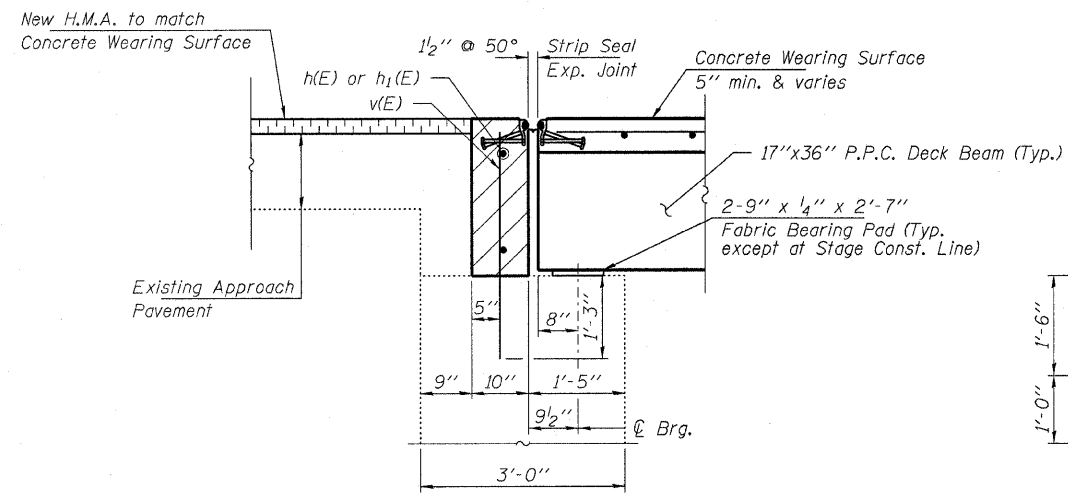
After beams have been erected, holes shall be drilled into substructure and dowel rods placed. Dowel holes shall be filled with non-shrink grout to top of beam and allowed to cure min. 24 hours prior to grouting the shear keys.

Concrete wearing surface to be poured after grouting the shear keys.

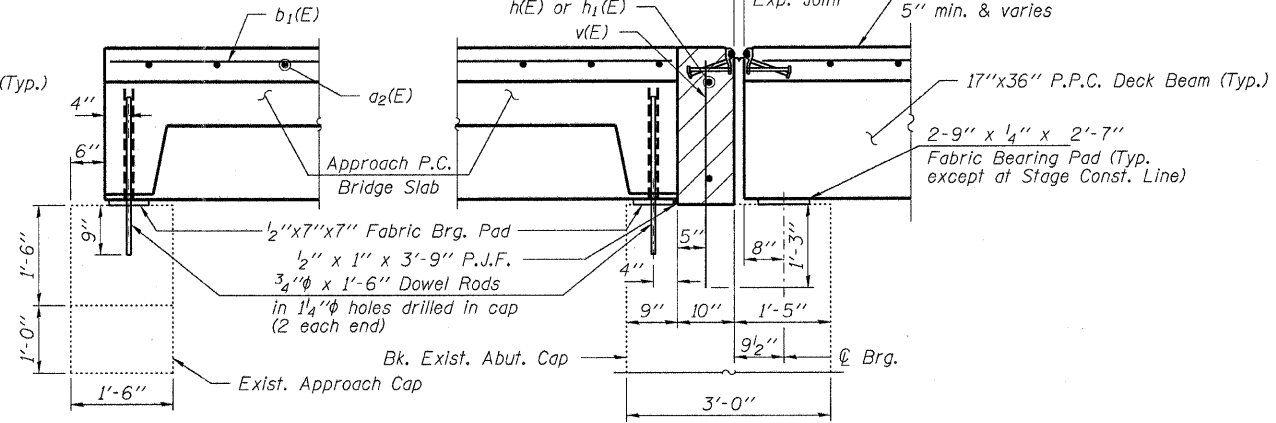
Dowel rods drilled in cap are included in the cost of Precast Prestressed Concrete Deck Beams (17" depth) or Precast Concrete Bridge Slabs.

Anchor bolts shall be ASTM F1554 all-thread (or an Engineer approved alternate material) of the grade(s) and diameter(s) specified. ASTM A307 Grade C anchor bolts may be used in lieu of ASTM F1554 Grade 36 (Fy=36ksi). The corresponding specified grade of AASHTO M314 anchor bolts may be used in lieu of ASTM F1554.

Drilled and set anchor bolts shall be installed according to Article 521.06 of the Standard Specifications.

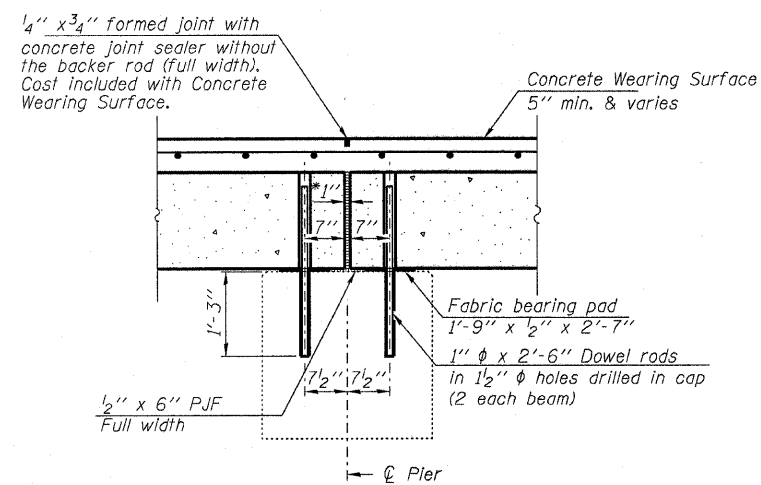


**SECTION THRU ABUTMENTS**  
@ RDWY.



**SECTION THRU APPROACH CAP**

**SECTION THRU ABUTMENTS**  
@ OUTSIDE BEAMS



**SECTION THRU FIXED PIER**

\* 1" Jt. shall be filled with non-shrink grout. 1" dimension may vary to accommodate tolerance in beam lengths.

**HAMPTON, LENZINI & RENWICK, INC.**  
CIVIL & STRUCTURAL ENGINEERS  
LAND SURVEYORS

3085 STEVENSON DRIVE, SUITE 201  
SPRINGFIELD, ILLINOIS 62703  
(217) 546-3400

ELGIN • SPRINGFIELD

PROJECT NUMBER: 12-52-0007-1 DATE: 04/02/08  
DESIGNED: P.S.L. CHECKED: M.D.C. DRAWN: D.T.M.

**SUPERSTRUCTURE & APPROACH DETAILS**

IL. ROUTE 146 OVER BELL POND  
F.A.P. ROUTE 885 / SECTION 111BR-1  
JOHNSON COUNTY  
STATION 513+00  
STRUCTURE NO. 044-0022