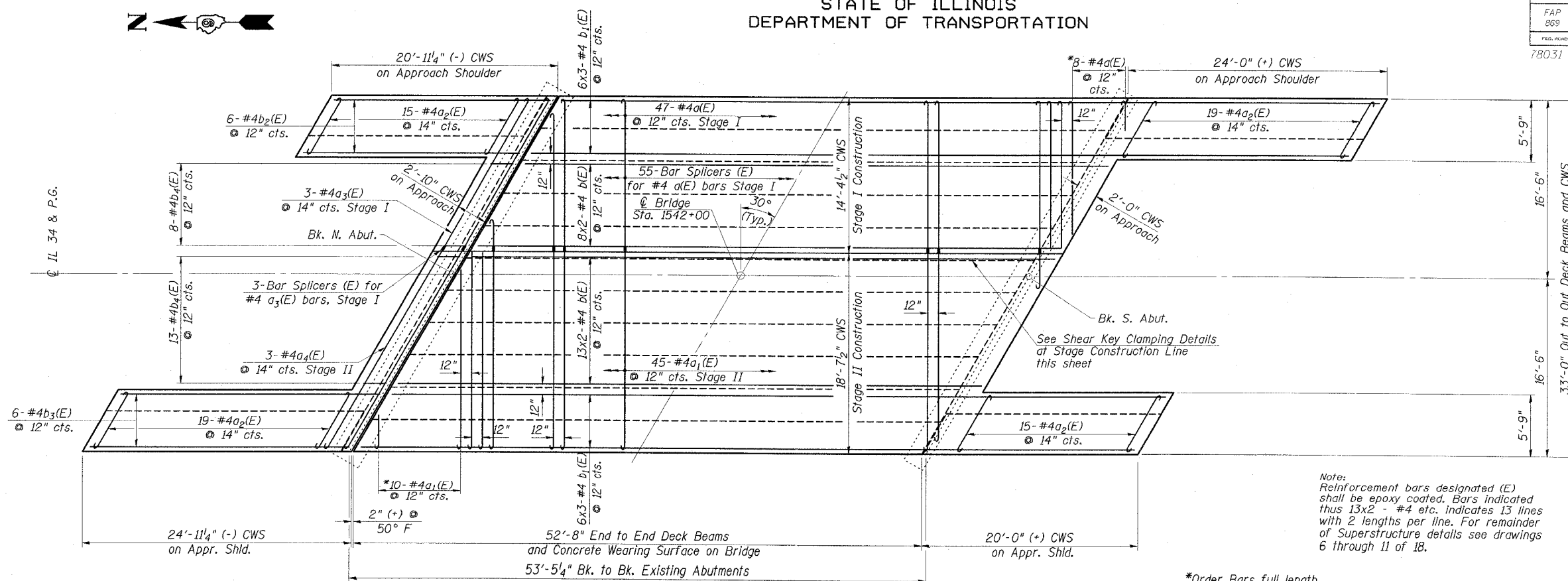


STATE OF ILLINOIS
DEPARTMENT OF TRANSPORTATION

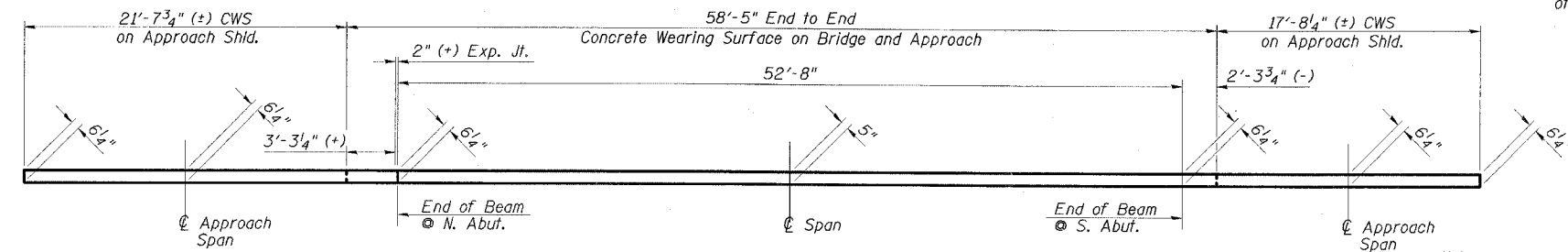
ROUTE NO.	SECTION	COUNTY	SHEET	SHEET NO.
FAP 869	105BR-1	SALINE	118	27
FED. ROAD DIST. NO. 9				18 SHEETS
TILEWAYS				FED. AID PROJECT - AID
78031				



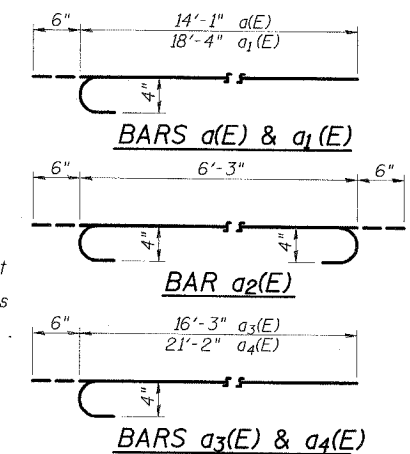
MIN. BAR LAP
#4 BAR = 1'-8"

Note:
Reinforcement bars designated (E) shall be epoxy coated. Bars indicated thus 13x2 - #4 etc. indicates 13 lines with 2 lengths per line. For remainder of Superstructure details see drawings 6 through 11 of 18.

*Order Bars full length cut to fit skew and use remainder of bars at other end of deck.



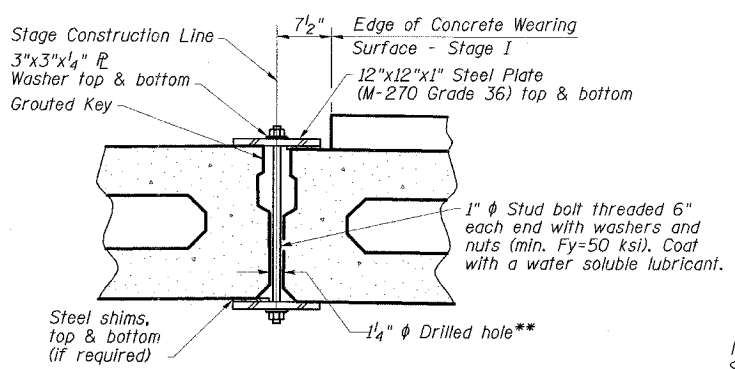
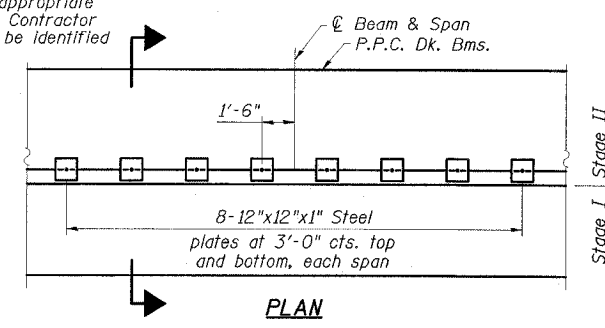
REINFORCED CONCRETE WEARING SURFACE PROFILE
(At west edge of bridge deck; east edge similar)



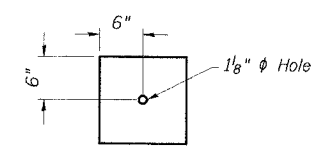
**CONCRETE WEARING SURFACE
BILL OF MATERIAL**

Bar	No.	Size	Length	Shape
a(E)	55	#4	14'-7"	
a1(E)	55	#4	18'-10"	
a2(E)	68	#4	7'-3"	
a3(E)	3	#4	16'-9"	
a4(E)	3	#4	21'-8"	
b(E)	42	#4	28'-2"	
b1(E)	36	#4	26'-7"	
b2(E)	6	#4	20'-7"	
b3(E)	6	#4	24'-7"	
b4(E)	21	#4	2'-11"	
Reinforcement Bars, Epoxy Coated		Pound	3290	
Concrete Wearing Surface, 5"		Sq. Yd.	264	
Bridge Deck Grooving		Sq. Yd.	241	
Bar Splicers		Each	58	
Protective Coat		Sq. Yd.	264	

** As an alternate to the drilled holes, the Contractor may request the Fabricator to cast 2" diameter semi-circular recesses in the sides of each beam adjacent to the stage construction line. These recesses should align to form a hole at the appropriate location for the clamping device bolts. If the Contractor elects to use this alternate, the details shall be identified on the shop drawings.



**SECTION
SHEAR KEY CLAMPING DETAILS**



Notes:
See Stage Construction Details for traffic lanes. Cost is included with Precast Prestressed Concrete Deck Beams.

**SUPERSTRUCTURE
IL 34 OVER
MIDDLE FORK SALINE RIVER OVERFLOW
FAP ROUTE 869 - SECTION 105BR-1
SALINE COUNTY
STATION 1542+00.00
STRUCTURE NO. 083-0037**

ESCA
CONSULTANTS, INC.

DESIGNED BY:	JMS	02/08
DRAWN BY:	HAS	02/08
CHECKED BY:	ELH	02/08
APPROVED BY:	RDP	02/08