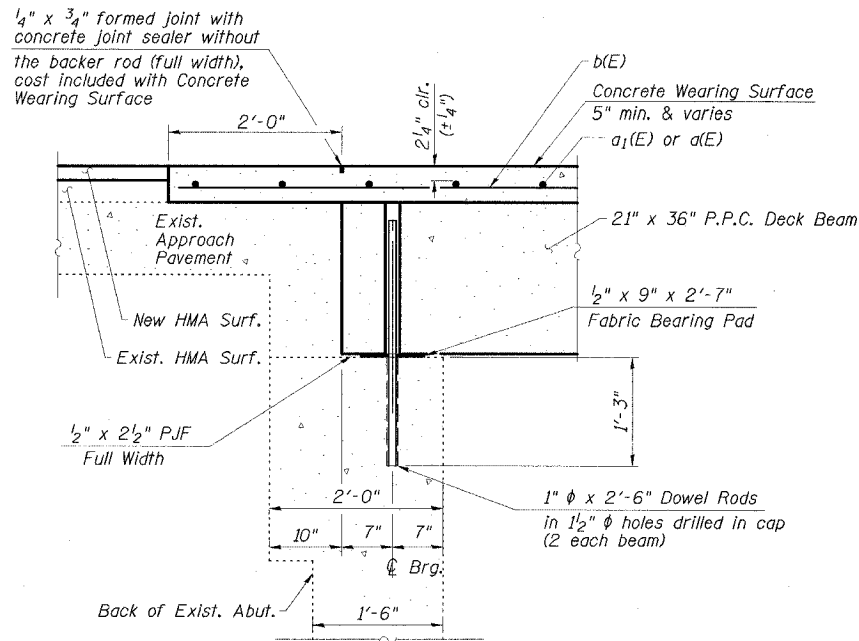


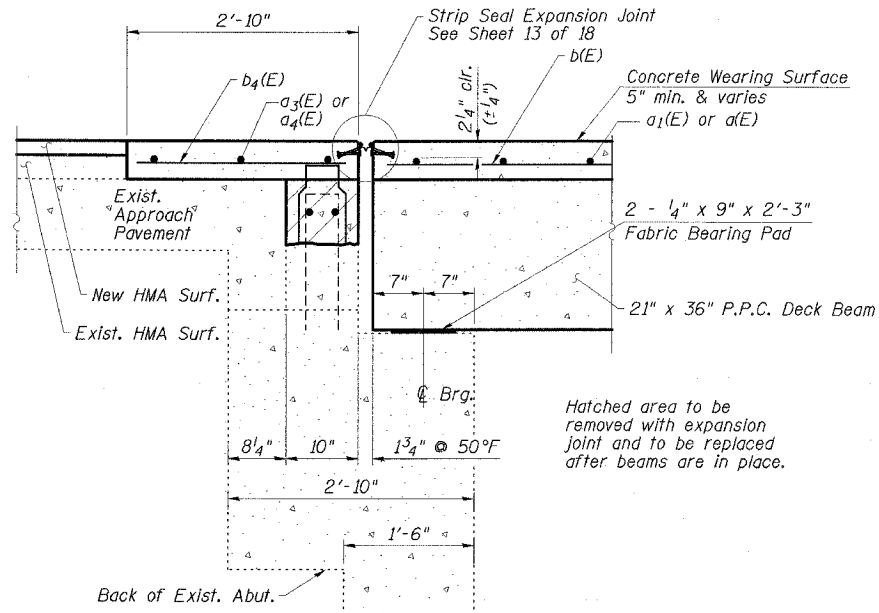
STATE OF ILLINOIS  
DEPARTMENT OF TRANSPORTATION

ROUTE NO.	SECTION	COUNTY	SHEETS	SHEET	SHEET NO. 11 13 SHEETS
FAP 869	105BR-1	SALINE	118	33	
FED. ROAD DIST. NO. 7	ILLINOIS	FED. AID PROJECT - A01			

78031



**SECTION THRU SOUTH ABUTMENT**  
@ ROADWAY  
(Dimensions @ Rt. L's)



**SECTION THRU NORTH ABUTMENT**  
@ ROADWAY  
(Dimensions @ Rt. L's)

**NOTES**

After beams have been erected, holes shall be drilled into substructure and dowels rods placed. Dowel holes shall be filled with non-shrink grout to top of beam and allowed to cure min. 24 hrs. prior to grouting the shear keys.

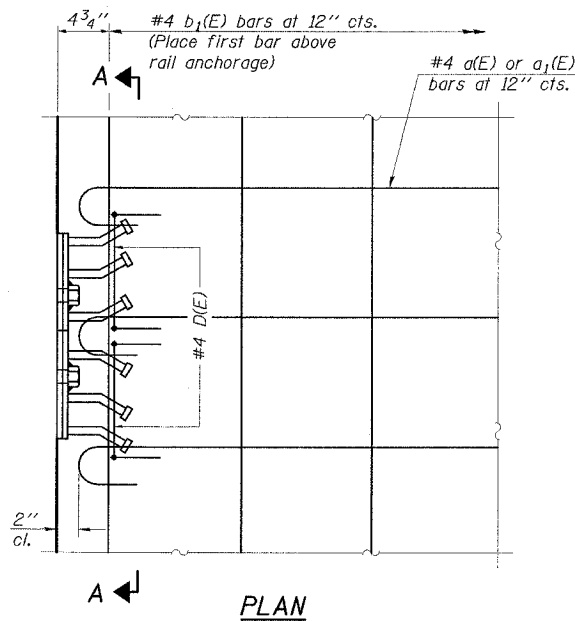
Concrete Wearing Surface to be poured after grouting the shear keys.

Dowel rods drilled in cap are included in the cost of Precast Prestressed Concrete Deck Beams (21" Depth) or Precast Concrete Bridge Slabs.

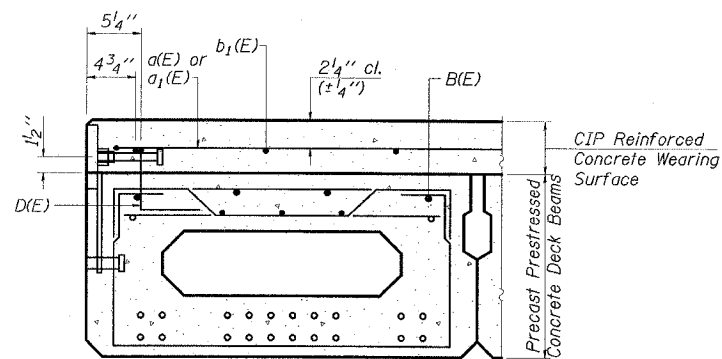
The rail anchorage shall be cast with the beam or slab and the wearing surface shall be cast in the field. Formwork necessary for the wearing surface may be secured utilizing the bottom rail anchorage inserts and/or additional inserts cast into the beam or slab. Drilling into the beam or slab will not be permitted.

Anchor bolts shall be ASTM F1554 all-thread (or an Engineer-approved alternate material) of the grade(s) and diameter(s) specified. ASTM A307 Grade C anchor bolts may be used in lieu of ASTM F1554 Grade 36 (Fy=36ksi). The corresponding specified grade of AASHTO M314 anchor bolts may be used in lieu of ASTM F1554.

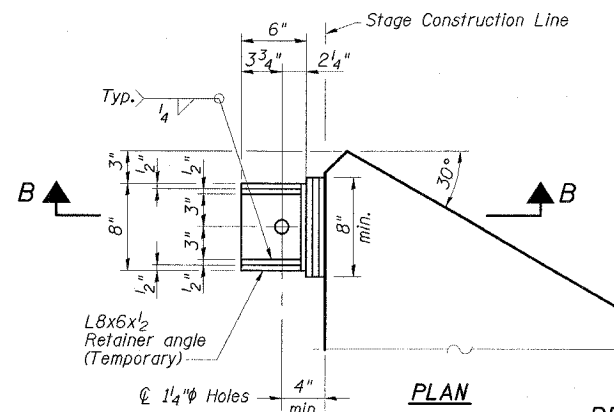
Drilled and set anchor bolts shall be installed according to Article 521.06 of the Standard Specifications.



**PLAN**

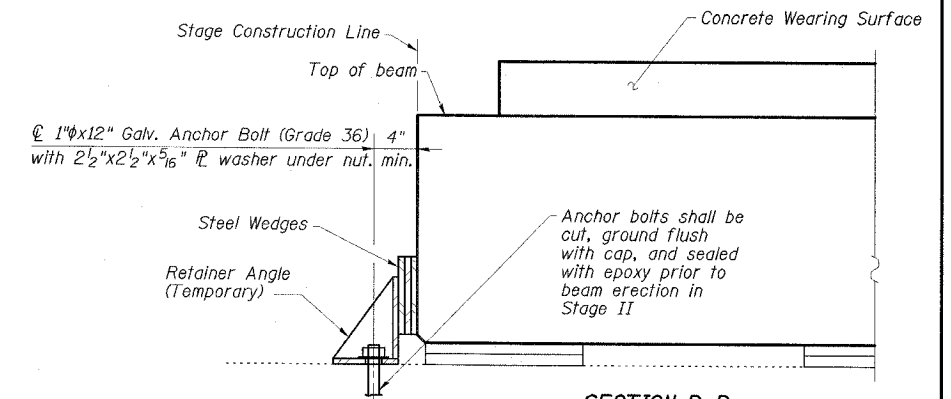


**CROSS SECTION**  
(Deck beam shown; PC bridge slab similar)



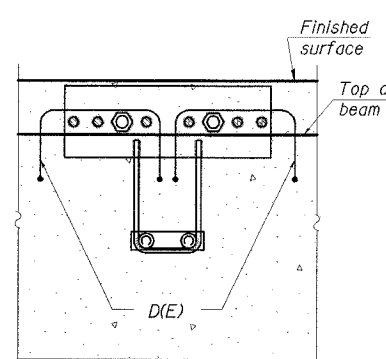
**PLAN**

**BEAM RETAINER DETAILS**  
AT STAGE CONSTRUCTION LINE  
(1 Required at North Abutment)

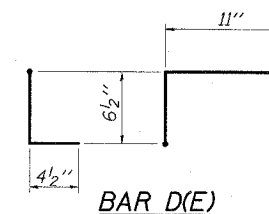


**SECTION B-B**

Cost of Retainer Angles, Anchor Bolts & accessories is included with Precast Prestressed Concrete Deck Beams.



**SECTION A-A**



**BAR D(E)**

**SUPERSTRUCTURE AND APPROACH DETAILS**  
IL 34 OVER  
MIDDLE FORK SALINE RIVER OVERFLOW  
FAP ROUTE 869 - SECTION 105BR-1  
SALINE COUNTY  
STATION 1542+00.00  
STRUCTURE NO. 083-0037

**ESCA**  
CONSULTANTS, INC.

DESIGNED BY:	JMS	02/08
DRAWN BY:	HAS	02/08
CHECKED BY:	ELH	02/08
APPROVED BY:	RDP	02/08