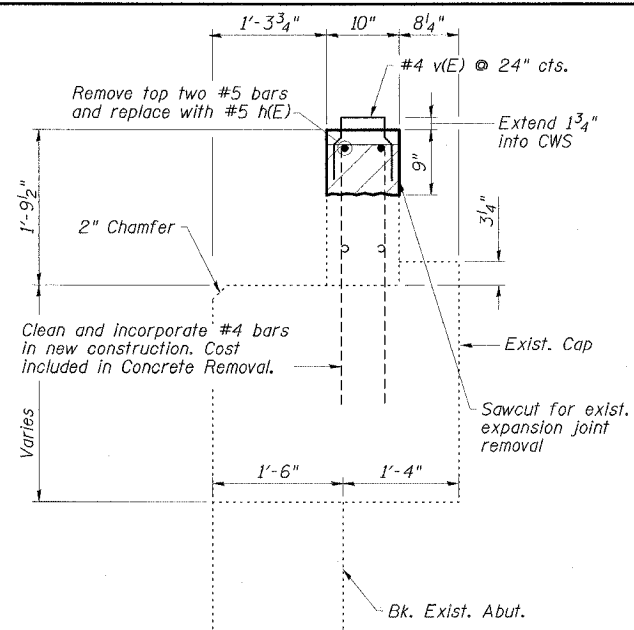


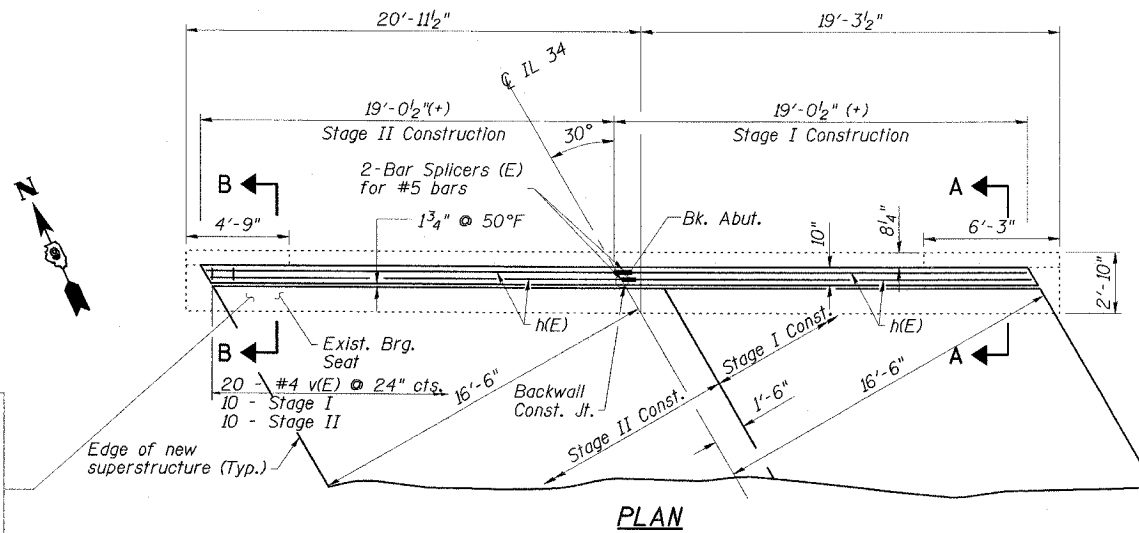
STATE OF ILLINOIS
DEPARTMENT OF TRANSPORTATION

ROUTE NO.	SECTION	COUNTY	SHEET	SHEET NO.
FAP 869	105BR-1	SALINE	118	36
PROJECT NO. 78031				18 SHEETS

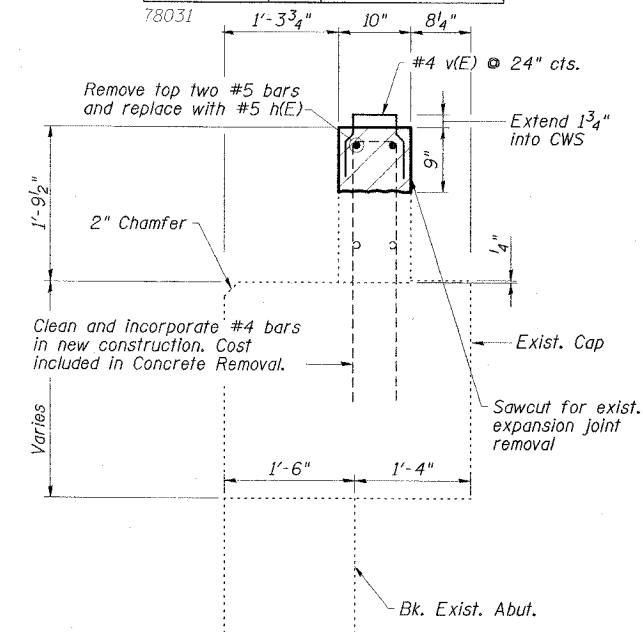


SECTION A-A

EXISTING BEARING SEAT TO BE INSPECTED BY THE ENGINEER AFTER DECK BEAM REMOVAL. DETERIORATED CONCRETE AREAS SHALL BE REPAIRED (ESTIMATED 15 S.F. STRUCTURAL REPAIR OF CONCRETE DEPTH < 5") AND CRACKS SHALL BE SEALED (ESTIMATED 20' EPOXY CRACK INJECTION) IF FOUND. CONCRETE SEALER SHALL BE APPLIED TO CONCRETE REPAIR AREAS.



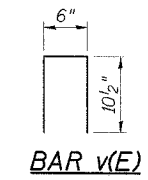
PLAN



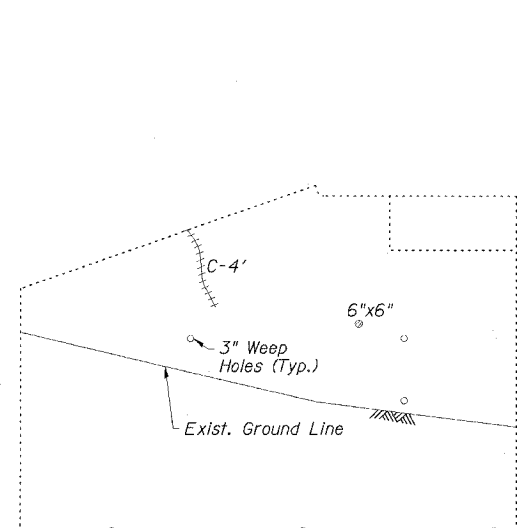
SECTION B-B

NORTH ABUTMENT
BILL OF MATERIAL

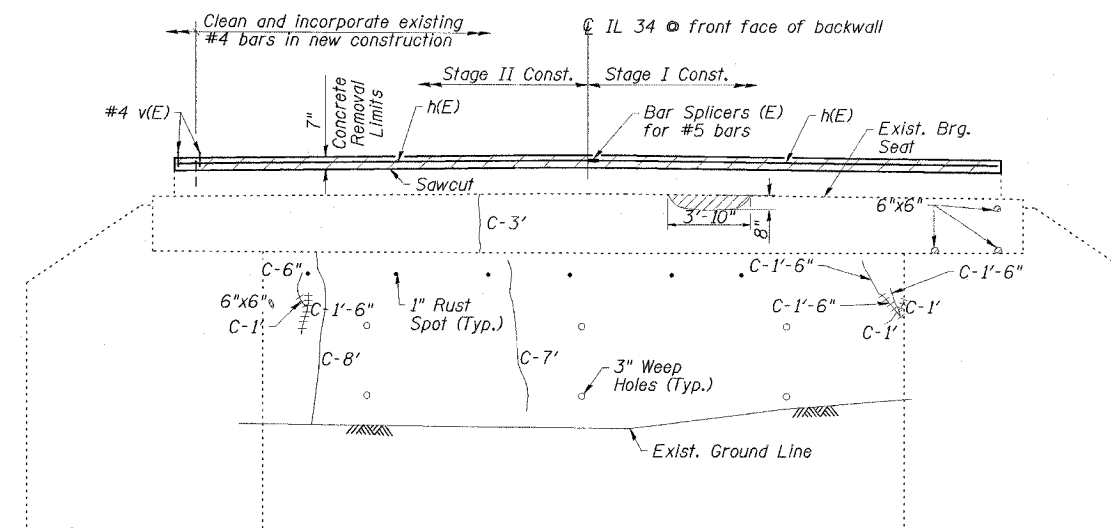
Bar	No.	Size	Length	Shape
h(E)	4	#5	18'-8"	—
v(E)	20	#4	2'-3"	□
Concrete Sealer		Sq. Ft.	45	
Epoxy Crack Injection		Foot	71	
Structural Repair of Concrete (Depth Equal to or Less Than 5")		Sq. Ft.	19	
Concrete Removal		Cu. Yd.	0.9	
Concrete Structures		Cu. Yd.	0.9	
Reinforcement Bars, Epoxy Coated		Pound	110	
Asbestos Bearing Pad Removal		Each	22	
Bar Splicers		Each	2	



BAR v(E)

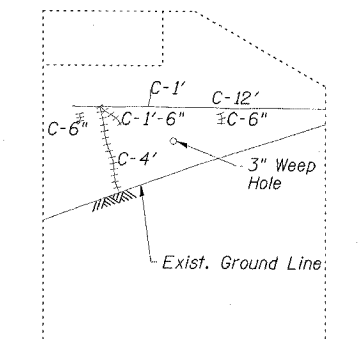


NORTHWEST WINGWALL



ELEVATION

NOTE: ABUTMENT CRACK REPAIR LENGTHS AND STRUCTURAL REPAIR OF CONCRETE AREAS ARE ESTIMATED FROM 12-17-07 SURVEY WORK. ACTUAL LOCATIONS AND QUANTITIES OF REPAIRS SHALL BE SHOWN BY THE ENGINEER ON THE AS-BUILT PLANS FOR THIS SECTION.



NORTHEAST WINGWALL

REPAIR LEGEND

- Inspection Date: 12/17/07
- C-6' Crack to be epoxy injected
 - Delaminated or Spalled Area - Use Structural Repair of Concrete
 - Efflorescent Crack
 - Rust Spot

NORTH ABUTMENT
IL 34 OVER
MIDDLE FORK SALINE RIVER OVERFLOW
FAP ROUTE 869 - SECTION 105BR-1
SALINE COUNTY
STATION 1542+00.00
STRUCTURE NO. 083-0037

ESCA
CONSULTANTS, INC.

DESIGNED BY:	JMS	02/08
DRAWN BY:	HAS	02/08
CHECKED BY:	ELH	02/08
APPROVED BY:	RDP	02/08